



On the Distribution Confirmation and Immature Stage of *Targalla delatrix* (Guenée, 1852) in Mainland Taiwan and Kinmen (Lepidoptera: Euteliidae)

SHIPHER WU¹, CHUNG-LIANG LO², CHI-FENG LEE³, ZEN-BANG XIE⁴, CHONG-GUANG LAI⁵

¹ National Taiwan Museum, No. 2, Xiangyang Rd, Zhongzheng District, Taipei City, Taiwan. Email: spwu@ntm.gov.tw

² Dong Xing Elementary School, No. 13, Guoxiao Lane, Section 1, Xingshe St, Xinshe District, Taichung City

³ Applied Zoology Division, Taiwan Agricultural Research Institute, No. 189, Rd. Zhangzheng, Wufeng District, Taichung City, Taiwan

⁴ No.40, Ln. 131, Wufu St., East Dist., Chiayi City 600, Taiwan

⁵ 7F., No.8, Ln. 239, Longci Rd., Zhongli Dist., Taoyuan City 320, Taiwan

Abstract. The occurrence of the euteliid moth *Targalla delatrix* (Guenée, 1852) in mainland Taiwan and Kinmen is confirmed through genitalia examination with reporting its newly recorded hostplants as *Syzygium acuminatissimum* (Blume) DC. and agriculturally important *Mangifera indica* L. (mango), respectively. The latter represents the first hostplant of *Targalla* recording on the plant family Anacardiaceae. Further identification for the purpose of mango quarantine should be more careful since the larvae of *T. delatrix* and *Penicillaria jocosatrix* Guenée, 1852, that both feeding on mango, are very similar in external appearance. In addition, the Chinese vernacular name of the comparable species, *T. silvicosta* Watabiki and Yoshimatsu 2014, is newly proposed.

Keywords: Oriental region, southern China, pest management

Introduction

The *Targalla delatrix* (Guenée, 1852) species group is one of most difficult moth group for identifying directly through external adult and larval morphology, as well as some members represent pest on agriculturally important fruit taxa such as *Eugenia* and *Sandoricum* (Myrtaceae) (Kuroko & Lewvanich, 1993; Robinson et al., 2001), thus the correct identification and the corresponding hostplant range are needed for integrated pest management and ecological research. After Holloway (1985), Poole (1989), Kishida (2011), recently Watabiki & Yoshimatsu (2014) elucidated the taxonomic problem of *T. delatrix* species group in Japan and East, Southeast Asia through genitalia and molecular barcoding. The present study follows the previous progress to confirm the identity of two populations of *T. delatrix* species group with reporting their hostplants in Taiwan and Kinmen.

Abbreviation

NTM National Taiwan Museum, Taipei

TFRI Insect collection, Taiwan Forestry Research Institute, Taipei

Targalla delatrix (Guenée, 1852)

綠斑浮尾蛾

(Figs 1–3, 5, 6, 8, 10, 11)

Penicillaria delatrix Guenée, 1852; *Hist. nat. Ins., Spec. gén. Lépid.* 6 (Noct. 2): 304.

Eutelias plusioides Walker, 1865, *List Spec. Lepid. Insects Colln Br. Mus.* 33: 822.

Eurhipia praetexta Felder & Rogenhofer, 1874, *Reise Fregatte Novara, Bd 2 (Abth. 2)* (4): pl. 111, f. 24.

Eutelias delatrix: Hampson, 1894: 391.

Phlegetonia delatrix: Hampson, 1912: 84.

Targalla delatrix: Swinhoe, 1888: 337; Swinhoe, 1890: 85; Holloway, 1985: 190.

Specimens examined. TAIWAN. 2 males & 1 female, Taichung City, Xinshe, 2. VIII. 2020, leg. C.-L. Lo, hostplant - *Syzygium acuminatissimum* (Blume) DC., TMIN4348(male), TMIN4349(female) with slides, TMIN4350(male) (NTM) (Figs 1, 2, 5, 8, 10); 1 male, Kinmen County, Jinhu Township, Yang Ming Cai Guan, leg. C.-F. Lee, hostplant - *Mangifera indica* L. TMIN3884 (NTM) (Figs 3, 6, 11).

Taxonomic notes. Concerning the identification of *Targalla delatrix* species group and its potential member in Taiwan, Holloway (1985) first listed *T. palliatrix* and *T. subocellata* from Taiwan with the statement as “Taiwan” and “?Taiwan”, respectively. Further Wang (1994) also listed these two in the Taiwanese fauna with one male specimen illustrated for *T. palliatrix*. Sugi (1992) only listed one *Targalla* species, *T. delatrix*, in the Taiwanese fauna. Watabiki & Yoshimatsu (2014) did not examine any specimens of *T. delatrix*, *T. palliatrix* and *T. subocellata* from Taiwan and described an additional new species *Targalla silvicosta* with 17 Taiwanese paratypes designated. Ronkay et al. (2013) recorded *T. delatrix* from Hohuanshan region, Wu et al. (2020) regarded that Hohuanshan specimen as *T. subocellata*. Fu et al. (2021) recorded three *T. delatrix* from Nanheng mountain region, however their



actual identity should be re-checked. As Watabiki & Yoshimatsu (2014)'s statement, *T. delatrix* species group is difficult to be identified through external appearance, therefore, genitalia or molecular information are generally needed for detecting actual species richness and abundance in Taiwan. To our best knowledge, the genitalia of the Taiwanese *T. delatrix* are illustrated for the first time.

Diagnosis.

Holloway (1985) designated the lectotype of *Targalla delatrix*, Watabiki & Yoshimatsu (2014) reviewed *T. delatrix* species group. The present species identification is based on genitalia examination with referring to Watabiki & Yoshimatsu (2014). All available sexes of two populations are checked and illustrated with genitalia (Figs 5, 6, 8). Hitherto no *Targalla* or con-subfamily species in Kinmen has been recorded, e.g. Fan et al. (2000), Chang (2011; 2017), therefore the diagnosis of *T. delatrix* can be referred to the plates in the present study. In mainland Taiwan, two species belonging to *T. delatrix* species group confirmed through genitalia are *T. delatrix* (Figs 5, 6, 8) and *T. silvicola* (Figs 4, 7, 9), the latter has more oblique forewing medial line, but genitalia characters are needed to diagnosis. According to Watabiki & Yoshimatsu (2014), the valval distal part of *T. delatrix* is compact rather than bifid in *T. silvicola*; the vesica is multilobed, bearing short conical cornuti and some sclerotized plates in *T. delatrix* rather than bearing three conspicuous same sized cornute, a plate-like cornutus and a densely spiny band in *T. silvicola*; ostium bursae symmetrical, sclerotized and tapering toward ductus bursae in *T. delatrix* rather than only symmetrical and sclerotized in *T. silvicola*. More information about *T. silvicosta* is given later.

Notes. The Chinese vernacular name for *Targalla delatrix*, as given by Ronkay et al. (2013) and Fu et al. (2021), is "綠斑浮尾蛾". However, this identification may be problematic, as well as the term "綠斑 (green spot)" does not correspond to any external color pattern observed in this species. Consequently, we just tentatively retain its usage in the present study.

***Targalla silvicosta* Watabiki & Yoshimatsu 2014**
森林浮尾蛾 (newly proposed Chinese vernacular name) 、寺浮尾夜蛾
(Figs 4, 7, 9)

Phlegetonia delatrix: Kuroko, 1957: 76; Watanabe, 1980: 150; Sugi, 1982: 789 (in part).

Targalla delatrix: Kishida, 2011: 267 (in part).

Targalla subocellata: Wang & Kishida, 2011: 245; Zahiri et al., 2011: 164.

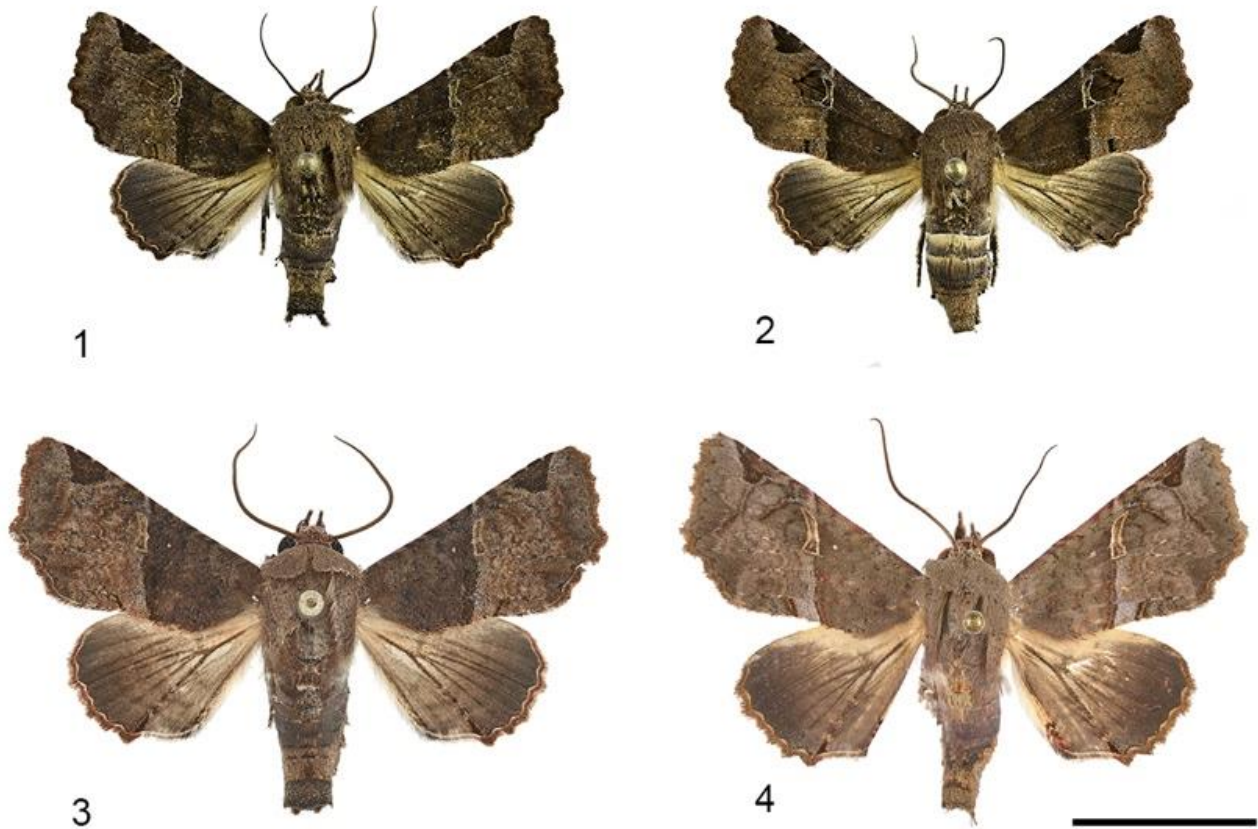
Specimens examined. TAIWAN. 1 male, Hsinchu Co., Yulao, 28. VI. 2014, C. G. Lai, TFR175943 with slide; 1 male, Hualien Co. Luosao, 16. II. 1989, leg. Y. B. Fan, "Targalla delatrix (Guenée, 1852) det. L. Ronkay, 2000", TFR13768 with slide (TFRI) (Fig. 7); 1 female, Hualien Co. Luosao, 6. VI. 2013, leg. S. Wu & W. C. Chang, SWC2024-0001 & TMIN4347 with slide (NTM) (Fig. 9).

Distribution. China, Taiwan, Vietnam (type locality), Laos, Japan (Eda, 2018).

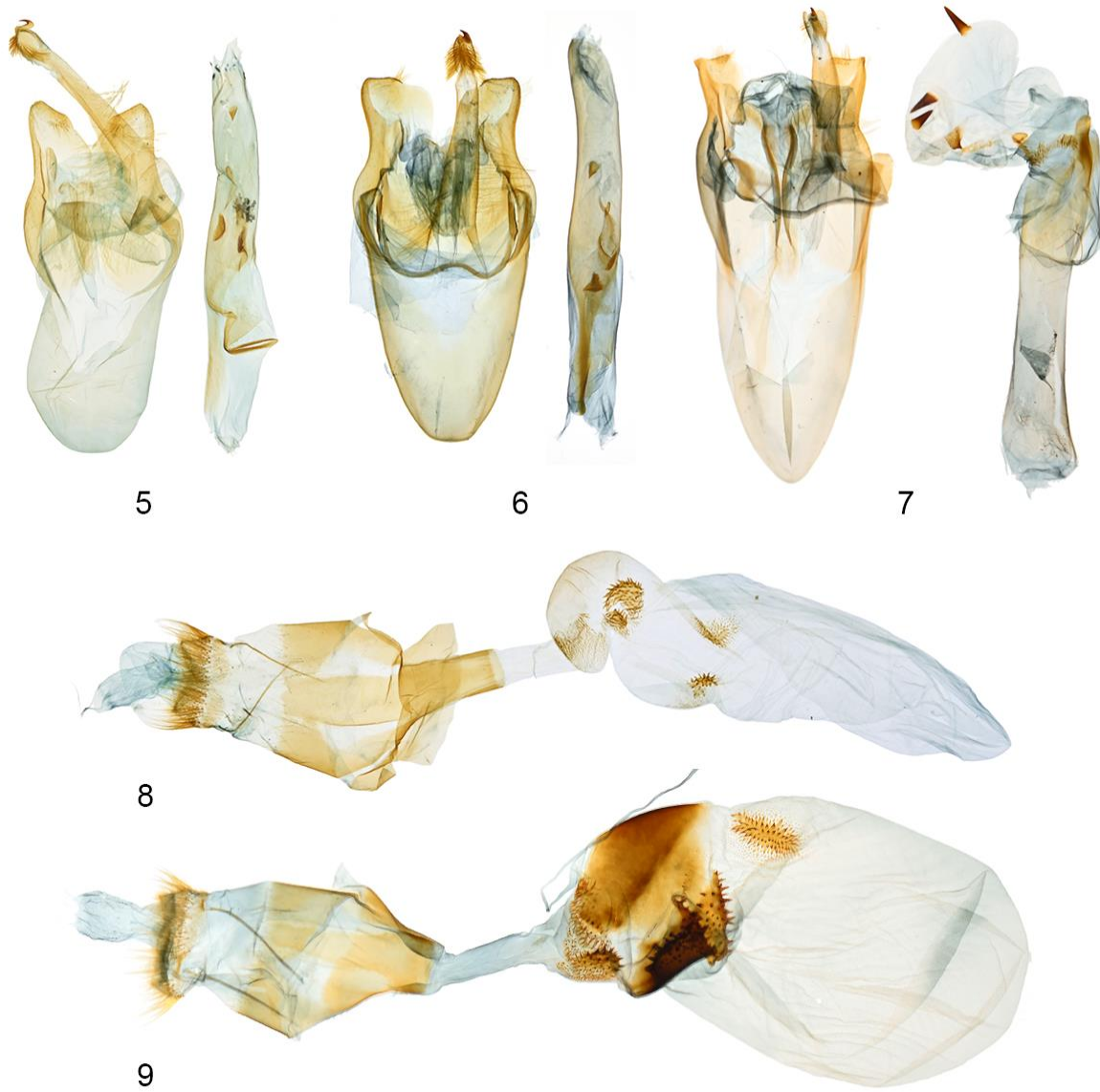
Notes. Eda (2018) gave the Chinese vernacular name for this species in China as 寺浮尾夜蛾, presumably through transliteration. The original etymology for "*silvicosta*" in Watabiki & Yoshimatsu (2014) is "'a resident of forest", we herein propose a new Chinese vernacular name, "森林浮尾蛾", for its use in Taiwan.

Discussion

According to the previous studies, e.g. (Holloway, 1985; Kuroko & Lewvanich, 1993; Robinson et al., 2001), the hostplant of *Targalla* restricts in the plant family Myrtaceae. The record in the present study for Kinmen *T. delatrix* on Mango represents the first *Targalla* on the plant family Anacardiaceae. Shih et al. (2013) listed two euteliid moths, *Chlumetia transversa* (Walker, 1863) and *Penicillaria jocosatrix* Guenée, 1852, as the pest of *Mangifera indica* (mango; Anacardiaceae). Both larvae of *T. delatrix* (Fig. 11) and *P. jocosatrix* (Fig. 12; Fig. 13 as the emerging adult) on mango are light green without obvious line or spot patterns and can not be distinguished well based on the available voucher images. The further identification of mango euteliid moths may need more careful, especially for the purpose of quarantine. In addition, the individuals of *T. delatrix* feeding on *Syzygium acuminatissimum* (Fig. 10) have the anterior and posterior segments of the body tinged with orange with distinct dorsolateral white line, implying that at least final instar larvae of *T. delatrix* may vary in color patterns according to different host use.



Figures 1–4. The habitus of *Targalla* species in Taiwan and Kinmen. 1. *T. delatrix* (Guenée, 1852), male, Taiwan, TMIN4348; 2. Ditto, female, Taiwan, TMIN4349; 3. Ditto, male, Kinmen, TMIN3884; 4. *T. silvilcola* Watabiki & Yoshimatsu, 2014, male, Taiwan, TFR1175943 (TFRI). Photo by Shipher Wu. Scale for figure = 10 mm.



Figures 5–9. The genitalia of *Targalla* species in Taiwan and Kinmen. 5. *T. delatrix* (Guenée, 1852), male, Taiwan, TMIN4348; 6. Ditto, male, Kinmen, TMIN3884; 7. *T. silvilcola* Watabiki & Yoshimatsu, 2014, male, Taiwan, TFRI175943 (TFRI); 8. *T. delatrix*, female, Taiwan, TMIN4349; 9. *T. silvilcola*, female, Taiwan, TMIN4347. Photo by Shipher Wu.



Figures 10–13. The Euteliinae in Taiwan and Kinmen. 10–12. Immature stage; 13. Adult. 10. *T. delatrix* (Guenée, 1852), Taiwan; 11. ditto, Kinmen; 12–13. *Penicillaria jocosatrix* Guenée, 1852, Taiwan. Photo by Chung-Liang Lo (10); Chi-Feng Lee (11); Zen-Ban Xie (12, 13).

Acknowledgments

We would like to express our sincere thanks to Animal and Plant Health Inspection Agency, Ministry of Agriculture for the project grant - Distribution investigation, detection, early warning and control measures of key crop diseases and pests in response to climate change (No. 113AS-5.5.4-VP-01); to the valuable comments given by two anonymous reviewers.

References

- Chang, Y.-R. 2011. The Golden Island's Enduring Spirits. Kinmen: Kinmen National Park Administration. 271 pp. (Vol. 1), 279 pp. (Vol. 2).
- Chang, Y.-R. 2017. Insect Resource in Kinmen National Park - Lieyu. Kinmen: Kinmen National Park Administration. 344 pp.
- Chen, W.-H. & Chang, H.-Y. 2001. Ecology and Control of Mango Pests. *Technical Bulletin of the Tainan District Agricultural Research and Extension Station* (110): 1–38. <https://doi.org/10.29559/ZHWHGX.200107.0001>
- Eda, K. 2018. Noctuidae: Euteliidae. pp. 50–52. In: Wang M, Kishida Y, Eda K (eds). Moths of Guangdong Nanling national nature reserve, supplement. Hong Kong Lepidopterists' Society, Honk Kong.
- Fan, Y.-B., Yang, P.-S. & Ho, Y.-M. 2000. Insects of the Kinmen Area (II) - Moths. Kinmen: Kinmen County Forestry Bureau. p. 141.
- Holloway, J. D., 1985. The moths of Borneo, Part 14, Malayan nat. J. 38: 157-317, 339 figs, 8 pls., The Malaysian Nature Society, Kuala Lumpur.
- Kishida, Y. 2011. Noctuidae Euteliinae, In Kishida Y. (ed.), 2011, The Standard of Moths in Japan 2: 71, 266–267, Gakken Education Publishing, Tokyo. (In Japanese)
- Kuroko, H. & Lewvanich, A. 1993. Lepidopterous Pest of Tropical Fruit Trees in Thailand: 132 pp., 55 pls., Japan International Cooperation Agency, Tokyo.
- Poole. R. W., 1989. Lepidopterorum Catalogus (New Series) Fascicle 118 Noctuidae Part 1–3, 1, 314 pp., Brill Publishers.
- Robinson, G. S., Ackery, P.R., Kitching, I. J., Beccaloni, G. W. & Hernandez, L. M. 2001. Host plants of the moth and butterfly caterpillars of the Oriental Region: 744 pp., Natural History Museum, London.



- Ronkay, L., Ronkay, G., Wu, S. & Fu, C. M. 2013. Euteliidae. In: Fu, C. M., Ronkay, L. & Lin, H. H. (Eds), Moths of Hehuanshan. Endemic Species Research Institute, Nantou, pp. 287–292, pl. 27: 30–32; 28: 1–3, 5–7, figs 48–51.
- Shih, H.-T., Hao, H.-H., Chiu, Y.-C., Lin, F.-C. & Yang, M.-M. 2013. A Revised and Annotated Checklist of Insects and Mites of Mangos from Taiwan. *Formosan Entomologist* 33: 27–51.
- Sugi, S. 1992. Euteliinae. pp. 184–185. In: J. B. Heppner and H. Inoue (eds). Lepidoptera of Taiwan, Vol. 1, Part 2: Checklist. Association for Tropical Lepidoptera, Gainesville.
- Watabiki, D. & Yoshimatsu, S. I. 2014. Taxonomic study of *Targalla delatrix* (Guenée) and its close relatives from East and Southeast Asia with description of a new species (Lepidoptera: Euteliidae). *Lepidoptera Science* 65 (4), 158–178/2.

臺灣本島與金門地區”綠斑浮尾蛾”的分布確認及其幼生期（鱗翅目：尾蛾科）

吳士緯¹、羅忠良²、李奇峯³、謝振邦⁴、賴重光⁵

¹ 國立臺灣博物館 臺北市襄陽路2號 Email: spwu@ntm.gov.tw

² 臺中市新社區東興里興社街一段國校巷13號

³ 農業試驗所應用動物組 臺中霧峰區萬豐里中正路189號

⁴ 嘉義東區五峰路131巷40號

⁵ 桃園市中壢區龍慈路239巷8號7樓

摘要: 本研究透過生殖器官檢視確認了在臺灣本島和金門地區尾科”綠斑浮尾蛾” (*Targalla delatrix* (Guenée, 1852)) 的分布，並首次記錄其新寄主植物為賽赤楠 (*Syzygium acuminatissimum* (Blume) DC.) 以及在農業上重要的芒果 (*Mangifera indica* L.)。後者為此蛾種於漆樹科 (Anacardiaceae) 上的首次寄主植物紀錄。由於同樣取食芒果的綠斑浮尾蛾和芒果重尾蛾 (*Penicillaria jocosatrix* Guenée, 1852) 的幼蟲在外觀上非常相似，因此基於檢疫的鑑定需要更加謹慎。此外，用以比較物種 – 森林浮尾蛾 (*T. silvicosta* Watabiki and Yoshimatsu 2014) 的新建議中文名稱亦被提出。

關鍵詞: 東方區、華南地區、蟲害管理