

Rehabilitation of Completely Edentulous Xerostomic Patient with Functional Salivary Reservoir

Dr Manisha Khanna¹, Dr Shefali Singla², Dr Jyoti Yadav³, Dr. Neha Gaur⁴

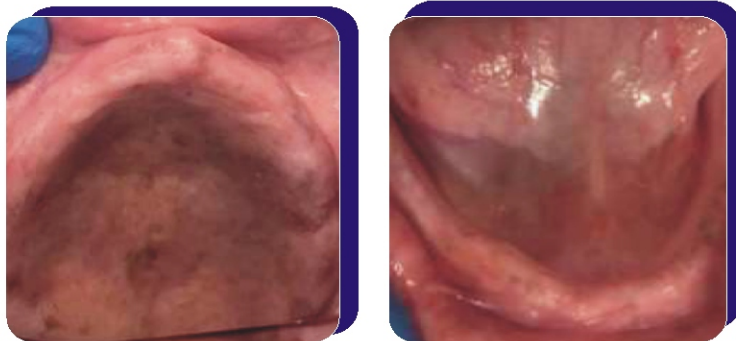
DOI: <https://doi.org/10.5281/zenodo.8362105>

Dr Harvansh Singh Judge Institute of Dental Sciences and Hospital, Panjab University, Chandigarh

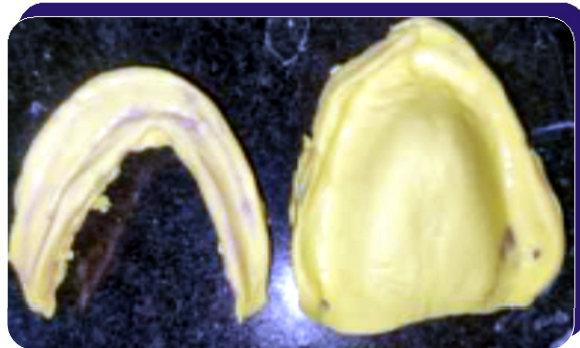
A 60 year old female patient reported to the department with loose denture and dry mouth. Patient had undergone radiotherapy for SCC of floor of the mouth 1 year back.

Treatment Plan: Complete denture fabrication with functional salivary reservoir in maxillary denture

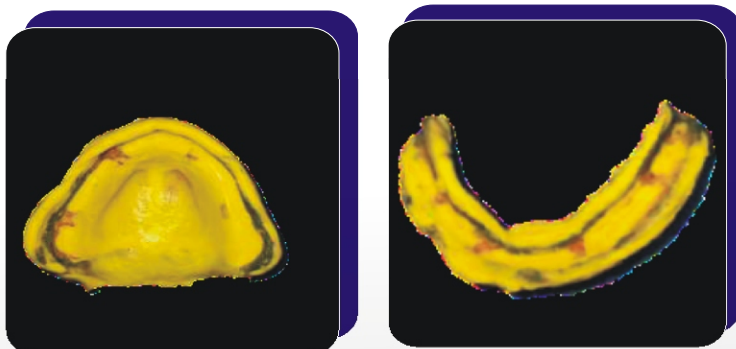
Intra-oral photograph of shiny and dry completely edentulous maxillary and mandibular arch



Primary impression made using alginiate



Border moulding done using green stick and secondary impression made using alginiate





Try-in done and palatogram obtained



Reservoir boundary made using sprue wax and index made using bioplast sheet



Cured complete dentures

Reservoir index made and reservoir lid made using soft bioplast sheet



Reservoir lid adapted over cured denture



Insertion of denture



Main advantage of using this technique of functional reservoir is slow and sustained release of saliva during functional movements like tongue movement, sucking and swallowing along with easy cleaning of the reservoir. The reservoir space was assessed using palatogram which ensured speech clarity.