

Letter to the editor

Open Access

Dwindling in the mountains: Description of a critically endangered and microendemic *Onychodactylus* species (Amphibia, Hynobiidae) from the Korean Peninsula

DEAR EDITOR,

Species that are not formally described are generally not targets for conservation, regardless of their threatened status. While habitat degradation has increased over the past several decades in the Republic of Korea, taxonomic and conservation efforts continue to lag. For instance, a clade of *Onychodactylus* clawed salamanders from the extreme southeastern tip of the Korean Peninsula, which diverged ca. 6.82 million years ago from its sister species *O. koreanus*, is under intense anthropogenic pressure due to its extremely restricted range, despite its candidate species status. Here, using genetics, morphometrics, and landscape modeling, we confirmed the species status of the southeast Korean *Onychodactylus* population, and formally described it as *Onychodactylus sillanus* **sp. nov.** We also determined threats, habitat loss, and risk of extinction based on climatic models under different Representative Concentration Pathways (RCPs) and following the IUCN Red List categories and criteria. Based on several climate change scenarios, we estimated a decline in suitable habitat between 87.6% and 97.3% within the next three generations, sufficient to be considered Critically Endangered according to Category A3 of the IUCN Red List of Threatened Species. These findings should help enable the development of conservation programs and civic activities to protect the population. Conservation action plans are a priority to coordinate the activities required to protect this species.

Current anthropogenic activities continue to have a tremendous impact on global biodiversity, leading to the world's sixth mass extinction event (Ceballos et al., 2015).

This is an open-access article distributed under the terms of the Creative Commons Attribution Non-Commercial License (<http://creativecommons.org/licenses/by-nc/4.0/>), which permits unrestricted non-commercial use, distribution, and reproduction in any medium, provided the original work is properly cited.

Copyright ©2022 Editorial Office of Zoological Research, Kunming Institute of Zoology, Chinese Academy of Sciences

Consequently, biodiversity is reaching a tipping point for future self-sustainment (Rinawati et al., 2013), and conservation efforts are critical for the continuity of natural evolutionary patterns and the avoidance of anthropomorphic selection (Otto, 2018). However, conservation first requires a formal description of the species. This is especially true for highly threatened amphibians (www.iucnredlist.org), where habitat loss is a leading driver of species decline (Lindenmayer & Fischer, 2013). Species protection relies on explicit and recognized taxonomy, much of which is still under consideration in East Asia (Kim et al., 2016; see Supplementary Materials for examples and links between taxonomy and conservation).

Despite recent taxonomic developments in amphibians inhabiting the Republic of Korea (hereafter R. Korea), diversity within the clawed salamander genus *Onychodactylus* (Caudata, Hynobiidae) remains poorly understood (details on genus taxonomy are provided in the Supplementary Materials). Based on genetic data, two potentially undescribed *Onychodactylus* species exist in R. Korea (Poyarkov et al., 2012; Suk et al., 2018), one from southern Gyeongsang Province (Poyarkov et al., 2012; Suk et al., 2018) and one from Gangwon Province (Suk et al., 2018). The southern Gyeongsang population is increasingly threatened by habitat loss, threats shared with that of *Hynobius yangi* due to overlapping habitats (Borzée & Min, 2021), and resulting in legal challenges aiming at their protection (<https://www.nocutnews.co.kr/news/34985>). With the continuing decline in the genus *Onychodactylus* (Maslova et

Received: 06 April 2022; Accepted: 26 July 2022; Online: 02 August 2022

Foundation items: This work was supported by the National Research Foundation of Korea (NRF) Grant funded by the Korean Government (NRF-2009-0067686, NRF-2016R1D1A1B03934071) to M.S.M., the Foreign Youth Talent Program (QN2021014013L) from the Ministry of Science and Technology to A.B., and partially by the Russian Science Foundation (22-14-00037) to N.A.P.

al., 2018; Suk et al., 2018; see Supplementary Materials for additional information), the aim of this study was to determine the taxonomic and threat status of *Onychodactylus* populations in Yangsan and Miryang in southeastern R. Korea.

We assessed the taxonomic status of the species using morphological (Supplementary Tables S1, S2) and molecular analyses (Supplementary Table S3). We then determined niche differentiation for the focal clade and *O. koreanus* through ecological niche modeling (ENM; Figure 1). Finally, we modeled the impact of climate change and conducted conservation assessment for the focal clade. All details on study materials and methods are presented in the Supplementary Materials.

Morphometric analyses demonstrated significant differences between *O. koreanus* and the candidate *Onychodactylus* species from Yangsan and Miryang. Analysis of variance (ANOVA) used to test for variations between clades based on four principal components (PCs) was significant for PC3 ($\chi^2=7.52$; $F_{(47,48)}=8.74$, $P=0.005$; Supplementary Table S2), although only two variables significantly loaded into PC3: length of front and back limbs. The larvae of the candidate species had significantly longer front and back limbs than *O. koreanus* (Supplementary Table S4 and Figure S1). However, these variables overlapped between the two clades (Supplementary Table S4). In addition, visual comparison of the vomerine teeth indicated that the candidate species was more similar to *O. zhaoermii* in tooth shape, but *O. koreanus* in tooth number, although we note the small sample size used for comparison (see Supplementary Figure S2). The morphological differences between the two species may be more generalized for adults as morphological divergences in amphibians are generally better understood for adults than for larvae.

For phylogenetic analysis, we obtained a 532 bp long fragment of 16S rRNA, 1 153 bp long fragment of *cyt b*, and 654 bp long fragment of *COI* mitochondrial DNA (mtDNA) genes. The final concatenated alignment of mtDNA data was 2 339 bp, and included 1 728 conservative sites, 601 variable sites, and 397 parsimony informative sites within the ingroup (Figure 1). Phylogenetic analyses employing Bayesian inference (BI) and maximum-likelihood (ML) approaches yielded nearly identical topologies, which only differed slightly in associations at several poorly supported nodes (Figure 1). The topology of the matrilineal genealogies within *Onychodactylus* was sufficiently resolved and largely consistent with earlier phylogeny of the genus presented by Poyarkov et al. (2012) and Yoshikawa & Matsui (2013, 2014). Details on the phylogenetic relationships between non-focal clades of *Onychodactylus* are presented in the Supplementary Materials.

Within the *O. koreanus* species group inhabiting the Korean Peninsula, three clades with unresolved topological relationships were revealed (Figure 1): (1) *O. koreanus* sensu stricto clade, which included populations from the southwest, north, and northeast of R. Korea (see Figure 1); (2) population from Gangwon Province in the extreme northeast of R. Korea, herein referred to as *Onychodactylus* sp. B; and (3) populations from the extreme southeast of the Korean

Peninsula, corresponding to the candidate *Onychodactylus* species from Yangsan and Miryang. Uncorrected genetic *P*-distances calculated from the *cyt b* gene fragment supported the species level of all three clades within the group (Supplementary Table S5; details in Supplementary Materials). The split between the candidate clade and *O. koreanus* likely occurred due to continued tectonic activity following the formation of the Yangsan fault (Suk et al., 2018), a lowland area that does not fit the ecological requirements of either species (see Supplementary Materials for discussion on clade origin).

Our analyses indicated clear differences in potential habitat suitability between the candidate species and *O. koreanus*. Based on evaluation metrics, the (ENMs) for *O. koreanus* (AUC=0.886±0.02; TSS=0.626±0.03) and the candidate species (AUC=0.819±0.07; TSS=0.549±0.18) showed good predictive ability. The lower AUC for the candidate species is likely linked to the lower sample size. The additional jackknife test applied to the candidate species also indicated significant predictive ability of the ENM, despite the small sample size ($P=0.03$). The contributions of environmental variables in the ENMs differed between *O. koreanus* and the candidate species, with slope showing the highest contribution for *O. koreanus* and mean diurnal range (bio2) showing the highest contribution for the candidate species (Supplementary Table S6; details in Supplementary Materials). In addition, the ENMs for both species were congruent with known distribution (Supplementary Figure S3; details in Supplementary Materials). Of note, while the ENM for *O. koreanus* predicted high habitat suitability within the range of the candidate species, without occurring in the area, the ENM for the candidate species provided only weak predictions within the *O. koreanus* range (Supplementary Figure S3).

Niche identity analysis indicated that while the ENMs generated for *O. koreanus* and the candidate species were somewhat similar (Schoener's $D=0.30$; $I=0.59$), they were significantly different ($P<0.05$). Range break analysis showed no significant differences in the ENMs between *O. koreanus* and the candidate species ($P_D=0.3663$; $P_F=0.3663$). However, comparison between *O. koreanus* and the "ribbon clade" on the Yangsan Fault showed that the ENMs of the two species differed significantly based on the I statistic ($P_D=0.059$; $P_F=0.039$), while the ENMs of the candidate species and "ribbon clade" differed significantly based on the D statistic ($P_D=0.039$; $P_F=0.079$). Therefore, the presence of unsuitable habitat between the ranges of *O. koreanus* and the candidate species likely acts as a barrier to dispersal, resulting in the isolation of both clades (see Supplementary Materials for additional discussion on "ribbon clade").

Taxonomic account

Following concordant lines of evidence based on molecular and morphometric analyses of species-level divergence, we hypothesize that the Yangsan-Miryang population of *Onychodactylus* represents a discretely diagnosable lineage. Its species status should be urgently recognized, as formally described below. The species description presented herein relies on individuals already in collections as the species is threatened and sacrificing additional individuals for formal

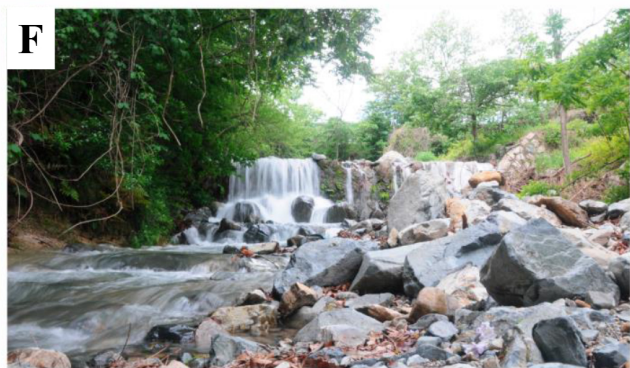
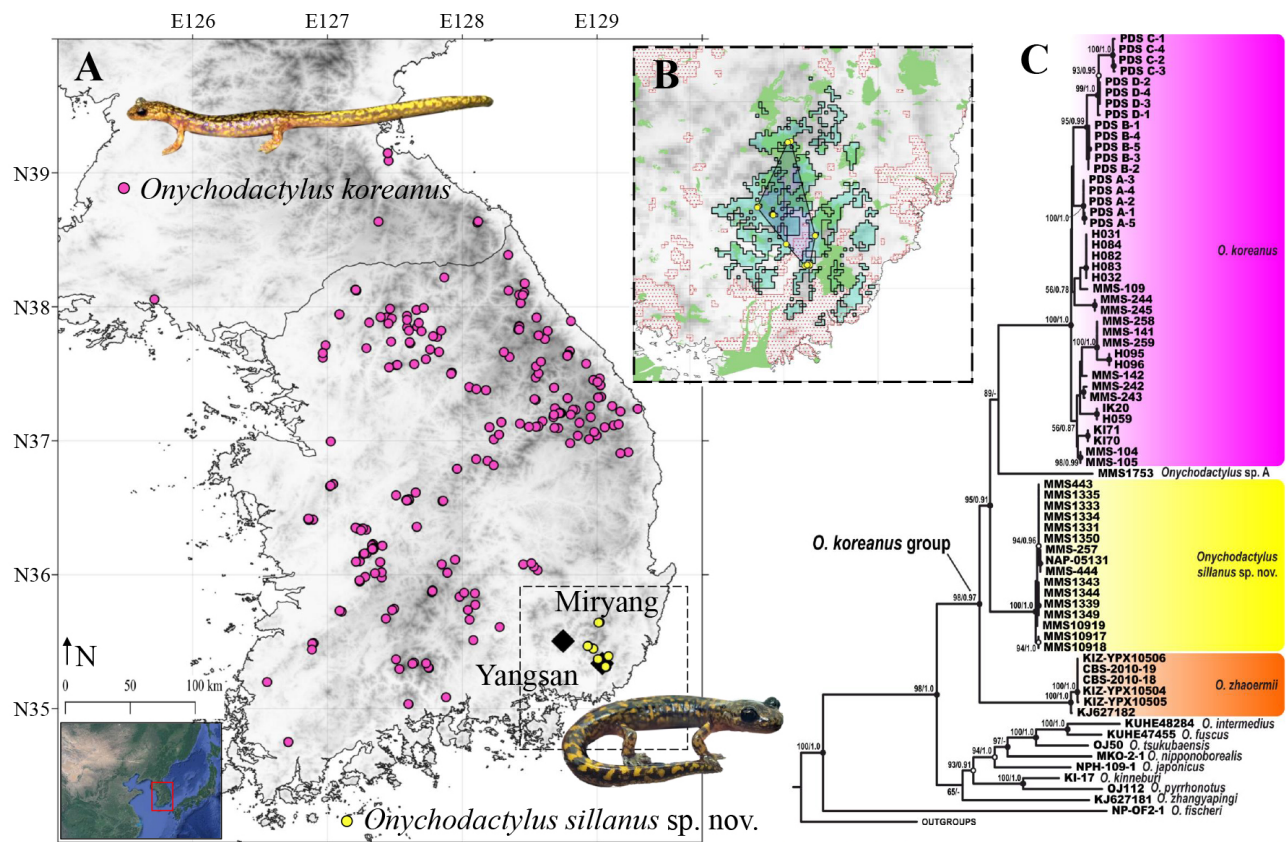


Figure 1 Range, suitable habitat, and phylogenetic relationships of *Onychodactylus sillanus* sp. nov.

A: Georeferenced occurrence points of *Onychodactylus koreanus* and *Onychodactylus sillanus* sp. nov. Collected occurrence points are based on our survey data as well as the Global Biodiversity Information Facility (GBIF), VertNet, EcoBank platform, and voucher specimens deposited in the Ewha Woman's University Natural History Museum (EWNHM). Genetic samples and specimens originate from a selection of sites, and all datapoints were used to generate ecological niche models after spatial distance thinning. The same general data collection methodology and resulting occurrence dataset for *O. koreanus* are provided in Shin et al. (2021). B: Estimated area of *Onychodactylus sillanus* sp. nov. presence based on Minimum Convex Polygon (MCP) and binary presence area of Maxent output. Note: Maxent binary output (792.7 km²) estimated significantly broader area of presence than MCP (258.3 km²). Maxent output largely fell within higher elevation area of South Gyeongsang Province. Map generated in QGIS v3.10. †: Maxent ranges are binary encoded for presence and absence based on the threshold determined in the Supplementary Materials. C: Maximum-likelihood consensus tree of the genus *Onychodactylus* derived from analysis of 1 153 bp *cyt b*, 654 bp *COI*, and 532 bp 16S rRNA gene fragments. Corresponding voucher specimen information, locality data, and GenBank accession numbers are given in Supplementary Table S3. Black circles indicate strongly supported nodes, empty circles indicate nodes with moderate support levels, no circles correspond to no node support. Numbers at tree nodes correspond to ML ultrafast-bootstrap (UFBS)/BI posterior probability (PP) support values. D, E: *Onychodactylus sillanus* sp. nov. in life: adult male from North Gyeongsang Province, Yangsan-si, Republic of Korea (D); larva from South Gyeongsang Province, Yangsan-si, Dong-myeon, Republic of Korea (E). F: Natural habitat of species in North Gyeongsang Province, Yangsan-si, Dong-myeon, Republic of Korea. Photos by Amaël Borzée (D) and Nikolay A. Poyarkov (E, F).

description contravenes the conservation practices recommended in this work.

***Onychodactylus sillanus* sp. nov. Min, Borzée, & Poyarkov**

Supplementary Figures S2, S4–S6 and Tables S4, S7

Holotype: CGRB15897 (field ID MMS6682) deposited in the Conservation Genome Resources Bank for Korean Wildlife (CGRB), subadult (metamorph, likely female) specimen collected by Mi-Sook Min and Chang Hoon Lee on 13 March 2014 from a montane stream at Sasong-ri, Dong-myeon, Yangsan, Republic of Korea (N35.309659°, E129.067086°; 110 m a.s.l.) (Supplementary Figure S5).

Paratypes: Three specimens, including CGRB15898 (field ID MMS6688); juvenile (larval) specimen collected by Mi-Sook Min and Chang Hoon Lee on 24 March 2014 from a montane stream at Sasong-ri, Dong-myeon, Yangsan, Republic of Korea (N35.306060°, E129.074238°; 100 m a.s.l.; Supplementary Figure S2); CGRB15906 (field ID MMS-7207), subadult (metamorph, likely male) specimen collected by Mi-Sook Min and Haejun Baek on 15 May 2015 from a montane stream at Sasong-ri, Dong-myeon, Yangsan, Republic of Korea (N5.31275°, E129.06892°; 110 m a.s.l.; CGRB 15907 (field ID MMS 7270 / NAP-05131), subadult (likely male) specimen collected by Mi-Sook Min and Nikolay A. Poyarkov on 5 May 2015 from a montane stream at Unmun Mountain, Unmun-myeon, Unmunsan-gil, Cheongdo-gun, North Gyeongsang Province, Republic of Korea (N35.643892°, E129.018449°; 730 m a.s.l.; Supplementary Figure S6).

Diagnosis: A slender, medium-sized hynobiid salamander and member of the genus *Onychodactylus* based on a combination of the following morphological features: lungs absent; black claw-like keratinous structures present on both fore- and hindlimbs in larvae and breeding adults; tail longer than sum of head and body lengths, tail in adults almost cylindrical at base, slightly compressed laterally at distal end; vomerine teeth in transverse row of short arch-shaped series in contact with each other; larvae with skinfolds on posterior edges of both fore- and hindlimbs; breeding males with dermal flaps on posterior edges of hindlimbs; other typical features of genus. The new species can be diagnosed from other members of the genus by the following combination of adult

characters: 11–12 costal grooves; vomerine teeth in two comparatively shallow, slightly curved series with 18–22 teeth in each, in contact medially; outer branches of vomerine tooth series slightly longer than inner branches and outer ends of series located more posteriorly than anterior ends; dark ground dorsum, head and tail (slate-black to brown) with numerous, medium-sized (size<SVL/20) yellowish to reddish-orange confluent elongated spots and ocelli, ventral side purplish gray; light dorsal band always absent; juveniles with dark ventral trunk, large yellowish blotches on dorsum and tail.

Measurements and counts of holotype: SVL: 54.8; TL: 51.8; GA: 26.5; IC: 6.5; CW: 6.3; CGBL: 1; HLL: 15; HL: 12.0; HW: 8.5; EL: 3.4; IN: 5.0; ON: 2.7; IO: 3.2; IC: 6.5; OR: 5.2; 1-FL: 1.6; 2-FL: 2.2; 3-FL: 3.3; 4-FL: 2.0; 1-TL: 1.6; 2-TL: 2.1; 3-TL: 3.1; 4-TL: 3.0; 5-TL: 2.7; VTL: 1.9; VTW: 4.5; MTH: 4.7; MTW: 4.0; MAXTH: 7.1; CGN(L): 11; CGN(R): 11; VTN(L): 21; VTN(R): 22. Please refer to the Supplementary Materials for measurements and counts of type series, morphological measurements of referred specimens, detailed description of holotype coloration and morphology, and variation and natural history of new species.

Etymology: The specific name “*sillanus*” is a toponymic adjective in the nominative singular, masculine gender, referring to the historical Korean kingdom of Silla (57 BC–935 AC) located on the southeastern parts of the Korean Peninsula, coinciding with the geographic distribution of the new species.

Common names: We suggest “Yangsan Clawed Salamander” as the common name in English and “Yangsan Ggorichire Dorongnyong” (Kkorichire Dorongnyong) (양산꼬리치레도롱뇽) as the common name in Korean, in reference to its distribution.

Comparisons: Within the *O. koreanus* group, *Onychodactylus sillanus* sp. nov. is most closely related to *O. zhaoermii*, *O. koreanus*, and undescribed clade *Onychodactylus* sp. B from Gangwon Province in R. Korea. It forms a monophyletic group with the latter two species and comparisons of the new species with *O. zhaoermii* and *O. koreanus* are the most pertinent. The new species differs from *O. koreanus* by modal costal grooves 11 (vs. higher CGN count and modal costal grooves 13 (12–13) for both sexes in *O. koreanus*); vomerine

teeth 18–22 (mean 20) in each series (vs. VTN count 10–18 (mean 16.4±2.21) in *O. koreanus*); inner branch of vomerine tooth arch notably curved forward at medial end (vs. inner branch of vomerine tooth arch not curved at medial end in *O. koreanus*); light markings on dorsum forming confluent blotches and spots (vs. light markings on dorsum usually not confluent and not forming reticulate pattern in *O. koreanus*); and front and back limbs in larvae FLL/SVL 0.09–0.13 (1.11±0.01 mean±SD) and HLL/SVL 0.10–0.16 (0.12±0.01) (vs. FLL/SVL 0.07–0.12 (0.09±0.01) and HLL/SVL 0.07–0.13 (0.11±0.01) in *O. koreanus*).

Onychodactylus sillanus **sp. nov.** further differs from *O. zhaoermii* by vomerine teeth 18–22 (mean 20) in each series (vs. vomerine teeth usually less than 16 per series (mean 13.8±1.3) in *O. zhaoermii*); and light markings on dorsum forming confluent blotches and spots, with light ocelli in adults (see Figure 1) (vs. light markings on dorsum forming dense reticulated pattern, with light ocelli absent in *O. zhaoermii*). *Onychodactylus sillanus* **sp. nov.** differs from other congeners based on a combination of the following morphological attributes: average number of costal grooves 11; slightly bent vomerine tooth series, with higher number of vomerine teeth in each series (mean 20); typical coloration of juveniles and adults (Supplementary Figure S7), dark-brown ground color with numerous small, round and bright golden to orange spots, and no distinct dorsal band.

Current distribution and climate change: Chang et al. (2009) provided the first record of the new species from Unmun Mountain as *O. fischeri*. Modeling placed the extent of occurrence (EOO) of *Onychodactylus sillanus* **sp. nov.** at 792.7 km² based on the Maxent binary map and 258.3 km² based on the minimum convex polygon (MCP). This small range is predicted to shrink further as all binary maps from the forecasted ENMs showed a drastic reduction in suitable habitat for *Onychodactylus sillanus* **sp. nov.** (Supplementary Figure S8). The models for 2050 predicted 32.1 km² of suitable habitat under the RCP 4.5 scenario and 21.6 km² of suitable habitat under the RCP 8.5 scenario (Figure 1). Models based on later time frames and higher RCPs predicted even greater decreases in suitable habitat (Supplementary Materials).

Conservation assessment: According to the international Protected Planet database (<https://www.protectedplanet.net/>), suitable habitat for *Onychodactylus sillanus* **sp. nov.** overlaps with several protected areas of significance. The species is also present or expected to be present in five protected areas in R. Korea (see list in Supplementary Materials). The projected population size reductions based on EOO declines and climate change predictions for 2050 well match the IUCN Red List Category A3(c). The RCP 4.5 scenario resulted in a decline of 87.6% (MCP) and 95.9% (Maxent binary) and the RCP 8.5 scenario resulted in a decline of 91.6% (MCP) and 97.3% (Maxent binary). Under such scenarios, the species would reach the status of Critically Endangered under Category A3(c). Based on EOO, the current geographic range of *Onychodactylus sillanus* **sp. nov.** was estimated at 792.7 km² (Maxent binary) and 258.3 km² (MCP). Thus, we recommend *Onychodactylus sillanus* **sp. nov.** be classified as Critically Endangered under Category A3(c) of the IUCN Red

List. Our findings highlight the need for a coordinated conservation action plan covering all areas where the species is known to occur.

In the current study, based on morphometric, genetic, and ecological niche modeling, we describe a new *Onychodactylus* species (*Onychodactylus sillanus* **sp. nov.**) restricted to the southeastern margin of the Korean Peninsula. In addition, we link species description to threat assessments based on the IUCN Red List of Threatened Species. We suggest the species be listed as Critically Endangered, in view of projections of future areas based on climate change scenarios, or as Endangered, based on the size of the current EOO. Without conservation action, the newly described species is facing an uncertain future.

NOMENCLATURAL ACTS REGISTRATION

The electronic version of this article in portable document format represents a published work according to the International Commission on Zoological Nomenclature (ICZN), and hence the new names contained in the electronic version are effectively published under that Code from the electronic edition alone (see Articles 8.5–8.6 of the Code). This published work and the nomenclatural acts it contains have been registered in ZooBank, the online registration system for the ICZN. The ZooBank LSIDs (Life Science Identifiers) can be resolved and the associated information can be viewed through any standard web browser by appending the LSID to the prefix <http://zoobank.org/>.

Publication LSID:

urn:lsid:zoobank.org:pub:66EEAC0C-2421-43B2-84D2-BF11684EFEE5

Onychodactylus sillanus LSID:

urn:lsid:zoobank.org:act:C62AAA19-197A-4B6C-BA6C-AD231FDA0874

SCIENTIFIC FIELD SURVEY PERMISSION INFORMATION

All observations and experiments conducted in this study were performed in accordance with the ethical recommendations of the College of Biology and the Environment at Nanjing Forestry University.

SUPPLEMENTARY DATA

Supplementary data to this article can be found online.

COMPETING INTERESTS

The authors declare that they have no competing interests.

AUTHORS' CONTRIBUTIONS

A.B. and M.S.M. designed the study. A.B., Y.S., N.A.P., J.Y.J., H.J.B., C.H.L., J.A., Y.J.H. and M.S.M. conducted field work and data analysis. A.B., Y.S., N.A.P., and M.S.M. wrote the manuscript. All authors read and approved the final version of the manuscript.

ACKNOWLEDGEMENTS

We thank Tae Ho Kim, Dong Youn Kim, Min Seob Kim, and Il

Hoon Kim for assistance in the field. Nikolay A. Poyarkov kindly thanks K. Sarkisian and J.H. Yoon for support and assistance. The authors thank all anonymous reviewers for their useful comments on an earlier draft of the manuscript.

Amaël Borzée^{1,#,*}, Yucheol Shin^{1,2}, Nikolay A. Poyarkov³, Jong Yoon Jeon⁴, Hae Jun Baek⁴, Chang Hoon Lee⁴, Junghwa An⁵, Yoon Jee Hong⁵, Mi-Sook Min^{4,#,*}

¹ *Laboratory of Animal Behaviour and Conservation, College of Biology and the Environment, Nanjing Forestry University, Nanjing, Jiangsu 210037, China*

² *Department of Biological Sciences, School of Natural Science, Kangwon National University, Chuncheon 24341, Republic of Korea*

³ *Department of Vertebrate Zoology, Biological Faculty, M.V. Lomonosov Moscow State University, Moscow 119234, Russia*

⁴ *Research Institute for Veterinary Science, College of Veterinary Medicine, Seoul National University, Seoul 08826, Republic of Korea*

⁵ *Animal Resources Division, National Institute for Biological Resources, Incheon 22689, Republic of Korea*

[#] *Authors contributed equally to this work*

*Corresponding authors, E-mail: amaelborzee@gmail.com; minbio@yahoo.co.kr

REFERENCES

- Borzée A, Min MS. 2021. Disentangling the impacts of speciation, sympatry and the island effect on the morphology of seven *Hynobius* sp. salamanders. *Animals*, **11**(1): 187.
- Ceballos G, Ehrlich PR, Barnosky AD, García A, Pringle RM, Palmer TM. 2015. Accelerated modern human-induced species losses: entering the sixth mass extinction. *Science Advances*, **1**(5): e1400253.
- Chang MH, Kim BS, Park SG, Kim TW, Oh HS. 2009. Herpetofauna in mountain unmun. *Korean Journal of Herpetology*, **1**: 53–60.
- Kim DY, Kim D, Park SK, Lee H, Suk HY, Min MS. 2016. Isolation and characterization of novel microsatellite loci in the wrinkled frog. *Genetics and Molecular Research*, **15**(1): gmr.15017183.
- Lindenmayer DB, Fischer J. 2013. Habitat Fragmentation and Landscape Change: An Ecological and Conservation Synthesis. Washington: Island Press.
- Maslova IV, Portnyagina EY, Sokolova DA, Vorobieva PA, Akulenko MV, Portnyagin AS, et al. 2018. Distribution of rare and endangered amphibians and reptiles in Primorsky Krai (Far East, Russia). *Nature Conservation Research*, **3**(S1): 61–72.
- Otto SP. 2018. Adaptation, speciation and extinction in the Anthropocene. *Proceedings of the Royal Society B*, **285**(1891): 20182047.
- Poyarkov Jr JN, Che J, Min MS, Kuro-O M, Yan F, Li C, et al. 2012. Review of the systematics, morphology and distribution of Asian Clawed Salamanders, genus *Onychodactylus* (Amphibia, Caudata: Hynobiidae), with the description of four new species. *Zootaxa*, **3465**(1): 1–106.
- Rinawati F, Stein K, Lindner A. 2013. Climate change impacts on biodiversity—the setting of a lingering global crisis. *Diversity*, **5**(1): 114–123.
- Shin Y, Min MS, Borzée A. 2021. Driven to the edge: Species distribution modeling of a Clawed Salamander (Hynobiidae: *Onychodactylus koreanus*) predicts range shifts and drastic decrease of suitable habitats in response to climate change. *Ecology and Evolution*, **11**(21): 14669–14688.
- Suk HY, Lee MY, Bae HG, Lee SJ, Poyarkov Jr N, Lee H, et al. 2018. Phylogenetic structure and ancestry of Korean clawed salamander, *Onychodactylus koreanus* (Caudata: Hynobiidae). *Mitochondrial DNA Part A*, **29**(4): 650–658.
- Yoshikawa N, Matsui M. 2013. A new salamander of the genus *Onychodactylus* from Tsukuba Mountains, Eastern Honshu, Japan (Amphibia, Caudata, Hynobiidae). *Current Herpetology*, **32**(1): 9–25.
- Yoshikawa N, Matsui M. 2014. Two new salamanders of the genus *Onychodactylus* from eastern Honshu, Japan (Amphibia, Caudata, Hynobiidae). *Zootaxa*, **3866**(1): 53–78.