



## A Qualitative Comparison of Distance-Based Protection Approaches for Active Distribution Networks

### Comparación cualitativa de estrategias de protección con relé de distancia para redes de distribución activas

Sara María Velasco-Gómez <sup>1</sup>, Sandra Milena Pérez-Londoño <sup>2</sup>, Juan José Mora-Flórez <sup>3</sup>

Fecha de Recepción: 02 de agosto de 2021

Fecha de Aceptación: 12 de agosto de 2021

**Cómo citar:** Velasco-Gómez, S.M. Pérez-Londoño, S.M. y Mora-Flórez, J.J. (2021). A Qualitative Comparison of Distance-Based Protection Approaches for Active Distribution Networks. *Tecnura*, 25(70), 146-165. <https://doi.org/10.14483/22487638.18627>

### Abstract

**Objective:** This paper presents a qualitative comparison of different recently proposed network protection schemes that are based on the distance function. From this comparison, possible opportunities are identified to develop strategies oriented towards protecting active distribution systems.

**Methodology:** This research is carried out in two parts: the first is to identify the fundamental theoretical aspects of distance protection, its main problems, and a description of the most important aspects of the relevant strategies proposed in recent years. The second part consists of selecting aspects and elaborating a qualitative comparison of the different protection schemes analyzed. This comparison makes it possible to establish the advantages and disadvantages of each of the relevant proposals used in conventional electrical networks or active distribution networks.

**Results:** As a result of this research, the most important aspects to consider in the protection design are identified, which therefore strongly affect its performance. These are summarized in a comparative table, which supports future research related to distance protection in active distribution networks.

**Conclusions:** From this research, it can be stated that the solutions analyzed, despite being relevant within the scope of distance protection applied to active distribution networks, have problems to solve. None of these strategies protects the network for all types of failures in a selective, sensitive, reliable, and cost-effective way while guaranteeing minimum supply interruption to consumers.

**Funding:** This paper is a result from projects 6-20-6 funded by Universidad Tecnológica de Pereira and contract 774-2020 (Integra2023) funded by Minciencias, Colombia.

**Keywords:** active distribution network, adaptive protection, distance relay, faults

<sup>1</sup>Electrical engineer, Master's student in Electrical Engineering, researcher, Universidad Tecnológica de Pereira. Pereira, Colombia. Email: [sary.m.gomez@utp.edu.co](mailto:sary.m.gomez@utp.edu.co)

<sup>2</sup>PhD in Engineering, electrical engineer. Full professor, Universidad Tecnológica de Pereira. Pereira, Colombia. Email: [saperez@utp.edu.co](mailto:saperez@utp.edu.co)

<sup>3</sup>PhD in Engineering, electrical engineer. Full professor, Universidad Tecnológica de Pereira. Pereira, Colombia. Email: [jjmora@utp.edu.co](mailto:jjmora@utp.edu.co)

## Resumen

**Objetivo:** Este artículo presenta una comparación cualitativa de diferentes esquemas de protección de redes, propuestos recientemente y basados en la función de distancia. A partir de esta comparación se identifican las posibles oportunidades para desarrollar estrategias esencialmente orientadas a la protección de sistemas de distribución activos.

**Metodología:** Esta investigación se realiza en dos partes: la primera se orienta a la identificación de los aspectos teóricos fundamentales sobre la protección de distancia, sus principales problemas y una descripción de los aspectos más importantes de estrategias relevantes propuestas en los últimos años. La segunda parte consiste en la selección de aspectos y la elaboración de una comparación cualitativa de los diferentes esquemas de protección analizados. Esta comparación permite establecer las ventajas e inconvenientes de cada una de las propuestas relevantes que se utilizan en redes eléctricas convencionales o en redes de distribución activas.

**Resultados:** Como resultado de esta investigación se identificaron los aspectos más importantes a considerar en el diseño de la protección y que, por lo tanto, afectan fuertemente su desempeño. Estos se resumen en una tabla comparativa, que sirve de apoyo a futuras investigaciones relacionadas a la aplicación de la protección de distancia en redes de distribución activas.

**Conclusiones:** A partir de esta investigación se puede afirmar que las soluciones analizadas, pese a ser relevantes dentro del ámbito de la protección de distancia aplicada a las redes de distribución activas, tienen problemas por resolver. Ninguna de estas estrategias permite proteger la red para todos los tipos de fallas de una manera selectiva, sensible, fiable y rentable que garantice la mínima interrupción del suministro a los consumidores.

**Financiamiento:** Este artículo es el resultado del proyecto 6-20-6 por la Universidad Tecnológica de Pereira y el contrato 774-2020 (Integra 2023) por Minciencias, Colombia.

**Palabras clave:** red de distribución activa, protección adaptativa, relé de distancia, fallas

---

## Table of Contents

	Page
<b>Introduction</b>	<b>148</b>
Motivation . . . . .	148
<b>State of the art</b>	<b>149</b>
<b>Paper contributions</b>	<b>150</b>
<b>Distance protection</b>	<b>150</b>
Fundamental concepts . . . . .	150
Main issues with distance protection for ADN . . . . .	151
<b>Description of some recent distance protection approaches for ADN</b>	<b>152</b>
A. Approach presented by (Sinclair <i>et al.</i> , 2014): . . . . .	152
B. Approach proposed in Tsimtsios and (Nikolaidis <i>et al.</i> , 2018): . . . . .	154
C. Approach presented by (Ma <i>et al.</i> , 2015): . . . . .	154

D. Approach introduced by (Liang <i>et al.</i> , 2020) . . . . .	155
E. Approach proposed by (Yin <i>et al.</i> , 2021) . . . . .	157
F. Approach presented by (Chen <i>et al.</i> , 2018) . . . . .	158
G. Approach introduced by (Tsimtsios <i>et al.</i> , 2019): . . . . .	159
H. Approach presented by (Tsimtsios <i>et al.</i> , 2019a, Tsimtsios <i>et al.</i> , 2019b) . . . . .	160
<b>Methodology</b>	<b>160</b>
<b>Conclusions</b>	<b>160</b>
<b>Funding</b>	<b>162</b>
<b>References</b>	<b>162</b>

## INTRODUCTION

### Motivation

In recent years, conventional distribution systems have dealt with different challenges related to energy efficiency, fast growth in demand, environmental pollution, global warming, dependence on the geographical conditions of the region, among others, which significantly affect the quality and reliability of service to the end user (Giral *et al.*, 2017). These have prompted new forms of generation at the distribution level by integrating renewable energy sources such as natural gas, biogas, wind energy, and photovoltaic plans. This type of generation is also known as distributed generation (DG), and the energy sources involved are called distributed energy resources (DER) (Rafique *et al.*, 2020), which are used to increase reliability and safety in the short, medium, and long term (Carvajal & Marín-Jiménez, 2013). However, the high penetration and integration of DER have a negative impact on distribution networks. Their impact depends on their location, sizing, and mode of operation (Buitrago-Arroyave & López-Lezama, 2013). This has resulted in increasingly complex systems with several operational problems. The main issues appear with traditional protection schemes, where challenges are noticed such as relay coordination problems due to changes in the grid structure, fault levels, and false tripping, among others (Sarangi *et al.*, 2021, Usama *et al.*, 2021).

To solve these problems, several authors have proposed protection strategies, which adapt conventional relays (overcurrent, distance, differential, undervoltage, among others) to improve their performance in these active distribution networks (ADNs) (Alam, 2019, Barra *et al.*, 2020, Li *et al.*, 2021). The proposed protection schemes focus individually on the relay function, given that each one presents specific problems when applied to ADNs, which is why this review paper presents a comparative analysis of protection schemes implemented specifically using the distance relay.

Consequently, all the analyzed factors are those that can originate malfunction in distance protection, thus affecting the safe operation of an ADN. Thus, studying the countermeasures required to eliminate or reduce these factors' impact through different protection strategy proposals is essential.

## STATE OF THE ART

Distance relays are commonly used in transmission networks. However, they are also considered an essential alternative for ADNs due to their significant advantages compared to other conventional relays (Sinclair *et al.*, 2014). As an example, relay settings depend on the measured impedance, so they are not affected by changes in network topology. Distance relays also have higher sensitivity, selectivity, and accuracy, and their operation is faster than overcurrent relays (Borlase, 2017). However, the main problems with distance protection when operating in ADNs are the infeed effect, fault resistance, directional feature, among others, thus underreaching or overreaching the real impedance and resulting in an erroneous fault detection (Nikolaidis *et al.*, 2018). Another factor to consider is unbalanced faults, which can negatively affect the reliability and speed of distance protection (Sinclair *et al.*, 2014, Jia *et al.*, 2019).

Therefore, several proposals involving adaptive protection schemes based on distance relays have been published in the last years to solve these problems. These approaches aim to reduce the effects of fault resistance or infeed currents (Sinclair *et al.*, 2014). Others implement a compensation factor for zero-sequence (Tsimtsios & Nikolaidis, 2018). In addition, several strategies use different methodologies to define their approach: some are based on voltage drop (Ma *et al.*, 2015) or voltage amplitude comparisons (Liang *et al.*, 2020). Other schemes deal with more specific problems such as determining the fault direction (Chen *et al.*, 2018) or the protection challenges associated with the point of interconnection, as in El-Arroudi & Joós, 2018 and Yin *et al.*, 2021. The latter also considers the change produced by the connection of the power transformer at that point, which affects the impedance calculation seen by relay 21.

Another important aspect of distance relays is the adjustment of protection zones. Lavand & So-man, 2016 propose predictive analysis to supervise zone 1 of a distance relay using synchrophasors. Ghorbani *et al.*, 2021 provide an accurate non-pilot scheme for an accelerated trip of distance relay zone-2 faults. Regulski *et al.*, 2021 establish the adaptive reach of the 3rd zone of a distance relay with synchronized measurements.

Tsimtsios *et al.*, 2019 use a communication system to improve the performance characteristics of relay 21, such as improving the speed of digital distance protection. As examples, Jin *et al.*, 2018 employ communication systems based on the IEC 61850 standards; Liu *et al.*, 2019 implement a communication system on an field programmable gate array (FPGA) board, and it is tested using a PSCAD/EMTDC simulator and COMTRADE 99 communication protocols. Despite this, a communication system implies an increase in the operating costs of the network, which is why Tsimtsios *et*

*al.*, 2019a, Tsimtsios *et al.*, 2019b introduce complete guidelines for designing economically feasible distance protection schemes for radial distribution systems with distributed generation (DG).

In addition, some strategies facilitate the estimation of voltage and current signals measured by the relay. Generally, the fast Fourier transform is the most used. Nevertheless, Zamora-Méndez *et al.*, 2016 and Vázquez *et al.*, 2020 implement the second-order Taylor-Kalman- Fourier filter for signal processing analysis, which is faster and with a smaller signal estimation error.

## PAPER CONTRIBUTIONS

This paper compares the odds and drawbacks of different protection strategies based on the distance relay applied to ADNs that have been proposed in recent years. It aims to identify and highlight these protection capabilities, which are useful to propose an approach to eliminate the identified gaps in future works.

## DISTANCE PROTECTION

### Fundamental concepts

Protection devices have a fundamental role in electric networks. An essential device is distance protection, also known as relay 21, which contributes to ensure the continuity and quality of the service for end users (Bansal, 2019). A relay 21 is based on the positive sequence impedance, estimated between the faulted node and the relay location. Therefore, these relays use the measured current and voltage to determine the impedance in the presence of fault conditions (Borlase, 2017).

According to Ma & Wang, 2018, the measured impedance at the relay location ( $Z_m$ ) is presented in Equation (1).

$$Z_m = \frac{\dot{U}_m}{\dot{I}_m} \quad (1)$$

Variables  $\dot{U}_m$  and  $\dot{I}_m$  are the voltage and the current phasors measured by the distance relay. When the network is in normal operating condition,  $\dot{U}_m$  is, approximately, the rated voltage,  $\dot{I}_m$  is the load current, and  $Z_m$  is the load impedance. However, when a fault occurs,  $\dot{U}_m$  decreases,  $\dot{I}_m$  increases, and  $Z_m$  becomes the impedance between the fault and the relay location. In this way, the distance relay is designed to recognize fault conditions and generate a trip order when  $Z_m$  is lower than the zone setting impedance ( $Z_{set}$ ), as presented in Equation (2).

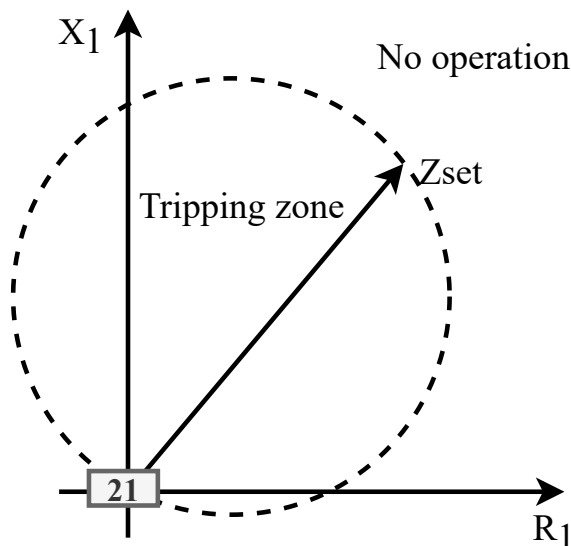
$$\text{If } Z_m < Z_{set}, \quad \text{then send trip signal to 52} \quad (2)$$

The tripping region of the 21 function can be plotted on the R–X plane, as shown in Figure 1, where the protection zone is delimited by  $Z_{set}$ , which is the diameter of the circle in the case of mho-type distance protection. Nevertheless, [Mohajeri et al., 2015](#) presents the tripping range as delimited by straight lines, considering other factors such as variations of setting distance, fault resistance, power factor, and measurement errors, thus forming a quadrilateral tripping area, as shown in Figure 2.

### Main issues with distance protection for ADN

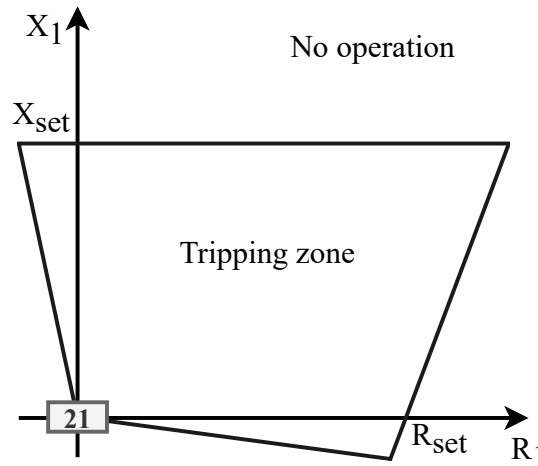
Distance relays are generally used in transmission networks. Nevertheless, these have also been considered to be an essential alternative for ADNs, due to their significant advantages in comparison with other conventional relays. As an example, the relay settings depend on the measured impedance, and these are not affected by changes in grid topology ([Usama et al., 2021](#)). They also have higher sensitivity, selectivity, and accuracy, and their operation is faster compared to overcurrent relays ([Borlase, 2017](#)).

The main issues that cause a malfunction of distance relays when applied in ADNs are presented here. Short lines originate overreach errors in impedance estimation due to the low X/R ratio, since this affects the magnitude of the fault current ([Hooshyar & Iravani, 2017](#)). In the case of intermediate sources, the infeed effect is a major influencing factor for distance protection, which affects the measured impedance. This problem results in underreach phenomena because the relay 21 does not



**Figure 1.** Mho-type operational characteristics of distance protection

**Source:** [Sinclair et al., 2014](#), [Mohajeri et al., 2015](#).



**Figure 2.** Quadrilateral operational characteristics of distance protection  
**Source:** Sinclair *et al.*, 2014, Mohajeri *et al.*, 2015.

measure the total fault current. Similarly, the fault resistance also results in an additional impedance measured by the relay. However, this effect may cause not only underreach but also overreach phenomena. The latter causes the relay not to detect the fault since the impedance seen is outside the protection zone (Nikolaidis *et al.*, 2018).

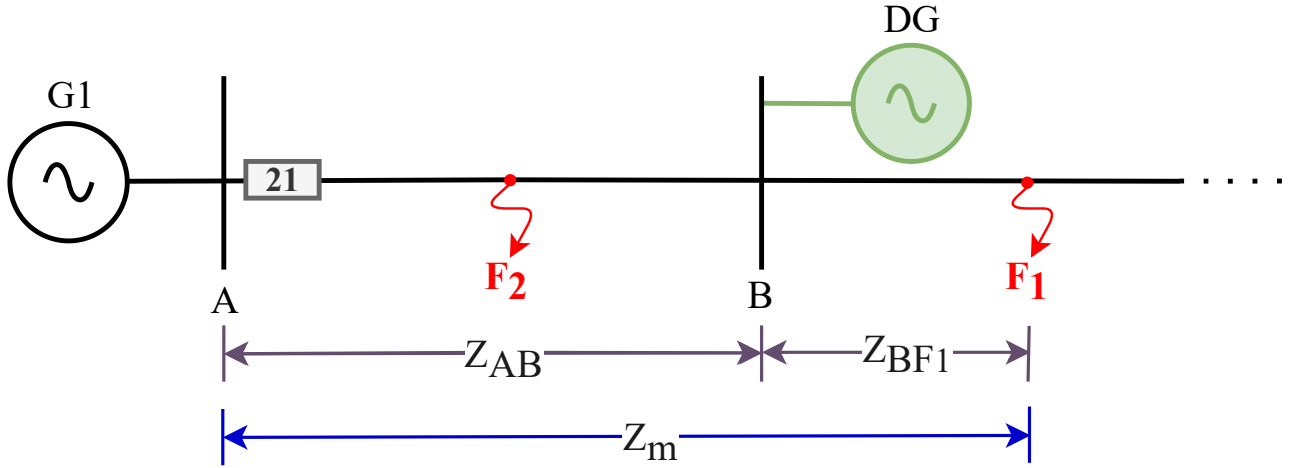
Other additional problems are related to the directional function, which, in the case of using the positive or negative sequence components, is affected by the harmonic distortion caused by inverter-based DERs (Hooshyar & Irvani, 2017). Moreover, the intensity and nature of the aforementioned effects vary mainly due to the DG penetration level.

## DESCRIPTION OF SOME RECENT DISTANCE PROTECTION APPROACHES FOR ADN

Several authors have focused on the advantages and issues of distance protection. Therefore, several strategies have been proposed in the last few years to improve this, especially in the case of ADN application.

### A. Approach presented by (Sinclair *et al.*, 2014):

The paper by Sinclair *et al.*, 2014 describes the advantages of using distance relays for distribution protection to solve some DG integration problems. To adequately implement distance protection, it is necessary to model the operating characteristics. The paper argues that distance elements derive their



**Figure 3.** Distance relay in a faulted system

Source: Authors.

operating and polarizing signals from measured voltages and currents. These signals are applied either to the magnitude or angle comparator, from which a trip decision is derived.

As explained above, during normal operating conditions,  $Z_m$  equals  $Z_{load}$ . In the case of a fault, the measured impedance changes to an impedance with larger inductive and lower resistive components, which is primarily determined by the feeder impedance, from the relay node to the faulted point, as shown in Equation (3) and presented in Figure 3. This last operating condition considers fault 1 ( $F_1$ ).

$$Z_m = Z_{AB} + Z_{BF1} \quad (3)$$

where,  $Z_{AB}$  and  $Z_{BF1}$  are the positive-sequence impedance from the substation to the next successive bus, as well from this node to the fault point.

However, as previously presented, it is necessary to consider the factors that affect the measured impedance. This is shown in Equation (4), where the infeed effect is included. This effect is due to the presence of DG in node B.

$$Z_{m,infeed} = Z_{AB} + \frac{I_{G1} + I_{DG}}{I_{G1}} Z_{BF1} \quad (4)$$

where,  $Z_{m,infeed}$  is the measured impedance considering the infeed effect,  $I_{G1}$  is the fault current contribution from the utility source and measured by the relay, and  $I_{DG}$  is the fault current contribution from the DG on node B. If only the fault resistance ( $R_F$ ) is considered, the impedance seen by the relay 21 is obtained as expressed by Equation (5).

$$Z_{m,R_F} = Z_{AB} + Z_{BF1} + R_F \quad (5)$$



## B. Approach proposed in Tsimtsios and (Nikolaidis *et al.*, 2018):

The case of the zero-sequence compensation factor ( $K_0$ ) for the correct operation of distance protection during single-line-to-ground faults (SLG) is considered by Tsimtsios & Nikolaidis, 2018. In this case, the impedance calculated by the ground distance element is different from the positive-sequence impedance up to the fault position due to the zero-sequence current effect. Thus, to achieve its correct operation, the zero-sequence current is compensated by the  $K_0$  factor presented in Equation (6), which is included in the relay settings.

$$K_0 = \frac{(z_0 - z_1)}{K z_1} \quad (6)$$

where  $z_0$  and  $z_1$  are the per-unit zero and positive-sequence line impedances from the relay location up to the fault position, respectively, and  $K$  can be equal to 1 or 3, depending on the relay design. Therefore, the impedance calculated by the relay ( $Z_m$ ), considering  $K_0$  in case of a phase-a SLG fault is obtained as shown in Equation (7)

$$Z_m = \frac{Z_{m,nc}}{(1 + K_0)} \quad (7)$$

where,  $Z_{m,nc}$  represents the non-compensated fault impedance, namely the impedance measured up to the fault point without the consideration of  $K_0$ .

## C. Approach presented by (Ma *et al.*, 2015):

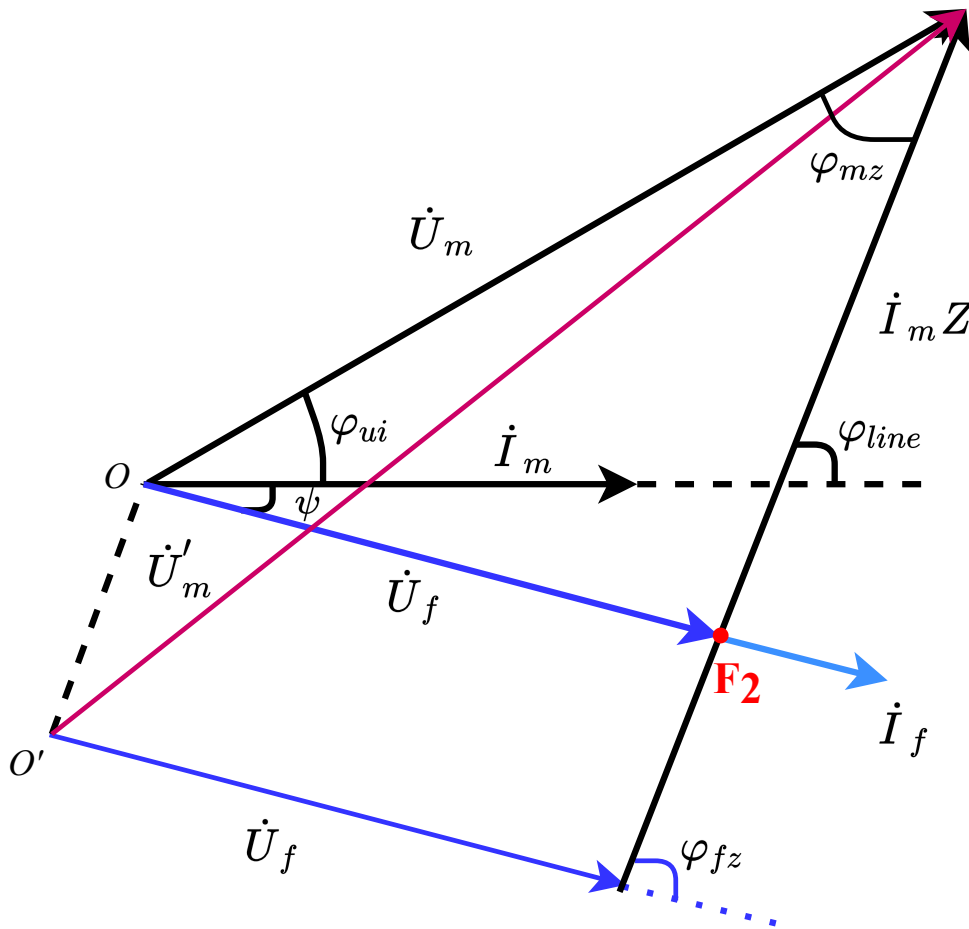
Ma *et al.*, 2015 presents an alternative approach that considers the voltage drop under high-resistance faults to propose an adaptive scheme for a quadrilateral-type relay. First, this strategy establishes a voltage drop equation from the relay location to the fault point. Equation (8) shows the voltage drop in a double-source system considering a fault 2 ( $F_2$ ) as in Figure 3.

$$\dot{U}_m = \dot{I}_m Z + \dot{U}_f \quad (8)$$

where  $Z$  is the real fault impedance and  $\dot{U}_m$  is the voltage at the fault point, which is determined by the multiplication of the fault current ( $\dot{I}_f$ ) and resistance ( $R_F$ ).

For the case of a fault 2 ( $F_2$ ), the voltage and current phasors are shown in Figure 4. Due to the contribution of the opposite side current,  $I_{DG}$ , there is an angular difference,  $\psi$ , between  $\dot{I}_m$  and  $\dot{I}_f$ . In addition,  $\varphi_{line}$  is the impedance angle of the protected line, and  $\varphi_{ui}$  is the angular difference between  $\dot{U}_m$  and  $\dot{I}_m$ . Therefore, performing a phasor analysis of Figure 4 from Equation (8), the fault impedance is obtained using  $Z_m$ , as shown in Equation (9).

$$Z_{AF2} = Z_m \left| \frac{\sin(\varphi_{ui}) + \psi}{\sin(\varphi_{line}) + \psi} \right| \frac{\cos \varphi_{line} + j \sin \varphi_{line}}{\cos \varphi_{ui} + j \varphi_{ui}} \quad (9)$$



**Figure 4.** Phasor diagram of V and I vectors

**Source:** [Ma et al., 2015](#), [Liang et al., 2020](#).

The adaptive protection criterion is established from Equation (8). To this effect, it is important to define an adaptive adjustment coefficient ( $k_1$ ), which is responsible for readjusting the quadrilateral characteristics ( $R_{set}$  and  $X_{set}$ ) of the distance protection shown in Figure 2. The  $k_a$  factor is defined in Equation (10).

$$k_a = \left| \frac{\sin(\varphi_{line}) + \psi}{\sin(\varphi_{ui} + \psi)} \right| \quad (10)$$

#### D. Approach introduced by (Liang et al., 2020)

The approach by [Liang et al., 2020](#) proposes a protection scheme based on voltage amplitude comparison. The main objective is to reduce fault resistance problems by using the fault-point voltage, measured current, and setting impedance to establish a virtual measured voltage. The approach is

divided into two schemes: the first one identifies in-zone and out-of-zone faults from all types of faults by comparing the amplitudes of the original ( $\dot{U}_m$ ) presented in Equation (8) and the virtual ( $\dot{U}'_m$ ) measured voltages in Equation (11).

$$\dot{U}'_m = \dot{I}_m Z_{set} + \dot{U}_f \quad (11)$$

According to Figure 4, a phasor analysis is performed to represent the original and virtual voltages. Consequently, a new distance protection criterion is proposed, as shown in Equation (12).

$$\begin{cases} |\dot{U}'_m| \geq |\dot{U}_m|, & \text{in zone fault} \\ |\dot{U}'_m| < |\dot{U}_m|, & \text{out of zone fault} \end{cases} \quad (12)$$

The second scheme is aimed to identify in-zone and out-of-zone faults under all fault types, based on the improved original and virtual measured voltages. It is considered essential to improve the sensitivity of distance protection because the measured fault voltage varies according to the fault resistance, which can lead to measurement and calculation errors; an in-zone fault may be misidentified as an out-of-zone fault, thus causing a distance protection malfunction.

Consequently, the sensitivity of the proposed protection scheme is then improved by introducing a special voltage phasor ( $\dot{U}_{fset}$ ), which is expressed in Equation (13).

$$\dot{U}_{fset} = U_{set} < (\dot{U}_f) \quad (13)$$

where  $U_{set}$  is the setting voltage. Therefore, the voltages in Equations (8) and (11) are modified by replacing the fault voltage ( $\dot{U}_f$ ) with the special voltage phasor ( $\dot{U}_{fset}$ ), obtaining the improved original ( $\dot{U}_{m\_imp}$ ) and improved virtual ( $\dot{U}'_{m\_imp}$ ) voltages as a result. Thus, the proposed protection criterion shown in Equation (12) is conserved, but the compared magnitudes change with these improved measures. Equations (14) and (15) show the possible values of the  $\dot{U}_{m\_imp}$  and  $\dot{U}'_{m\_imp}$  magnitudes determined from Figure 4.

If  $|\dot{U}_f| < U_{set}$

$$\begin{aligned} |\dot{U}_{m\_imp}| &= |\dot{U}_m|; & |\dot{U}'_{m\_imp}| &= |\dot{U}'_m| \\ |\dot{U}'_m| &= \sqrt{|\dot{U}_m|^2 \left( \frac{\sin \varphi_{mz}}{\sin \varphi_{fz}} \right)^2 + |\dot{I}_m Z_{set}|^2 + 2|\dot{U}_m| |\dot{I}_m Z_{set}| \sin \varphi_{mz} \cot \varphi_{fz}} \end{aligned} \quad (14)$$

If  $|\dot{U}_f| \geq U_{set}$

$$\begin{aligned} |\dot{U}_{m\_imp}| &= \sqrt{|\dot{U}_m|^2 + (|\dot{U}_f| - U_{set})^2 - 2|\dot{U}_m| (|\dot{U}_f| - U_{set}) \cos(\varphi_{fz} - \varphi_{mz})} \\ |\dot{U}'_{m\_imp}| &= \sqrt{U_{set}^2 + |\dot{I}_m Z_{set}|^2 + 2U_{set} |\dot{I}_m Z_{set}| \cos \varphi_{fz}} \end{aligned} \quad (15)$$

where  $\varphi_{fz}$  is the angular difference between  $\dot{I}_m Z$  and  $\dot{U}_f$ , and  $\varphi_{mz}$  is the angular difference between  $\dot{I}_m Z$  and  $\dot{U}_m$ , as presented in Figure 4

### E. Approach proposed by (Yin *et al.*, 2021)

A particular case unfolds when DG units are connected at the utility side of the transformer. It is therefore interesting to analyze the problems and challenges associated with the point of interconnection (POI). In Yin *et al.*, 2021, a new distance protection method is presented, whose objective is to introduce an enhanced measured impedance calculation using residual voltage compensation to correctly and timely detect all fault types, particularly SLG faults at the POI. The protection scheme considers a previous analysis of the apparent impedance for SLG faults, aimed to find the root cause of the incorrect apparent impedance seen by the distance relay on the DG side. In this case, the distance relay on the DG integration side sees an SLG fault in the interconnection line as a phase-to-phase fault due to the commonly used delta-wye transformer configuration.

The proposal is based on a residual-voltage-compensated method for reliable POI protection. To this effect, a broken-delta high-voltage transformer (VT) is used to feed the proposed relays 21 on the DG integration side in order to provide residual voltage ( $V_0$ ) for calculating the compensated impedance. This adjustment enables the measurement of the correct apparent impedance for all faults, including SLG faults by the relay. The following considerations must be made: (i)  $V_0$  on the utility side should be converted to the DG side, and (ii) the angle of  $V_0$  needs to be shifted based on the interconnection transformer winding connection. After considering the impedance compensations for the transformer winding connection used (YD11), the measured impedance for the phase-to-ground ( $Z_{m,ag}$ ) can be obtained as shown in Equation (16).

$$Z_{m,ag} = \frac{V_a - V_b}{I_a - I_b} + \frac{V_0 e^{j30}}{2I_{1DG}} \quad (16)$$

where  $I_{1DG}$  is the positive sequence fault current contributions from the DG side. Considering the above, the proposed five-module distance relay is presented in Figure 5. The modules are as follows:

1. *Phasor calculation module*: it calculates the phasor values from the CTs and VTs using sampling techniques.
2. *Impedance compensation module*: it estimates the compensation factor using the residual voltage at the utility side and the positive-sequence current at the DG side.
3. *Angle shift module*: it shifts the angle of  $V_0$  based on the interconnection transformer winding configuration.
4. *Impedance calculation module*: it calculates the measured impedance based on transformer connection.
5. *Fault detection module*: it detects the fault using typical distance relay operation characteristics.

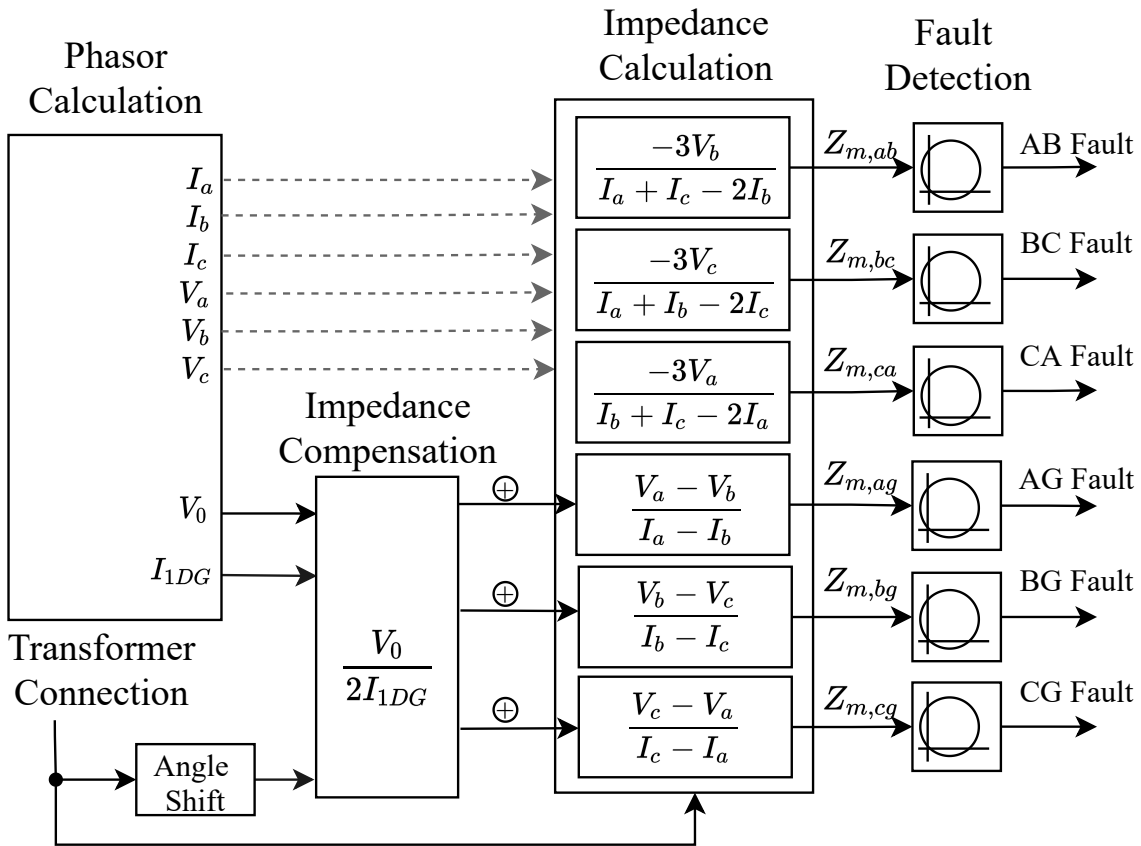


Figure 5. Block diagram of distance relay with residual voltage compensation

Source: Yin *et al.*, 2021.

## F. Approach presented by (Chen *et al.*, 2018)

The detection of the active power flow direction in case of a fault is critical for the correct operation of 21 protection. Chen *et al.*, 2018 propose a distance relay in the time domain based on the R-L differential equation algorithm, which is suitable for wind power integration systems and also solves the direction identification problem mainly when zero-voltage faults occur.

The proposal considers a directional element based on the time domain and the differentiated characteristics of the memory voltage drop and the actual voltage drop, on equivalent impedance from relay location to power sources under forward and reverse fault conditions. This proposal also includes the correlation criterion to detect the fault direction. In this approach, a model of double-fed induction generator (DFIG) based wind farm with characteristics of the transient electromotive force (EMF) is established. To determine the directional feature, the memory voltages drop ( $\dot{U}_1, \dot{U}_3$ ), and the actual voltages ( $\dot{U}_2, \dot{U}_4$ ) are used as follows:

1. If  $\dot{U}_1$  and  $\dot{U}_2$  have the same variation trend after the fault, it is a forward fault.

2. If  $\dot{U}_3$  and  $\dot{U}_4$  have the same variation trend after the fault, it is a reverse fault.

These voltages are obtained as shown in Equation (17).

$$\begin{aligned}\dot{U}_1 &= \dot{U}_{m,m} + \left( R_{GD} \dot{I}_{m,m} + L_{DG} \frac{d\dot{I}_{m,m}}{dt} \right) - \dot{U}_{m,f} \\ \dot{U}_2 &= R_{DG} \dot{I}_{m,f} + L_{DG} \frac{d\dot{I}_{m,f}}{dt} \\ \dot{U}_3 &= \dot{U}_{m,m} + (R_{G1} + R_l) \dot{I}_{m,m} - (L_{G1} + L_l) \frac{d\dot{I}_{m,m}}{dt} - \dot{U}_{m,f} \\ \dot{U}_4 &= -(R_{G1} + R_l) \dot{I}_{m,f} - (L_{G1} + L_l) \frac{d\dot{I}_{m,f}}{dt}\end{aligned}\quad (17)$$

where,  $\dot{U}_{m,m}$  and  $\dot{I}_{m,m}$  are the memory voltage and memory current; and  $\dot{U}_{m,f}$  and  $\dot{I}_{m,f}$  are the measured voltage and measured current after a fault, respectively. Next, if  $\dot{U}_m$  after the fault is higher than  $U_{set}$ , a distance ( $l$ ) from the relay location to the fault point is calculated based on the R-L differential-equation algorithm, as given by Equation (18). If the estimated distance  $l$  is larger than the setting value  $l_{set}$ , it is an external fault. If  $0 < l < l_{set}$ , it is an internal fault. If the estimated distance,  $l$ , is negative, it is an external fault. If the  $\dot{U}_m$  after the fault is lower than  $U_{set}$ , the previously described method is used to detect the fault direction.

$$\dot{U}_m = \dot{U}_f + \left[ L_{l1} \frac{d(\dot{I}_m - \dot{I}_{m0})}{dt} + R_{l1}(\dot{I}_m - \dot{I}_{m0}) + L_{l0} \frac{d\dot{I}_{m0}}{dt} + R_{l0} \dot{I}_{m0} l \right] \quad (18)$$

### G. Approach introduced by (Tsimtsios *et al.*, 2019):

Several protection proposals use communication systems to adapt and improve the operational performance of distance protection. As an example, a pilot-based distance protection scheme for meshed distribution systems with DG is proposed by Tsimtsios *et al.*, 2019. The main contribution of this approach is proposing an efficient protection strategy for meshed grids since most of the networks that integrate DGs are radial, and this scheme provides protection with a considerable fault resistance and under the infeed conditions.

The meshed distribution system used in the test contains forward and reverse distance protection, which is essential to detecting the fault direction in its corresponding zones. The proposed logic depends on these elements, as well as the correct operation of the communication system. The approach proposes that, after the fault impedance estimation, the algorithm checks if it lies inside the forward distance zone. In that case (and after the time required for the relay to respond expires), a permission signal is sent to forward distance elements (FDE). If a permission signal is received from FDE at the same time, the circuit breaker (CB) is tripped. If the CB fails to open, a breaker-failure function is designed for the adjacent CBs.

## H. Approach presented by (Tsimtsios *et al.*, 2019a, Tsimtsios *et al.*, 2019b)

A generalized distance-based protection design for DG integrated MV radial distribution networks is proposed in two parts. The former, presented in Tsimtsios *et al.*, 2019a, proposes a complete guideline for designing directly applicable and economically feasible distance protection schemes for medium-voltage (MV) radial distribution systems with distributed generation. In the second part, these guidelines are applied to a real MV radial overhead distribution line with a high DG penetration level. The proposed guidelines intend to take account of distributed generation, dealing with the issues already mentioned in the previous sections and the coordination of relays 21. The procedure is systematic and independent of specific DG conditions, while it must be performed only once for a particular distribution system. Moreover, the designed protection scheme is intended to guarantee simplicity; to this effect, it installs the minimum number of distance relays, given that the proposed guidelines are implementable using existing distance relay technology and without using communication means. This guideline is divided into the following sections: 1) basic protection scheme design, 2) distance zone time setting criteria used to determine the time delay settings and the number of relays 21, 3) distance zones reach setting criteria used to determine the zones reactive/resistive coverage to ensure dependability, 4) unintentional lateral coverage setting criteria to address overreaching of laterals by lower-step distance zones; and 5) the additional setting adjustments.

## METHODOLOGY

The approaches analyzed above present several alternatives that contribute to mitigating the problems associated with distance protection applied to ADNs. However, to identify future opportunities to develop research proposals related with that protection, a comparative analysis of the proposals above is considered in this paper, which is presented in Table 1. This qualitative analysis allows identifying research gaps and associated challenges related to applying distance protection relays. As can be seen, no proposal covers all the ADN protection requirements. This represents a challenging task, and it suggests the importance of proposing and developing new strategies for adequate ADN protection.

## CONCLUSIONS

This paper provides a comprehensive review of some recent adaptive protection strategies based on the implementation of distance relays in ADNs. The analysis compares the advantages, difficulties, and limitations of these approaches based on their operational characteristics. In addition, the proposals are classified according to the different issues covered in their models, thus affecting the protective device's correct performance. Therefore, it is concluded that, despite all the efforts made

**Table 1.** Comparison of protection approaches based on distance relays

Reference	Issues					Applied to			Observations
	Infeed Effect	Fault Resist.	Direction	Communic.	$K_0$ factor	Transmission	Distribution	ADN	
<a href="#">Sinclair et al., 2014</a>	•	•			•		•	•	This considers a perfect performance of the directional relay feature.
<a href="#">Tsimtsios &amp; Nikolaidis, 2018</a>	•				•		•	•	The effect of the fault resistance is not considered. The setting criteria for coverage and time delay in case of faults in remote relay areas is not analyzed.
<a href="#">Ma et al., 2015</a>		•			•	•			The proposed scheme is not affected by transition fault resistance or load current in transmission lines, or even in ADN.
<a href="#">Liang et al., 2020</a>		•				•			The mitigation of CT saturation and VT errors is considered to improve 21 performance.
<a href="#">Yin et al., 2021</a>		•	•		•	•	•	•	This proposal provides an economical solution as it can be implemented in the existing distance relay platform. Nonetheless, its application is limited to relays at the POI.
<a href="#">Chen et al., 2018</a>			•			•		•	The direction method is easy to implement within a short data window under zero-voltage faults. This is analyzed only for transmission lines that integrate DG.
<a href="#">Tsimtsios et al., 2019</a>	•	•	•	•	•		•	•	This approach depends on a communication system to function properly, which affects the reliability of the protection scheme.
<a href="#">Tsimtsios et al., 2019a</a> <a href="#">Tsimtsios et al., 2019b</a>	•	•			•	•	•	•	These protection schemes are economically feasible since the distance relays depend only on local measurements.

Source: Authors.



to propose solutions to mitigate ADN protection issues, there is no efficient strategy for all types of faults in a selective, sensitive, reliable, and cost-effective way, ensuring minimum supply disruption to consumers. Finally, this paper provides directions for developing more complete strategies to adequately improve the AND protection.

## FUNDING

This paper is a result from projects 6-20-6 funded by Universidad Tecnológica de Pereira and contract 774-2020 (Integra2023) funded by Minciencias, Colombia.

## REFERENCES

- [Alam, 2019] Alam, M. N. (2019). Adaptive protection coordination scheme using numerical directional overcurrent relays. *IEEE Transactions on Industrial Informatics*, 15(1), 64-73. <https://doi.org/10.1109/TII.2018.2834474> ↑See page 148
- [Bansal, 2019] Bansal, R. (2019). *Power system protection in smart grid environment*. CRC Press. <https://doi.org/10.1201/9780429401756> ↑See page 150
- [Barra *et al.*, 2020] Barra, P., Coury, D., & Fernandes, R. (2020). A survey on adaptive protection of microgrids and distribution systems with distributed generators. *Renewable and Sustainable Energy Reviews*, 118, 109524. <https://doi.org/10.1016/j.rser.2019.109524> ↑See page 148
- [Borlase, 2017] Borlase, S. (2017). *Smart grids: Advanced technologies and solutions*. CRC press. ↑See page 149, 150, 151
- [Buitrago-Arroyave & López-Lezama, 2013] Buitrago-Arroyave, L. F., & López-Lezama, J. M. (2013). Valoración de los impactos técnicos de la generación distribuida en sistemas de energía eléctrica. *Tecnura*, 17(36), 50-60. <https://doi.org/10.14483/udistrital.jour.tecnura.2013.2.a04> ↑See page 148
- [Carvajal & Marín-Jiménez, 2013] Carvajal, S., & Marín-Jiménez, J. D. (2013). Impacto de la generación distribuida en el sistema eléctrico de potencia colombiano: un enfoque dinámico. *Tecnura*, 17(35), 77-89. <https://doi.org/10.14483/udistrital.jour.tecnura.2013.1.a07> ↑See page 148
- [Chen *et al.*, 2018] Chen, Y., Wen, M., Yin, X., Cai, Y., & Zheng, J. (2018). Distance protection for transmission lines of dfig-based wind power integration system. *International Journal of Electrical Power Energy Systems*, 100, 438-448. doi: <https://doi.org/10.1016/j.ijepes.2018.02.041> ↑See page 148, 149, 158, 161

- [El-Arroudi & Joós, 2018] El-Arroudi, K., & Joós, G. (2018). Performance of interconnection protection based on distance relaying for wind power distributed generation. *IEEE Transactions on Power Delivery*, 33(2), 620-629. <https://doi.org/10.1109/TPWRD.2017.2693292> ↑See page 149
- [Ghorbani *et al.*, 2021] Ghorbani, A., Mehrjerdi, H., & Sanaye-Pasand, M. (2021). An accurate non-pilot scheme for accelerated trip of distance relay zone-2 faults. *IEEE Transactions on Power Delivery*, 36(3), 1370-1379. <https://doi.org/10.1109/TPWRD.2020.3007559> ↑See page 149
- [Giral *et al.*, 2017] Giral, W., Celedón, H., Galvis, E., & Zona, A. (2017). Redes inteligentes en el sistema eléctrico colombiano: revisión de tema. *Tecnura*, 21(53), 119-137, <https://doi.org/10.14483/22487638.12396> ↑See page 148
- [Hooshyar & Iravani, 2017] Hooshyar, A., & Iravani, R. (2017). Microgrid protection. *Proceedings of the IEEE*, 105(7), 1332-1353. <https://doi.org/10.1109/JPROC.2017.2669342> ↑See page 151, 152
- [Jia *et al.*, 2019] Jia, J., Yang, G., Nielsen, A. H., & Rønne-Hansen, P. (2019). Impact of vsc control strategies and incorporation of synchronous condensers on distance protection under unbalanced faults. *IEEE Transactions on Industrial Electronics*, 66(2), 1108-1118. <https://doi.org/10.1109/TIE.2018.2835389> ↑See page 149
- [Jin *et al.*, 2018] Jin, X., Gokaraju, R., Wierckx, R., & Nayak, O. (2018). High speed digital distance relaying scheme using FPGA and IEC 61850. *IEEE Transactions on Smart Grid*, 9(5), 4383-4393. <https://doi.org/10.1109/TSG.2017.2655499> ↑See page 149
- [Lavand & Soman, 2016] Lavand, S. A., & Soman, S. A. (2016). Predictive analytic to supervise zone 1 of distance relay using synchrophasors. *IEEE Transactions on Power Delivery*, 31(4), 1844-1854. <https://doi.org/10.1109/TPWRD.2016.2521784> ↑See page 149
- [Li *et al.*, 2021] Li, H., Deng, C., Zhang, Z., Liang, Y., & Wang, G. (2021). An adaptive fault-component-based current differential protection scheme for distribution networks with inverter-based distributed generators. *International Journal of Electrical Power Energy Systems*, 128, 106719. <https://doi.org/10.1016/j.ijepes.2020.106719> ↑See page 148
- [Liang *et al.*, 2020] Liang, Y., Li, W., Lu, Z., Xu, G., & Wang, C. (2020). A new distance protection scheme based on improved virtual measured voltage. *IEEE Transactions on Power Delivery*, 35(2), 774-786. <https://doi.org/10.1109/TPWRD.2019.2926295> ↑See page 148, 149, 155, 161
- [Liu *et al.*, 2019] Liu, S., Jin, X. S., & Gokaraju, R. R. (2019). High-speed distance relaying using least error squares method and testing with FPGA. *IET Generation, Transmission & Distribution*, 13(16), 3591-3600. <https://doi.org/10.1049/iet-gtd.2019.0088> ↑See page 149

- [Ma *et al.*, 2015] Ma, J., Ma, W., Qiu, Y., & Thorp, J. S. (2015). An adaptive distance protection scheme based on the voltage drop equation. *IEEE Transactions on Power Delivery*, 30(4), 1931-1940. <https://doi.org/10.1109/TPWRD.2015.240495> ↑See page 147, 149, 154, 155, 161
- [Ma & Wang, 2018] Ma, J., & Wang, Z. (2018). *Hierarchical protection for smart grids*. John Wiley & Sons. ↑See page 150
- [Mohajeri *et al.*, 2015] Mohajeri, A., Seyedi, H., & Sabahi, M. (2015). Optimal setting of distance relays quadrilateral characteristic considering the uncertain effective parameters. *International Journal of Electrical Power & Energy Systems*, 73, 1051-1059. <https://doi.org/10.1016/j.ijepes.2015.06.011> ↑See page 151, 152
- [Nikolaidis *et al.*, 2018] Nikolaidis, V. C., Tsimtsios, A. M., & Safigianni, A. S. (2018). Investigating particularities of infeed and fault resistance effect on distance relays protecting radial distribution feeders with dg. *IEEE Access*, 6, 11301-11312. <https://doi.org/10.1109/ACCESS.2018.2804046> ↑See page 147, 149, 152, 154
- [Rafique *et al.*, 2020] Rafique, Z., Khalid, H. M., & Muyeen, S. M. (2020). Communication systems in distributed generation: A bibliographical review and frameworks. *IEEE Access*, 8, 207226-207239. <https://doi.org/10.1109/ACCESS.2020.3037196> ↑See page 148
- [Regulski *et al.*, 2021] Regulski, P., Rebizant, W., Kereit, M., & Schneider, S. (2021). Adaptive reach of the 3rd zone of a distance relay with synchronized measurements. *IEEE Transactions on Power Delivery*, 36(1), 135-144. <https://doi.org/10.1109/TPWRD.2020.2974587> ↑See page 149
- [Sarangi *et al.*, 2021] Sarangi, S., Sahu, B. K., & Rout, P. K. (2021). Review of distributed generator integrated ac microgrid protection: issues, strategies, and future trends. *International Journal of Energy Research*, 45(10), 14117-14144. <https://doi.org/10.1002/er.6689> ↑See page 148
- [Sinclair *et al.*, 2014] Sinclair, A., Finney, D., Martin, D., & Sharma, P. (2014). Distance protection in distribution systems: How it assists with integrating distributed resources. *IEEE Transactions on Industry Applications*, 50(3), 2186-2196. <https://doi.org/10.1109/TIA.2013.2288426> ↑See page 147, 149, 151, 152, 161
- [Tsimtsios *et al.*, 2019] Tsimtsios, A. M., Korres, G. N., & Nikolaidis, V. C. (2019). A pilot-based distance protection scheme for meshed distribution systems with distributed generation. *International Journal of Electrical Power & Energy Systems*, 105, 454-469. <https://doi.org/10.1016/j.ijepes.2018.08.022> ↑See page 148, 149, 159, 161
- [Tsimtsios & Nikolaidis, 2018] Tsimtsios, A. M., & Nikolaidis, V. C. (2018). Setting zero-sequence compensation factor in distance relays protecting distribution systems. *IEEE Transactions on Power Delivery*, 33(3), 1236-1246. <https://doi.org/10.1109/TPWRD.2017.2762465> ↑See page 149, 154, 161

- [Tsimtsios *et al.*, 2019a] Tsimtsios, A. M., Safigianni, A. S., & Nikolaidis, V. C. (2019a). Generalized distance-based protection design for dg integrated mv radial distribution networks — part i: Guidelines. *Electric Power Systems Research*, 176, 105949. <https://doi.org/10.1016/j.epsr.2019.105949> ↑See page 148, 149, 160, 161
- [Tsimtsios *et al.*, 2019b] Tsimtsios, A. M., Safigianni, A. S., & Nikolaidis, V. C. (2019b). Generalized distance-based protection design for dg integrated mv radial distribution networks —part ii: Application to an actual distribution line. *Electric Power Systems Research*, 176, 105950. <https://doi.org/10.1016/j.epsr.2019.105950> ↑See page 148, 149, 160, 161
- [Usama *et al.*, 2021] Usama, M., Mokhlis, H., Moghavvemi, M., Mansor, N. N., Alotaibi, M. A., Muhammad, M. A., & Bajwa, A. A. (2021). A comprehensive review on protection strategies to mitigate the impact of renewable energy sources on interconnected distribution networks. *IEEE Access*, 9, 35740-35765. <https://doi.org/10.1109/ACCESS.2021.3061919> ↑See page 148, 151
- [Vázquez *et al.*, 2020] Vázquez, M. E., Zamora-Méndez, A., Arrieta-Paternina, M. R., Trujillo-Guajardo, L. A., & de la O Serna, J. A. (2020). Dynamic phasor-driven digital distance relays protection. *Electric Power Systems Research*, 184, 106316. <https://doi.org/10.1016/j.epsr.2020.106316> ↑See page 150
- [Yin *et al.*, 2021] Yin, Y., Fu, Y., Zhang, Z., & Zamani, A. (2021). Protection of microgrid interconnection lines using distance relay with residual voltage compensation. *IEEE Transactions on Power Delivery*, 9369070. <https://doi.org/10.1109/TPWRD.2021.3063684> ↑See page 148, 149, 157, 158, 161
- [Zamora-Méndez *et al.*, 2016] Zamora-Méndez, A., Arrieta-Paternina, M. R. A., Vázquez, M. E., Ramírez, J. M., & la O de Serna, J. A. (2016). Distance relays based on the taylor–kalman-fourier filter. *IEEE Transactions on Power Delivery*, 31(3), 928-935. <https://doi.org/10.1109/TPWRD.2015.239212> ↑See page 150

