

Letter to the editor

Open Access

Inhibition of mTOR signaling by rapamycin protects photoreceptors from degeneration in *rd1* mice

Retinitis pigmentosa (RP) is an inherited retinal degenerative disease that begins with defective rod photoreceptor function, followed by impaired cone function, and complete blindness in its late stage. To date, however, there is no effective treatment for RP. By carrying a nonsense mutation in the *Pde6b* gene, *rd1* mice display elevated cGMP in conjunction with higher intracellular Ca^{2+} in their rod photoreceptors, resulting in fast retinal degeneration. Ca^{2+} has been linked to activation of the mammalian target of rapamycin (mTOR) pathway. The mTOR pathway integrates extracellular and intracellular signals to sense the supply of nutrients and plays a central role in regulating protein and lipid synthesis as well as apoptosis and autophagy. In the present study, we showed that mTOR and phosphorylated mTOR (p-mTOR, activated form of mTOR) are up-regulated in *rd1* photoreceptors at postnatal day 10 (P10), a pre-degenerative stage. Moreover, the downstream effectors of mTOR, such as pS6K and S6K, are also increased, suggesting activation of the mTOR signaling pathway. Intravitreal administration of rapamycin, a negative regulator of mTOR, inhibits the mTOR pathway in *rd1* photoreceptors. Consequently, the progression of retinal degeneration is slower and retinal function is enhanced, possibly mediated by activation of autophagy in the photoreceptors. Taken together, these results highlight rapamycin as a potential therapeutic avenue for retinal degeneration.

RP is a devastating retinal disease that begins with impaired functions of the rod photoreceptors and subsequently affects the cone photoreceptors, ending with complete blindness in the late stage (Dias et al., 2018; Hartong et al., 2006). Over 70 genes are known to be associated with RP (Dicarlo et al., 2018), highlighting the complexity of this disease. To understand the underlying mechanism of RP and explore potential treatment strategies, numerous engineered mouse models have been generated (Collin et al., 2020). Additionally,

This is an open-access article distributed under the terms of the Creative Commons Attribution Non-Commercial License (<http://creativecommons.org/licenses/by-nc/4.0/>), which permits unrestricted non-commercial use, distribution, and reproduction in any medium, provided the original work is properly cited.

Copyright ©2021 Editorial Office of Zoological Research, Kunming Institute of Zoology, Chinese Academy of Sciences

dozens of inbred mouse lines harboring spontaneous mutations are a great resource for the study of retinal degeneration. The *rd1* mouse model, with a spontaneous nonsense mutation in *Pde6b*, was developed as early as 1924 (Keeler, 1924, 1966) and is still widely used in studies on retinal degeneration (Pittler & Baehr, 1991; Pittler et al., 1993).

Pde6b encodes the beta subunit of rod PDE6. As a key enzyme in the phototransduction cascade in rod photoreceptors, PDE6 catalyzes the hydrolysis of cGMP to GMP. Moreover, PDE6 is required for maintaining cGMP homeostasis in dark-adapted photoreceptors (Doshi et al., 1985; Ferrendelli & Cohen, 1976), essentially in two ways: (1) non-stimulating stochastic activation of PDE6 can hydrolyze cGMP by thermal activation (Rieke & Baylor, 1996) and (2) non-catalytic cGMP binding domains within alpha and beta subunits sequester a significant fraction of free cGMP (Gillespie & Beavo, 1989). In *rd1* mice, the *Pde6b* loss-of-function mutation results in elevated levels of free cGMP in the rod photoreceptors. Increased cGMP concentration causes more cGMP-gated channels to open, allowing an influx of calcium into the photoreceptors (Arshavsky et al., 2002). Excess calcium is toxic to photoreceptor cells and induces the rapid degeneration of rod photoreceptors. At three weeks after birth, nearly all rod photoreceptors in the *rd1* retina have degenerated (Farber, 1995). The mechanism behind this rapid degeneration is not fully understood.

Calcium ion is a messenger that mediates multiple intracellular processes. Elevated calcium released from the lysosome can activate the mTOR signaling pathway, which is mediated by calmodulin (Li et al., 2016). mTOR, a conserved serine/threonine protein kinase, is the central component shared by two protein complexes: mTORC1 and mTORC2 (Loewith et al., 2002; Reinke et al., 2004). mTORC1 consists

Received: 17 April 2021; Accepted: 30 June 2021; Online: 05 July 2021

Foundation items: This study was supported by the National Precision Medicine Project (2016YFC0905200) (Z.Y. & H.Z.), National Natural Science Foundation of China (81570882 (H.Z.), 81770935 (H.Z.)), Department of Science and Technology of Sichuan Province, China ((2020YJ0445) (H.Z.), 2020ZYD037 (Z.Y.)), and CAMS Innovation Fund for Medical Sciences (2019-I2M-5-032) (Z.Y.)

of the regulatory-associated protein of mTOR (Raptor) (Hara et al., 2002; Kim et al., 2002), whereas mTORC2 includes the rapamycin-insensitive companion of mTOR (Rictor) (Jacinto et al., 2004; Sarbassov et al., 2004). mTORC1 is a hub that integrates extracellular and intracellular signaling. It plays a central role in promoting cell proliferation, protein synthesis (Beretta et al., 1996; Chung et al., 1992), and lipid synthesis (Düvel et al., 2010), and in inhibiting autophagy (Dubouloz et al., 2005). mTOR is the target of rapamycin, an immunosuppressant and anti-tumor drug (Douros & Suffness, 1981; Sehgal & Bansbach, 1993). Binding of rapamycin to mTOR negatively regulates mTORC1, but not mTORC2 (Loewith et al., 2002). The mTOR signaling pathway also modulates the apoptotic effect induced by oxidative stress in cultured cells (Majumder et al., 2004). A prior study showed that the mTOR signaling pathway is activated in an RP mouse model carrying a missense mutation in the *Pde6b* gene (H620Q) (Tsang et al., 2014). However, the role that the mTOR signaling pathway plays in retinal degeneration is yet to be elucidated.

To test whether the mTOR signaling pathway is activated in *rd1* photoreceptors, retinal sections from *rd1* mice were immunostained with antibodies against mTOR and p-mTOR, two central components of the mTOR pathway. As shown in Supplementary Figure S1A, B, significantly more mTOR and p-mTOR, an activated form of mTOR, were detected in the P10 *rd1* photoreceptors, suggesting that the mTOR signaling pathway was activated in the *rd1* mouse photoreceptors. This is consistent with previous research showing activation of mTOR in another mouse model with a missense mutation in *Pde6b* (Tsang et al., 2014). One of the major targets downstream of activated mTOR is the ribosomal protein S6 kinase (S6K), which can be phosphorylated by mTOR. Hence, as expected, significantly more phosphorylated S6K (p-S6K), the activated form of S6K, was present in the *rd1* photoreceptors (Supplementary Figure S1C). Additionally, S6K was up-regulated in the *rd1* photoreceptors (Supplementary Figure S1D). These results suggest more active protein synthesis in *rd1* photoreceptors. However, immunoblotting examination of the key phototransduction proteins in the rod photoreceptors showed that the expression of rhodopsin, guanylate cyclase 2 (GC2), and transducin α ($T\alpha$) were not increased in the *rd1* retinas (Supplementary Figure S1E). Instead, their expression was unaltered ($T\alpha$) or markedly reduced (rhodopsin and GC2) in the *rd1* photoreceptors, suggesting a more active protein turnover and complicated regulatory mechanism governing protein expression in photoreceptors.

The retina is one of the most metabolically active tissues in the body. Photoreceptors consume a substantial amount of energy to maintain the dark current in the dark-adapted state. Activation of the mTOR signaling pathway in *rd1* photoreceptors may place an extra burden on the cells, which could contribute to the fast death of photoreceptors in the *rd1* retina. To explore the role of the mTOR signaling pathway in photoreceptor viability in the *rd1* retina, we inhibited the mTOR pathway using rapamycin. We mixed rapamycin with lipid emulsion, which can slow the release of rapamycin and prolong its presence (Hippalgaonkar et al., 2010; Sakaeda &

Hirano, 1995). We administered an intravitreal injection of rapamycin in *rd1* mice at P10, a time point before retinal degeneration is evident. Approximately one day (20 h) later, the expression of mTOR was attenuated in a dose-dependent manner (Supplementary Figure S2A–C). Moreover, mTOR phosphorylation was significantly reduced. These results indicate that rapamycin can effectively inhibit the mTOR signaling pathway by reducing mTOR expression and mTOR phosphorylation. Although mTOR and p-mTOR were reduced, p-S6K, and S6K (downstream target of mTOR) was not affected in the *rd1* photoreceptors after rapamycin treatment (Supplementary Figure S2A–C), implying that phosphorylation of S6K in the *rd1* photoreceptors is dominated by a yet-to-be-identified pathway.

To test whether inhibition of the mTOR signaling pathway by rapamycin protects the *rd1* retinal photoreceptors, a TUNEL assay was carried out on the retinal sections. As shown in Figure 1A, B, rapamycin exhibited a dose-dependent protective effect on the *rd1* photoreceptors. The rapamycin-treated retinas had fewer TUNEL-positive cells, with rapamycin at 25 $\mu\text{mol/L}$ being the most effective. Western blot analysis using cleaved caspase 3 confirmed reduced apoptotic activities in the rapamycin-treated retinas (Figure 1C, D). Thus, rapamycin effectively protected *rd1* retinal photoreceptors from apoptosis.

To test whether rapamycin can slow the progression of *rd1* retinal degeneration, retinas were analyzed 6 days after intravitreal administration of a single dose of rapamycin. In the vehicle-treated *rd1* retinas, only 1–2 rows of nuclei remained in the outer nuclear layer (ONL) across the entire *rd1* retina (Figure 1E), indicating fast degeneration. In contrast, those retinas treated with rapamycin had significantly more rows of nuclei in the ONL (Figure 1E). Remarkably, retinas treated with 25 $\mu\text{mol/L}$ or 50 $\mu\text{mol/L}$ rapamycin had 4–6 rows of nuclei, indicating that one dose of rapamycin was sufficient to slow retinal degeneration. Relative to the vehicle control, the ONL thickness of all rapamycin-treated retinas was consistently greater across the entire retina (Figure 1F).

Additionally, the protective effect of rapamycin on rod photoreceptors also partially rescued cone photoreceptor function. As shown in Figure 1G, the photopic response was almost undetectable in the vehicle-treated and 10 $\mu\text{mol/L}$ rapamycin-treated mice, indicating that cone cells lose their function after the rods are nearly completely degenerated by P16. In contrast, the 25 $\mu\text{mol/L}$ and 50 $\mu\text{mol/L}$ rapamycin-treated mice exhibited sizable responses with significantly higher amplitudes. Thus, rapamycin is a potent drug that can inhibit retinal degeneration and preserve the function of cone photoreceptors.

To gain insight into the protective mechanism of rapamycin, phototransduction protein expression in rapamycin-treated *rd1* retinas was analyzed by immunoblotting. As shown in Supplementary Figure S3A, B, rapamycin did not change the expression of rhodopsin or transducin. Hence, the protective effects of rapamycin on photoreceptors does not appear to be mediated by phototransduction proteins. Next, we examined the expression of autophagy pathway-related proteins, including LC3B and SQSTM1, which are two markers of autophagy flux. Autophagy plays a vital role in photoreceptor

survival by inhibiting apoptosis (Besirli et al., 2011). Furthermore, mTOR is a negative regulator of autophagy. Thus, inhibition of the mTOR pathway by rapamycin may reactivate autophagy to exert its protective functions. As shown in Supplementary Figure S3C–E, in the presence of hydroxychloroquine (HCQ), which inhibits autophagosome-lysosome fusion and prevents degradation of components associated with autophagosomes, rapamycin significantly increased the ratio of LC3B-II to LC3B-I and reduced the expression of SQSTM1 in a dose-dependent manner, suggesting that rapamycin promotes autophagy flux in *rd1* photoreceptors.

To verify that the suppression of retinal degeneration by inhibition of the mTOR pathway is mediated by autophagy

activation, we treated *rd1* mice with Torin 1, a more potent inhibitor of the mTOR pathway. As shown in Supplementary Figure S4A, B, Torin 1 robustly inhibited the expression and phosphorylation of mTOR at a concentration of 10 $\mu\text{mol/L}$. Torin 1 also inhibited photoreceptor apoptosis and slowed the progression of retinal degeneration in *rd1* retinas (Supplementary Figure S4C–F). Interestingly, similar to rapamycin, Torin 1 also increased the LC3B-II/LC3B-I ratio and reduced SQSTM1 expression in a dose-dependent manner, demonstrating the activation of autophagy by Torin 1 in *rd1* retinas (Supplementary Figure S4G–I). Furthermore, the autophagy inhibitor HCQ abolished the rescue effects of rapamycin and Torin 1 on *rd1* photoreceptors (Supplementary Figure 5A, B). Therefore, the enhanced survival of

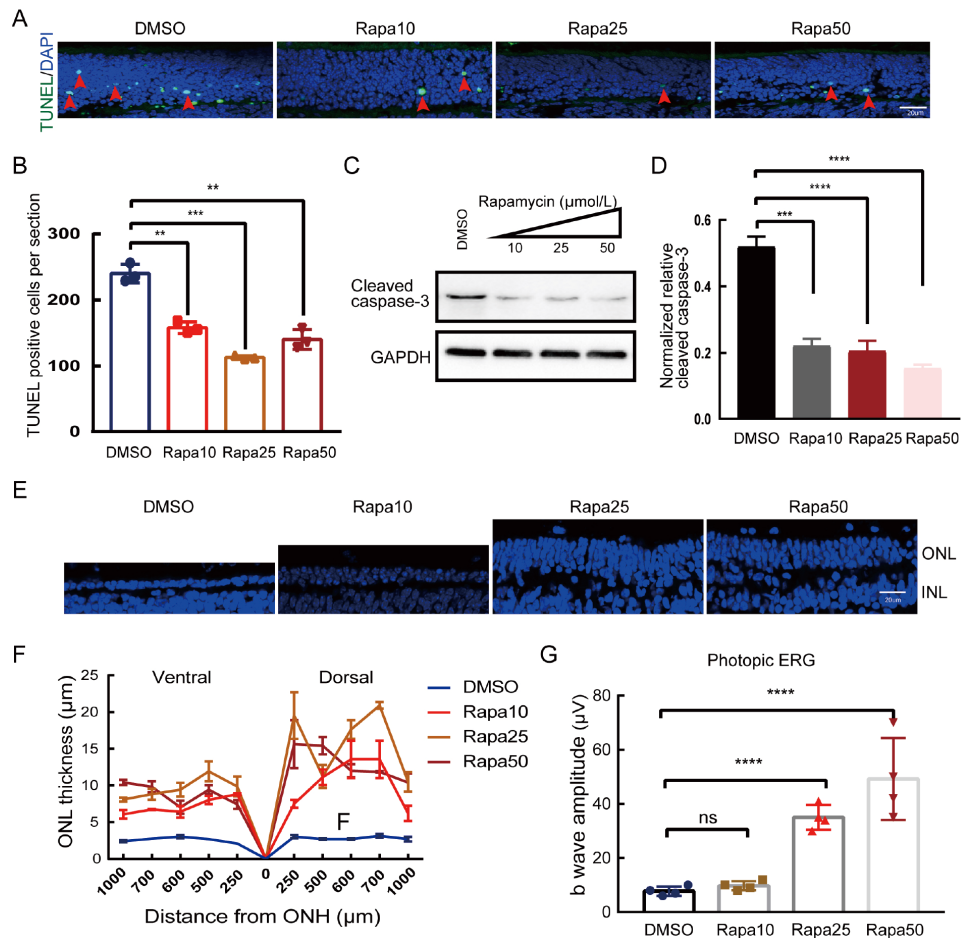


Figure 1 Inhibition of retinal degeneration and preservation of cone function in *rd1* mice treated with rapamycin

P10 *rd1* mice were treated by intravitreal injection of 10 $\mu\text{mol/L}$ (Rapa10), 25 $\mu\text{mol/L}$ (Rapa25), 50 $\mu\text{mol/L}$ rapamycin (Rapa50), or vehicle control (DMSO). A–D: Mice were analyzed 20 h after treatment. For each rapamycin-treated group, including vehicle control, $n=3$ mice/group. E–G: Mice were analyzed 6 days after treatment. For each rapamycin-treated group, including vehicle control, $n=4$ mice/group. A: Representative confocal images showing TUNEL signals in photoreceptors. Nuclei were stained by DAPI. Arrowheads indicate TUNEL-positive nuclei. Scale bar: 20 μm . B: Quantification of TUNEL-positive nuclei in entire retinal sections corresponding to images shown in (A). Data are mean \pm standard deviation (SD). **: $P<0.01$; ***: $P<0.001$. C: Western blot analysis was used to detect expression of apoptotic protein cleaved caspase 3. GAPDH was used as a loading control. D: Quantification of western blot signals shown in (C). Data are mean \pm SD. ***: $P<0.001$; ****: $P<0.0001$. E: Representative individual confocal images of retinal sections stained by DAPI (blue). Scale bar: 20 μm . ONL, outer nuclear layer; INL, inner nuclear layer. F: Measurement of ONL thickness along central meridian at 10 locations on dorsal to ventral axis in mouse eyes 6 days after treatment. G: Photopic electroretinograms (ERGs, recorded at 50 $\text{cd}\cdot\text{s}/\text{m}^2$) of *rd1* mice 6 days after rapamycin treatment. All quantification data are expressed as mean \pm SD. *: $P<0.05$; **: $P<0.01$; ***: $P<0.001$; ****: $P<0.0001$; ns: No significance $P>0.05$.

photoreceptors in *rd1* retinas by rapamycin or Torin 1 treatment is likely mediated by activation of the autophagy pathway.

In this study, we showed that the mTOR signaling pathway is activated in photoreceptors along with retinal degeneration in the *rd1* retinas. Furthermore, inhibition of the pathway by rapamycin or Torin 1 treatment protects the photoreceptors from apoptosis, indicating that the mTOR signaling pathway plays a vital role in retinal degeneration.

mTOR is the master regulator of metabolism. The mTOR signaling pathway is activated when nutrients are adequate and cells engage in metabolic activities in favor of anabolism. There are several potential reasons why the mTOR pathway is activated in *rd1* photoreceptors. First, mTOR activation may occur due to the increased level of calcium. Notably, the *Pde6b* mutation causes an influx of calcium ions in *rd1* photoreceptors, and it has been reported that high levels of calcium parallel mTOR signaling (Tsang et al., 2014). Second, the outer segments in the *rd1* photoreceptors are underdeveloped and much shorter than normal. The outer segments of rod photoreceptors are comprised of hundreds of membranous discs composed of lipids and proteins required for photoreceptors to function. Shorter outer segments mean that the cells save considerable material, suggesting an abundance of nutrients available for cell utilization, which is sufficient to activate the mTOR signaling pathway.

The mTOR pathway negatively regulates autophagy. Autophagy is a mechanism used by cells to recycle intracellular components for the synthesis of macromolecules. In *rd1* photoreceptors, autophagy is inhibited in conjunction with active mTOR. This implies the presence of an ample supply of nutrients in the *rd1* photoreceptors. However, inhibition of autophagy in the *rd1* photoreceptors leads to an accumulation of damaged organelles and macromolecules within the cells, which may partially contribute to photoreceptor death. The evidence presented in this study shows that inhibition of mTOR signaling by rapamycin and Torin 1 activates the autophagy pathway in the retina. In turn, activated autophagy may protect the photoreceptors by removing damaged macromolecules and relieving energy stress. Moreover, proper regulation of autophagy by mTOR is also important for the health of retinal ganglion cell loss (Madrakhimov et al., 2021). Thus, the rescue of photoreceptors by rapamycin or Torin 1 is possibly mediated by autophagy activation. This finding is supported by previous research, which reported inhibition of FAS-induced photoreceptor apoptosis by autophagy activation (Besirli et al., 2011).

Overactivation of mTOR is also cytotoxic to other cells in the retina. For example, conditional knockout of *Tsc1*, a negative regulator of the mTORC1 pathway, in retinal pigment epithelial cells causes hyperactivation of mTORC1, leading to cell degeneration (Go et al., 2020; Huang et al., 2019). Intriguingly, however, an earlier study suggested that conditional knockout of *Tsc1* in the *Pde6b* mutant retina slows retinal degeneration progression (Zhang et al., 2016). The protective effects of TSC1 deficiency are presumably mediated by activation of the mTOR signaling pathway. Another study also showed that overexpression of S6K, a

downstream component of the mTOR signaling pathway, promotes the survival of both rod and cone photoreceptors (Lin et al., 2018). These results differ from our findings. One possible interpretation for this discrepancy is that the mTOR pathway assumes multiple roles in photoreceptors. A previous report showed that *Tsc1* is involved in regulating cell cycle progression during retinal development (Choi et al., 2018). Conditional knockout of *Tsc1* inhibits the progress of retinal progenitor cells, thus retarding retinal development (Choi et al., 2018). This may also slow the degenerative process through a different mechanism.

In summary, we showed that the mTOR pathway is activated in *rd1* photoreceptors. Treatment of *rd1* mice using rapamycin effectively inhibits mTOR activation and suppresses mTOR expression, leading to slower photoreceptor degeneration. Thus, rapamycin is a potential therapeutic drug for treating retinal degeneration caused by defective PDE6 function.

SUPPLEMENTARY DATA

Supplementary data to this article can be found online.

COMPETING INTERESTS

The authors declare that they have no competing interests.

AUTHORS' CONTRIBUTIONS

J.L.Y., T.D.Z., and F.Y. performed the experiments and analyzed the data. Z.L.Y. and H.B.Z. analyzed the data and supervised the project. H.B.Z. conceived the project, designed the experiments, and wrote the manuscript. All authors read and approved the final version of the manuscript.

Jia-Liang Yang¹, Tong-Dan Zou¹, Fang Yang¹, Zheng-Lin Yang^{1,2,3,*}, Hou-Bin Zhang^{1,3,*}

¹ Key Laboratory for Human Disease Gene Study of Sichuan Province and Institute of Laboratory Medicine, Sichuan Provincial People's Hospital, University of Electronic Science and Technology of China, Chengdu, Sichuan 610072, China

² Institute of Chengdu Biology, Sichuan Translational Medicine Hospital, Chinese Academy of Sciences, Chengdu, Sichuan 610072, China

³ Research Unit for Blindness Prevention of Chinese Academy of Medical Sciences (2019RU026), Sichuan Academy of Medical Sciences & Sichuan Provincial People's Hospital, Chengdu, Sichuan 610072, China

*Corresponding author, E-mail: houbin_zhang@yahoo.com

REFERENCES

- Arshavsky VY, Lamb TD, Pugh Jr EN. 2002. G proteins and phototransduction. *Annual Review of Physiology*, **64**: 153–187.
- Beretta L, Gingras AC, Svitkin YV, Hall MN, Sonenberg N. 1996. Rapamycin blocks the phosphorylation of 4E-BP1 and inhibits cap-dependent initiation of translation. *The EMBO Journal*, **15**(3): 658–664.
- Besirli CG, Chinskey ND, Zheng QD, Zacks DN. 2011. Autophagy activation in the injured photoreceptor inhibits fas-mediated apoptosis. *Investigative*

- Ophthalmology & Visual Science*, **52**(7): 4193–4199.
- Choi JH, Jo HS, Lim S, Kim HT, Lee KW, Moon KH, et al. 2018. mTORC1 accelerates retinal development via the immunoproteasome. *Nature Communications*, **9**(1): 2502.
- Chung J, Kuo CJ, Crabtree GR, Blenis J. 1992. Rapamycin-FKBP specifically blocks growth-dependent activation of and signaling by the 70 kd S6 protein kinases. *Cell*, **69**(7): 1227–1236.
- Collin GB, Gogna N, Chang B, Damkham N, Pinkney J, Hyde LF, et al. 2020. Mouse models of inherited retinal degeneration with photoreceptor cell loss. *Cells*, **9**(4): 931.
- Dias MF, Joo K, Kemp JA, Fialho SL, Da Silva Cunha Jr A, Woo SJ, et al. 2018. Molecular genetics and emerging therapies for retinitis pigmentosa: basic research and clinical perspectives. *Progress in Retinal and Eye Research*, **63**: 107–131.
- Dicarlo JE, Mahajan VB, Tsang SH. 2018. Gene therapy and genome surgery in the retina. *The Journal of Clinical Investigation*, **128**(6): 2177–2188.
- Doshi M, Voaden MJ, Arden GB. 1985. Cyclic GMP in the retinas of normal mice and those heterozygous for early-onset photoreceptor dystrophy. *Experimental Eye Research*, **41**(1): 61–65.
- Douros J, Suffness M. 1981. New antitumor substances of natural origin. *Cancer Treatment Reviews*, **8**(1): 63–87.
- Dubouloz F, Deloche O, Wanke V, Cameroni E, De Virgilio C. 2005. The TOR and EGO protein complexes orchestrate microautophagy in yeast. *Molecular Cell*, **19**(1): 15–26.
- Düvel K, Yecies JL, Menon S, Raman P, Lipovsky AI, Souza AL, et al. 2010. Activation of a metabolic gene regulatory network downstream of mTOR complex 1. *Molecular Cell*, **39**(2): 171–183.
- Farber DB. 1995. From mice to men: the cyclic GMP phosphodiesterase gene in vision and disease. *The Proctor Lecture. Investigative Ophthalmology & Visual Science*, **36**(2): 263–275.
- Ferrendelli JA, Cohen AI. 1976. The effects of light and dark adaptation on the levels of cyclic nucleotides in retinas of mice heterozygous for a gene for photoreceptor dystrophy. *Biochemical and Biophysical Research Communications*, **73**(2): 421–427.
- Gillespie PG, Beavo JA. 1989. cGMP is tightly bound to bovine retinal rod phosphodiesterase. *Proceedings of the National Academy of Sciences of the United States of America*, **86**(11): 4311–4315.
- Go YM, Zhang J, Fernandes J, Litwin C, Chen R, Wensel TG, et al. 2020. MTOR-initiated metabolic switch and degeneration in the retinal pigment epithelium. *FASEB Journal*, **34**(9): 12502–12520.
- Hara K, Maruki Y, Long XM, Yoshino KI, Oshiro N, Hidayat S, et al. 2002. Raptor, a binding partner of target of rapamycin (TOR), mediates TOR action. *Cell*, **110**(2): 177–189.
- Hartong DT, Berson EL, Dryja TP. 2006. Retinitis pigmentosa. *The Lancet*, **368**(9549): 1795–1809.
- Hippalgaonkar K, Majumdar S, Kansara V. 2010. Injectable lipid emulsions—advancements, opportunities and challenges. *AAPS PharmSciTech*, **11**(4): 1526–1540.
- Huang JC, Gu S, Chen M, Zhang SJ, Jiang ZC, Chen X, et al. 2019. Abnormal mTORC1 signaling leads to retinal pigment epithelium degeneration. *Theranostics*, **9**(4): 1170–1180.
- Jacinto E, Loewith R, Schmidt A, Lin S, Rüeegg MA, Hall A, et al. 2004. Mammalian TOR complex 2 controls the actin cytoskeleton and is rapamycin insensitive. *Nature Cell Biology*, **6**(11): 1122–1128.
- Keeler C. 1966. Retinal degeneration in the mouse is rodless retina. *Journal of Heredity*, **57**(2): 47–50.
- Keeler CE. 1924. The inheritance of a retinal abnormality in white mice. *Proceedings of the National Academy of Sciences of the United States of America*, **10**(7): 329–333.
- Kim DH, Sarbassov DD, Ali SM, King JE, Latek RR, Erdjument-Bromage H, et al. 2002. mTOR interacts with raptor to form a nutrient-sensitive complex that signals to the cell growth machinery. *Cell*, **110**(2): 163–175.
- Li RJ, Xu J, Fu CL, Zhang J, Zheng YG, Jia H, et al. 2016. Regulation of mTORC1 by lysosomal calcium and calmodulin. *eLife*, **5**: e19360.
- Lin B, Xiong GY, Yang W. 2018. Ribosomal protein S6 kinase 1 promotes the survival of photoreceptors in retinitis pigmentosa. *Cell Death and Disease*, **9**(12): 1141.
- Loewith R, Jacinto E, Wullschlegel S, Lorberg A, Crespo JL, Bonenfant D, et al. 2002. Two TOR complexes, only one of which is rapamycin sensitive, have distinct roles in cell growth control. *Molecular Cell*, **10**(3): 457–468.
- Madrakhimov SB, Yang JY, Kim JH, Han JW, Park TK. 2021. mTOR-dependent dysregulation of autophagy contributes to the retinal ganglion cell loss in streptozotocin-induced diabetic retinopathy. *Cell Communication and Signaling*, **19**(1): 29.
- Majumder PK, Febbo PG, Bikoff R, Berger R, Xue Q, McMahon LM, et al. 2004. mTOR inhibition reverses Akt-dependent prostate intraepithelial neoplasia through regulation of apoptotic and HIF-1-dependent pathways. *Nature Medicine*, **10**(6): 594–601.
- Pittler SJ, Baehr W. 1991. Identification of a nonsense mutation in the rod photoreceptor cGMP phosphodiesterase beta-subunit gene of the rd mouse. *Proceedings of the National Academy of Sciences of the United States of America*, **88**(19): 8322–8326.
- Pittler SJ, Keeler CE, Sidman RL, Baehr W. 1993. PCR analysis of DNA from 70-year-old sections of rodless retina demonstrates identity with the mouse rd defect. *Proceedings of the National Academy of Sciences of the United States of America*, **90**(20): 9616–9619.
- Reinke A, Anderson S, Mccaffery JM, Yates III J, Aronova S, Chu S, et al. 2004. TOR complex 1 includes a novel component, Tco89p (YPL180w), and cooperates with Ssd1p to maintain cellular integrity in *Saccharomyces cerevisiae*. *Journal of Biological Chemistry*, **279**(15): 14752–14762.
- Rieke F, Baylor DA. 1996. Molecular origin of continuous dark noise in rod photoreceptors. *Biophysical Journal*, **71**(5): 2553–2572.
- Sakaeda T, Hirano K. 1995. O/W lipid emulsions for parenteral drug delivery. II. Effect of composition on pharmacokinetics of incorporated drug. *Journal of Drug Targeting*, **3**(3): 221–230.
- Sarbassov DD, Ali SM, Kim DH, Guertin DA, Latek RR, Erdjument-Bromage H, et al. 2004. Rictor, a novel binding partner of mTOR, defines a rapamycin-insensitive and raptor-independent pathway that regulates the cytoskeleton. *Current Biology*, **14**(14): 1296–1302.
- Sehgal SN, Bansbach CC. 1993. Rapamycin: *in vitro* profile of a new immunosuppressive macrolide. *Annals of the New York Academy of Sciences*, **685**(1): 58–67.
- Tsang SH, Chan L, Tsai YT, Wu WH, Hsu CW, Yang J, et al. 2014. Silencing of tuberin enhances photoreceptor survival and function in a preclinical model of retinitis pigmentosa (an american ophthalmological society thesis). *Transactions of the American Ophthalmological Society*, **112**: 103–115.
- Zhang LJ, Justus S, Xu Y, Pluchenik T, Hsu CW, Yang J, et al. 2016. Reprogramming towards anabolism impedes degeneration in a preclinical model of retinitis pigmentosa. *Human Molecular Genetics*, **25**(19): 4244–4255.