

Original Article

Asian Pacific Journal of Tropical Biomedicine

journal homepage: www.apjtb.org



doi: 10.4103/2221–1691.290869

Impact Factor: 1.90

Chemical characterization, docking studies, anti–arthritic activity and acute oral toxicity of *Convolvulus arvensis* L. leavesUzma Saleem^{1✉}, Shingraf Zaib¹, Sana Khalid¹, Fareeha Anwar², Muhammad Furqan Akhtar², Bashir Ahmad²¹Department of Pharmacology, Faculty of Pharmaceutical Sciences, Government College University Faisalabad, Pakistan²Riphah Institute of Pharmaceutical Sciences, Riphah International University Lahore, Pakistan

ABSTRACT

Objective: To evaluate acute oral toxicity and anti-arthritic activity of the methanolic extract of *Convolvulus arvensis* L. leaves.

Methods: Safety was assessed by acute oral toxicity (OECD 425) study. Anti-arthritic activity was explored by *in vitro* (inhibition of protein denaturation) and *in vivo* (Complete Freund's adjuvant-induced arthritis and carrageenan-induced inflammation) methods. Antioxidant potential was determined by assessing ferric reducing power, DPPH inhibition, and H₂O₂ scavenging assays. Furthermore, molecular docking was done to check interactions between the plant constituents and cyclooxygenases (COX-1 and COX-2). Quercetin, gallic acid, caffeic acid, syringic acid, sinapic acid, and vanillic acid were quantified by HPLC and eight compounds were identified by GC-MS analysis.

Results: No mortality and abnormality in biochemical parameters were observed in the toxicity study. Histological analysis of vital organs also supported these biochemical results. The *in vitro* and *in vivo* studies showed that the methanolic extract of leaves of *Convolvulus arvensis* exhibited dose-dependent anti-arthritic and anti-oxidant potential. Molecular docking showed better interactions of plant compounds with cyclooxygenases as compared to standard ibuprofen.

Conclusions: *Convolvulus arvensis* exhibits strong anti-arthritic activity, justifying the traditional use of the herbal drug.

KEYWORDS: *Convolvulus arvensis*; Arthritis; Phytoconstituents; Molecular docking

1. Introduction

Rheumatoid arthritis (RA) is a chronic, autoimmune and degenerative disorder associated with pain, swelling, and warmth in joints. Joint inflammation, hyperalgesia, and cartilage destruction

are the most common causes of the autoimmune RA[1]. The prevalence of the disease is high among females and depends upon age[2]. The actual pathology of RA is unknown, but it is believed to be a T-cell mediated autoimmune condition[3]. Hyperalgesia associated with the RA is regulated through the prostaglandins and other endogenous mediators[4]. Ayurvedic literature has described the herbal treatment of cancer, pain and different chronic inflammatory conditions like gout, arthritis, etc[5]. Anti-arthritic activities of different plant extracts have been studied. Some of the current studies included anti-arthritic effects of *Fagopyrum cymosum*, *Gentiana kurroo*, *Cuscuta reflexa*, *Acacia auriculiformis*, *Berberis orthobotrys*, *Ephedra Gerardiana* and *Moringa rivae*[6,7].

Convolvulus arvensis (*C. arvensis*) L. is herbaceous evergreen weed and generally found in areas with mild, tropical or Mediterranean atmospheres. It is locally known as 'Leli' and belongs to family Convolvulaceae. The plant can develop 5 cm thick carpets-off the ground and the length of the stem can be up to 2 m. It has been used as food and traditional medicine since the eighteen century[8]. Various activities of aerial parts of *C. arvensis* such as laxative, anti-spasmodic, antiangiogenic, wound healing and treatment of jaundice have been reported[9]. Its decoction is used for the treatment of cough and flu[10]. In addition, *C. arvensis* is used as a diuretic and used to cure skin issues *i.e.* dandruff, furunculosis, and spider bites[11]. Other reported pharmacological effects include antioxidant, cytotoxic, immune-stimulatory, antibacterial

✉To whom correspondence may be addressed. E-mail: uzma95@gmail.com

This is an open access journal, and articles are distributed under the terms of the Creative Commons Attribution-Non Commercial-ShareAlike 4.0 License, which allows others to remix, tweak, and build upon the work non-commercially, as long as appropriate credit is given and the new creations are licensed under the identical terms.

For reprints contact: reprints@medknow.com

©2020 Asian Pacific Journal of Tropical Biomedicine Produced by Wolters Kluwer-Medknow. All rights reserved.

How to cite this article: Saleem U, Zaib S, Khalid S, Anwar F, Akhtar MF, Ahmad B. Chemical characterization, docking studies, anti-arthritic activity and acute oral toxicity of *Convolvulus arvensis* L. leaves. Asian Pac J Trop Biomed 2020; 10(10): 442–451.

Article history: Received 27 December 2019; Revision 11 February 2020; Accepted 28 March 2020; Available online 3 August 2020

and hepatoprotective activities. *C. arvensis* has been extensively employed as a folk medicine for the management of rheumatism, skin disorders, microbial infections, diabetes and constipation and diarrhea[12]. The objective of the present study was to evaluate the anti-arthritis activity and acute oral toxicity of *C. arvensis* along with plant characterization.

2. Materials and methods

2.1. Collection of plant material

The leaves of *C. arvensis* were collected from Bhawana, District Chiniot, Pakistan, in March 2017. The plant was identified and authenticated from the Botany Department, University of Agriculture, Faisalabad. A voucher number 244-2-18 had been assigned for future reference.

2.2. Preparation of extract

The leaves of *C. arvensis* were thoroughly rinsed with tap water to remove any adulteration materials, followed by shade drying, pulverization, and extraction with 80% methanol by triple maceration for 14 d. The crude methanolic extract of the plant leaves obtained was stored in separate amber colored jars at 2-8 °C.

2.3. Physicochemical analysis

The physicochemical properties including moisture contents, total ash, acid insoluble ash, water-insoluble ash, sulphated ash, alcohol soluble extractives, and water-soluble extractives of the powdered leaves were determined according to the standard methods of United States Pharmacopoeia-National Formulary (2003). The powdered material of the plant was examined for total lipids, total proteins, and carbohydrates.

2.4. Phytochemical analysis

The methanolic extract of *C. arvensis* was evaluated for quantification of primary and secondary metabolites such as total proteins, total polyphenols, total flavonoids, total alkaloids and total glycosaponins[13].

2.5. High performance liquid chromatographic (HPLC) analysis

The HPLC analysis was performed for determining flavonoid and phenolic compounds in the plant extract. The sample was run in an HPLC system (Shimadzu, Japan) equipped with UV-vis detector, LC-10AT pump and controlled by CSW 32 Software. A Shim-pack CLC-ODS (C-18) column of dimensions 25 cm × 4.6 mm

and detector SPD-10-AV was used for analysis. The mobile phase consisted of two solutions, i.e., Solution A [H₂O; acetic acid (AA) -94:6, pH =2.27] and B; acetonitrile, which were eluted by gradient elution. The mobile phase was flown at a rate of 1 mL/min. The spectrum was observed at 280 nm using a UV-vis detector[14].

2.6. Fourier transformed infrared (FTIR) spectroscopic analysis

The methanolic extract of *C. arvensis* was subjected to FTIR spectroscopic analysis by potassium bromide (KBr) discs. For this purpose, 1 mg of sample and 100 mg of KBr were mixed together and shifted to a dye to produce the disc. The dye was pressed in a hydraulic press to attain FTIR spectra in IR range 4000-400 cm⁻¹. The spectra attained were analyzed for the identification of functional groups in the plant sample[14].

2.7. Gas chromatography–mass spectroscopy (GC–MS) analysis

The GC-MS analysis of the methanolic extract of *C. arvensis* was performed by using a Perkin Elmer-Clarus-600 instrument. The working of GC was carried out at 70 eV. Helium was used as a carrier gas with a stream rate of 0.7 mL/min. The temperature of the column was set 60 °C for 5 min, increased to 290 °C at 3 °C/min and finally hold for 5 min at 290 °C. Temperatures of the injector and indicators were adjusted to 250 °C and 290 °C, respectively. The injection volume was 1 µL and split proportion was 1:53. A chromatogram showing different peaks was obtained and the names, molecular weight, molecular formulas and structures of the compounds were acquired by comparing with the National Institute of Standards and Technology library[15].

2.8. Molecular docking studies

2.8.1. Structure retrieval

The molecular docking study was performed to assess the residue binding to selected proteins, COX-1 and COX-2. The structure was determined in the Protein Data Bank (PDB) database for the docking study. The X-ray crystal structure of COX-2 in *Mus musculus* (entry 5 COX in the PDB) was used. The protein structure was prepared prior to being used in the docking study. The preparation of protein structure included protonation and force field-based parameterization of atoms followed by energy minimization prior to the docking procedure. For protonation, the protonated 3D algorithm was implemented in MOE (Web link 2) and was selected to protonate the protein structures while the AMBER99 force field was applied for energy minimization[16]. It gave rise to the removal of the water molecule and co-crystallized bound ligand structure. As for COX-1, the crystal structure of *Mus musculus* was not available in PDB, so it was predicted using a structure prediction tool. The protein sequence was retrieved from Uniprot and was pasted in the Phyre2 program for

its 3D crystal structure prediction. The 3D structure was modeled with 100% confidence. It was downloaded and prepared in the same way.

2.8.2. Ligand library preparation

It is imperative to prepare the ligand library prior to performing a docking study. The 2D conformation of ligands was retrieved from the PubChem database followed by the preparation of ligands which includes protonation and energy minimization by selecting the MMFF94x force-field.

2.8.3. Molecular docking

The potential binding sites of COX-1 and COX-2 proteins were selected through the MOE site finder tool. MOE Dock tool was used to dock ligands within the defined docking sites of COX-1 and COX-2 proteins. Triangular matcher algorithm was selected as a default ligand placement method to find 1000 best poses of docked molecules[17]. Rescoring of poses was done *via* London dG scoring function and the top ten ranked best poses per ligand generated by London dG were further minimized by force field refinement algorithm. All the ligands were ranked based on score, binding affinity, and Root-Mean-Square Deviation (RMSD) values.

2.8.4. Analysis of ligand receptor interaction

In order to have a clear view of receptor ligand interaction of the best-docked complexes, the LigX tool of MOE was used for the generation of 2D plots of receptor ligand interactions. The 2D graph depicts electrostatic interactions, hydrogen bonding, Van der Waals forces and hydrophobic interactions within the active site of the selected protein.

2.9. Animals

Animals for the study were purchased from the Veterinary Research Institute, Lahore, Pakistan. Albino rats of both sexes weighing >150 g and female mice weighing > 25 g were selected for the present study. Animals were kept in polypropylene cages (5 animals per cage), under standard laboratory conditions [temperature (23 ± 2) °C, humidity 60%, 12 h light, and dark cycle]. All the animals were acclimatized for two weeks before experimentation with free access to food and water.

2.10. Ethical approval for animal studies

The experimental study was performed after getting approval from the Institutional Review Board (Reference No. GCUF/ERC/1981) ruled under the regulation of the Institute of Laboratory Animal Resources, Commission on Life Sciences University, National Research Council (1996).

2.11. Acute oral toxicity study

Ten healthy adult female rats (150-200 g) were used for acute oral

toxicity testing as per the Organization for Economic Co-operation and Development guidelines 2001 (AOT-425). By using five rats in each group (one control and one treatment group), a limit test (2000 mg/kg) was performed. After dosing, the animals were noticed up to 14 d for any marked changes. On 15th day, blood samples were collected by cardiac puncture under anesthesia for hematological and biochemical (liver function tests, renal function tests, lipid profile) analyses. Then, all the rats were killed by painless method and vital organs (liver, heart and kidney) were removed and preserved in 10% formalin for histopathological analysis[18].

2.12. In vitro anti-arthritis studies

2.12.1. Effect on bovine serum albumin (BSA)

An aqueous solution of BSA (5% W/V) and different solutions of standard drug and the methanolic extract of *C. arvensis* were prepared at concentrations of 100, 200, 400 and 800 µg/mL as previously described[19]. The test solutions (0.5 mL) contained 0.45 mL of BSA and 0.05 mL of solutions of the methanolic extract of *C. arvensis*. Control solution (0.5 mL) contained 0.45 mL of BSA and 0.05 mL of distilled water. Product control solution (0.5 mL) contained 0.45 mL of distilled water and 0.05 mL of test solution. Standard solution (0.5 mL) contained 0.45 mL of BSA and 0.05 mL of ibuprofen at different concentrations. All the above samples were adjusted to pH 6.3 with 1 mol/L HCl and subjected to incubation at 37 °C for 20 min. After incubation, each mixture was heated up to 57 °C for 30 min. Then phosphate buffer (2.5 mL) was added and absorbance was measured at 660 nm. The percentage inhibition of protein denaturation was calculated by using the following formula; Inhibition percentage=(Absorbance test solution–Absorbance product control)/Absorbance test control×100

2.12.2. Effect on egg albumin protein denaturation

A previously reported method was followed with slight modifications[7]. Briefly, test control solution (5 mL) contained 0.2 mL of egg albumin, 2.8 mL of phosphate buffer and 2 mL of the methanolic extract of *C. arvensis* solutions while standard solution contained ibuprofen at concentrations of 100, 200, 400 and 800 µg/mL. The control solution contained double distilled water. All samples were incubated at (37±2) °C followed by heating for 5 min at 70 °C. Absorbance was determined at 660 nm. The inhibition percentage of egg albumin denaturation was measured by the following formula; Inhibition percentage=(Absorbance control–Absorbance sample)/Absorbance control×100

2.13. In vivo anti-arthritis studies

2.13.1. Complete Freund's adjuvant (CFA) induced arthritis in rats

All the animals (except rats in negative control) were first anesthetized with ether and arthritis was induced by injecting 0.1

mL of CFA into hind paw following a standard protocol[20]. Animals were randomly divided into six groups ($n=5$) and retained in separate cages. The dose of the methanolic extract of *C. arvensis* was prepared in 2% w/v Tween 80. Group 1 (arthritic control) received CFA. Group 2 (negative control) received neither CFA nor any treatment. Group 3 received CFA and ibuprofen at a dose of 80 mg/kg. Groups 4, 5 and 6 received CFA and the methanolic extract of *C. arvensis* at doses of 100, 200 and 400 mg/kg/day, respectively.

All the treatments were administered orally 30 min before CFA administration and then the treatments were continued for 19 d. Paw edema was measured on alternate days by a digital vernier caliper and body weight of each group was recorded using a digital balance. On day 20, each animal was anesthetized, and blood was collected by cardiac puncture. The blood was then transferred into an EDTA and non-EDTA tubes. The quantitative rheumatoid factor (RF) was also calculated. For histopathological analysis, hind paws were amputated and preserved in 10% formalin. Decalcification was done and tissue segments were stained with hematoxylin and eosin[21]. Then microscopic evaluation was carried out using binocular microscope. Cartilage destruction, granulation tissue, acute and chronic inflammation were evaluated. The severity was assessed using the scoring system *i.e.* 0-1: occasional cells were seen; 1, 2 and 3 showed severity.

2.13.2. Carrageenan induced inflammation model

Acute inflammation was induced by sub-plantar administration of 0.1 mL of 1% w/v carrageenan in normal saline into the hind paw. Thirty mice were allocated into 6 groups ($n=5$). The experimental dose was prepared in 2% Tween 80. Group 1 (carrageenan control) received carrageenan injection. Group 2 (negative control) received neither carrageenan injection nor treatment. Group 3 received carrageenan and ibuprofen at a dose of 80 mg/kg. Group 4, 5 and 6 received carrageenan and the methanolic extract of *C. arvensis* at doses of 100, 200 and 400 mg/kg, respectively. All treatments were given orally 1 h before carrageenan injection. Paw edema was measured hourly for 4 h by a digital Vernier caliper[22].

2.14. Antioxidant activity

2.14.1. Ferric reducing power

The reductive activity of the methanolic extract of *C. arvensis* was determined by direct electron donation in the reduction of potassium ferricyanide. The reaction mixture included 1 mL of the extract, 2.5 mL of phosphate buffer (0.2 M with pH 6.6) and 2.5 mL of potassium ferricyanide (1% w/v). The solution without plant extract was used as the control. The mixture was subjected to incubation at 50°C for 20 min. By the addition of 2.5 mL 1% w/v trichloroacetic acid in each solution, the reaction was stopped. Afterward, centrifugation was done at 3000 rpm for 10 min. The 2.5 mL of the supernatant upper layer was mixed with 2.5 mL of distilled water and 0.5 mL of ferric chloride (0.1% w/v) and the absorbance was

measured at 700 nm. Increased absorbance of the reaction mixture showed the larger reductive potential of the sample[23].

2.14.2. DPPH scavenging activity

The DPPH scavenging capacity was evaluated using previously reported method[7]. One mL of 0.004% DPPH in methanol solution (freshly prepared) was added to 3 mL of plant extracts at different concentrations and mixture solutions were kept for 30 min in dark. Then absorbance was observed at 517 nm. A low absorbance of the reaction mixture showed high radical scavenging activity. The antioxidant activity of ascorbic acid was also determined. The solution without the extract of the plant was used as the control. All the experiments were done in triplicate.

DPPH inhibition % = $(\text{Absorbance of blank} - \text{Absorbance of sample}) / \text{Absorbance of blank} \times 100$

2.14.3. Hydrogen peroxide scavenging capacity

Hydrogen peroxide scavenging capacity was measured using previously reported method[7]. A solution of hydrogen peroxide (40 mM) was made in phosphate buffer (pH 7.4). Extracts (100 µg/mL) in distilled water were added to a hydrogen peroxide solution (0.6 mL, 40 mM). The absorbance of hydrogen peroxide at 230 nm was calculated 10 min later against a blank solution containing the phosphate buffer without hydrogen peroxide.

% scavenging capacity = $(\text{Absorbance of control} - \text{Absorbance of sample}) / \text{Absorbance of control} \times 100$

2.15. Statistical analysis

The results were expressed as mean \pm SEM and statistical analysis was conducted by two-way ANOVA for *in vivo* and one-way ANOVA for *in vitro* studies followed by Bonferroni *post hoc* test utilizing Graph Pad Prism 5.0 and $P < 0.05$ was considered significant.

3. Results

3.1. Physicochemical and phytochemical analyses of *C. arvensis*

Physicochemical investigation showed that leaves of *C. arvensis* had different moisture and ash contents (total ash, water-insoluble ash, acid insoluble ash, sulphated ash). The water-soluble extractives were found higher in contrast to alcohol soluble extractives. A significant amount of lipid, protein and carbohydrate contents was quantified in leaves (Table 1). Total protein, glycosaponins, polyphenolic, flavonoid and alkaloid contents (64%, 20%, 52.4%, 6.5%, and 7.8%, respectively) were determined in the plant extract.

Table 1. Physicochemical and phytochemical analysis of powdered material and extract of *Convolvulus arvensis* leaves.

Parameters	% content
Moisture contents (Leaves)	8
Total ash contents (Leaves)	5.75
Water-insoluble ash (Leaves)	27.29
Acid insoluble ash (Leaves)	9.5
Sulphated ash (Leaves)	25
Water soluble extractives (Leaves)	6.4
Alcohol soluble extractives (Leaves)	3.4
Total polyphenolics (Ca.Lme)	52.4
Total lipids contents (Leaves)	2.3
Total protein contents (leaves)	13.8
Carbohydrate contents (Leaves)	72.05
Total proteins (Ca.Lme)	64
Total glycosaponins (Ca.Lme)	20
Total alkaloids (Ca.Lme)	7.8
Total flavonoids (Ca.Lme)	6.5

Ca.Lme: methanolic extract of *Convolvulus arvensis* leaves.

3.2. HPLC analysis

The HPLC analysis was performed for the determination of compounds present in the methanolic extract of *C. arvensis*. The peaks of all constituents were compared with those of the standards (Supplementary Figure 1A). Table 2 shows the compounds identified along with their retention time, quantity and area. The HPLC analysis identified quercetin, gallic acid, caffeic acid, vanillic acid, syringic acid, and sinapic acid. Vanillic acid and sinapic acid were found in higher amounts as compared to other compounds.

3.3. FTIR spectroscopic analysis

The FTIR spectroscopic analysis was performed on the plant extract. The FTIR spectrum of the plant extract showed the presence of alcoholic (3200 cm^{-1}), methyl (2900 cm^{-1}), methylene (2650 cm^{-1} and 1815 cm^{-1}), carboxylic acid (1700 cm^{-1}) and cyanide (1050 cm^{-1}) functional groups in the extract (Supplementary Figure 1B).

3.4. GC-MS analysis

The chromatogram of the methanolic extract of *C. arvensis* showed eight peaks (Supplementary Figure 1C). The library of compounds was used for comparing the fragmentation of chemicals. The name of compounds, retention time, molecular formula and molecular weight and peak area percentages were summed up in Table 2.

3.5. Molecular docking

Table 3 shows the residues involved in the interaction of COX-1 with the chemical constituents identified in the methanolic extract of *C. arvensis*. The chemical constituents including quercetin, gallic acid, caffeic acid, vanillic acid, syringic acid, and sinapic acid showed -13.989 , -9.120 , -10.218 , -9.232 , -14.579 and -10.798 interaction scores, respectively, while ibuprofen showed -10.112 score. The residues involved in the interaction of COX-2 with the chemical constituents identified in the methanolic extract of *C.*

Table 2. Phytochemicals detected in methanolic extract of *Convolvulus arvensis* by HPLC and GC-MS analysis.

Technique	Peak No.	Phytochemical	Retention time	Area (%)	Quantity (ppm)/Molecular weight (for GC-MS)
HPLC analysis	3	Quercetin	2.82	0.6	0.66
	5	Gallic acid	4.97	1.3	1.01
	9	Caffeic acid	12.80	3.3	3.28
	10	Vanillic acid	13.65	5.6	7.68
	12	Syringic acid	16.92	9.0	4.92
	14	Sinapic acid	25.81	17.9	5.12
GC-MS analysis	1	1,2-Ethanedithiol ($\text{C}_2\text{H}_6\text{S}_2$)	3.31	6.95	94.00
	2	1,3,5-Triazine-2,4,6-(1H,3H,5H)-trion ($\text{C}_{33}\text{H}_{42}\text{N}_6\text{O}_3$)	4.27	3.49	570.00
	3	Ethyl benzene (C_8H_{10})	4.42	11.54	106.00
	4	1,6-Heptadiyne (C_7H_8)	4.81	4.73	92.00
	5	Isopropyl caprate ($\text{C}_{13}\text{H}_{26}\text{O}_2$)	14.62	4.13	214.34
	6	Butanedioic acid ($\text{C}_{28}\text{H}_{62}\text{O}_6\text{Si}_4$)	15.37	3.33	606.00
	7	7-Nonenoic acid, Methyl ester ($\text{C}_{10}\text{H}_{18}\text{O}_2$)	16.58	6.65	170.25
	8	Dioctyl phthalate ($\text{C}_{24}\text{H}_{38}\text{O}_4$)	19.19	59.19	390.00

Table 3. Molecular docking of ligand with COX-1 and COX-2.

Ligand name	COX-1			COX-2		
	Residues involved in interaction	Score	RMSD	Residues involved in interaction	Score	RMSD
Ibuprofen	Trp 389	-10.112	0.541	Lys 83	-9.190	2.286
Quercetin	CYS43, GLU487	-13.989	1.183	TYR 555, TYR 448	-12.371	0.884
Gallic acid	CYS43	-9.120	1.732	CYS47	-11.715	1.214
Caffeic acid	GLU467, CYS49	-10.218	1.338	ARG44	-10.172	0.202
Vanillic acid	GLU467, ARG471	-9.232	2.188	ASN43, LYS468	-8.692	2.234
Syringic acid	CYS49, GLN463	-14.579	1.316	GLU 46	-13.907	2.007
Sinapic acid	ARG47	-10.798	2.667	ASB39, ARG44	-10.886	1.798

RMSD: Root-Mean-Square Deviation. Cyclooxygenase-1 and -2: COX-1 and COX-2.

arvensis are also demonstrated in Table 3. The chemical constituents including quercetin, gallic acid, caffeic acid, vanillic acid, syringic acid, and sinapic acid showed -12.371 , -11.715 , -10.172 , -8.692 , -13.907 , and -10.886 interaction scores, respectively, while ibuprofen showed -9.190 interaction score. The highest score of interaction with COX-1 and COX-2 was found in syringic acid when compared with standard ibuprofen. The interactions between ligand, and COX-1 and COX-2 enzymes are shown in Supplementary

Figures 2 and 3.

3.6. Acute oral toxicity study

Administration of the methanolic extract of *C. arvensis* at 2000 mg/kg did not cause any abnormalities and mortalities. The experimental animals were observed with special consideration throughout the time period (14 d). It was revealed that the bodyweight of rats treated

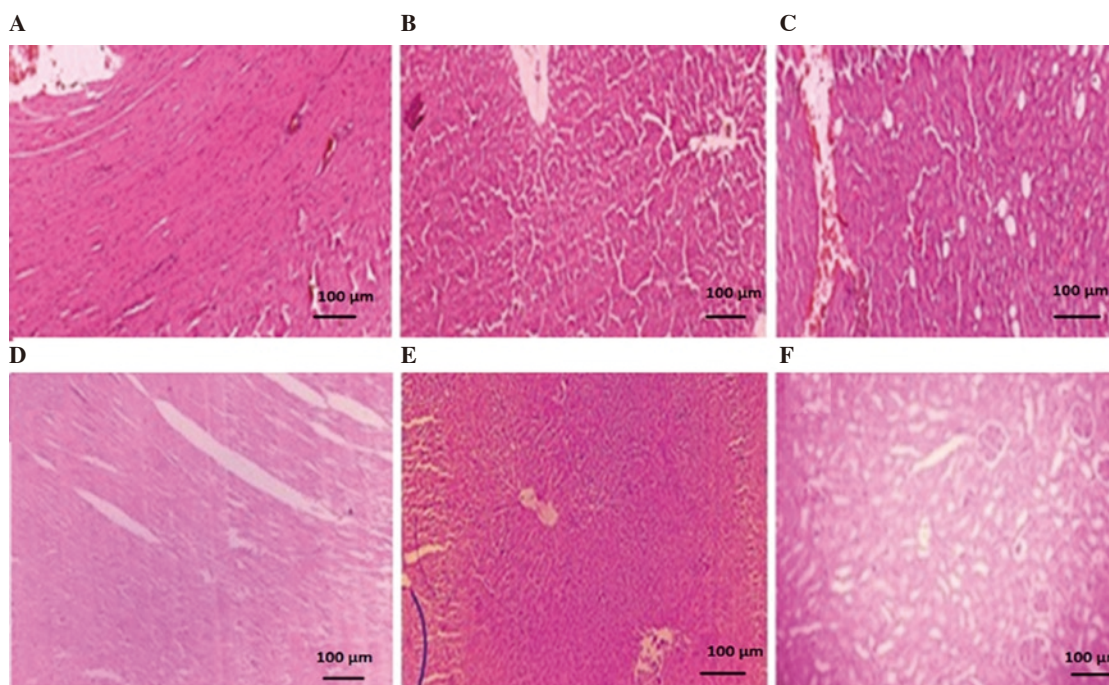


Figure 1. Morphological representation of heart, liver and kidney sections of control (A, B, C) and *Convolvulus arvensis* extract treated (D, E, F) animals, respectively. All the images were captured at 10 \times .

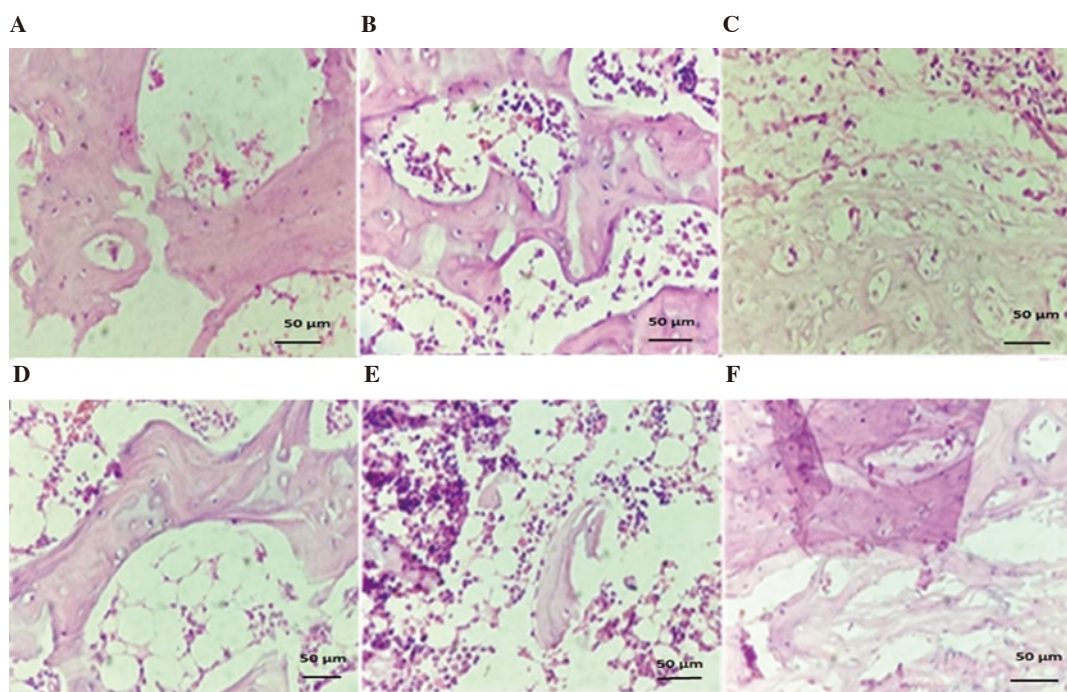


Figure 2. Histological presentation of ankle joints in *Convolvulus arvensis* treated polyarthritic animals. (A) negative control (B) arthritic control (C) ibuprofen treated group (80 mg/kg) (D) *Convolvulus arvensis* treated group (100 mg/kg) (E) *Convolvulus arvensis* treated group (200 mg/kg) (F) *Convolvulus arvensis* treated group (400 mg/kg). All the images were captured at 40 \times .

with the vehicle [(193.20 ± 1.15) g] and 2000 mg/kg methanolic extract of *C. arvensis* [(194.80 ± 0.58) g] did not vary significantly as compared to their corresponding body weights [(196.80 ± 1.06) g and (200.20 ± 1.03) g, respectively] after 14 d. The results showed that the acute administration of the methanolic extract of *C. arvensis* had no significant impact on the bodyweight of treated rats.

Acute toxicity study also showed that the administration of 2000 mg/kg methanolic extract of *C. arvensis* had an insignificant effect on the weight of vital organs. The weights of heart, kidney, and liver in the control group [(0.65 ± 0.02) g, (1.71 ± 0.02) g and (6.36 ± 0.01) g, respectively] were similar to those of the group treated with the methanolic extract of *C. arvensis* [(0.66 ± 0.01) g, (1.75 ± 0.01) g and (6.58 ± 0.11) g, respectively].

The hematological profile of rats showed no significant variation in hematocrit and mean corpuscular hemoglobin with significant alteration in neutrophils, eosinophils, and lymphocytes. Levels of hemoglobin, total leucocyte count, red blood cells, mean corpuscular volume, mean corpuscular hemoglobin concentration and platelets of treated rats varied more significantly ($P < 0.001$) as compared with the control group (Supplementary Table 1).

There were also significant ($P < 0.001$) variations in biochemical indicators of liver function test. Levels of alanine aminotransferase, aspartate aminotransferase, and alkaline phosphatase were significantly decreased in the treatment group as compared to the vehicle control group. No significant changes were seen in total bilirubin. Blood urea and the serum creatinine levels were higher in the vehicle control group as compared with the plant extract. It was observed that there was a significant alteration in cholesterol, triglycerides and high-density lipoprotein cholesterol levels in comparison to the control group. However, rats showed no marked changes in low and very low-density cholesterol as compared to the control group (Supplementary Table 1). Histopathological analysis of heart, liver and kidney sections of extract-treated group exhibited no marked difference as compared with the vehicle control group (Figure 1).

3.7. Effect of the methanolic extract of *C. arvensis* on BSA protein and egg albumin denaturation

The present study showed BSA protein denaturation inhibition in a concentration-dependent manner. At higher concentrations, more pronounced effects were noticed. The methanolic extract of *C. arvensis* showed 93.11% inhibition while standard ibuprofen exhibited 90.81% inhibition at 800 µg/mL (Table 4).

The present study also showed egg albumin denaturation inhibition in a concentration-dependent manner. At higher concentrations, more noticeable effects were seen. Ibuprofen and the methanolic extract of *C. arvensis* both showed 88.88% inhibition at 800 µg/mL (Table 4).

Table 4. Effect of *Convolvulus arvensis* leaf extract against protein denaturation using bovine serum and egg albumin.

Sample (µg/mL)	BSA inhibition assay (%)	Egg albumin denaturation inhibition (%)
Ibuprofen		
100	75.87	72.22
200	82.76	78.88
400	86.21	81.11
800	90.81	88.88
Plant extract		
100	79.31	78.88
200	86.21	81.11
400	89.66	86.66
800	93.11	88.88

3.8. Activity against CFA-induced arthritis

There was a significant ($P < 0.001$) decrease in paw diameter in extract-treated rats as compared with the arthritic group. The methanolic extract of *C. arvensis* at doses of 100 mg/kg, 200 mg/kg and 400 mg/kg and ibuprofen at 80 mg/kg showed pronounced inhibition of edematous paw *i.e.* 70.74%, 72.67%, 78.04% and 75.90%, respectively on 19th day (Table 5). The arthritic group showed marked alteration in hematological parameters while the plant extract and ibuprofen significantly improved ($P < 0.001$) these alterations (Supplementary Table 2). The RF, erythrocyte sedimentation rate and white blood cells were decreased as compared to the CFA control group. A significant weight gain ($P < 0.001$) was found in groups treated with extract and ibuprofen as compared to arthritic group (Supplementary Table 3). Figure 2 exhibited histopathological examination of the ankle joint and showed that ankle joint of normal control presented intact synovium, no inflammation of the synovial lining and no cells of inflammation. The scoring of histopathology revealed that there was more protection in extract-treated (400 mg/kg) rats as compared to rats of the arthritic group by decreasing acute and chronic inflammation along with the decreased cartilage destruction (Supplementary Table 4). Figure 2 also showed a morphological representation of paw after the sub-plantar administration of CFA.

3.9. Effect on carrageenan-induced paw edema

The methanolic extract of *C. arvensis* showed a significant decrease in paw inflammation. The plant extract at 100 mg/kg, 200 mg/kg, 400 mg/kg and standard drug at 80 mg/kg showed 48.10%, 55.44%, 61.26% and 49.87% inhibition, respectively as shown in Table 6.

3.10. Antioxidant activity

The antioxidant activity was measured by performing DPPH, Ferric reducing power and hydrogen peroxide scavenging assays, and the plant extract showed varying DPPH and H₂O₂ scavenging and reducing power capabilities when compared with the standard

Table 5. Effect of *Convolvulus arvensis* extract on paw diameter in CFA induced arthritis rats.

Treatments	Day 1	Day 5	Day 9	Day 15	Day 19
Arthritic control	7.73 ± 0.23	11.98 ± 0.33	15.06 ± 0.38	19.70 ± 0.07	22.87 ± 0.01
Negative control	3.64 ± 0.18***	3.75 ± 0.22***	3.31 ± 0.11***	3.43 ± 0.12***	3.50 ± 0.14***
Ibuprofen (80 mg/kg)	5.60 ± 0.18***	7.09 ± 0.08***	7.59 ± 0.13***	6.29 ± 0.01***	5.51 ± 0.01***
Ca.Lme (100 mg/kg)	6.01 ± 0.07***	7.32 ± 0.17***	8.18 ± 0.06***	7.21 ± 0.01***	6.69 ± 0.14***
Ca.Lme (200 mg/kg)	5.80 ± 0.09***	7.28 ± 0.18***	7.86 ± 0.08***	6.89 ± 0.01***	6.25 ± 0.13***
Ca.Lme (400 mg/kg)	5.45 ± 0.19***	6.82 ± 0.19***	6.90 ± 0.18***	5.89 ± 0.05***	5.02 ± 0.01***

Ca.Lme: Methanolic extract of *Convolvulus arvensis* leaves. CFA: Complete Freund’s adjuvant. The statistical analysis was carried out by ANOVA followed by Bonferroni *post hoc* test. *** shows $P < 0.001$ as compared with arthritic control ($n=5$, Mean ± SEM).

Table 6. Effect of *Convolvulus arvensis* on carrageenan induced paw edema in mice.

Treatments	Increase in paw diameter (mm)				
	0 h	1 h	2 h	3 h	4 h
Carrageenan control	1.76 ± 0.01	3.71 ± 0.01	3.73 ± 0.01	3.84 ± 0.01	3.95 ± 0.01
Negative control	1.75 ± 0.01	1.74 ± 0.00***	1.75 ± 0.01***	1.74 ± 0.08***	1.77 ± 0.02***
Ibuprofen (80 mg/kg)	1.74 ± 0.02	2.89 ± 0.01***	2.85 ± 0.02***	2.60 ± 0.01***	1.98 ± 0.01***
Ca.Lme (100 mg/kg)	1.75 ± 0.01	3.10 ± 0.01***	3.09 ± 0.02***	2.93 ± 0.02***	2.05 ± 0.01***
Ca.Lme (200 mg/kg)	1.77 ± 0.01	2.77 ± 0.00***	2.17 ± 0.00***	2.09 ± 0.01***	1.76 ± 0.01***
Ca.Lme (400 mg/kg)	1.74 ± 0.01	2.63 ± 0.02***	2.04 ± 0.02***	2.01 ± 0.01***	1.53 ± 0.02***

The statistical analysis was carried out by ANOVA followed by Bonferroni *post hoc* test. *** shows statistically significant ($P < 0.001$) as compared with the carrageenan control.

ascorbic acid. It was found that ascorbic acid showed significantly higher % inhibition of DPPH (78.70%), reducing power (0.923) and H₂O₂ scavenging activity (59.34%) in comparison to the those of the methanolic extract of *C. arvensis* (49.35%, 0.783 and 6.75%).

4. Discussion

RA that is associated with symptoms of swelling of joints, the release of RF (autoantibody) and distortion of bone is a more continuous ailment that presents with major systemic complexities with a high death rate in patients compared with healthy individuals[24]. Herbal plants are being utilized for hundreds of years to treat different sicknesses. *C. arvensis* was reported to decrease inflammation and pain of joints[10]. Preliminary studies are important for the efficient utilization of herbal medicines. The preliminary physicochemical and phytochemical analysis was performed for the standardization of the herbal plant. HPLC was also performed that indicated the presence of quercetin, gallic acid, caffeic acid, vanillic acid, syringic acid, and sinapic acid. It has previously been stated that flavonoid and phenolic contents possess anti-inflammatory properties[25]. Previous studies suggested the anti-inflammatory potential of identified quercetin, gallic acid, caffeic acid, vanillic acid, syringic acid and sinapic acid[26–30]. The FTIR and GC-MS analyses have a fundamental role to ascertain functional groups and bioactive compounds. In the present study, the results of FTIR suggested the presence of different functional groups and GC-MS analysis further showed eight peaks of compounds[31,32]. The acute oral toxicity study is essential to decide the harmless dose range to accomplish the clinical signs and symptoms of drug toxicity[33]. In the present study, no mortality was observed, so it can be considered

that the lethal dose could be above 2 000 mg/kg.

In the present study, the anti-arthritis activity of the methanolic extract of *C. arvensis* was evaluated by *in vitro* and *in vivo* methods. *In vitro* methods included protein denaturation using BSA and egg albumin. *In vivo* methods included two models *i.e.* carrageenan-induced paw edema and CFA model. The main purpose of the present study was to determine the effects of the methanolic extract of *C. arvensis* against arthritic edema and parameters associated with arthritis. Denaturation of proteins is a well-known reason for inflammation[34]. The secondary and tertiary structure of proteins in the cell membranes is lost by extrinsic stress, heat, organic solvents or strong acid and bases[35]. Mechanism of denaturation is associated with changes of electrostatic power, hydrogen, hydrophobic and disulphide bonds. Protein denaturation implies loses of natural properties of protein particles. Subsequently, counteractive action of protein denaturation may likewise help in progress of inflammation[36]. Some literature proposed that the denaturation of proteins was one of the reasons for inflammation of the rheumatoid joint that was linked to the generation of autoantigens in certain rheumatic illnesses[37]. In the present study, it was noticed that the extract and ibuprofen showed significant inhibition of protein denaturation. Thus, the methanolic extract of *C. arvensis* might be useful in preventing the inflammation associated with protein denaturation.

Different models of animals are utilized as a part of the preclinical research in arthritis[37]. The plant extract was examined against the carrageenan model. Carrageenan prompted paw edema has been extensively utilized to screen the anti-inflammatory drugs and plant extracts. Edema produced *via* carrageenan is found to be biphasic. The primary stage (60 min) includes the arrival of serotonin and histamine and the second stage (> 60 min) is intervened by

cyclooxygenase substances. Congruity between the two stages is given by kinin. The methanolic extract of *C. arvensis* fundamentally restrained the edema development in both the primary and second stages. In the present study, the anti-edematous action of the plant persevered in the second stage with the maximal impact found at 4 h. As noted, there was pronounced percentage inhibition of paw edema at the fourth hour. The percentage inhibitions of inflammation by the extract and standard medication ibuprofen were 61.26% and 49.87%, respectively. Therefore, it can be concluded that the inhibitory impact of methanolic extract of *C. arvensis* in carrageenan-incited inflammation might be due to inhibition of COX that hindered the prostaglandin production.

The anti-arthritic action of the plant extract was further confirmed in CFA induced arthritis. The CFA was comprised of inactivated and dried *Mycobacterium* that induced autoimmunity and resulted in the generation of immunoglobulin. The CFA incited joint pain articulated with swelling in the hind paw (primary stage of arthritis) which continued for a week and where the production of prostaglandin happened. Following a couple of days, inflammation in the contralateral and in front paw was noticed (secondary stage of arthritis) along with the presence of arthritic nodules in the ear and tail [38,39].

The methanolic extract of *C. arvensis* displayed significant anti-arthritic through amelioration of altered biomarkers in polyarthritis. A pronounced improvement in hematological and histopathological parameters showed the reduction in polyarthritis associated swelling by the methanolic extract of *C. arvensis*. The results were comparable to the standard anti-inflammatory drug. These findings propose the potential of the methanolic extract of *C. arvensis* for the treatment of clinical diseases like RA.

Molecular docking showed the interaction between ligands and two isoforms of COX *i.e.* COX-1 and COX-2. The plant constituents showed better interaction with the two COX isoforms as compared with ibuprofen. Hence, it can be concluded that these binding sites of the ligand with COX-1 and COX-2 residues could serve as future target sites for the action of drugs. The anti-arthritic potential of the methanolic extract of *C. arvensis* could be ascribed to the presence of steroids, tannins, flavonoids, alkaloids, glycosides, saponins and terpenoids found after fundamental phytochemical analysis. Nonspecific anti-arthritic action was perhaps due to the consolidated impact of the different phytoconstituents present in the methanolic extract of *C. arvensis*.

In conclusion, the study indicated that the methanolic extract of *C. arvensis* (100 mg/kg, 200 mg/kg and 400 mg/kg) shows protective effect against arthritis, which offered a pharmacological justification to the customary utilization of the plant against rheumatoid joint and inflammation.

Conflict of interest statement

The authors declare that there is no conflict of interest.

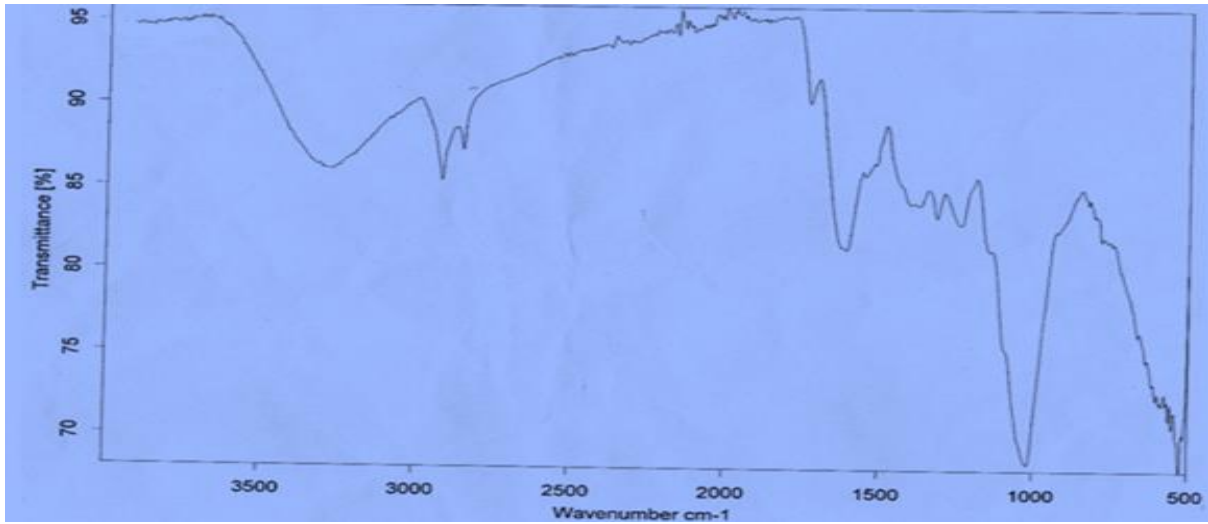
Authors' contributions

US designed the work and drafted the article. SZ and SK did data collection, FA performed data analysis and interpretation, MFA and BA did critical revision of article.

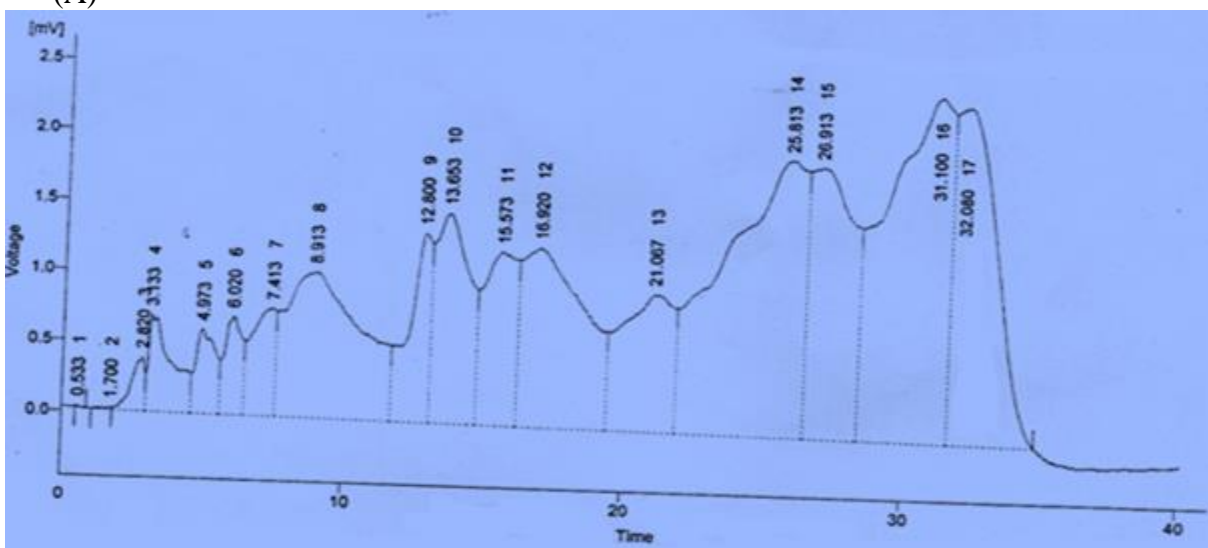
References

- [1] Patil KR, Patil CR, Jadhav RB, Mahajan VK, Patil PR, Gaikwad PS. Anti-arthritic activity of bartogenic acid isolated from fruits of *Barringtonia racemosa* Roxb.(Lecythidaceae). *Evid Based Complement Alternat Med* 2011; **11**(1): 1-7.
- [2] Pandey S. Various techniques for the evaluation of anti arthritic activity in animal models. *J Adv Pharm Technol Res* 2010; **1**(2): 164-173.
- [3] Chen J, Wang Y, Wu H, Yan S, Chang Y, Wei W, et al. A modified compound from paeoniflorin, CP-25, suppressed immune responses and synovium inflammation in collagen-induced arthritis mice. *Front Pharmacol* 2018; **9**(563): 1-12.
- [4] Schaible HG, Ebersberger A, Von Banchet GS. Mechanisms of pain in arthritis. *Ann N Y Acad Sci* 2002; **966**(1): 343-354.
- [5] Akhtar MF, Saleem A, Alamgeer, Saleem M. A comprehensive review on ethnomedicinal, pharmacological and phytochemical basis of anticancer medicinal plants of Pakistan. *Curr Cancer Drug Tar* 2019; **19**(2): 120-151.
- [6] Sumitra S, Nidhi S. Evaluation of *in vitro* anti arthritic activity of *Acacia auriculiformis* A. Cunn. Ex. Benth. stem bark. *World J Pharm Pharm Sci* 2016; **5**(2): 1659-1664.
- [7] Saleem A, Saleem M, Akhtar MF, Shahzad M, Jahan S. *Moringa rivaie* leaf extracts attenuate Complete Freund's adjuvant-induced arthritis in Wistar rats *via* modulation of inflammatory and oxidative stress biomarkers. *Inflammopharmacology* 2020; **28**(1): 139-151.
- [8] Iqbal H, Sher Z, Khan ZU. Medicinal plants from salt range Pind Dadan Khan, district Jhelum, Punjab, Pakistan. *J Med Plant Res* 2011; **5**(11): 2157-2168.
- [9] Austin DF. Bindweed (*Convolvulus arvensis*, Convolvulaceae) in North America, from medicine to menace. *J Torrey Bot Soc* 2000; **127**(2): 172-177.
- [10] Ali M, Qadir MI, Saleem M, Janbaz KH, Gul H, Hussain L, et al. Hepatoprotective potential of *Convolvulus arvensis* against paracetamol-induced hepatotoxicity. *Bangladesh J Pharmacol* 2013; **8**(3): 300-304.
- [11] Leporatti ML, Ivancheva S. Preliminary comparative analysis of medicinal plants used in the traditional medicine of Bulgaria and Italy. *J Ethnopharmacol* 2003; **87**(2): 123-142.
- [12] Ahmed N, Mahmood A, Mahmood A, Tahir SS, Bano A, Malik RN, et al.

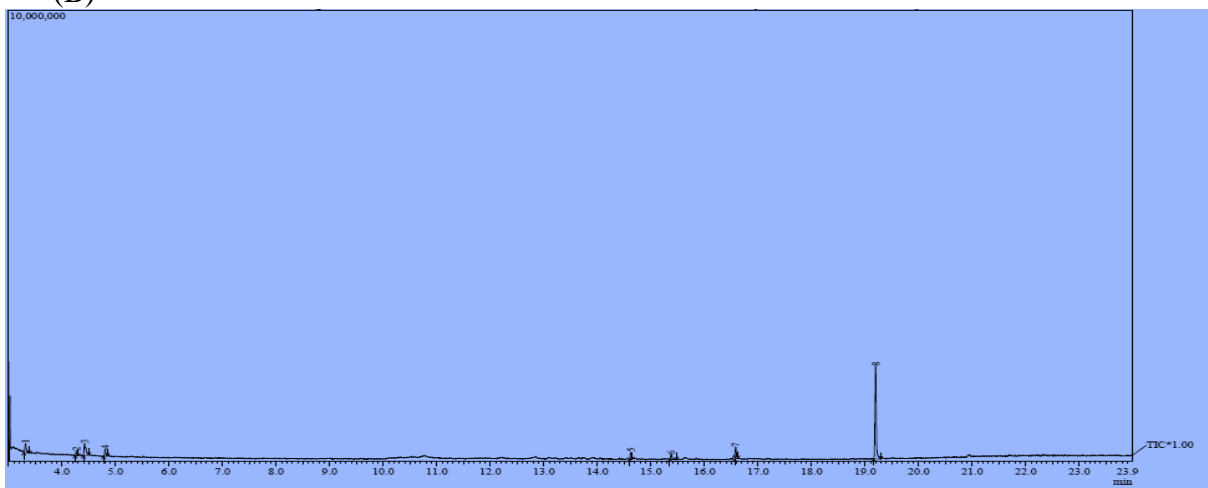
- Relative importance of indigenous medicinal plants from Layyah district, Punjab Province, Pakistan. *J Ethnopharmacol* 2014; **155**(1): 509-523.
- [13] Saleem U, Hussain K, Ahmad M, Irfan Bukhari N, Malik A, Ahmad B. Physicochemical and phytochemical analysis of *Euphorbia helioscopia* (L.). *Pak J Pharm Sci* 2014; **27**(3): 1-9.
- [14] Tokusoglu O, Unal M, Yildirim Z. HPLC-UV and GC-MS characterization of the flavonol aglycons quercetin, kaempferol, and myricetin in tomato pastes and other tomato-based products. *Acta Chromatogr* 2003; **13**(1): 196-207.
- [15] Ayaz M, Junaid M, Ullah F, Sadiq A, Subhan F, Khan MA, et al. Molecularly characterized solvent extracts and saponins from *Polygonum hydropiper* L. show high anti-angiogenic, anti-tumor, brine shrimp, and fibroblast NIH/3T3 cell line cytotoxicity. *Front Pharmacol* 2016; **7**(74): 1-13.
- [16] Labute P. Protonate 3D: Assignment of ionization states and hydrogen coordinates to macromolecular structures. *Proteins* 2009; **75**(1): 187-205.
- [17] Podvinec M, Schwede T, Peitsch MC. Docking for neglected diseases as community efforts. In: Schwede T, Peitsch M (eds.) *Computational structural biology: Methods and applications*. 1st ed. New Jersey: World Scientific; 2008, p. 683-704.
- [18] Sethiya NK, Nahata A, Dixit VK. Anxiolytic activity of *Canscora decussata* in albino rats. *J Complement Integr Med* 2010; **7**(1): 1-12.
- [19] Uttra AM, Hasan UH. Anti-arthritis activity of aqueous-methanolic extract and various fractions of *Berberis orthobotrys* Bien ex Aitch. *BMC Complement Altern Med* 2017; **17**(371): 1-11.
- [20] Mbiancha M, Almas J, Shabana SU, Nida D, Aisha F. Anti-arthritis property of crude extracts of *Piptadeniastrum africanum* (Mimosaceae) in complete Freund's adjuvant-induced arthritis in rats. *BMC Complement Altern Med* 2017; **17**(111): 1-9.
- [21] Akhtar MF, Ashraf M, Javeed A, Anjum AA, Saleem M, Saleem A, et al. Association of textile industry effluent with mutagenicity and its toxic health implications upon acute and sub-chronic exposure. *Environ Monit Assess* 2018; **190**(3): 1-13.
- [22] Sarkhel S. Evaluation of the anti-inflammatory activities of *Quillaja saponaria* Mol. saponin extract in mice. *Toxicol Rep* 2016; **3**: 1-7.
- [23] Arulpriya P, Lalitha P, Hemalatha S. Antimicrobial testing of the extracts of *Samanea saman* (Jacq.) Merr. *Der Pharma Chem* 2010; **2**(6): 73-83.
- [24] McInnes IB, Schett G. The pathogenesis of rheumatoid arthritis. *N Engl J Med* 2011; **365**(23): 2205-2219.
- [25] Ghasemzadeh A, Ghasemzadeh N. Flavonoids and phenolic acids: Role and biochemical activity in plants and human. *J Med Plant Res* 2011; **5**(31): 6697-6703.
- [26] Bischoff SC. Quercetin: Potentials in the prevention and therapy of disease. *Curr Opin Clin Nutr Metab Care* 2008; **11**(6): 733-740.
- [27] Manach C, Scalbert A, Morand C, Remesy C, Jimenez L. Polyphenols: Food sources and bioavailability. *Am J Clin Nutr* 2004; **79**(5): 727-747.
- [28] Prince PSM, Rajakumar S, Dhanasekar K. Protective effects of vanillic acid on electrocardiogram, lipid peroxidation, antioxidants, proinflammatory markers and histopathology in isoproterenol induced cardiotoxic rats. *Eur J Pharmacol* 2011; **668**(12): 233-240.
- [29] Itoh A, Isoda K, Kondoh M, Kawase M, Kobayashi M, Tamesada M, et al. Hepatoprotective effect of syringic acid and vanillic acid on concanavalin a-induced liver injury. *Biol Pharm Bull* 2009; **32**(7): 1215-1219.
- [30] Yun KJ, Koh DJ, Kim SH, Park SJ, Ryu JH, Kim DG, et al. Anti-inflammatory effects of sinapic acid through the suppression of inducible nitric oxide synthase, cyclooxygenase-2, and proinflammatory cytokines expressions via nuclear factor- κ B inactivation. *J Agric Food Chem* 2008; **56**(21): 10265-10272.
- [31] Coates J. Interpretation of infrared spectra, a practical approach. In: Meyers RA, McKelvy ML (eds.) *Encyclopedia of analytical chemistry*. 1st Ed. New Jersey, Wiley online library; 2006, p. 815-837.
- [32] Sermakkani M, Thangapandian V. GC-MS analysis of *Cassia italica* leaf methanol extract. *Asian J Pharm Clin Res* 2012; **5**(2): 90-94.
- [33] Saleem U, Ahmad B, Ahmad M, Erum A, Hussain K, Bukhari NI. Is folklore use of *Euphorbia helioscopia* devoid of toxic effects? *Drug Chem Toxicol* 2016; **39**(2): 233-237.
- [34] Mizushima Y, Kobayashi M. Interaction of anti-inflammatory drugs with serum proteins, especially with some biologically active proteins. *J Pharm Pharmacol* 1968; **20**(3): 169-173.
- [35] Prasad SB, Yashwant, Aeri V. *In vitro* anti-inflammatory activity of Raupya (Silver) Bhasma. *J Chem Pharm Res* 2013; **5**(9): 194-197.
- [36] Sangeetha G, Vidhya R. *In vitro* anti-inflammatory activity of different parts of *Pedaliium murex* (L.). *Inflammation* 2016; **4**(3): 31-36.
- [37] Mehta A, Sethiya NK, Mehta C, Shah G. Anti-arthritis activity of roots of *Hemidesmus indicus* R. Br. (Anantmul) in rats. *Asian Pac J Trop Med* 2012; **5**(2): 130-135.
- [38] Kaithwas G, Majumdar DK. Therapeutic effect of *Linum usitatissimum* (flaxseed/linseed) fixed oil on acute and chronic arthritic models in albino rats. *Inflammopharmacology* 2010; **18**(3): 127-136.
- [39] Lee J, Kim KA, Jeong S, Lee SG, Park HJ, Kim NJ, et al. Anti-inflammatory, anti-nociceptive, and anti-psychiatric effects by the rhizomes of *Alpinia officinarum* on complete Freund's adjuvant-induced arthritis in rats. *J Ethnopharmacol* 2009; **126**(2): 258-264.



(A)

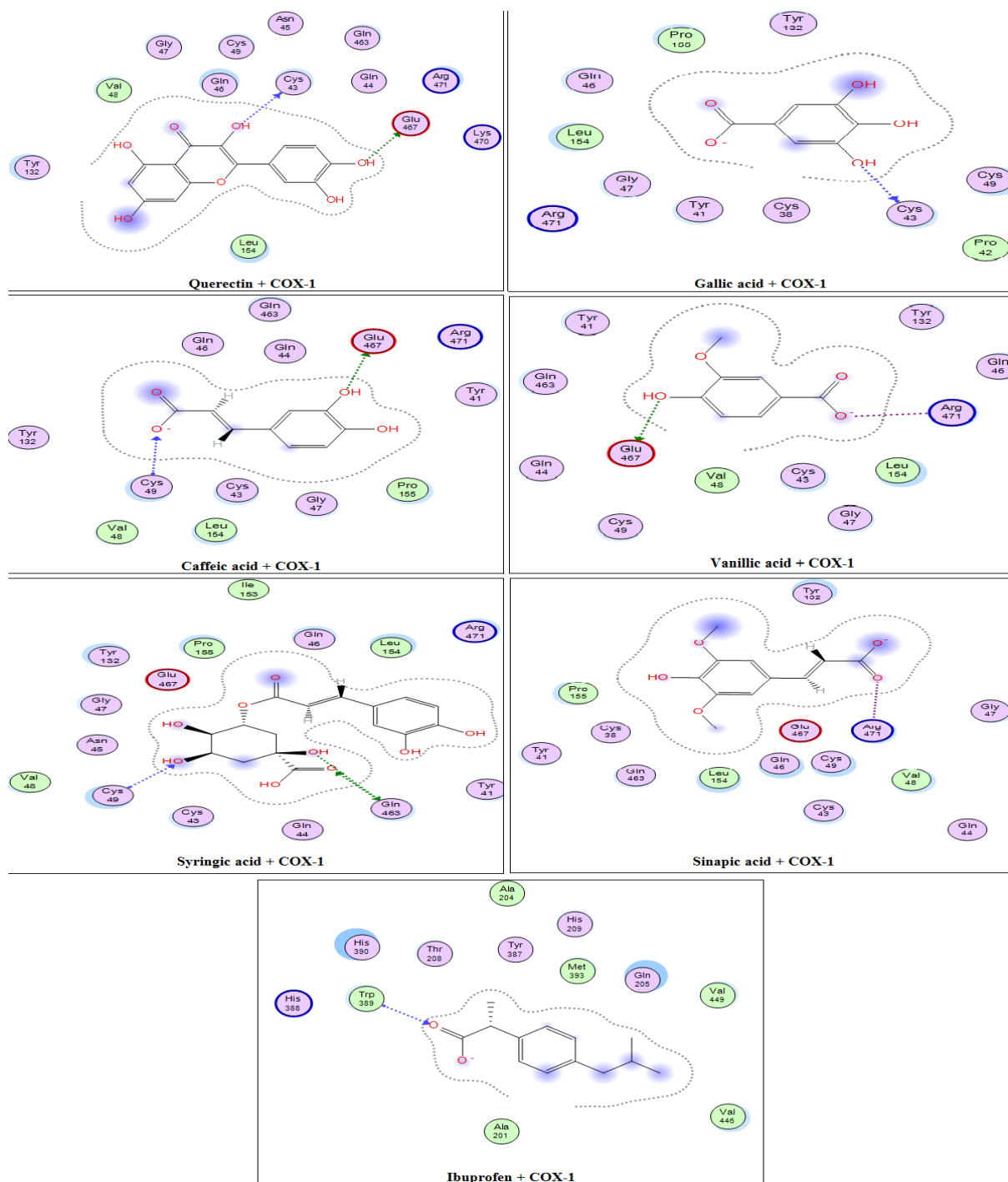


(B)

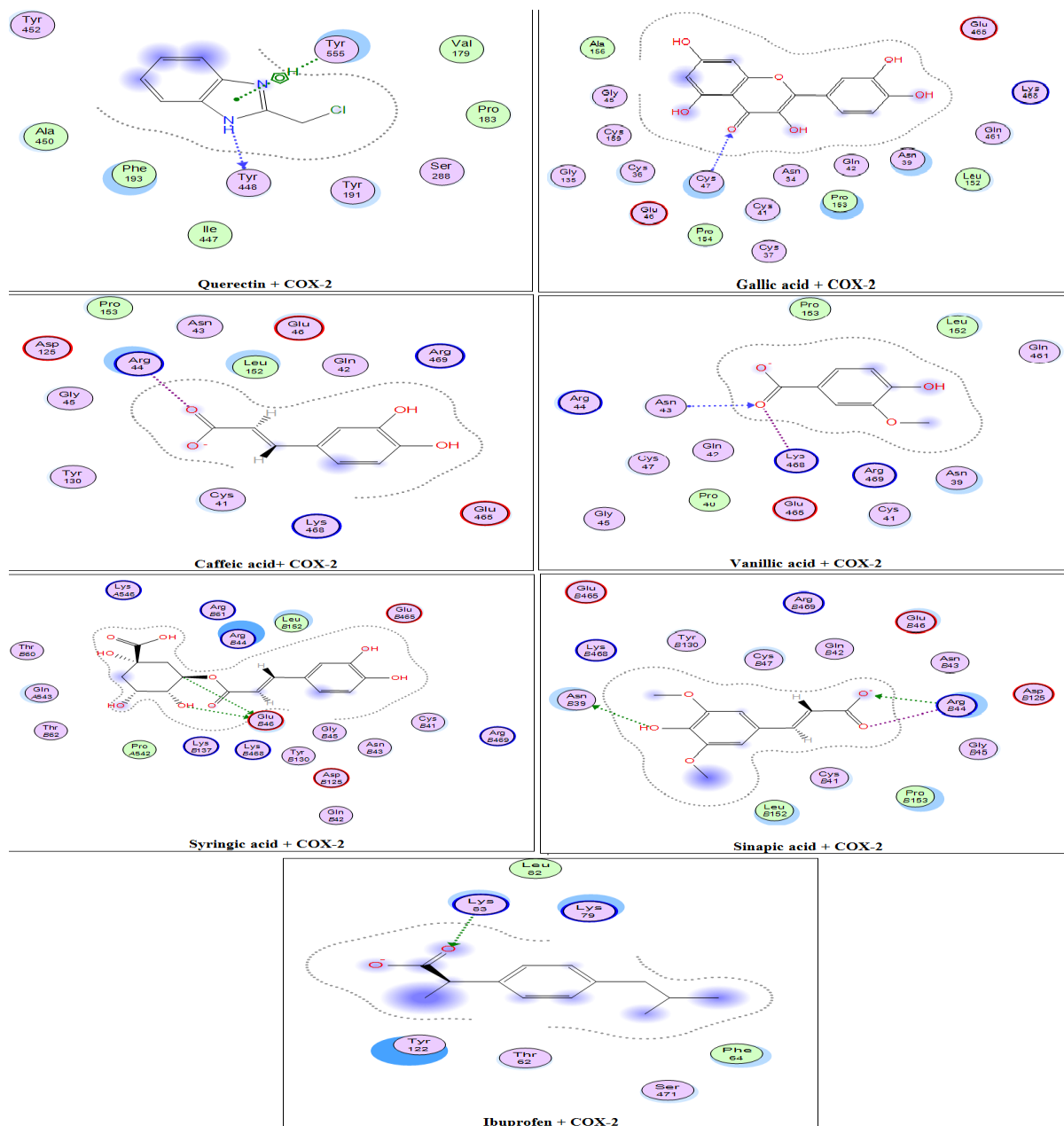


(C)

Supplementary Figure 1. (A) HPLC chromatogram of *Convolvulus arvensis* leaf extract (B) FTIR spectrum of leaves of *Convolvulus arvensis* leaf extract (C) GC-MS spectrum of *Convolvulus arvensis* leaf extract.



Supplementary Figure 2. Interaction of quercetin, gallic acid, caffeic acid, vanillic acid, syringic acid, sinapic acid and ibuprofen with COX-1 enzyme.



Supplementary Figure 3. Interaction of quercetin, gallic acid, caffeic acid, vanillic acid, syringic acid, sinapic acid and ibuprofen with COX-2 enzyme.

Supplementary Table 1. Effect of *Convolvulus arvensis* methanolic extract on complete blood count and biochemical parameters in acute oral toxicity study.

Parameters	Control group	Ca.Lme treated group	Parameters	Control group	Ca.Lme treated group
Hemoglobin (g/dL)	12.22 ± 0.02	13.36 ± 0.17***	Serum bilirubin (mg/dL)	0.70 ± 0.07	0.52 ± 0.01
TLC (× 10 ⁹ /L)	8.46 ± 0.02	9.73 ± 0.13***	Alkaline phosphatase (u/L)	340 ± 0.70	326.2 ± 2.74***
Total red blood cells (× 10 ⁹ /L)	6.53 ± 0.03	7.31 ± 0.07***	Alanine aminotransferase (u/L)	53 ± 1.21	44 ± 1.99***
Hematocrit (%)	38.41 ± 0.01	37.61 ± 0.03	Aspartate aminotransferase (u/L)	68 ± 1.93	51 ± 0.92***
Mean corpuscular volume (fl)	58.15 ± 0.02	65.05 ± 0.02***	Blood urea (mg/dL)	29 ± 0.71	26.31 ± 0.07
M C H (pg)	17.76 ± 0.058	19.03 ± 0.01	Serum creatinine (mg/dL)	0.95 ± 0.01	0.87 ± 0.02
M C H C (%)	33.65 ± 1.49	18.05 ± 0.02***	Serum cholesterol(mg/dL)	136.0 ± 1.30	130.0 ± 0.70*
Platelets (× 10 ⁹ /L)	759.4 ± 0.60	823.0 ± 0.71***	Serum triglycerides (mg/dL)	113.6 ± 0.51	118.0 ± 1.92**
Neutrophils (%)	6.40 ± 1.93	10.52 ± 0.13*	High density lipoproteins cholesterol (mg/dL)	43.8 ± 1.15	39.80 ± 1.43***
Lymphocytes (%)	95.40 ± 1.77	91.00 ± 0.83**	Low density lipoproteins (mg/dL)	125.60 ± 1.07	122.0 ± 1.44
Monocytes (%)	1.64 ± 0.02	10.06 ± 0.03***	Very low-density lipoproteins (mg/dL)	23.5 ± 1.55	19.6 ± 0.81
Eosinophils (%)	1.35 ± 0.02	6.48 ± 0.19 **			

*** showed $P < 0.001$, ** $P < 0.01$ and * $P < 0.05$ as compared with the control group. TLC; total leukocyte count, MCH: mean corpuscular hemoglobin, MCHC: mean corpuscular hemoglobin concentration, Ca.Lme: *Convolvulus arvensis* methanolic extract ($n=5$, mean \pm SD).

Supplementary Table 2. Effect of *Convolvulus arvensis* methanolic extract on hematological profile in normal and experimental rats.

Parameters	Arthritic control	Negative control	Ibuprofen 80mg/kg	Ca.Lme 100 mg/kg	Ca.Lme 200 mg/kg	Ca.Lme 400 mg/kg
Hemoglobin (g/dL)	10.43 ± 0.02	13.52 ± 0.15***	12.905 ± 0.03***	11.99 ± 0.04***	12.53 ± 0.10***	12.94 ± 0.02***
Red blood cells (×10 ¹² /L)	7.12 ± 0.03	7.94 ± 0.03***	7.76 ± 0.03***	7.95 ± 0.02***	8.22 ± 0.03***	8.57 ± 0.05***
White blood cells (×10 ⁹ /L)	12.24 ± 0.036	10.01 ± 0.03***	9.90 ± 0.03***	9.32 ± 0.06***	8.62 ± 0.04***	8.11 ± 0.02***
ESR (mm/1 st h)	20.16 ± 0.05	3.02 ± 0.02***	14.52 ± 0.01***	15.01 ± 0.01**	13.95 ± 0.01***	13.40 ± 0.21***
Rheumatoid factor (IU/mL)	55.41 ± 0.105	-	40.0 ± 0.70 ***	39.00 ± 0.70***	37.82 ± 0.01***	37.50 ± 0.22***

The statistical analysis was carried out by two-way ANOVA followed by Bonferroni *post hoc* test. *** showed $P < 0.001$ and ** $P < 0.01$ as compared with arthritic control. ESR: erythrocyte sedimentation rate, Ca.Lme: *Convolvulus arvensis* methanolic extract ($n=5$, mean ± SD).

Supplementary Table 3. Effect of *Convolvulus arvensis* methanolic extract on body weight of rats in CFA induced arthritis.

Treatments	Body weight gain (g)				
	Day 1	Day 5	Day 10	Day 15	Day 19
Arthritic control	151.8 ± 1.39	126.0 ± 0.89	119.0 ± 0.70	110.2 ± 2.17	106.6 ± 1.72
Negative control	140.8 ± 2.08***	141 ± 3.06***	142.4 ± 2.44***	150.2 ±1.46***	152.4 ± 1.86***
Ibuprofen 80 mg/kg	153.6 ± 1.32	155.6 ± 1.03***	153.0 ± 0.70***	155.200 ± 1.53***	162.6 ± 1.20***
Ca.Lme 100 mg/kg	154.8 ± 1.15	153.0± 0.70***	153.2± 1.15***	155.0 ± 0.89***	156.4± 0.67***
Ca.Lme 200 mg/kg	152.6 ± 0.92	157.8 ± 1.49***	154.2 ± 0.86***	163.80 ± 1.59***	163.2 ± 0.58***
Ca.Lme 400 mg/kg	156.6 ± 0.92*	160.8 ± 1.24***	154.40 ± 0.67***	161.80 ± 0.66***	164.0 ± 0.70***

The statistical analysis was carried out using two-way ANOVA followed by Bonferroni *post hoc* test. Ca.Lme: *Convolvulus arvensis* methanolic extract. *** = $P < 0.001$ as compared with arthritic control ($n=5$, mean ± SD).

Supplementary Table 4. Histopathological evaluation of ankle joint in rats at 19th day of treatment with *Convolvulus arvensis* methanolic extract after CFA injection.

Groups	Acute inflammation	Chronic inflammation	Cartilage destruction
Negative control	0	0	0
Arthritic control	3	3	3
Ibuprofen 80 mg/kg + CFA	1+	3	1+
Ca.Lme 100 mg/kg + CFA	0-1	3	1
Ca.Lme 200 mg/kg + CFA	0-1	2	1
Ca.Lme 400 mg/kg + CFA	0	1	0-1

0-1 showed that occasional cells were seen while 1, 2 and 3 showed severity. Ca.Lme:

Convolvulus arvensis methanolic extract; CFA: Complete Freund's adjuvant.