



Volume 99

2018

p-ISSN: 0209-3324

e-ISSN: 2450-1549

DOI: <https://doi.org/10.20858/sjsutst.2018.99.3>



Journal homepage: <http://sjsutst.polsl.pl>

Article citation information:

Dogan, E., Korkmaz, E., Akgungor, A.P. Comparison of different approaches in traffic forecasting models for the D-200 highway in Turkey. *Scientific Journal of Silesian University of Technology. Series Transport*. 2018, **99**, 25-42. ISSN: 0209-3324.

DOI: <https://doi.org/10.20858/sjsutst.2018.99.3>.

Erdem DOGAN¹, Ersin KORKMAZ², Ali Payidar AKGUNGOR³

COMPARISON OF DIFFERENT APPROACHES IN TRAFFIC FORECASTING MODELS FOR THE D-200 HIGHWAY IN TURKEY

Summary. Short-term traffic estimations have a significant influence in terms of effectively controlling vehicle traffic. In this study, short-term traffic forecasting models have been developed based on different approaches. Seasonal autoregressive integrated moving average (SARIMA), artificial bee colony (ABC) and differential evolution (DE) algorithms are the techniques used in the optimization of models, which have been developed by using observation data for the D-200 highway in Turkey. 80% of the data were used for training, with the remaining data used for testing. The performances of the models were illustrated with mean absolute errors (MAEs), mean absolute percentage errors (MAPEs), the coefficient of determination (R²) and the root-mean-square errors (RMSEs). It is understood that all the models provided consistent and useful results when the developed models were compared with the statistical results. In the models created separately for two lanes, the R² values of the models were calculated to be approximately 92% for the right lane, which is generally used by heavy vehicles, and 88% for the left lane, which is used by less traffic. Based on the MAE and RMSE values, the model developed by the ABC algorithm gave the

¹ Kirikkale University, Faculty of Engineering, Department of Civil Engineering, Yahşihan, Kirikkale, Turkey. Email: edogan@kku.edu.tr.

² Kirikkale University, Faculty of Engineering, Department of Civil Engineering, Yahşihan, Kirikkale, Turkey. Email: ersinkorkmaz@kku.edu.tr.

³ Kirikkale University, Faculty of Engineering, Department of Civil Engineering, Yahşihan, Kirikkale, Turkey. Email: akgungor@kku.edu.tr.

lowest error and showed more effective performance than the other approaches. Thus, the ABC model showed that it is appropriate for use on other highways in Turkey.

Keywords: traffic forecasting; SARIMA; differential evolution algorithm; artificial bee colony algorithm

1. INTRODUCTION

The increase in travel demand causes an increase in traffic density. This situation requires traffic management to be carried out more efficiently. Thus, people can travel more efficiently since warnings and instructions for the drivers will be reduced as a consequence. Being aware of current and expected traffic conditions is of critical importance in the decision-making process. Therefore, many researchers have used different approaches to forecast short-term traffic flow.

The Box-Jenkins technique is one of the cornerstone statistical methods, which has been applied in short-term traffic forecasting [1]. Since its introductions, different algorithm approaches have been used to study this subject. For example, Chrobok et al. [2] used traffic data obtained over two years with the help of 350 detectors in Duisburg, a city in Germany. Traffic flow data were collected at 1-min intervals and divided into four different groups via the developed method. As a result, they found that intuitive models showed better results in long-term traffic forecasting, while linear models showed better results in short-term traffic forecasting. Zhong et al. [3] developed a time-delayed artificial neural network (ANN) and genetically designed regression models for traffic predictions with regard to different types of roads via data obtained from rural roads. Hourly, daily and seasonal forecasting models have been developed for traffic data and compared using different period data. It has been found that the weighted regression model gives better results. Vlahogianni et al. (4) conducted a short-term traffic forecasting study using an ANN on a road corridor where there are intersections with traffic signals. The authors indicated that the ANN gave the best results for predictions in light of previous studies, which preferred to optimize ANN weights by a genetic algorithm (GA) according to different road characteristics. Researchers have developed ANN architectures by using two types of inputs, namely, univariate and multivariable. Ultimately, they pointed out that the GA-optimized ANN offers potential to forecasting models. Jiang et al. [5] tried to make traffic forecasts on a daily and hourly scale by creating a dynamic wavelet ANN model. Researchers have indicated that this model is a powerful approach for acquiring traffic flow; furthermore, it uses the “Mexican hat wave” to improve the model. Lam et al. [6] estimated the average daily traffic value with the help of two non-parametric models. The Gaussian maximum likelihood (GML) and non-parametric regression (NPR) models are presented with the help of information obtained from 87 counting stations. It has been stated that the NPR model provides more accurate results than the GML model for most stations. Another result from this study was that the NPR model is better at adapting to sudden and unexpected traffic flow conditions. Zhang and Ye [7] used the fuzzy logic (FL) model to estimate short-term traffic flow. Previously used traffic flow forecasting methods are the Kalman filter (KF), the exponential smoothing method (ESM), backpropagation neural networks (BPNNs) and the autoregressive integrated moving average (ARIMA), which were applied in order to generate input parameters for the FL model. When the proposed model was compared with existing methods, using dual-loop data collected from I-35 in San Antonio City, Texas, the fuzzy logic system was found to make more accurate and stable predictions. Shekhar and Williams [8] designed the SARIMA model so that it could

adapt to new seasonal data. They compared the 15-min traffic forecast values of this model and the other models including KF, recursive least squares and least mean squares. As a result, all models provided consistent results, while it has been proposed that the developed SARIMA model should provide convenience to intelligent transport system applications in the field. Castro-Neto et al. [9] developed the online support vector machine (OL-SVM) method to estimate traffic flow in typical and atypical traffic conditions. The accurate prediction of the models has been assessed according to two different scenarios. In the first scenario, which is considered as typical traffic conditions, three working days a week were examined. On the other hand, in the second scenario, which considers atypical traffic conditions, holidays and days when traffic accidents occurred were examined. The proposed model has been compared to three different prediction models: GML, Holt exponential smoothing and ANN models. It is seen that the GML model made more effective predictions in the first scenario. It is emphasized that the developed OL-SVM model provides more accurate results than the other methods in the second scenario. Zargari et al. [10] performed short-term traffic forecasting using three different computational intelligence techniques, namely, linear genetic programming (LGP), multilayer perceptron (MLP) and FL. All models have been developed for the traffic flow rates in the 5-min and 30-min time intervals. LGP and MLP models provide consistent results; and, in general, these results are reported as better than FL results. Another result is that the 30-min estimates are better than the 5-min estimates. Hong et al. [11] attempted to estimate traffic flow by using the support vector regression (SVR) and the ant colony optimization (ACO) methods. The results of this study have also been compared with the predictions of the SARIMA model. Researchers have reported that the hybrid model was not only better than the SARIMA model but could easily be used in traffic control centres. Xia et al. [12] developed an algorithm that identifies online traffic situations. This method, which works with 5-min data on traffic flow, density and speed, tries to classify next 1-min data. The developed method has been tested on two different highways, with test results showing that the identified freeway traffic states via the proposed procedure were reasonable and consistent. Tchrakian et al. [13] used the spectral analysis technique to estimate the 15-min short-term predictions for traffic with real-time updating. Therefore, they sought predictions for within-day traffic flow using a forecasting horizon of 1 h and 15 min in 15-min steps. They indicated that the technique combines the features of a time series-based prediction with spectral analysis, which is appropriate for estimations in low-frequency modes. Guo et al. [14] performed data smoothing with a single spectrum analysis method for better short-term traffic estimation. Smoothed data have been utilized in a novel prediction method known as the grey system model (GSM) to predict traffic flows on urban roads. The new model has been compared to the SARIMA model in the context of corridor data from Central London. As a result, it has been reported that better results are obtained when smoothing is applied.

Recently, artificial intelligence methods, such as ANN, DE and ABC algorithms, have been used in engineering and transportation problems. Even though ABC and DE algorithms are not used in traffic estimation, they have been applied to address many issues, such as signal optimization and delay, with successful results obtained. The ANN method has been used in the estimation of delay and vehicle stops at signalized intersections by Doğan et al. [15], while Dell'Orco et al. [16,17] applied the ABC and harmony search algorithms to traffic signal optimization. The method, based on the harmonic search algorithm, has produced effective and simpler optimization results. In addition, it has been shown that the ABC method improves the performance index by 2.4- 2.7% in comparison with the GA and the hill climbing algorithm. Yunrui et al. [18] examined the traffic signal control with the DE

algorithm, stating that it was effective in determining system parameters and the results were good enough to reduce delay, queue length and parking ratio. Lin [19] used this technique to resolve transport problems with fuzzy coefficients and showed that the results were as effective as GAs in solving transportation problems. Artificial intelligence methods are also widely used in image analysis [20-27], which is applied in the optimization of transport processes.

In this article, models based on SARIMA, ABC and DE algorithms will be presented, and the performance of different approaches will be shown. The absence of traffic estimation studies, based on ABC and DE algorithms, distinguishes this article from other studies. In the second section of the paper, the methods to be used in developing the models will be explained. Additionally, traffic flow data used to develop models will be briefly explained in the same section. After testing the developed models, which will be mentioned in the next section, the generated values will be presented in the findings section. The results and proposals for further studies are given in the last section.

2. METHODOLOGY

2.1. Traffic flow data

The traffic count was carried out on the D-200 highway, which is on the border of Kırıkkale, in the Turkish interior. The city is an important point linking 35 cities to each other. The D-200 state road, where the study was conducted, is a two-way, two-lane highway. There were no factors (e.g., signalized intersections or entrance link.) that could have cut off the main road traffic for 20 km in the forward and backward directions in the measurement section of the D-200 highway with two platforms. For this reason, uninterrupted flow conditions prevailed in the section where the count was made. The counting process was carried out with NC-350 traffic counting devices placed separately on the right and left lanes in a one-way direction. Each count represented a 15-min period. At the end of the count, a total of 4,512 data items were collected. Since the data collection and battery capacity of the counting devices were limited, the data collection process was completed with three separate counting studies. Time losses due to device changes between each counting study and other unknown reasons caused interruptions in data collection. The missing data was completed, as shown in Fig. 1, by taking data from the previous week for the same day and time. In this way, the incomplete amount of data, equivalent to less than 1% of the total amount, was practically completed.

Among the examined dates, a daily average of 8,627 vehicles was counted for the right and left lanes. The maximum number of vehicles was 720 vehicles/s for the right lane and 684 vehicles/h for the left lane. Approximately 27% of the vehicles using the right lanes and 16% using the left lanes were heavy vehicles.

2.2. Seasonal autoregressive integrated moving average

The autoregressive integrated moving average (ARIMA) method is used in the analysis of time series and predicting future values. The first basic characteristic of the method was described by Peter Whittle in 1951, but was popularized in 1971 with a book published by Box and Jenkins [28]. In the ARIMA method, values of any given time in its series are indicated by a linear eq. consisting of values for the previous period and errors made in

estimation terms. It is accepted that the average of the series used in the model is ‘0’ and that variance is constant throughout the series, that is, the series is stationary. For non-stationary series, previous values of the series can be stabilized by taking the differences as shown in Eq. 1. This is known as a stationary process. In Eq. 1, Δ is called the difference operator. The difference operation is performed according to this equation, while the delay value is 1. The difference operation for delay value 2 is given in Eq. 2.

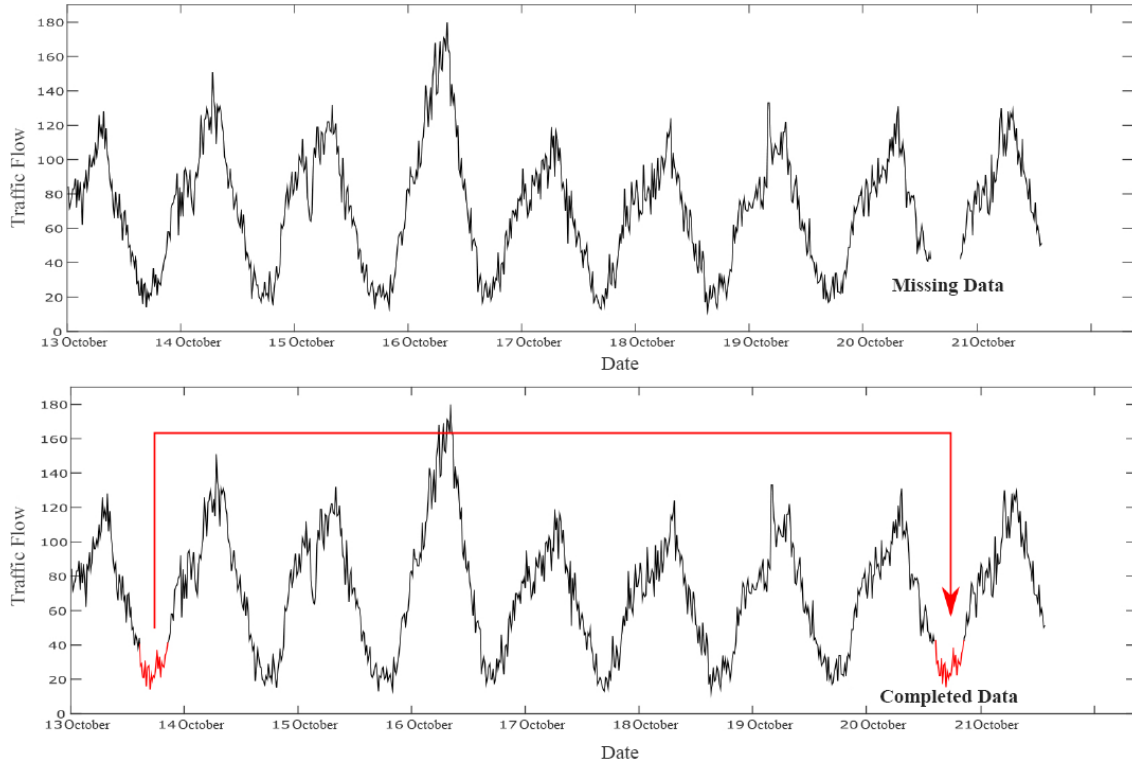


Fig. 1. Completion of missing data

$$\Delta x_t = x_t - x_{t-1} \tag{1}$$

$$\Delta^2 x_t = x_t - x_{t-1} - (x_{t-1} - x_{t-2}) \tag{2}$$

In the ARIMA models, the lag operator (L) is used to simplify the expression of the stationary process as an equation. The lag operator is defined as per Eq. 3.

$$L^j x_t = x_{t-j} \tag{3}$$

ARIMA (p, d, q) models consist of two main parts: autoregressive (AR) and moving average (MA) parts. The AR part expresses the relation between the time series and previous time values. The level of this relationship is shown as AR (p). MA (q) represents the error terms for the prediction. ARMA (p, q) can be expressed in terms of AR (p) and MA (q) in Eq. 4.

$$x_t = \phi_1 x_{t-1} + \phi_2 x_{t-2} + \dots + \phi_p x_{t-p} + \varepsilon_t - \theta_1 \varepsilon_{t-1} - \theta_2 \varepsilon_{t-2} - \dots - \theta_q \varepsilon_{t-q} \tag{4}$$

where x_t and ε_t are the actual value and random error at time period t, respectively.

The seasonal ARIMA representation is SARIMA (p, d, q) (P, D, Q)s. The general notation with the lag operator (L) is given in Eq. 5.

$$\phi(L)\Phi(L^s)(1-L)^d(1-L^s)^D x_t = \theta(L)\Theta(L^s)\varepsilon_t \quad (5)$$

where:

$\phi(L)$ - AR polynomial

$\Phi(L^s)$ - seasonal AR polynomial (SAR)

$\theta(L)$ - MA polynomial

$\Theta(L^s)$ - seasonal MA polynomial (SMA)

$(1-L)^d, (1-L^s)^D$ - difference and seasonal difference, respectively

2.3. Differential evolution algorithm

The DE algorithm, which was introduced by Storn and Price [29], is a population-based and intuitive approach with a working principle close to the GA. The DE algorithm, which is basically based on the GA, has a structure consisting of four basic steps. In other words, simple arithmetic operators in the DE algorithm are combined with traditional operators in the GA. These basic steps are initial population, mutation, crossover and selection. However, some existing operational differences distinguish this algorithm from the GA. Using real-value variables and having a different mutation process are some of the most important differences between them. In the mutation operator of the DE algorithm, differences between randomly selected vectors are used so that the appropriate step size can be determined using these differences. This situation makes the mutation operator adaptive. The algorithm's mutation operator improves its performance and makes it stronger. In addition, not all operators are applied to the whole population as in the case of the GA, while these operations are performed on randomly selected chromosomes. In brief, a fundamental difference with the DE algorithm involves the technique of creating the trial vector by combining the weighted difference vector with the base vector. What should be noted here is that enough diversity should be provided to the population to avoid early convergence. The DE algorithm can be controlled with fewer parameters including the step size (F), the crossover probability constant (CR) and the population size (NP).

The most important part of any heuristic search method is to create the initial population. The best result can be found and the convergence can be done quickly when the initial population is correctly created. The number of input variables (D) is determined by the size of each chromosome, while the number of chromosomes in the population is determined by the user. The population size (NP) cannot be less than 3 since at least three different chromosomes are needed to obtain the difference vector and the base vector. The initial population is determined by the upper and lower bounds of the parameters. The mathematical expression of the initial population is given in Eq. 6.

$$X_{j,i}^{(0)} = X_j^{\min} + rand_j(0,1).(X_j^{\max} - X_j^{\min}) \quad (6)$$

where X_j^{\max} and X_j^{\min} are the upper and lower bounds of the j-th parameter.

Usually, one or two difference vectors are used in the mutation operator. If one difference vector is used, the mathematical expression is shown in Eq. 7.

$$X_i^{(G)} = X_a^{(G)} + F(X_b^{(G)} - X_c^{(G)}) \quad (7)$$

where $X_i^{(G)}$ is the mutant vector, $X_a^{(G)}$ is the base vector, G is generation number, F is the scaling constant, $X_b^{(G)}$ and $X_c^{(G)}$ are randomly selected vectors to produce the difference vector.

In the mutation operator, DE uses many different strategies: DE/best/1/exp, DE/rand/1/exp, DE/best/2/exp, DE/rand/2/exp, DE/best/1/bin, DE/rand/1/bin, E/best/2/bin, DE/rand/2/bin, where rand or best refers to a base vector, 1 or 2 is the number of difference vectors, and exp or bin is the type of crossover. In the crossover operator, the trial vector is obtained via a combination of the mutant vector and the target vector. One of the three different crossover methods and CR are used in this process. These methods are binomial, exponential and arithmetic. In the binary crossover method, the vectors forming the test vector are selected from the mutant vector and the target vector by the crossover rate. The choice of each vector is independent of each other. The aim is to prevent the trial vector from being a duplication of the target vector and to force one of the vectors forming the trial vector to come from the mutant vector. The expression of the crossover method under these conditions is given by Eq. 8.

$$X_i^{(G)} = \begin{cases} X_i^{(G)} & \text{if } rand_j(0,1) \leq C_r \text{ or } j = J_{rand} \\ X_i^{(G)} & \text{otherwise} \end{cases} \quad (8)$$

where $X_i^{(G)}$ is the trial vector and $rand_j$ varies from 0 to 1, according to the uniform distribution, and $rnbr(i)$ ranges from 1 to D.

In the exponential method, the crossover is similar to the crossover operator at one or two points, and it is the same as the crossover used in this genetic algorithm. The expression for the exponential crossover method is given by Eq. 9.

$$X_i^{(G)} = \begin{cases} X_i^{(G)} & \text{if } j = (n)_D, (n+1)_D \dots (n+L-1)_D \\ X_i^{(G)} & \text{otherwise} \end{cases} \quad (9)$$

where n is the random integer between 1 and D, and (n) D is the remainder of n/D.

The arithmetic crossover, as expressed by Eq. 10, is the result of an arithmetic combination of the target vector and the mutant vector.

$$X_i^{(G)} = (1 - q)X_i^{(G)} + qX_i^{(G)} \quad (10)$$

where q is the weight coefficient that regulates the equilibrium between the mutant vector and the target vector.

The creation of a new generation occurs in the selection operator, which is the last operation of the DE algorithm. It creates a new generation by making the best choice between the test vector and the target vector to minimize the fitness function. The expression for the selection operator is given by Eq. 11.

$$X_i^{(G+1)} = \begin{cases} X_i^{''(G)} & \text{if } f(X_i^{''(G)}) \leq f(X_i^{(G)}), i = 1..Np \\ X_i^{(G)} & \text{otherwise} \end{cases} \quad (11)$$

In their study, Mallipeddi et al. confirmed the optimum range for the DE, NP, CR and F parameters, stating that it should be between 4D and 10D for NP, between 0.9 and 1 for CR, and between 0.4 and 0.95 for F [30].

2.4. Artificial bee colony algorithm

In 2005, Karaboğa [31] developed the ABC algorithm by modelling the food search behaviour of bees. Karaboğa made some assumptions in order to make the algorithm simpler in the development process. In his assumptions, every source in the solution space is used by an employed bee and the number of employed bees in the population is equal to the number of onlooker bees. Thus, each source that refers to the solution of the problem and the amount of food in the source also indicate the suitability of the solution. In this case, the point that expresses the minimum or the maximum value for the problem is the source that has the most nectar. At the beginning of the algorithm, the food sources are searched by the scout bees, then the nectars are collected from these sources. Therefore, the bees returning to employment, after scouting has ended, carry the nectar to the hive and share the source information with onlooker bees. While onlooker bees move towards rich sources, according to the shared information, employed bees leave the depleted sources. Employed bees returning from depleted sources are classified as scout bees given that they investigate new sources. This situation continues over a number of cycles until an optimum solution is found. The high performance of the algorithm is only possible if the initial source is created correctly. In this respect, it is essential that the sources corresponding to the solutions, including the entire search space, are randomly determined. In this regard, the sources representing the solution points need to be determined at random. The mathematical expression of initial sources is given in Eq. 12.

$${}^0x_j = \min x_j + \text{rand}(0,1)(\max x_j - \min x_j) \quad (12)$$

where 0x_j creates a source, and $\max x_j$ ve $\min x_j$ refer to the lower and upper limits of each parameter.

There are searches for new sources in the neighbourhood of the initial one, which randomly creates sources. The mathematical expression for seeking the new sources is given in Eq. 13.

$$v_{ij} = x_{ij} + \Phi_{ij}(x_{ij} - x_{kj}) \quad (13)$$

where x_{ij} is an existing food source, v_{ij} represents new resources sought in the neighbourhood of the existing resource, Φ_{ij} is a random number varying between -1 and 1, and x_{kj} represents a randomly selected neighborhood solution. Decreasing the difference between x_{ij} and x_{kj} provides the optimum solution. There are boundaries for v_{ij} in expressing the source of the neighbourhood; and, if these boundaries are violated, v_{ij} is again shifted between these boundaries. These boundaries are given in Eq. 14.

$$v_{ij} = \begin{cases} x_j^{min} & , & v_{ij} < x_j^{min} \\ v_{ij} & , & x_j^{min} \leq v_{ij} \leq x_j^{max} \\ x_j^{max} & , & v_{ij} > x_j^{max} \end{cases} \quad (14)$$

The calculation of the quality of new resources is carried out as a result of finding new sources within the limit values. The mathematical expression of the fitness function is given in Eq. 15.

$$fitness_i = \begin{cases} 1/(1 + f_i) & , & f_i \geq 0 \\ 1 + abs(f_i) & , & f_i < 0 \end{cases} \quad (15)$$

where the value of f_i is the cost value of neighborhood resource v_{ij} .

The choice between the existing source and the new source is made by performing a greedy selection process according to the fitness values of the resources. Since the selection process is performed according to a roulette wheel, the sharing of each region in wheel is determined. The expression for the probability of the selection function is given in Eq. 16.

$$p_i = \frac{fitness_i}{\sum_{j=1}^{SN} fitness_j} \quad (16)$$

where $fitness_i$ is the fitness value of i and p_i is the probability of selection.

3. DEVELOPMENT OF THE MODELS

80% of the 4,512 traffic data items collected from the D-200 highway were used in developing models, with the remaining data used for testing. Different traffic flow prediction models were developed using the SARIMA, ABC and DE methods depending on the training data. These models are discussed in detail below.

3.1. Seasonal autoregressive integrated moving average traffic flow forecasting model

In order to develop the SARIMA model for traffic flow data, the variance must be constant and the average must be '0'. In addition, the data set must be stationary. Autocorrelation is used to determine the stability of the time series. The autocorrelation function (ACF) can be defined as the correlation function between the values of a time series at different times. The Box-Jenkins method [28] has been used to determine the model. In Fig. 2, the ACF and the partial ACF (PACF) are shown for right and left lanes. These functions are used for determining the AR and MA degrees.

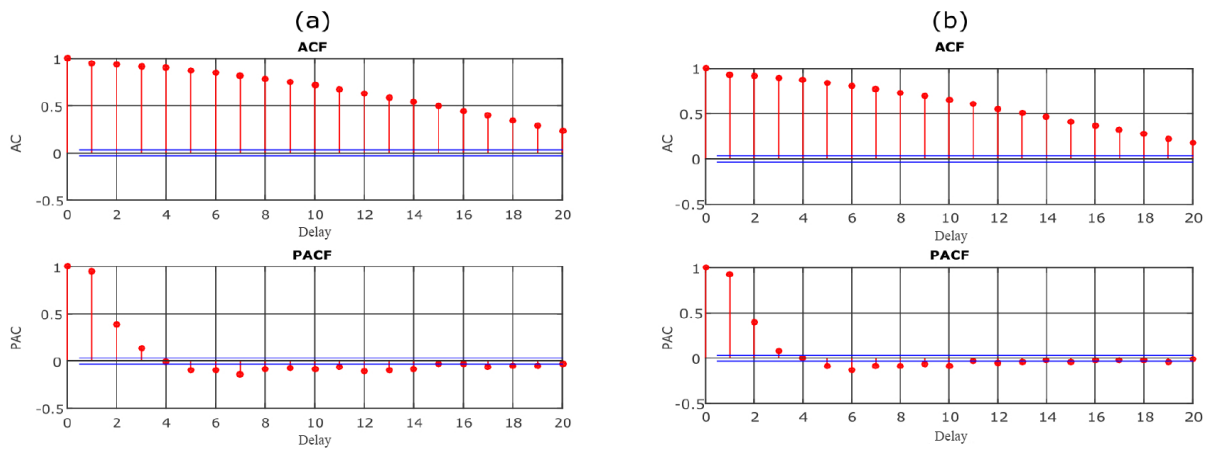


Fig. 2. Right (a), left (b) ACF and PACF values

The slow decrease in ACF values in Fig. 2 for both lanes indicates that the series is not stationary. For this reason, the series has been stabilized by applying difference procedures. In Fig. 3, it is observed that the ACF and PACF values are cut off at the first delay value for both lanes. This indicates the state of MA (1). It is also revealed that the series has negative ACF values, which indicates the state of SMA (672). The appropriate time series model is expected to occur in SARIMA (0,1,1) (0,1,1)₆₇₂.

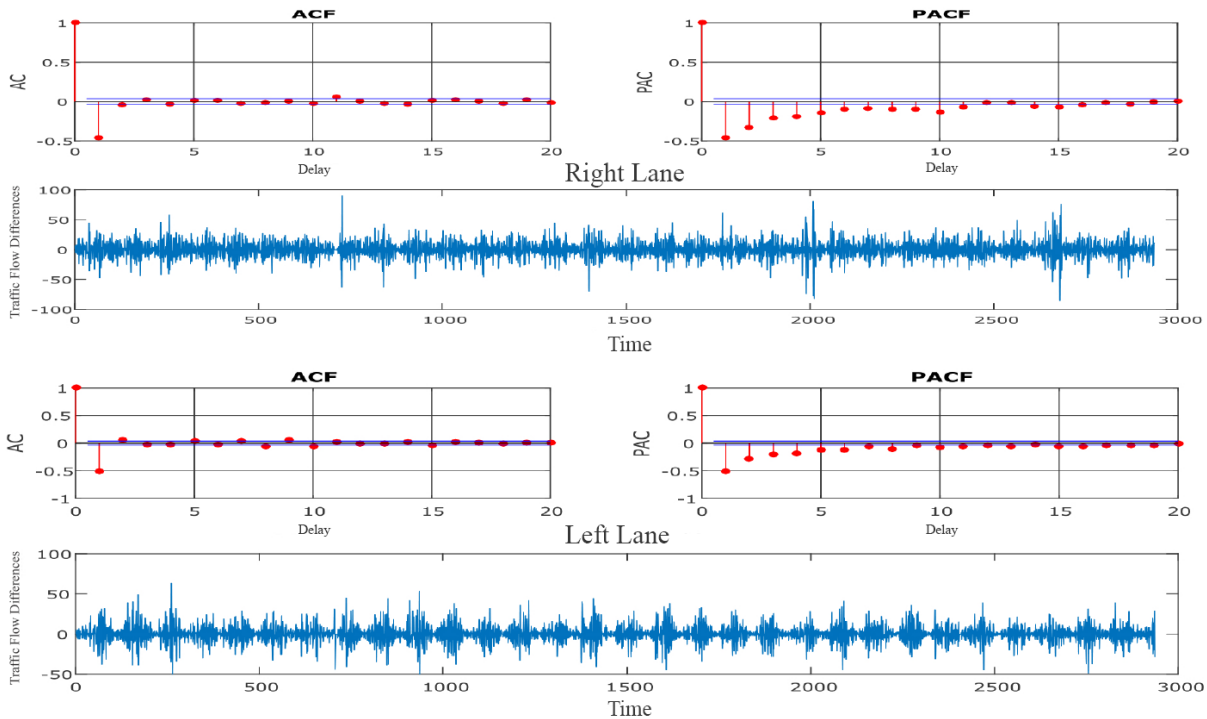


Fig. 3. ACF, PACF and lags of traffic flows after stabilization

In addition to the model indicated by the Box-Jenkins method, ARIMA and SARIMA models with different structures have been developed for comparison purposes. The model types used for comparison and the mean squared errors (MSEs), as shown in Eq. 17, for estimations are given in Tab. 1.

$$MSE = \frac{1}{n} \sum_{i=1}^n (tf_{observed} - tf_{estimated})^2 \tag{17}$$

where $tf_{observed}$ is actual traffic flow values and $tf_{estimated}$ is the model's traffic flow forecast value.

Tab. 1.

Mean squared errors of models for test data

No.	ARIMA	MSE right	MSE left	No	SARIMA	MSE right	MSE left
1	(0,1,1)	3243.2	955.5	6	(0,1,1) (0,1,1) ₉₆	234.92	337.5
2	(0,1,2)	3559.0	954.5	7	(0,1,1) (0,1,1) ₆₇₂	526.24	236.1
3	(1,1,0)	3243.2	955.5	8	(0,1,1) (1,0,1) ₉₆	3024.5	983.7
4	(1,1,1)	2971.5	918.7	9	(0,1,1) (1,0,1) ₆₇₂	233.51	119.7
5	(1,1,2)	2959.1	915.8	10	(1,0,1) (0,1,1) ₉₆	153.41	138.5
				11*	(1,0,1) (0,1,1) ₆₇₂	94.38	64.66
				12	(1,1,1) (1,1,1) ₉₆	236.78	314.1
				13	(1,1,1) (1,1,1) ₆₇₂	223.55	170.9

The lowest MSE values of 94,38 and 64,66 were observed in the SARIMA (1,0,1) (0,1,1)₆₇₂ model. The SARIMA model proposed according to the Box-Jenkins method had a worse performance. When the ACF and PACF values of the SARIMA (1,0,1) (0,1,1)₆₇₂ model are examined, it is understood that this model should be used because there is no correlation in the series and it has low MSE values. The general expression of this model for the right and left lanes is given by Eqs. 18-19, respectively.

$$SARIMA(1,0,1)(0,1,1)_{672}(1 - 0,961L)^1(1 - L^{672})^1x_t = (1 + 0,832L)(1 + 0,672L^{672})\epsilon_t \tag{18}$$

$$SARIMA(1,0,1)(0,1,1)_{672}:(1 - 0,937L)^1(1 - L^{672})^1x_t = (1 + 0,763L)(1 + 0,513L^{672})\epsilon_t \tag{19}$$

3.2. Artificial bee colony and differential evolution traffic flow forecasting models

Traffic flow forecasting models developed using ABC and DE algorithms are presented in three different forms, with these models optimized using the proposed algorithms. The traffic data belonging to the previous time series are used as model parameters. These traffic data are the number of vehicles belonging to the times that are 1 h before the time when short-term traffic flow is predicted. These model forms have been selected in this study as linear, semi-quadratic and power form. The expressions of these forms are given in Eqs. 20-22.

Linear form:

$$Tf_{Lest} = w_1X_1 + w_2X_2 + w_3X_3 + w_4X_4 + w_5 \tag{20}$$

Semi-quadratic form:

$$Tf_{Sqest} = w_1X_1 + w_2X_2 + w_3X_3 + w_4X_4 + w_5\sqrt{X_1X_2} + w_6\sqrt{X_1X_3} + \sqrt{X_1X_4} + w_8\sqrt{X_2X_3} + w_9\sqrt{X_2X_4} + w_{10}\sqrt{X_3X_4} + w_{11} \quad (21)$$

Power form:

$$Tf_{Pest} = w_1X_1^{w_2}X_2^{w_3}X_3^{w_4}X_4^{w_5} \quad (22)$$

where X_1 is the number of vehicles in time $t-60$, X_2 is the number of vehicles in time $t-45$, X_3 is the number of vehicles in time $t-30$, X_4 is the number of vehicles in time $t-15$, and W_i values are coefficient values related to equations.

The important point with these models is the number of independent variables used in the form of the equations. The use of four different traffic data items obtained 1 h before the desired time ensures that the model is more consistent. The use of more parameters is not preferred as it will cause the models to move away from practicality. There has been an attempt to use the most optimal number of independent parameters since the use of fewer parameters will also move the model away from accuracy. Coefficient values of models optimized by the DE and ABC approaches are found according to training data. Each approach used in the determination of coefficient values requires control parameter values, so that the algorithm can perform the operators and reach the optimum solution. The parameter values used in the DE algorithm are given in Tab. 2.

Tab. 2.

Control parameters of the DE algorithm

Population size (Np)	30
Crossover state (CR)	0.90
DE step size (F)	0.95
Mutation strategy	DE/best/1/exp
Maximum number of iterations	1,000

These values, as used in the DE algorithm, have been chosen according to the optimum intervals determined by Mallipeddi et al. [30]. As a result of the analysis using different parameter values, it is understood that there is no difference between the coefficients of the model; rather, there is only a difference in the number of iterations used to find the optimum solution. The control parameters used in the ABC algorithm are given in Tab. 3.

Tab. 3.

Control parameters of ABC algorithm

Number of bees in the colony (Np)	50
Number of food sources	Np/2
Number of sources depleted by bees	100
Maximum number of iterations	1,000

The coefficients of the models for the right and left lanes are given in Tabs. 4-5.

Tab. 4.

DE model coefficients

Right lane			Left lane		
Linear	Power	Semi-quadratic	Linear	Power	Semi-quadratic
$w_1=0.0006$	$w_1=1.151$	$w_1=-0.018$	$w_1=-0.008$	$w_1=1.043$	$w_1=-0.310$
$w_2=0.154$	$w_2=0.022$	$w_2=-0.145$	$w_2=0.104$	$w_2=0.203$	$w_2=-0.059$
$w_3=0.325$	$w_3=0.178$	$w_3=-0.159$	$w_3=0.339$	$w_3=0.232$	$w_3=0.148$
$w_4=0.490$	$w_4=0.185$	$w_4=-0.541$	$w_4=0.525$	$w_4=0.139$	$w_4=0.480$
$w_5=1.890$	$w_5=0.584$	$w_5=0.603$	$w_5=0.878$	$w_5=0.415$	$w_5=0.164$
		$w_6=-1.169$			$w_6=0.324$
		$w_7=1.105$			$w_7=0.116$
		$w_8=0.848$			$w_8=0.118$
		$w_9=-0.860$			$w_9=0.041$
		$w_{10}=1.827$			$w_{10}=-0.061$
		$w_{11}=2.330$			$w_{11}=1.161$

Tab. 5.

ABC model coefficients

Right lane			Left lane		
Linear	Power	Semi-quadratic	Linear	Power	Semi-quadratic
$w_1=0.0006$	$w_1=1.187$	$w_1=0.185$	$w_1=-0.009$	$w_1=1.167$	$w_1=-0.151$
$w_2=0.154$	$w_2=-0.009$	$w_2=-0.085$	$w_2=0.104$	$w_2=0.001$	$w_2=0.008$
$w_3=0.325$	$w_3=0.142$	$w_3=0.081$	$w_3=0.340$	$w_3=0.101$	$w_3=0.115$
$w_4=0.490$	$w_4=0.335$	$w_4=-0.032$	$w_4=0.528$	$w_4=0.331$	$w_4=0.469$
$w_5=1.890$	$w_5=0.493$	$w_5=-0.022$	$w_5=0.878$	$w_5=0.527$	$w_5=-0.067$
		$w_6=-0.500$			$w_6=0.237$
		$w_7=0.129$			$w_7=0.128$
		$w_8=0.280$			$w_8=0.233$
		$w_9=0.210$			$w_9=0.010$
		$w_{10}=0.728$			$w_{10}=-0.018$
		$w_{11}=1.650$			$w_{11}=1.025$

4. RESULTS AND DISCUSSION

In order to demonstrate the accuracy of the models, the findings of the models have been compared and performance assessments have been carried out. In this evaluation, RMSEs, MAEs, MAPEs and the coefficient of determination R^2 have been selected as performance criteria. Mathematical expressions of performance criteria are given in Eqs. 23-26.

$$RMSE = \sqrt{\frac{1}{n} \sum_{i=1}^n (tf_{Observed} - tf_{estimated})^2} \quad (23)$$

$$MAE = \frac{1}{n} \sum_{i=1}^n |tf_{Observed} - tf_{estimated}| \quad (24)$$

$$MAPE = \frac{1}{n} \sum_{i=1}^n \left| \frac{tf_{Observed} - tf_{estimated}}{tf_{Observed}} \right| * 100 \quad (25)$$

$$R^2 = 1 - \left[\frac{\sum_{i=1}^n (tf_{Observed} - tf_{estimated})^2}{\sum_{i=1}^n (tf_{Observed} - tf_{mean})^2} \right] \quad (26)$$

The statistical results of the developed models are given in Tabs. 6-8.

Tab. 6.

Statistics for the SARIMA model

SARIMA				
Test	MAE	MAPE	RMSE	R ²
Right lane	8.02	15.43	10.85	0.89
Left lane	5.58	39.73	8.36	0.85

Tab. 7.

Training and test statistics for the DE models

Test	Linear				Semi-quadratic				Power			
	MAE	MAPE	RMSE	R ²	MAE	MAPE	RMSE	R ²	MAE	MAPE	RMSE	R ²
Right lane	8.06	15.06	10.19	0.91	8.06	15.06	10.23	0.91	8.02	14.95	10.19	0.91
Left lane	6.03	38.09	8.67	0.88	6.04	38.55	8.67	0.88	6.35	37.18	9.16	0.87

Tab. 8.

Training and test statistics for the ABC models

Test	Linear				Semi-quadratic				Power			
	MAE	MAPE	RMSE	R ²	MAE	MAPE	RMSE	R ²	MAE	MAPE	RMSE	R ²
Right lane	8.06	15.06	10.19	0.91	8.03	14.87	10.19	0.91	8.03	14.89	10.17	0.91
Left lane	6.03	38.08	8.67	0.88	6.04	38.12	8.67	0.88	6.35	36.93	8.52	0.87

When the developed models were statistically compared, all the models showed performances similar to each other. MAPE and R² are scale-independent measures and generally used to compare forecasting models [32]. The models predicted the traffic flow with a lower error for the right lane where the traffic flow was high, while the models for the left lane had a higher error level. The optimized power model with the ABC algorithm especially showed the best performance. MAPE and RMSE values of the power model were lower than those of the SARIMA, DE and other ABC models. Therefore, the power model is the most

appropriate model for right and left lanes. The predictions of the power model, as presented in Fig. 4, show that the power model captures the trends of traffic flow rates throughout the day.

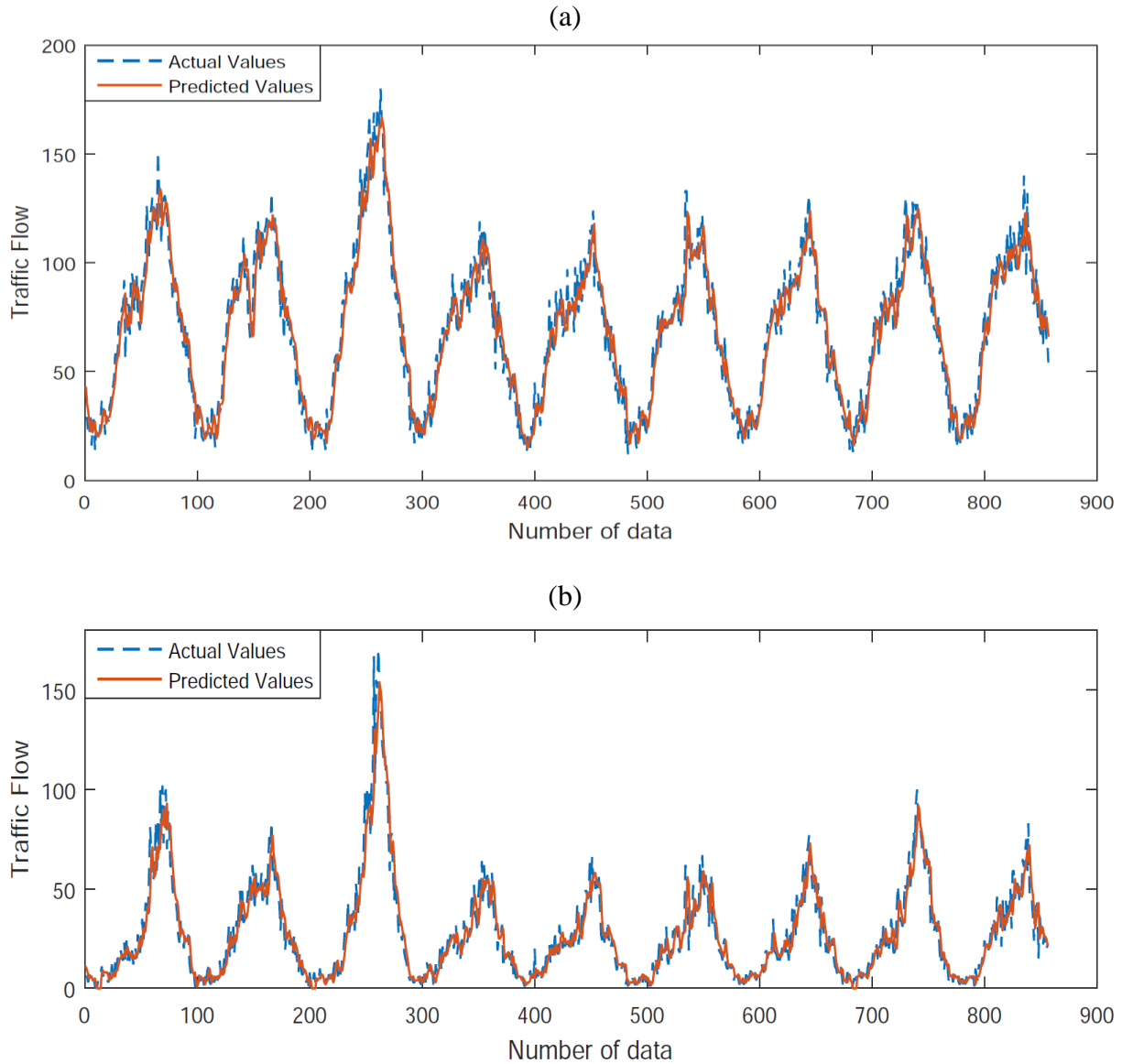


Fig. 4. The power model's predicted and actual values: (a) right lane, (b) left lane

6. CONCLUSION

Short-term traffic forecasting has become an important issue, along with technologies used in cities for traffic management, in recent years. It is now easier to estimate future traffic with different approaches, which in turn has made managerial decisions more efficient. Depending on the increasing number of motor vehicles in Turkey, advanced traffic management is especially needed in major cities. Kırkkale, located in the Turkish interior, is an important point linking 35 cities to each other. Thus, the data on this city, with its high traffic intensity, were used in this study. Traffic prediction models, which can be functionally helpful to intelligent transportation systems that likely to be installed in these areas, were developed by

using various methods. In the development of these models, 15-min traffic flows obtained from the D-200 highway were used. Separate models for both left and right lanes were developed, as traffic flow measurements were separately performed for both lanes. According to the statistical results of the developed models, they all produced consistent and useful results. However, it was observed that there were slight differences between the models. Models showed better performance for the right lane, which had heavier vehicles and lower speeds. Especially in terms of MAPEs and RMSEs, the power model gave the best performance with the lowest error rate. Therefore, the power model, when optimized with the ABC algorithm, showed the closest results to the observation. For this reason, this model can be used for short-term traffic forecasting in future studies. Traffic counts could be made for two-month period to take weather changes into account [33]. It would also be useful to investigate the effect of the size of the data set on model prediction performances after applying the counting process across the year.

Acknowledgements

The authors would like to thank Kırıkkale University's Scientific Research Project Funding (KKU BAP) for their financial support [Project No. KKUBAP2016/019].

References

1. Ahmed M.S., A.R. Cook. 1979. "Analysis of freeway traffic time-series data by using Box-Jenkins techniques". *Transportation Research Record* 722: 1-9.
2. Chrobok R., O. Kaufmann, J. Whale, M. Schreck Enberg. 2004. "Different methods of traffic forecast based on real data". *European Journal of Operational Research* 3, 558-568.
3. Zhong M., S. Sharma, P. Lingras. 2005. "Short-term traffic prediction on different types of roads with genetically designed regression and time delay neural network models". *Journal of Computing in Civil Engineering* 19(1): 94-103.
4. Vlahogianni E.I., M.G. Karlaftis, J.C. Golias. 2005. "Optimized and meta-optimized neural networks for short-term traffic flow prediction: a genetic approach". *Transportation Research Part C: Emerging Technologies* 13(3): 211-234.
5. Jiang X., H. Adeli, H.M. Asce. 2005. "Dynamic wavelet neural network model for traffic flow forecasting". *Journal of Transportation Engineering* 131(10): 771-779.
6. Lam W.H.K., Y.F. Tang, M. Tam. 2006. "Comparison of two non-parametric models for daily traffic forecasting in Hong Kong". *Journal of Forecasting* 192: 173-192.
7. Zhang Y., Z. Ye. 2008. "Short-term traffic flow forecasting using fuzzy logic system methods". *Journal of Intelligent Transportation Systems* 12(3): 102-112.
8. Shekhar S., B.M. Williams. 2008. "Adaptive seasonal time series models for forecasting short term traffic flow". *Journal of the Transportation Research Board*. 2024(1): 116-125.
9. Castro-Neto M., Y-S. Jeong, M-K. Jeong, L.D. Han. 2009. "Online-SVR for short-term traffic flow prediction under typical and atypical traffic conditions". *Expert Systems with Applications* 36(3): 6164-6173.
10. Zargari S.A., S.Z. Siabil, A.H. Alavi. 2009. "A computational intelligence-based approach for short-term traffic flow prediction". *Expert Systems* 29(2): 124-142.

11. Hong W.C., Y. Dong, F. Zheng, C.Y. Lai. 2011. "Forecasting urban traffic flow by SVR with continuous ACO". *Applied Mathematical Modelling* 35(3): 1282-1291.
12. Xia J., W. Huang, J. Guo. 2012. "A clustering approach to online freeway traffic state identification using ITS data". *KSCE Journal of Civil Engineering* 16(3): 426-432.
13. Tchakian T.T., B. Basu, M. O'Mahony. 2012. "Real-time traffic flow forecasting using spectral analysis". *IEEE Transactions on Intelligent Transportation Systems* 13(2): 519-526.
14. Guo F., R. Krishnan, J. Polak. 2013. "A computationally efficient two-stage method for short-term traffic prediction on urban roads". *Transportation Planning and Technology* 36(1): 62-75.
15. Doğan E., A.P. Akgüngör, T. Arslan. 2016. "Estimation of delay and vehicle stops at signalized intersections using artificial neural network". *Engineering Review* 36(2): 157-165.
16. Dell'Orco M., Ö. Başkan, M. Marinelli. 2013. "A harmony search algorithm approach for optimizing traffic signal timings". *PROMET - Traffic and Transportation* 25(4): 349-358.
17. Dell'Orco M., Ö. Başkan, M. Marinelli. 2013. "Artificial bee colony-based algorithm for optimising traffic signal timings". *Advances in Intelligent Systems and Computing* 223: 327-337.
18. Yunrui B., D. Srinivasan, L. Xiaobo, Z. Sun, W. Zeng. 2014. "Type-2 fuzzy multi intersection traffic signal control with differential evolution optimization". *Expert Systems with Applications* 41: 7338-7349.
19. Lin F. 2010. "Using differential evolution for the transportation problem with fuzzy coefficients". In: *International Conference on Technologies and Applications of Artificial Intelligence*: 299-304.
20. Kuzhel N., A. Bieliatynskiy, O. Prentkovskis, I. Klymenko, Š. Mikaliūnas, O. Kolganova, S. Kornienko, V. Shutko. 2013. "Methods for numerical calculation of parameters pertaining to the microscopic following-the-leader model of traffic flow: using the fast spline transformation". *Transport* 28(4): 413-419.
21. Lebkowski A. 2018. "Design of an Autonomous Transport System for Coastal Areas". *Transnav-International Journal On Marine Navigation And Safety Of Sea Transportation* 12(1): 117-124.
22. Ogiela L., R. Tadeusiewicz, M. Ogiela. 2006. "Cognitive analysis in diagnostic DSS-type IT systems". In: *Eighth International Conference on Artificial Intelligence and Soft Computing (ICAISC 2006)*. Zakopane, Poland. Jun 25-29, 2006. *Artificial Intelligence and Soft Computing - ICAISC 2006*: 962-971. Book series: *Lecture Notes in Computer Science* 4029.
23. Ogiela L., R. Tadeusiewicz, M. Ogiela. 2006. "Cognitive computing in intelligent medical pattern recognition systems". In: *International Conference on Intelligent Computing (ICIC)*. Kunming, P.R. China. 16-19 August 2006. Edited by: Huang, D.S., Li, K., Irwin, G.W. *Intelligent Control and Automation*: 851-856. Book series: *Lecture Notes in Control and Information Sciences* 344.
24. Ogiela M., R. Tadeusiewicz, L. Ogiela. 2005. "Intelligent semantic information retrieval in medical pattern cognitive analysis". In: *International Conference on Computational Science and Its Applications (ICCSA 2005)*. Singapore, Singapore. 9-12 May 2005. Edited by: Gervasi, O., Gavrilova, M.L., Kumar V., et al. *Computational Science and Its Applications - ICCSA 2005 Vol. 4*: 852-857. Book series: *Lecture Notes in Computer Science* 3483.

25. Sierpinski G., I. Celinski, M. Staniek. 2015. "The model of modal split organisation in wide urban areas using contemporary telematic systems". *3rd International Conference Transportation Information Safety*. Wuhan, China, Jun 25-28, 2015. P: 277-283.
26. Smierzchalski R., A. Lebkowski. 2003. "Moving objects in the problem of path planning by evolutionary computation". 6th International Conference on Neural Networks and Soft Computing. Zakopane, Poland. Jun 11-15, 2002. *Neural Networks And Soft Computing. Advances In Soft Computing*: 382-387.
27. Tadeusiewicz R., L. Ogiela, M. Ogiela. 2008. "The automatic understanding approach to systems analysis and design". *International Journal of Information Management* 28(1): 38-48.
28. Box G.E.P., G.M. Jenkins, G.C. Reinsel, G.M. Ljung. 2015. *Time Series Analysis: Forecasting and Control*. Hoboken, NJ: John Wiley & Sons.
29. Storn R., K. Price. 1997. "Differential evolution - a simple and efficient adaptive scheme for global optimization over continuous spaces". *Journal of Global Optimization* 11(4): 341-359.
30. Mallipeddi R., P. Suganthan, Q. Pan, M. Tasgetiren. 2011. "Differential evolution algorithm with ensemble of parameters and mutation strategies". *Applied Soft Computing* 11: 1679-1696.
31. Karaboga D. 2005. "An idea based on honey bee swarm for numerical optimization". *Technical Report - Tr06 Vol. 200*. Kayseri: Computer Engineering Department, Engineering Faculty, Erciyes University.
32. Hyndman R.J., A.B. Koehler. 2006. "Another look at measures of forecast accuracy". *International Journal of Forecasting* 22(4): 679-688.
33. Calvert S.C., M. Snelder. 2016. "Influence of Weather on Traffic Flow: an Extensive Stochastic Multi-effect Capacity and Demand Analysis". *Transport\Transporti Europei* 60(3): 1-24.

Received 07.03.2018; accepted in revised form 29.05.2018



Scientific Journal of Silesian University of Technology. Series Transport is licensed under a Creative Commons Attribution 4.0 International License