



Biomarker Characteristics of Triassic Kasımlar Formation; Akseki–Anamas Platform, Western Taurus, Turkey

Orhan Ozcelik^{1*}, Mehmet Altunsoy¹, Nazan Yalcin Erik², Selin Karadirek¹, Neslihan Unal¹

¹Department of Geological Engineering, Akdeniz University, 07058 Antalya, Turkey (*oozcelik@akdeniz.edu.tr)

²Department of Geological Engineering, Cumhuriyet University, 58140 Sivas, Turkey

Abstract The Triassic Kasımlar Formation units located are composed of bituminous shale, sandstone and limestone in the Akseki–Anamas Platform (Western Taurus, Turkey). This study evaluates the biomarker parameters calculated using the 191 triterpane and m/z 217 sterane distributions obtained thru GC-MS analysis performed on the surface samples. Sterane distribution is $C_{29} > C_{27} > C_{28}$ where C_{29} and C_{27} steranes show bimodal distribution. According to this distribution, relative abundance of C_{28} shows green alga and diatom and relative abundance of C_{27} indicates red algae and planktons while C_{29} indicates higher plants, green and red algae. The dominant sterol is C_{29} in the majority of the higher plants. In spite of that analyzed samples do not have terrestrial characteristics, C_{29} ratios are somewhat higher than the C_{27} ratios (C_{27} ; 38%, C_{29} ; 42%). And this means petroleum originated from marine carbonate rich source rocks might be rich in C_{29} which shows algal composition. The $C_{31} 17\alpha(H)$, $21\beta(H)$ -30 Homohopane (22R)/ C_{30} ratio is 1.59, pointing carbonate–marine shale and marls. Similarly, the existence and relatively abundance of C_{29} hopane, the C_{29}/C_{30} ratio (>0.6), the C_{22}/C_{21} tricyclic terpane (0.5), the C_{24}/C_{23} tricyclic terpane (0.43) and the $Ts/Ts+Tm$ (0.46) ratios all point to a carbonate lithology. The Diasterane/Sterane ratio is quite low (0.39) which supports all these findings. The $20S/(20S+20R)$ ratio (0.95) and the $\beta\beta/(\beta\beta+\alpha\alpha)$ sterane ratio (0.53) indicate maturation. $\beta\beta/(\beta\beta+\alpha\alpha)$ sterane and $20S/(20S+20R)$ ratios show maturity. The existence of C_{30} sterane points to a marine environment supported by the Sterane/Hopane (1.24) ratio. Accordingly the major part of organic matter could originate from marine material although some terrestrial input.

Keywords Biomarker, Kasımlar Formation, Organic Geochemistry, Isparta Angle, Akseki-Anamas Platform

Introduction

The study area is located in the western part of the Taurus Belt (SW Turkey), known as “the Isparta Angle” (Figure 1). This region exhibits a complex structure involving two autochthonous units surrounded with the allochthonous complexes. The autochthonous units are parts of the Beydağları micro-plate to the west and of the Anatolian micro-plate to the east (Anamas-Akseki platform). The Anamas-Akseki platform represents the SW margin of the Anatolian micro-plate located to the NE of the Isparta Angle. These platform is also composed of shallow marine carbonates and clastic sediments from Triassic time up to Eocene.

In these units, organic materials are known in the Kasımlar Formation (Figure 2-3) . This formation consists of dark-grey bituminous shale and bedded blackish reefal limestones. Previous studies of this region have defined and described the rock units, sedimentary associations, stratigraphy, tectonics and petroleum geology. General geological investigations and reports have been presented by [5-9], who studied the sedimentological character



and tectonics of the study area and environs. Petroleum-geological studies have also been carried out; important ones include the works of [10-13].

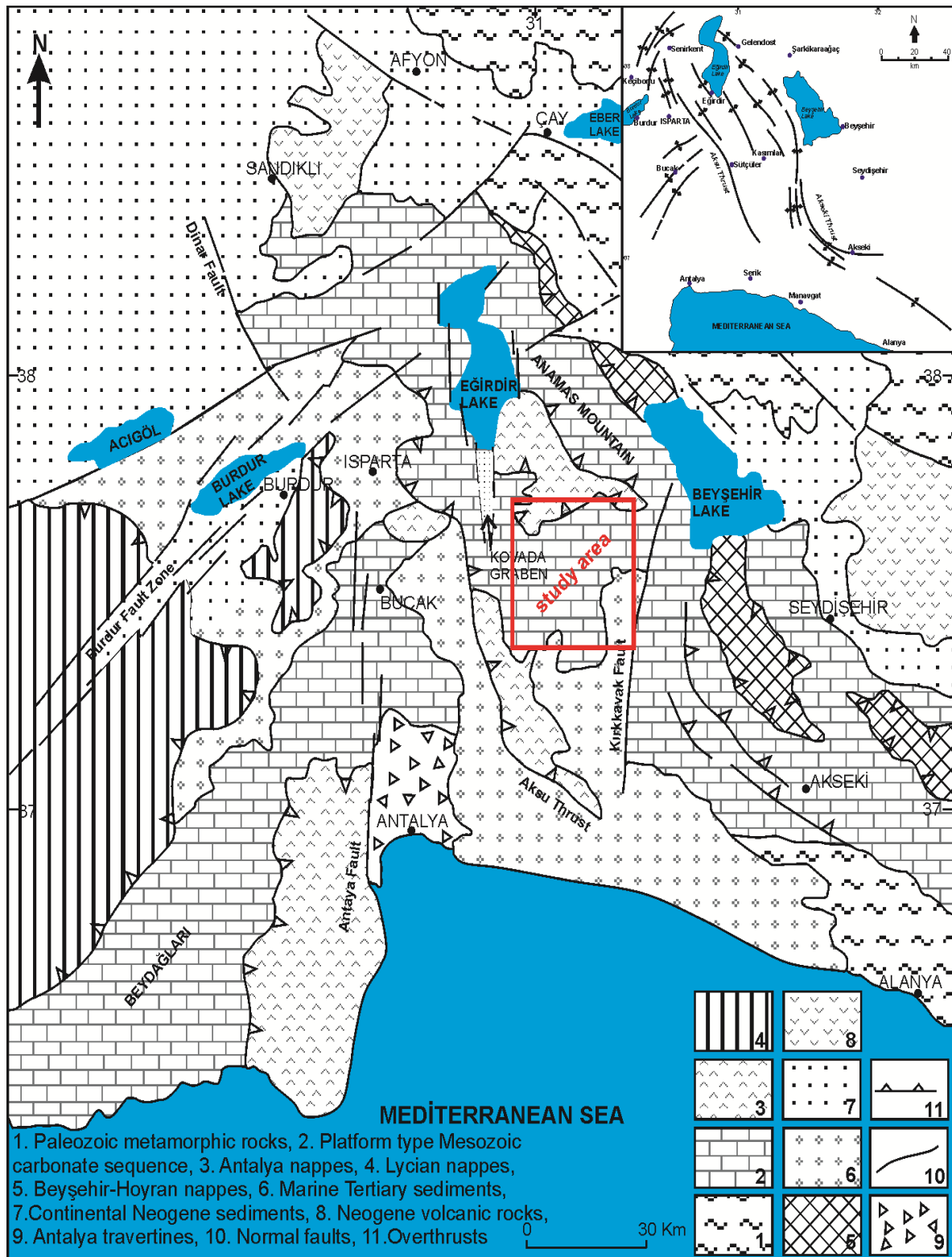


Figure 1: Simplified geological map of the Isparta Angle and surrounding areas (modified from [1-4])

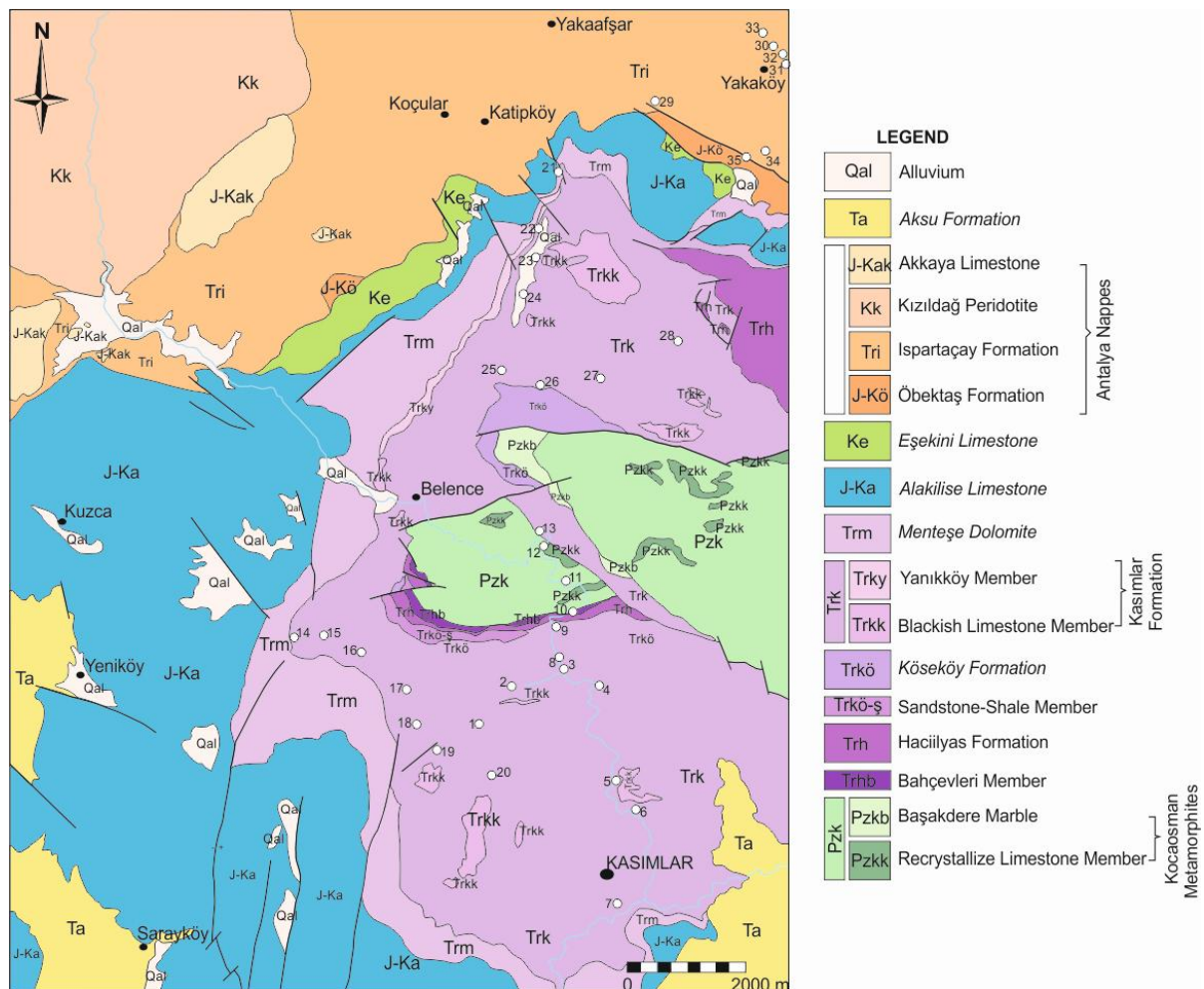


Figure 2: Geological map of the investigated area [4]

Materials and Methods

For biomarker analyses, composite sample was extracted for approximately 40 h using dichloromethane (CH_2Cl_2) in an ASE 300 (accelerated solvent extraction). The saturated fractions were analyzed using an Agilent 7890A/5975C gas chromatography-mass spectrometry (GC-MS) equipment. Steranes and triterpanes were calculated by measuring peak heights in the m/z 217, m/z 191 chromatograms, respectively. The samples were analyzed in the laboratories of the Turkish Petroleum Corporation (TPAO; Turkey, Ankara) Research Group.

Result and Discussion

This study evaluates the biomarker parameters calculated using the 191 triterpane and m/z 217 sterane distributions (Figure 4) obtained through GC-MS analysis performed on the surface samples. Sterane distribution is $C_{29} > C_{27} > C_{28}$ where C_{29} and C_{27} steranes show bimodal distribution (Figure 4, Table 1). According to this distribution, relative abundance of C_{28} shows green algae and diatom and relative abundance of C_{27} indicates red algae and planktons while C_{29} indicates higher plants, green and red algae. The dominant sterol is C_{29} in the majority of the higher plants. In spite of that analyzed samples do not have terrestrial characteristics, C_{29} ratios are somewhat higher than the C_{27} ratios (C_{27} ; 38%, C_{29} ; 42%). And this means petroleum originated from marine carbonate rich source rocks might be rich in C_{29} which shows algal composition.

The $C_{31} 17\alpha$ (H), 21β (H)-30 Homohopane (22R)/ C_{30} ratio is 0.25, pointing carbonate – marine shale and marls. Similarly, the existence and relatively abundance of C_{29} hopane, the C_{29}/C_{30} ratio (>0.6), the C_{22}/C_{21} tricyclic terpane (0.5), the C_{24}/C_{23} tricyclic terpane (0.43) and the T_s/T_s+T_m (0.46) ratios all point to a carbonate lithology. The Diasterane/Sterane ratio is quite low (0.39) which supports all these findings.



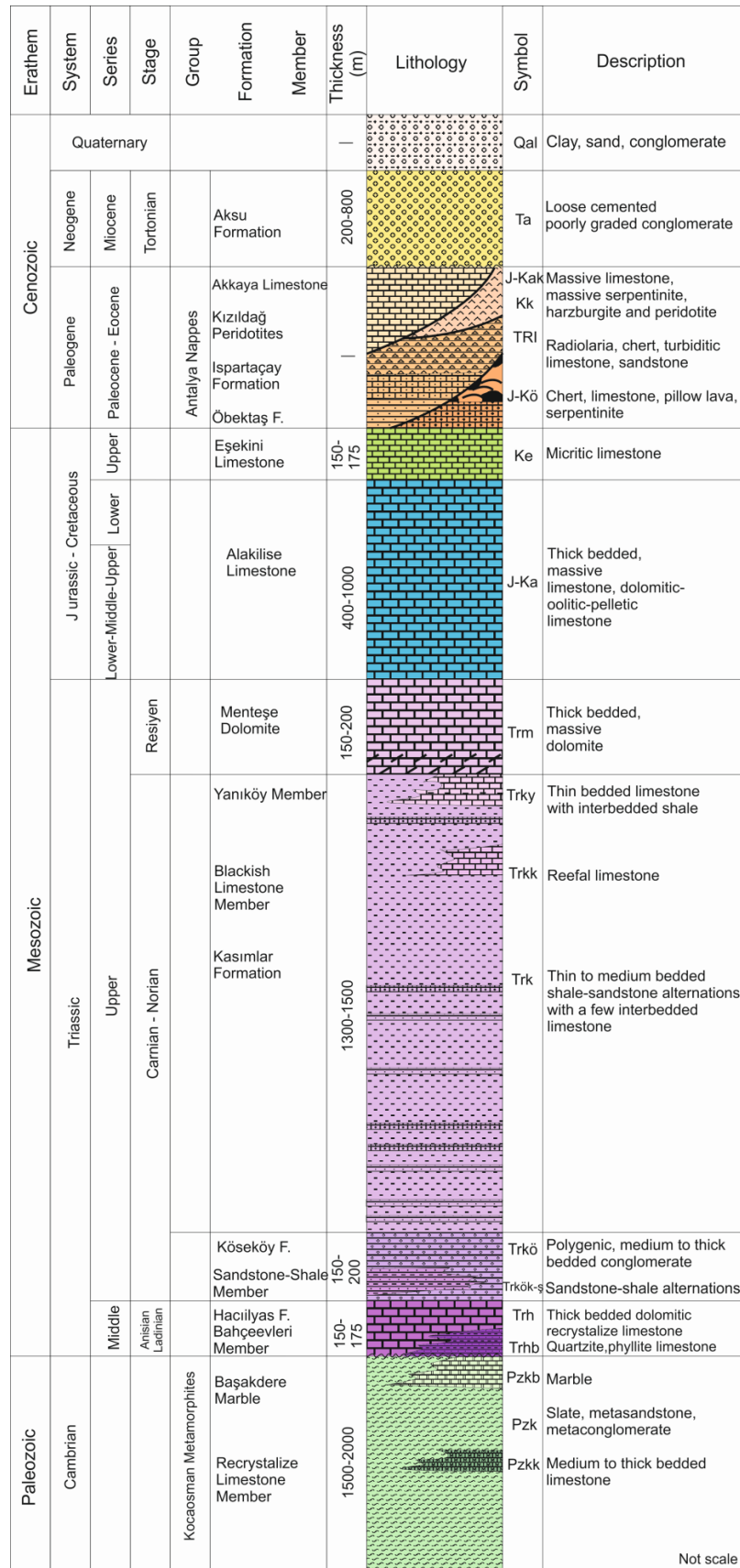


Figure 3: Generalized stratigraphic succession in the investigated area [4]



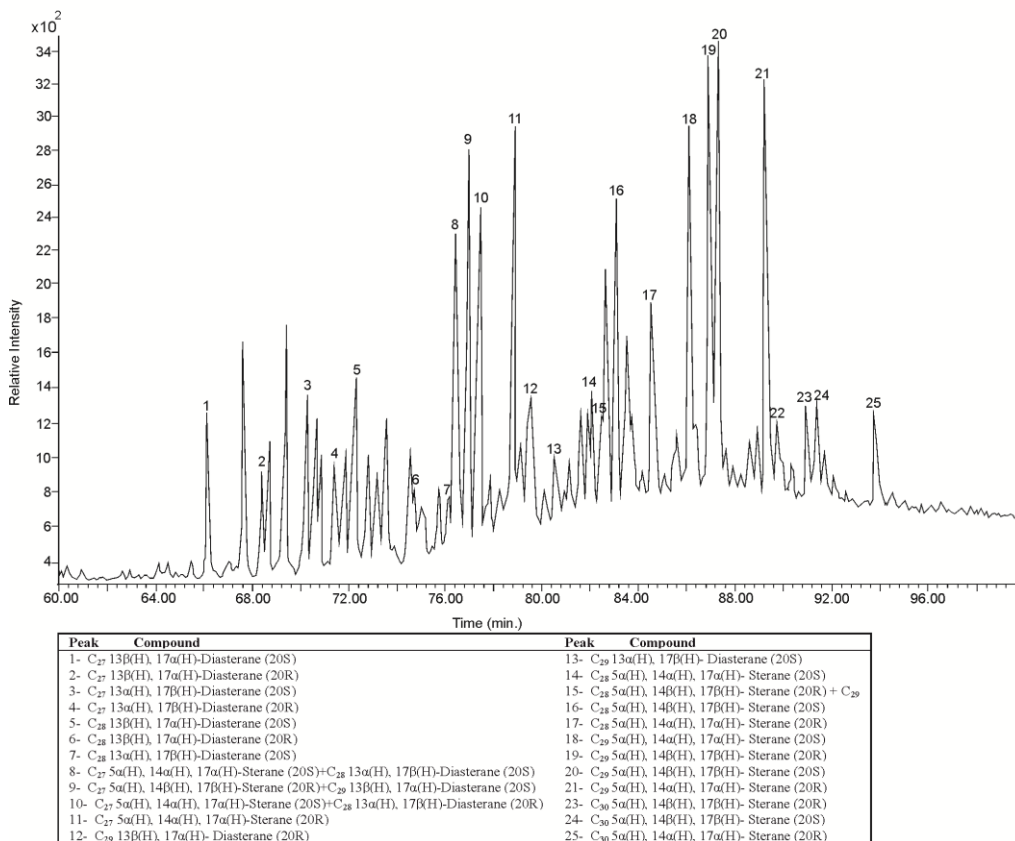
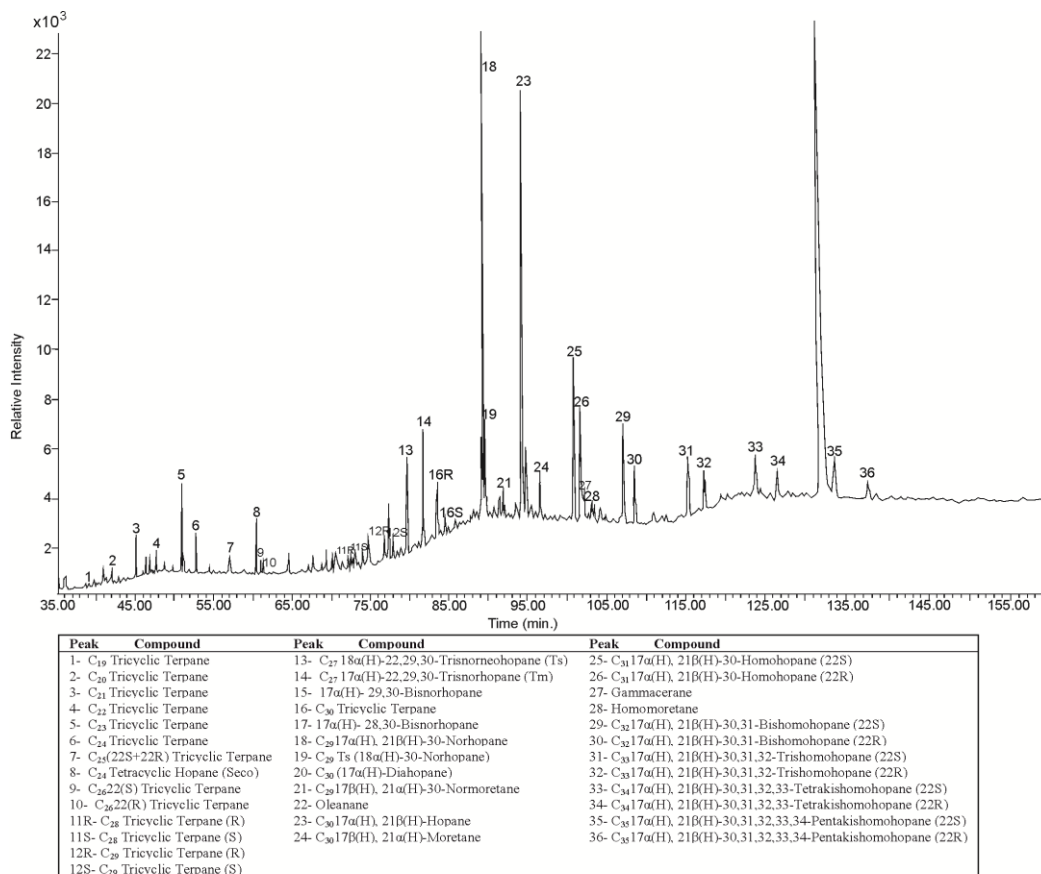


Figure 4: Distributions of m/z 191 (hopanes) and m/z 217 (steranes) in selected composite sample

The 20S/(20S+20R) sterane and $\beta\beta/(\beta\beta+\alpha\alpha)$ sterane increase with maturity equilibrium values of 0.55 and 0.70, respectively [14-15]. 20S/(20S+20R) ratio (0.95) and the $\beta\beta/(\beta\beta+\alpha\alpha)$ sterane ratio (0.53) indicate maturation. Moretane is thermally less stable than hopane and the moretane/hopane ratio decreases with maturity [16-17]. Very low moretane/hopane ratio (0.10), high values of the Ts/(Ts+Tm) ratio indicate maturity. The existence of C₃₀ sterane points to a marine environment supported by the Sterane/Hopane (1.24) ratio. Accordingly the major part of organic matter could originate from marine material although there are terrestrial input.

Table 1: Biomarker compositions based on m/z 191, 217 mass chromatograms and calculated parameters for composite sample from the Kasımlar Formation

Parameters	Composite sample
Sterane/Hopane Ratio	1.24
C ₃₂ 22S/(22S+22R) Ratio	0.61
Moretane/Hopane Ratio	0.1
C ₂₉ /C ₃₀ Hopane Ratio	1.15
Ts/(Ts+Tm) Ratio	0.46
C ₂₄ /C ₂₃ Tricyclicterpane Ratio	0.43
Gammacerane Index	1.41
Diasterane/Sterane Ratio	0.39
$\beta\beta/(\beta\beta+\alpha\alpha)$ Sterane Ratio	0.53
% C ₂₇	38.04
% C ₂₈	19.97
% C ₂₉	41.99
20S/20S+20R	0.95
C ₂₈ /C ₂₉ Sterane Ratio	0.63
C ₃₁ Hopane (R)/C ₃₀ Hopane Ratio	0.25
C ₂₄ Tetracyclic terpane/C ₃₀ Hopane Ratio	0.13
C ₂₅ /C ₂₆ Tricyclic terpane Ratio	0.37
C ₂₄ /C ₂₆ Tricyclic terpane Ratio	1.12
C ₃₅ /C ₃₁ -C ₃₅ Hopane Ratio	0.07
Norhopane/Hopane Ratio	6.33
C ₂₂ /C ₂₁ Tricyclic terpane Ratio	0.5
C ₂₇ /C ₂₉ Terpane ratio	0.38
C ₂₃ /C ₂₃₊ C ₃₀ Hopane Ratio	0.68

Conclusion

The distribution values of m/z 191 triterpane and m/z 217 sterane of the Triassic bituminous shale in Kasımlar Formation were determined by GC-MS. According to the C₂₇, C₂₈ and C₂₉ sterane distribution, it can be observed that the dominant sterol is C₂₉ in majority of the higher plants. C₂₉ ratios are somewhat higher than the C₂₇ ratios (C₂₇; 38%, C₂₉; 42%). Petroleum originating from marine carbonate rich source rocks might be high in C₂₉ which shows algal composition. The C₃₁ 17 α (H), 21 β (H)-30 Homohopane (22R)/C₃₀ ratio C₂₉ hopane, the C₂₉/C₃₀ ratio, the C₂₂/C₂₁ tricyclic terpane, the C₂₄/C₂₃ tricyclic terpane and the Ts/Ts+Tm indicate carbonate-marine shale and marls lithology. $\beta\beta/(\beta\beta+\alpha\alpha)$ sterane and 20S/(20S+20R) sterane ratios show maturity.

Acknowledgement

The authors would like to thank Research Unit of the Akdeniz University, General Directorate of Mineral research and Exploration (MTA) (Turkey) and Turkish Petroleum Corporation (TPAO) (Turkey) foundations.



References

- [1]. Şenel, M. 1984. Discussion on the Antalya nappes. In Geology of Taurus Belt, Tekeli O, Göncüoğlu MC, editors. Proceedings of International Symposium on the Geology of the Taurus Belt, 1983. *Mineral Research and Exploration Institute (MTA) of Turkey Publication*, 41–52.
- [2]. Poisson, A., Akay, E., Dumont, J. F., & Uysal, S. (1984). The Isparta Angle: A Mesozoic paleorift in the Western Taurides. In: Tekeli, O. & Göncüoğlu, M. C. (eds.) International Symposium on Geology of the Taurus Belt (Proceedings Book), Ankara, Turkey, September 26–29, pp. 11–26.
- [3]. Yağmurlu, F. & Şentürk, M. (2005). The actual tectonic structure of southwest of Anatolia. Turkey Quaternary Symposium, TURQUA 5, pp. 55-61 (in turkish).
- [4]. Hokerek, S. Unal, N., Altunsoy, M., Ozcelik, O. & Kuscu, M. (2014). Organic facies characteristics of the Triassic Kasımlar Formation, Anamas-Akseki Platform, western Taurides, Turkey. *Energy Procedia*, 150-157.
- [5]. Özgül, N. (1976). Some geological aspects of the Taurus orogenic belt (Turkey). *Bulletin of the Geological Society of Turkey*, 19:65-78 (in turkish).
- [6]. Gutnic, M., Monod, O., Poisson, A., & Dumont, J. F. 1979. Geologie des Taurides occidentales (Turquie). *Mem. Soc. Geol. France*, 137:112.
- [7]. Flecker, R., Ellam, R. M., Muller, C., Poisson, A., Robertson, A. H. F. & Turner, J. (1998). Application of Sr isotope stratigraphy and sedimentary analysis to the origin and evolution of the Neogene basins in the Isparta Angle, southern Turkey. *Tectonophysics*, 298:83–101.
- [8]. Flecker, R. Poisson, A. & Robertson, A. H. F. (2005). Facies and palaeogeographic evidence for the Miocene evolution of the Isparta Angle in its regional eastern Mediterranean context. In: Kelling, G., Robertson, A. H. F. and Van Buchem, F. (eds), Cenozoic Sedimentary Basins of South Central Turkey. *Sedimentary Geology*, 173:277–314.
- [9]. Poisson, A., Yağmurlu, F., Bozcu, M. & Senturk, M. 2003. New insights on the tectonic setting and evolution around the apex of the Isparta Angle (SW Turkey). *Geological Journal*, 38:257–282.
- [10]. Altunsoy, M. 1999. Organic geochemical characteristics of the Miocene Yazır limestones in the Southern Isparta. *Geological Bulletin of Turkey*, 42:51-62 (in turkish).
- [11]. Demirel, I. H., Günay, Y., & Yurtsever, T. S. (2001). Evaluation of petroleum source rocks on the coastal area of the Western Taurus region, Turkey. *Energy Sources*, 23:541–552.
- [12]. Demirel, I. H., Günay, Y. & Yurtsever, T. Ş. (2002). Evaluation of hydrocarbon source rock potential from well data on the Elmalı Nappes, Western Taurus Region, Turkey. *Energy Sources*, 24: 461-470.
- [13]. Ozcelik, O., Acar, F., Altunsoy, M., & Yalcin Erik, N. (2005). Organic Facies Characteristics of Lower – Middle Miocene Sediments in the Korkuteli (Antalya) – Bucak (Burdur) Region. 15th International Petroleum and Natural Gas Congress and Exhibition of Turkey, p.96.
- [14]. Seifert, W. K. & Moldowan, J. M. (1986). Use of biological markers in petroleum exploration. In: Johns, R. B., editor. *Methods Geochemistry Geophys.*, Amsterdam: Elsevier, p. 261–90.
- [15]. Waples, D. W. & Machihara, T. (1991). *Biomarkers for Geologists—A Practical Guide to the Application of Steranes and Triterpanes in Petroleum Geology*. vol. 9. Tulsa, Oklahoma, USA.
- [16]. Seifert, W. K. & Moldowan, J. M. (1980). The effect of thermal stress on source-rock quality as measured by hopane stereochemistry. *Physical Chemical Earth*, 12: 229–37.
- [17]. Peters, K .E., Walters, C. C. & Moldowan, J. M. (2005). *The Biomarker Guide. II. Biomarkers and Isotopes in Petroleum Systems and Earth History*. 2nd ed. Cambridge University Press.

