

# Comparative Study of CdS Nano Films Deposited by Chemical Bath and Close Spaced Sublimation Techniques

Zamran Rabeel<sup>1</sup>, Murrawat Abbas<sup>2</sup>, Maryam Basit<sup>1</sup>, Nazar Abbas Shah<sup>3</sup>, Iqbal Ahmad<sup>1</sup> and Muhammad Sajjad Ul Hassan<sup>1</sup>

<sup>1</sup> Lecturer Punjab Higher Education Department Lahore

<sup>2</sup> Federal Urdu University of Arts & Sciences Islamabad, Pakistan

<sup>3</sup> Department of Physics, Thin Film Technology Research Laboratory, COMSATS Institute of Information Technology, Islamabad, Pakistan  
Email: [nazar\\_abbas@comsats.edu.pk](mailto:nazar_abbas@comsats.edu.pk)

**Abstract.** Thin films of Cadmium Sulfide (CdS) are deposited on microscope glass slides by two techniques, chemical bath deposition (CBD) and close spaced sublimation (CSS). Cadmium Sulfide thin films fabricated by both procedures are characterized by spectrophotometer, scanning electron microscopy (SEM) and X-ray diffraction (XRD). Optical analysis of CdS thin films shows changes in transmittance, refractive Index and energy band gap by using two different techniques. XRD and SEM results show CdS thin film samples with better crystalline structure for close spaced sublimation technique, and grain size is also found different for these two methods. CdS thin films fabricated by any of these two methods are good window layers with small thickness and suitable for CdTe/CdS/ITO based solar cells.

**Keywords:** Cadmium sulfide, close spaced sublimation, chemical bath deposition morphological, optical, structural study.

## 1 Introduction

A II-VI semiconductor compound Cadmium Sulfide (CdS) has much importance because of its so many applications in several heterojunction photovoltaic thin film devices of CdTe, copper indium gallium diselenide ( $\text{Cu}(\text{In}_x\text{Ga}_{1-x})\text{Se}_2$ ), or copper Indium Gallium sulfide (CIGS) and solar cells. Many other devices in the fields of electronics, optical and infrared are also fabricated by using CdS [1-3]. The CdS is a suitable n-type material, which can be fabricated by a variety of fabrication techniques like sol gel technique [4], close spaced sublimation (CSS), chemical bath deposition (CBD), thermal evaporation, chemical vapor deposition, molecular beam epitaxy and spray pyrolysis. Each and every deposition process provides different optical, structural, electrical and morphological properties [5-10].

First solar cell has reported CdS deposited by high rate vapor transport deposition (HRVTD). CdS is called window layer due to its higher rate of light transmission [11-14]. CdS thin films are very suitable for so many other semiconductor devices and radiation detectors. CdS thin films with wide band gap are highly used for photovoltaic devices. Since CdS is used as window layer in solar cell so it should be fabricated very thin, high amount of light should pass through CdS and be absorbed in CdTe. The CdS thin film must be continuous to reduce the effect of short circuit in the cell. The CdS thin films deposited by CBD can fulfill these requirements. So the thickness of CdS has much importance for the high efficiency of solar cell [15-17]. CdS (CBD) thin films are grown by Cadmium Chloride, Ammonium Nitrate, and Potassium Hydroxide after heating to a specific temperature Thiourea added to start the fabrication process [18-20].

CBD is a very easy process for the fabrication of CdS thin films on ITO glass. For the fabrication of thin film solar cell, one needs a very thin film up to (60 -80) nm. It is a very suitable process especially for solar cell point of view. It is a process in which substrate is placed in a hot chemical solution stirring vigorously for specific time, positive and negative ions will reach and meet on the substrate and thin

film is grown. The advantage of this technique is that neither vacuum and nor very high temperature is required for CBD [5, 21].

CdS thin films fabricated by the CSS are also another moderate temperature fabrication technique in a vacuum chamber. More than 20 % efficiency has been achieved by using CdTe/CdS heterojunction thin film solar cell by this technique. CSS is moderate temperature procedure so it provides in some cases better results [22-23]. The CSS technique is one of the techniques that have produces encouraging results [15] mainly because it is simple deposition apparatus and high transport efficiency and deposition can be done in low vacuum at moderate temperatures. There is minimum use of material in the CSS system as compared to other methods. As the substrate is close to the source materials in the CSS technique, roughness increases in the thin films and has high absorption, which makes it suitable material for solar cell applications. The CSS has a disadvantage that one can not introduce thickness monitor.

In this research work optical, structural and surface properties of CdS thin films by both methods have been studied by XRD, SEM and UV-VIS-IR Spectrophotometer. The objective of this investigation is to study two different techniques CBD and CSS and compare the properties of very promising compound material CdS thin films for the solar cell applications. We found that CBD films were more transparent and thinner but CSS films were less transparent due to surface roughness.

## 2 Experimental

Thin films of CdS were deposited on microscope glass sides and ITO glass slides. Two fabrication procedures were used for CdS deposition for the first time in our lab. Firstly CdS thin films were fabricated by CBD technique. Fabrication of thin film for solar cells, we need a very thin film up to (60-80) nm. In this process substrate was placed in a hot chemical solution stirring vigorously for 10 to 30 minutes with magnetic stirring at 3 Hz at 75 °C by combining positive and negative ions on the substrate thin film. The advantage was that neither vacuum and nor very high temperature is required for CBD. The chemical solutions of (0.02 M) about 80 ml solution of Cadmium Chloride ( $\text{CdCl}_2$ ), (1.5 M) about 80 ml solution of Ammonium Nitrate ( $\text{NH}_4\text{NO}_3$ ) and (0.5 M) about 200 ml solution of Potassium Hydroxide (KOH) were made in a beaker. When temperature reached at 75°C thiourea of (0.2 M) about 80 ml solution was added to start fabrication. The films were fabricated with magnetic stirring of 3 Hz for 10-30 minutes at 75° C. as described in [5].

CdS (CSS) fabrication was carried out in a vacuum chamber of approximately  $4 \times 10^{-1}$  mbar. The CdS Sigma Aldrich powder 99.999% pure was used. Substrate temperature was maintained at 400 °C and source temperature was in between (500-600) °C. Source material was heated by 1000 W halogen lamp and substrate was heated by a 500 W halogen lamp. Time of deposition was about (3-5) minutes as shown in Fig.2. The film was fabricated after collected after cooling.

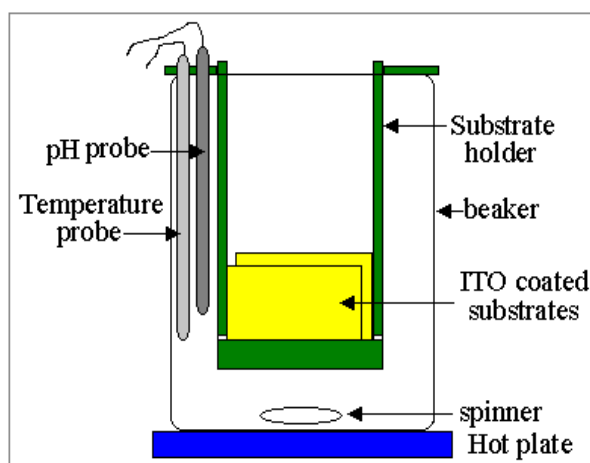


Figure 1. Schematic drawing of CBD set-up

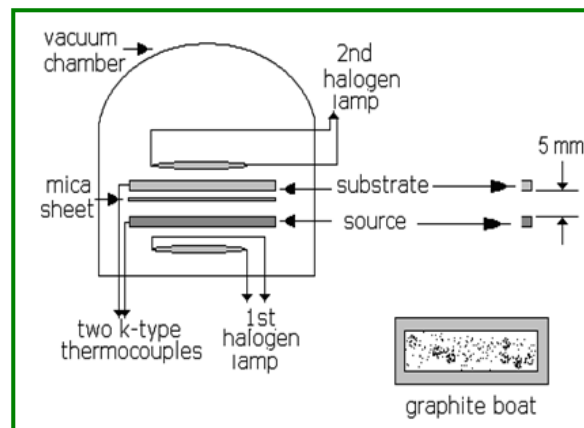


Figure 2. CSS arrangement designed at CIIT

### 3 Comparative Analysis of Optical Properties of CdS Thin Films Deposited by Chemical Bath Deposition and Close Spaced Sublimation

Spectrophotometer (UV-VIS-IR) was used to study optical properties of CdS (CBD) and CdS (CSS) thin films. The transmission for (CBD) films starts after 300 nm wavelength but in case of (CSS) transmission starts after 500 nm as shown in figure 4. So in CdS (CSS) blue portion of light was absorbed. Transmission increased especially above 550 nm wavelength region. In the region of 600 to 800 nm the transmission was more than 70 % for both (CBD) and (CSS), so light transmission through (CBD) films was higher than (CSS) as shown in figure 4. This characteristic showed that CdS is a good window layer for the thin film solar cells of many kinds fabricated by both of the techniques. The Swanepoel model provided calculations about thickness and refractive index. Energy values were calculated by plotting a graph between energy and  $(\alpha h\nu)^2$ . Formula for refractive index (n) is given in equation 1 and 2.

$$n = \frac{N^2 + \sqrt{(N^2 - 4S^2)}}{2} \quad (1)$$

“N” represents the number of oscillations and can be calculated as

$$N = 1 + S^2 + 4S \left( \frac{T_M - T_m}{T_M T_m} \right) \quad (2)$$

S is the substrate refractive index, now thickness “d” can be calculated as

$$d = \frac{1}{4n} \left[ \frac{\lambda_M \lambda_m}{\lambda_M \lambda} \right] \quad (3)$$

from the transmission curves. The energy gap of the material can be calculated with the help of the following equation [24]

$$\alpha h\nu = A (h\nu - E_g)^{N/2} \quad (4)$$

where alpha ( $\alpha$ ) is absorption coefficient, A is a constant,  $h\nu$  is the photon energy, E is the energy gap and N depends on the nature of transition. The absorption co-efficient can be calculated as

$$\alpha = \frac{1}{d} \ln \left[ \frac{1}{T} \right] \quad (5)$$

where  $d$  is the thickness and  $T$  is the transmittance,  $\lambda_m$  is the minima and  $\lambda_M$  is the maxima value of the wavelength taken from the transmission spectrum [8].

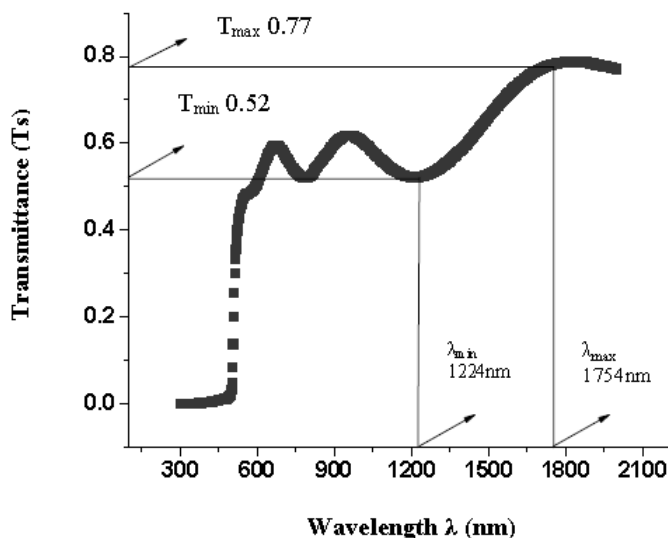


Figure 3. Transmittance (T) curve of as-deposited CdS sample

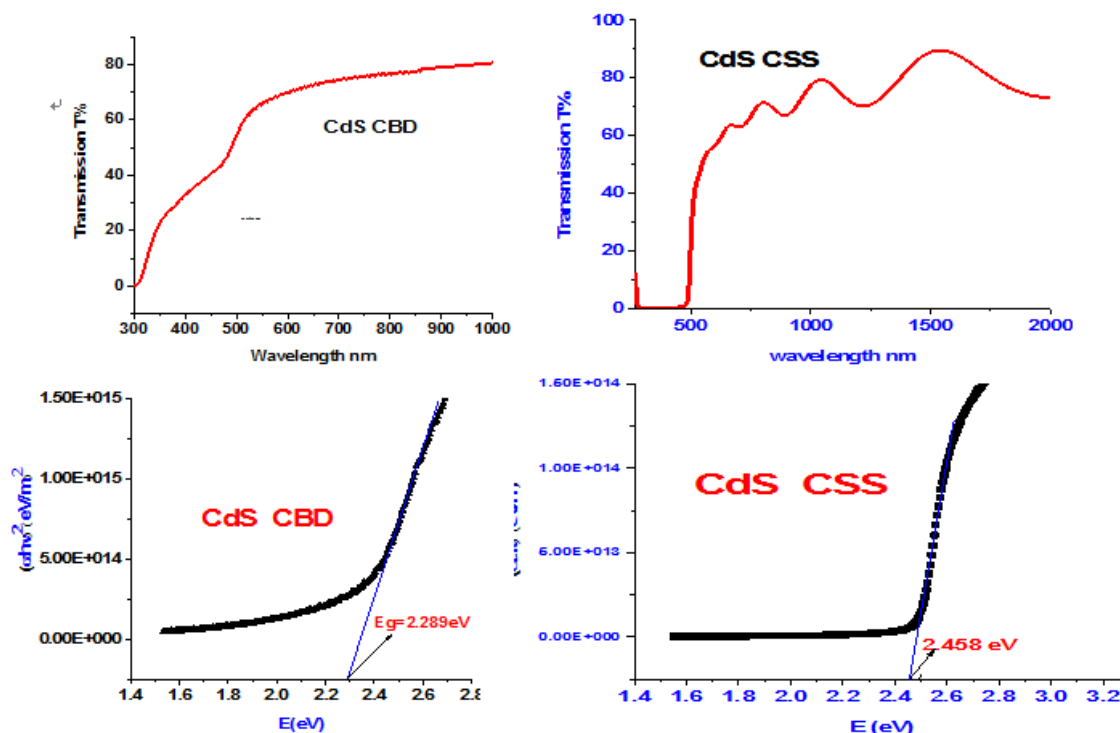


Figure 4. CdS Transmission and Energy band spectra for both (CBD) & (CSS)

Energy band gap behavior with respect to thickness was almost same for both CBD and CSS. The energy band gap was 2.32 eV of CBD for thickness of 42 nm. It was 2.39 eV for 257 nm thickness samples.

Similarly for CSS, the band gap was increasing with increase of thickness but it then decreased for higher thickness. Band gap was 2.30 eV for 574 nm thickness which was increased to 2.46 eV for 1184 nm thickness but then it decreased to 2.37 eV for 1800 nm thickness.

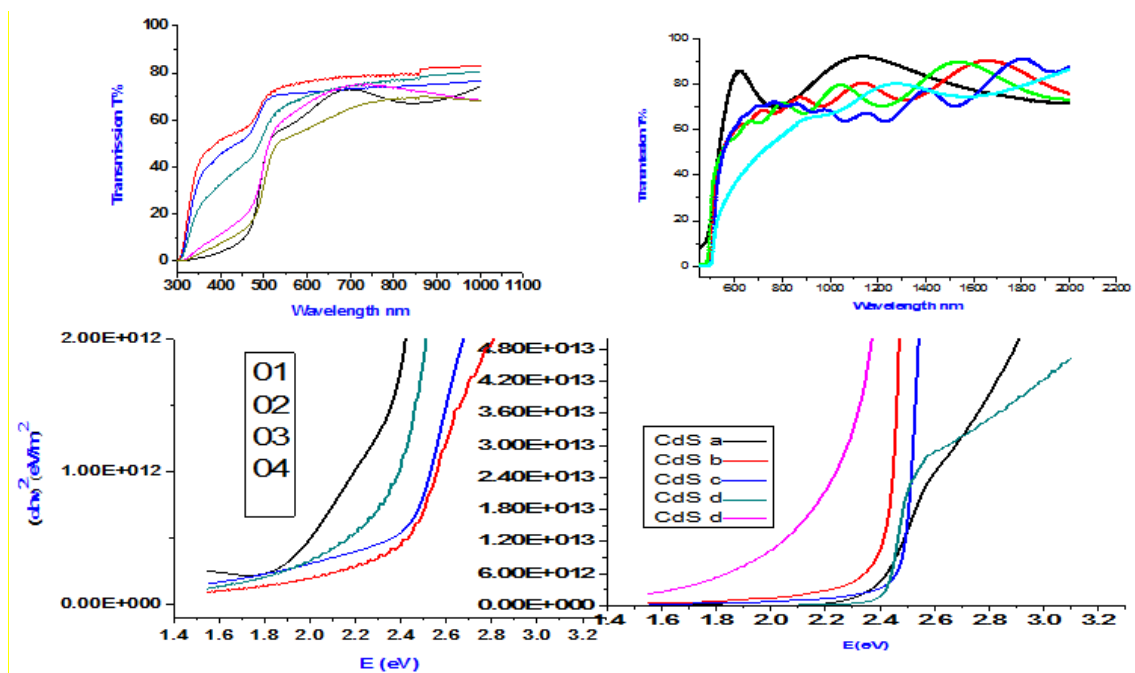


Figure 5. Combined Transmission Spectra and Energy band gaps of CdS CBD

Table 1. CBD thickness & band gap

S.No CBD	Deposition Time (min)	Thickness (nm)	$E_g$ (eV)
1	5	42	2.32
2	8	55	2.34
3	10	60	2.29
4	20	127	2.36
5	40	257	2.39

Table 2. CSS thickness & band gap

S.No CSS	Deposition Time (min)	Thickness (nm)	$E_g$ (eV)
A	4	574	2.30
B	5	583	2.39
C	6	803	2.43
D	8	1184	2.46
E	10	1800	2.37

#### 4 Structural Analysis of CdS (CBD) and CdS (CSS)

Structural properties were studied by X-ray diffraction using  $\text{CuK}\alpha$  radiations of  $1.5418 \text{ \AA}$ . The data analysis provided lattice constant as  $6.50 \text{ \AA}$  for as deposited sample. The lattice parameter can be calculated by using the relation for only cubic structure.

$$a = d\sqrt{h^2 + k^2 + l^2} \quad (6)$$

where h, k, l are Miller indices, for hexagonal structure formula for “d” is

$$\frac{1}{d^2} = \frac{4}{3} \left( \frac{h^2 + hk + k^2}{a^2} \right) + \frac{l^2}{c^2} \quad (7)$$

$$\text{Crystalline Size} = \frac{(0.9\lambda)}{\text{Cos}} \tag{8}$$

where  $\lambda$  is X-rays wavelength, 0.9 is a constant shape factor,  $\beta$  is full width half maxima in radians,  $\theta$  is Bragg's angle. [25] Peaks relating to CdS can be identified by using standard card JCPDS-00-041-1049. The d-spacing values were compared with standard values of ASTM cards to find the structure. It was observed in this experimental work that CdS thin films had a mixed structure of H (002) and C (111) for both techniques. So CdS has a polycrystalline behavior [20-22].

The XRD spectra were taken scanning the values of  $2\theta$  from  $20^\circ$  to  $80^\circ$ . In CdS (CSS) high energy planes were grown during the film growth due to high temperature but in CdS (CBD) recrystallization can be observed due to low temperature [21]. In most of the research papers CBD has dominant cubic structure [22-24] and CSS process has dominant hexagonal structure [15] but most of the times mixed structures were obtained [23]. In our research work for both CBD and CSS techniques first hexagonal strong peak was dominant. The size of grains was different for different fabrication techniques. This may be due to film thickness, temperature or different nucleation rate of CdS for different deposition methods [25]. Fig. 6 (a) and (b) showed the X-ray diffraction traces of CBD and CSS. The  $2\theta$  values for first peak for both CBD and CSS were in between (25-26.8) degree of angle.

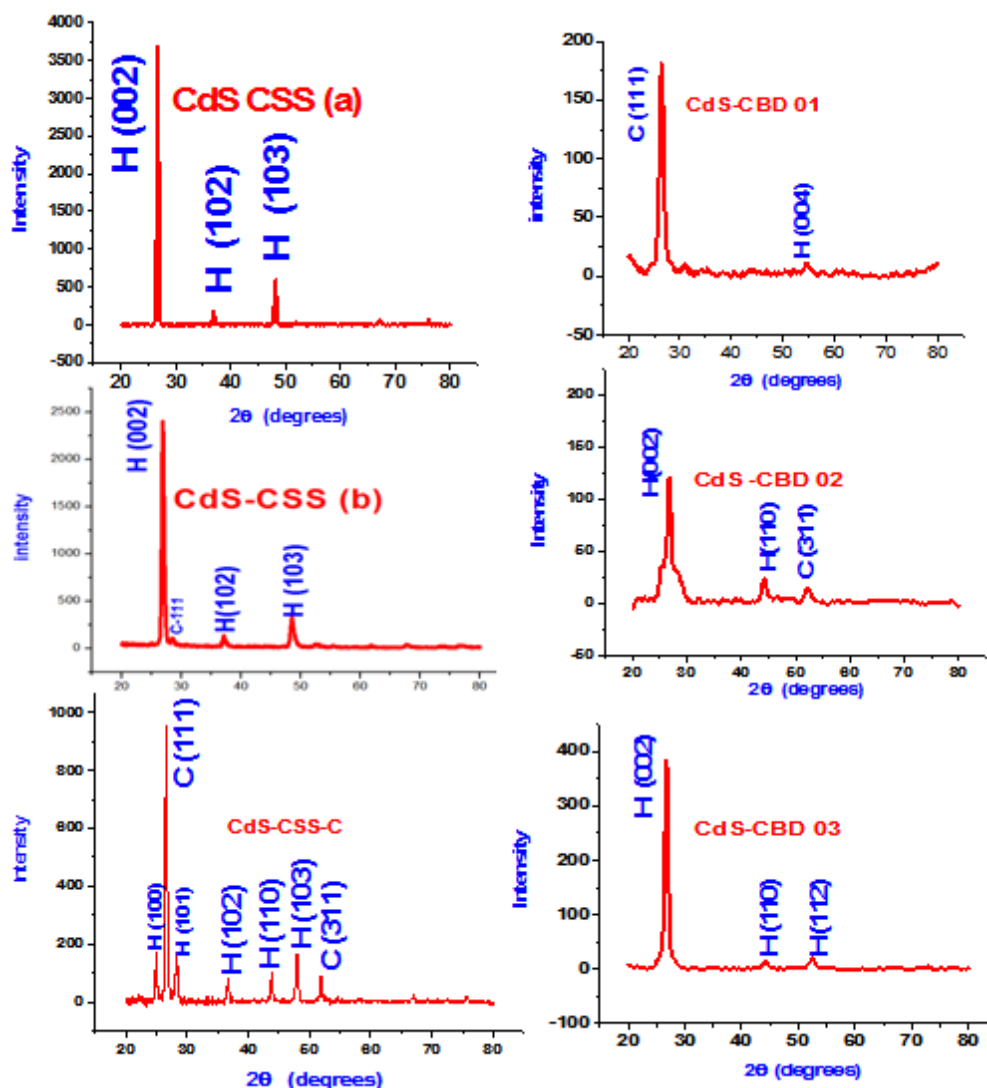


Figure 6. (a) XRD graphs by CSS; (b) XRD graphs by CBD

**Table 3.** XRD data for CdS (CBD)

S.No (CBD)	2 $\theta$	FWHM	Crystalline size ( $\text{\AA}$ )	Crystal System	Lattice parameter
CdS (1)	26.49	0.47	173.02	Cubic and Hexagonal	[111] Cubic $a_0 = 5.82 \text{ \AA}$ [004] Hexagonal $a = 4.14 \text{ \AA}$ $c = 6.7 \text{ \AA}$
CdS (2)	25.19	0.39	207.07	Cubic and Hexagonal	[311] Cubic $a_0 = 6.12 \text{ \AA}$ H[002, 110] $a = 4.14 \text{ \AA}$ $c = 6.7 \text{ \AA}$
CdS (3)	26.74	0.15	519.43	Hexagonal	[002,110,112] All Hexagonal $a = 4.14 \text{ \AA}$ $c = 6.7 \text{ \AA}$

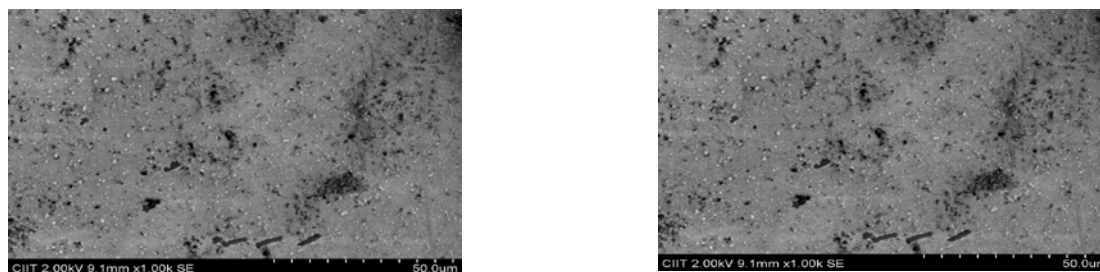
**Table 4.** XRD traces of CdS (CSS) as deposited samples

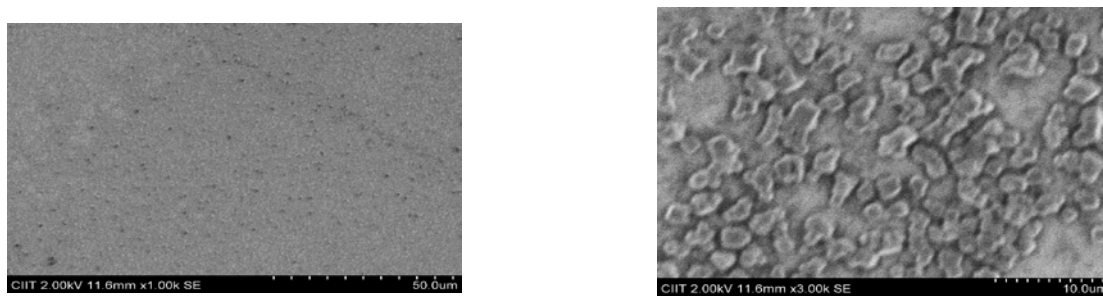
S.No (CSS)	2 $\theta$	FWHM	Crystalline size ( $\text{\AA}$ )	Crystal System	Lattice parameter
CdS (a)	26.71	0.3542	230	Hexagonal	[002,102,103] All Hexagonal $a = 4.14 \text{ \AA}$ $c = 6.72 \text{ \AA}$
CdS (b)	26.82	0.4330	188	Hexagonal	[002,102,103] All Hexagonal $a = 4.14 \text{ \AA}$ $c = 6.72 \text{ \AA}$ [220] Cubic
CdS (c)	25.0204	0.2755	295	Cubic and Hexagonal	[111] Cubic $a_0 = 6.16 \text{ \AA}$ [101,102] Hexagonal $a = 4.14 \text{ \AA}$ $c = 6.72 \text{ \AA}$ [110] Hexagonal $a = 4.13 \text{ \AA}$ $c = 6.71 \text{ \AA}$

In CdS (CSS) strong and high peak was H(002) for two samples and it was C(111) for third sample. It was very difficult to elucidate for (c) sample as hexagonal or cubic structure, because difference in position of peak was very small upto (0.021  $^\circ$ ) as reported [26-27]. Height of peak/ intensity was 4000, 2500, and 1000 counts at 2 $\theta$  value of (26.705, 26.8218 and 26.5638) degree, other peaks were H(002), H(103) and C(220) which proved the polycrystalline behavior of CdS thin films. The height of peak/intensity for CdS (CBD) was only upto 200, 150 and 400, first strong peak was H(002) for two samples and C(111) for third sample at 2 $\theta$  value of (26.49, 25.19, 26.74) degree of angle.

## 5 SEM Analysis of CdS (CBD) and CdS (CSS)

Surface morphology was studied by using Scanning Electron Microscopy (SEM). Grain size for CdS (CSS) was measured as (300-400) nm.

**Figure 7.** (a) CBD-CdS of 170 nm thickness; (b) CBD-CdS of 60 nm thickness



**Figure 8.** (a) CSS-CdS at source temperature 650 °C and (b) CSS-CdS at 680 °C

Surface of CBD films was slightly non uniform but CdS (CSS) structure was fine with better Crystallinity. SEM analysis showed that CBD-CdS thin films grain size approximately was found to be (50-100) nm and CSS-CdS films grain size was approximately (200-300) nm. It was also observed that at high source temperature, grain size was bigger in the CSS technique. It is reported in the literature that even less crystalline and non uniform films of CBD process gave high efficiency as compared to CSS [5].

## 6 Conclusion

CdS thin films were fabricated on glass slides by CBD and CSS techniques successfully. XRD results showed that both fabrication methods gave mixed hexagonal and cubic structure. Size of grains in CSS was bigger than CBD. High peaks in CSS showed that it had better crystalline structure as compared to CBD. Films of CBD were more transparent and thinner but CSS films were less transparent due to surface roughness. Transmission in CBD started after 300 nm of light wavelength but for CSS light transmission started after 500 nm. So CSS thin films absorbed blue portion of light more. Both fabrication methods produced more than 70 % transmission of light in the visible spectrum. The band gap behavior as a function of thickness was same for both CBD and CSS. CdS thin films are more suitable materials as window layer in solar cell fabrications.

## References

1. N.A.Shah, W.A.Adil, M.A.Atta "Characterization of II-VI Semiconductor thin films fabricated by Close Spaced Sublimation" J. Nanoscience and nanotechnology letters, (2009), pp (65-69).
2. M.Khaled, Abu El-Rub, S.R. Hahna, S. Tari and M.A.K.L. Dissanayakec, "Effects of CdCl<sub>2</sub> heat treatment on the morphological and chemical properties of CdTe/CdS thin films solar cells" Applied Surface Science, (2012), pp (6142).
3. M.A.GREEN, K. EMERY, Y.HISHIKAWA, "Solar Cells Efficiency Tables (version 42)", Pro-gress in Photovoltaics: Research and Applications, (2013), 21 pp (827-837).
4. R. Reisfeld, "Nanosized semiconductor particles in glasses prepared by the sol-gel method: their optical properties and potential uses" Journal of Alloys and Compounds, (2002), 341 pp (1-12).
5. Y. A. Salazar, R. Patino, J. L. Pena, W. Cauich, and A.I. Oliva, "Physical Properties of CdS/ITO Thin Films Growth by CBD Technique with Substrate Oscillating Agitation" Brazilian Jr. Phy, (2006), 36 pp (1058-1061).
6. A. Ordaz-Flores, P. Bartolo-Perez, R.Castro-Rodriguez, A.I. Oliva Revista Mexicana De Fisica, "Annealing effects on the mass diffusion of the CdS/ITO interface deposited by chemical bath deposition" J. REVISTA MEXICANA, (2005), 52 pp (15-19).
7. Q.Q. Liu, J.H. Shi, Z.Q. Li, D.W. Zhang, X.D. Li, Z Sun, L.Y. Zhang, "Morphological and stoichiometric study of CBD CdS films by varying ammonia concentration" J. Physics of Condensed Matter, (2010), 405 pp (4360-4365).
8. N. A. Shah, A. Nazir, "Physical properties and characterization of Ag doped CdS thin films" Journal of Alloys and Compounds, (2012), 512 pp (27-32).



9. D. Bonnet, et al., "New results on the development of a thin film p-CdTe-nCdS heterojunction solar cell" In the proceedings of the 9th IEEE, Photovoltaic Specialists Conference, (1972), pp (129-132).
10. N.A. Shah, A. Ali, S. Hussain and A. Maqsood, "CdCl<sub>2</sub>-treated CdTe thin films deposited by the close spaced sublimation technique" *J. Coat. Technol. Res.*, (2010), 7 pp (105).
11. S. Linsi, B. Kavitha, M. Dhanam and B. Maheswari, "Analysis of Cu:CdS Thin Films of Three Different Copper Compositions" *World Applied Sciences Journal*, (2010), 10 pp (207-213).
12. N.A. Shah, A. Nawaz, A. Kanwal and W.A. Syed, "Comparative Study of Cadmium Sulfide Thin Films at Room and Low Temperatures Fabricated by Closed Space Sublimation Technique" *World Applied Sciences Journal*, (2013), 28(4) pp (548-553).
13. P. Sinha, "Life cycle materials and water management for CdTe photovoltaics" *J. Solar Energy Materials & Solar Cells*, (2013), 119 pp (271-275).
14. M. Gloeckler, I. Sankin, Z. Zhao "CdTe Solar Cells at the Threshold to 20%" *IEEE Journal of Photovoltaic*, (2013), 3 pp (1389-1393).
15. L. Rosa Cruz<sup>1</sup>, J. Antônio Sousa Fernandes<sup>1</sup>, C. Luiz Ferreira<sup>1</sup>, W. Anacleto Pinheiro, "Microstructural and optical properties of CSS and CBD-CdS thin films for photovoltaic solar cells" *Journal of REVISTAMATERIA*, (2014), pp (228-234).
16. R. MENDOZA-PEREZ, G. SANTANA-RODRIGUEZ, J. SASTRE-HERNANDEZ, et al. "Effects of thiourea concentration on CdS thin films grown by chemical bath deposition for CdTe solar cells" *Journal of Thin Solid Films*, (2005), 480-481 pp (173-176).
17. H.R. MOUTINHO, D. ALBIN, Y. YAN, "Deposition and properties of CBD and CSS CdS thin films for solar cell application" *Thin Solid Films*, (2003), V 436, pp (175-180).
18. N. A. Adnan, N. A. Shah, "Effect of Ag doping on opto-electrical properties of CdS thin films for solar cell applications" *Journal of Alloys and compounds*, (2014), 609 pp (40-45).
19. M.D.G. Potter, M. Cousins, K. Durose and D.P. Halliday, "Effect of interdiffusion and impurities on thin film CdTe/CdS photovoltaic junctions" *Journal of Materials Science: Materials in Electronics*, (2000), 11 pp (525).
20. C.Y. Park, U. Kefayat, N. Vikram, T. Ghosh, W.C. Oh and K.Y. Cho "Preparation of novel CdS/graphene/TiO<sub>2</sub> composites with high photocatalytic activity for methylene blue dye under visible light" *Bulletin of Materials Science*, (2013), 36 pp (869).
21. N.A. Shah, A. Ali and A. Maqsood "Preparation and Characterization of CdTe for Solar Cells, Detectors and Related Thin Film Materials" *J. Electron. Mater.*, (2008), 37 pp (145).
22. J. SCHAFFNER, E. FELDMEIER, A. SWIRSCHUK, "Influence of substrate temperature, growth rate and TCO substrate on the properties of CSS deposited CdS thin films", *Thin Solid Films*, (2011), 519 pp. (7556-7559).
23. E.M. FELDMEIER, A. FUCHS, SCHAFFNER, "Comparison between the structural, morpho-logical and optical properties of CdS layers prepared by Close Space Sublimation and RF magnetron sputter-ing for CdTe solar cells" *Thin Solid Films*, (2011), 519 pp (7596-7599).
24. A.I. Oliva, R. Casto-Rodriguez, O. Solis-Canto, Victor Sosa, P. Quintana, J.L. Pena, "comparison of properties of CdS thin films grown by two techniques" *Jr. applied surface science*, (2003), pp (56-64).
25. P.M. Lisco, Kaminski, A. Abbas, K. Bass, J.W. Bowers, G. Claudio, M. Losurdo, J.M. Walls, "The structural properties of CdS deposited by chemical bath deposition and pulsed direct current magnetron sputtering" *J. Thin Solid Films*, (2015), 582 pp (323-327).
26. H. Moualkia, S. Hariech, M.S. Aida, Structural and optical properties of CdS thin films grown by chemical bath deposition" *Thin Solid Films*, (2009), 518 pp (1259-1262).
27. M.A. Islama, M.S. Hossain, M.M. Aliyub, P. Chelvanathana, Q. Huda, M.R. Karim, K. Sopian, N. Amin, "Comparison of Structural and Optical Properties of CdS Thin Films Grown by CSVT, CBD and Sputtering Techniques" *Energy Procedia*, (2013), 33 pp (203-213).