

doi: 10.4103/2221-1691.244159

©2018 by the Asian Pacific Journal of Tropical Biomedicine.

Phytochemical composition of *Caesalpinia crista* extract as potential source for inhibiting cholinesterase and β -amyloid aggregation: Significance to Alzheimer's disease

Kolambe Rajappa Chethana¹, Balappa Somappa Sasidhar², Mahadeva Naika³, Rangappa Sangappa Keri¹✉

¹Centre for Nano and Material Sciences, Jain University, Jain Global Campus, Kanakapura, Ramanagaram, Bangalore-562112, India

²Chemical Sciences and Technology Division, CSIR-National Institute for Interdisciplinary, Science and Technology (CSIR-NIIST), Kerala, Trivandrum-695019, India

³Applied Nutrition Division, Defence Food Research Laboratory, Mysore – 570011, India

ARTICLE INFO

Article history:

Received 13 April 2018

Revision 18 June 2018

Accepted 18 September 2018

Available online 29 October 2018

Keywords:

Alzheimer's disease

Caesalpinia crista

Acetylcholinesterase

Butyrylcholinesterase

β -Amyloid

ABSTRACT

Objective: To screen plant extract fractions and elucidate the components present in *Caesalpinia crista* (*C. crista*) leaves for cholinergic and anti-amyloidogenic activities for the treatment of Alzheimer's diseases. **Methods:** This work has been carried out to study the action of *C. crista* extracts from nonpolar to polar solvents toward inhibition of oxidative stress, cholinergic and amyloidosis. The antioxidant activity was studied using DPPH total antioxidant assay; cholinergic assay by Ellman's method and anti-amyloidogenic assay by thioflavin-T fluorescence and transmission electron microscopy. **Results:** The quantification of polyphenols was carried out following *C. crista* methanolic extract (CCMeOH) HPLC fingerprinting, along with LC-MS and elucidated by MS LAMPS database. GC-MS of CCMeOH was screened for potential moieties. *In vitro* experimental results showed that the CCMeOH was potential extract that exhibited active inhibition of antioxidant property, cholinergic enzymes acetylcholinesterase and butyrylcholinesterase. For anti-amyloidogenic evaluations, among all the extracts, the CCMeOH was found to have the potential toward inhibiting the oligomers, fibrillation of $A\beta_{42}$ with good defibrillation of amyloid cascading properties. **Conclusions:** These results are also supported by the presence of polyphenols as the active ingredients. Multi-potent target drug therapy is a promising option in treating the Alzheimer's diseases. Methanolic extract of *C. crista* shows potential activity against cholinergic enzymes, $A\beta_{42}$ aggregation with antioxidant activity.

1. Introduction

Alzheimer's disease (AD) is considered as the neurodegenerative disease that contributes to dementia-related brain disorders. The most probable hypothesis on AD is the amyloid hypothesis, inclusive of pathogenic hallmarks such as over expression of the protein, pathogenic mutation, aging, oxidative stress, impaired autophagy, proteasome impairment cumulative chairing in triggering of oligomerization of protein thus stimulating the neuroinflammatory

complex and final staging for neurodegeneration. In the pathway leading to amyloidogenesis, the amyloid precursor protein is an integral membrane protein encoded by autosomal dominant familial AD gene. The amyloid precursor protein is cleaved by β -secretase and subsequent snipping by γ -secretase releasing amyloid peptides

This is an open access journal, and articles are distributed under the terms of the Creative Commons Attribution-Non Commercial-Share Alike 4.0 License, which allows others to remix, tweak, and build upon the work non-commercially, as long as appropriate credit is given and the new creations are licensed under the identical terms.

For reprints contact: reprints@medknow.com

©2018 Asian Pacific Journal of Tropical Biomedicine Produced by Wolters Kluwer-Medknow

How to cite this article: Chethana KR, Sasidhar BS, Naika M, Keri RS. Phytochemical composition of *Caesalpinia crista* extract as potential source for inhibiting cholinesterase and β -amyloid aggregation: Significance to Alzheimer's disease. Asian Pac J Trop Biomed 2018; 8(10): 500-512.

✉ Corresponding author: Rangappa Sangappa Keri, Organic and Medicinal Chemistry Laboratory, Centre for Nano and Material Sciences, Jain University, Jain Global Campus, Jakkasandra post, Kanakapura Road, Ramanagara District, Karnataka-562112, India.

Tel: +918027577199

E-mail: keriphd@gmail.com, sk.rangappa@jainuniversity.ac.in

into extracellular space. The cleaved protein fragment amyloid beta is of 4 kDa, extracellular assembly of these monomers with intermediates composed into oligomers and protofibrils, which has a stellar role in the formation of insoluble senile plaques which disrupts the neuronal network. Subverting of neuronal cells ensues in the diminishing of the cholinergic network with higher activity of acetylcholinesterase (AChE)[1]. Neurotransmitter acetylcholine is hydrolyzed by the catalytic action of AChE, which belongs to serine hydrolases enzyme classification. The sister enzyme butyrylcholinesterase (BChE) is also well studied in drug inhibition that is said to have a similar role as that of AChE, which is present in glial cells. These two enzymes have been studied extensively as cholinergic neurons in the central nervous system of the brain and are studied for AD drug inhibition. Cholinergic hypothesis is the first ever hypothesis considered for therapeutic approaches for AD[2]. According to Alzheimer report, people living with dementia estimated to be 46.8 million worldwide in 2015 and predicted to be doubled every 20 years, which will be increased to 74.7 million in 2030 and 131.5 million in 2050. Several generic drugs such as donepezil (Aricept), rivastigmine (Exelon), galantamine (Razadyne), memantine (Namenda) found to be symptomatic cure towards AD, where the first three are cholinergic drugs and latter acts as NMDA receptor antagonist[3]. In the past decade, researchers have come up with several drugs to treat AD that only slightly delay the inevitable symptomatic progression of the disease and they do not affect the main neuropathological hallmarks.

Therefore, there is an enormous medical need for new and more effective therapies and drugs, which are essentially free from deleterious side effects for the treatment of AD. Thus, this could add weight to the argument that the natural products are inherently better tolerated in the body than that of the synthetic chemicals and they have higher chances to be approved as new drugs for AD. *Caesalpinia crista* (*C. crista*) Linn. [syn *Caesalpinia bonducella* (L.) Roxb.] which belongs to Fabaceae family is a woody vine that is scandent and straggling. It is also a prickly shrub growing up to 5-10 m tall, which is widely distributed across India growing mainly in marshy and plain terrains, and the habitat of tropical and subtropical regions of Southeast Asia. It is one of the major herbal plants found in Western Ghats region of Karnataka, India locally called as Gajjiga. The Sanskrit name is Kuberakshi or Latakaranj[4,5] and it is also called as fever nut. Many traditional uses of *C. crista* have been reported for various ailments such as vomiting, leprosy, disorders of the blood, fever and abdominal related problems[6]. Plant parts such as seed, bark, root, flower, leaves, and nuts are used to treat various disorders. Seeds are used to treat malarial fever, skin disorders like leprosy, inflammation, and used as anthelmintic and one of the ayurveda compositions for snake bite, convulsions, and paralysis. Leucorrhoea is treated by the skin of the seeds. Fresh leaves juice is used to treat mucous secretion, while oil from leaves is considered as nervine tonic[7,8].

Each and every part of the *C. crista* plant is claimed to possess some therapeutic properties. However, the seed kernel is the most widely used part all over the world in various systems of medicine. Pharmacological investigations revealed the medicinal properties of *C. crista* such as antinociceptive, antimalarial, antimicrobial, antifungal, larvicidal, muscle contractile, hepatoprotective,

anticonvulsant, anti-filarial, antitumor, antipsoriatic, antiestrogenic, adaptogenic, anthelmintic, antidiabetic and anti-inflammatory[9]. Recent studies indicated that the plants belonging to the genus *Caesalpinia* are rich in cassane- and norcassane-type diterpenoids, flavonoids and peltogynoids[10]. These scientific studies essentially shed insights on the effective usage of *C. crista* leaves in exploring their potential properties towards treating AD.

Several contemporary pharmaceuticals that are being used in conventional medicine, have natural plant origins, while they have been derived directly or indirectly from plants. The ethnopharmacological approach provided several paths to identify potential new drugs from plant sources. This information may also be useful as a starting point for the discovery of new drug molecules for the treatment of AD and cognitive disorders. Considering the importance of plant sources and continuation of our work towards the treatment of AD[11,12] herein, we wish to report the application of *C. crista* leaves extract as an anti-AD agent. The present study focused on the screening of plant extracts to evaluate their AChE and BChE inhibitory activities, antioxidant assay and amyloidogenic inhibition supported by thioflavin-T (ThT) assay and morphological properties using transmission electron microscopy (TEM) technique.

2. Materials and methods

2.1. Samples and reagents

2,2-Diphenyl-1-picrylhydrazyl (DPPH), gallic acid, protocatechuic acid, catechin, chlorogenic acid, epicatechin, caffeic acid, vanillin, *p*-coumaric acid, sinapic acid, rutin hydrate, myrcitin, cinamic acid, quercetin, kaempferol, Electric eel acetylcholinesterase (Type-VI-S, EC 3.1.1.7AChE) 500 U, 5,5-dithiobis (2-nitrobenzoic acid) (DTNB), ThT-T, 1,1,1,3,3,3-hexafluoro-2-propanol (HFIP), uranyl acetate, acetylcholine iodide were purchased from Sigma-Aldrich, St. Louis, MO, USA. Amyloid beta 42 was acquired from EZ biolabs, butyrylcholine iodide from TCI, carbon coated copper grids from Grid tech. Besides, methanol, aluminum chloride, potassium acetate, sodium carbonate, ascorbic acid Tris (hydroxymethyl) aminomethane (Tris buffer), and dimethylsulfoxide (DMSO) were purchased from Merck, USA; Folin and Ciocalteu's reagent from Thomas Baker Limited; Galanthamine from Medchem; Express LLC and horse serum BChE from MyBioSource. All chemicals and reagents used in the experiment were of analytical grade.

2.2. Collection of plant material

The fresh leaves of *C. crista* were collected in June to July (2013) from the region near to Suntikoppa, Kanbile village located in Kodagu district, Karnataka, India. The plant material was identified by Botanist Dr. Naresh, Professor at Cauvery College, Gonikoppa, Kodagu, Karnataka, India. Voucher specimen was deposited at Regional Ayurveda Research Institute for Metabolic Disorder, CCRAS, Ministry of Ayush, Government of India, and the authentication number is RRCBI-6244.

2.3. Preparation of plant extracts

Fresh leaves were collected and washed thoroughly to remove dust and left for drying under shade for over a week at room temperature in moist free condition. The dried leaves were subjected to mechanical shear to obtain a coarse powder. About 40 g of coarse powder was subjected to extraction by different solvent systems such as *n*-hexane, petroleum ether, and methanol with a volume of 200 mL by soxhlet extractor for a period of 72 h and solvent was removed by rotary evaporation. Aqueous extraction was carried out by steam boiling until water condensed to one-third of the initial volume and, allowed to cool and lyophilized to obtain a dried extract. The total extracts were stored at 4 °C for further use.

2.4. Determination of plant extract yield

Yield of plant subjected to subsequent solvent extraction was expressed as percentage yield that was calculated by

$$\text{Yield (\%)} = (W_2/W_1) \times 100$$

Where, W_2 is the dried extract weight and W_1 weight of the original sample.

2.5. Determination of total polyphenols content and HPLC profiling, liquid chromatography mass spectrometry (LC-MS) and gas chromatography mass spectrometry (GC-MS)

2.5.1. Total phenolic quantification

Total phenol content of the plant extracts was determined using Folin-Ciocalteu reagent. Different concentration aliquots of the samples were taken and volume was made up to 750 μ L using distilled water and 0.125 mL of Folin-Ciocalteu reagent was added. Then, the mixture was shaken well and allowed to stand for 6 min before adding 1.2 mL of 7% Na_2CO_3 and the final volume was adjusted to 3 mL and mixed thoroughly and incubated in dark for 90 min. The optical absorbance of the obtained extract was read at 760 nm. Gallic acid was considered as a standard to obtain the calibration curve. Average of three tests was considered and total phenolic content of all plant extracts was expressed as mg of gallic acid equivalents (GAE) per gram of the dried extract (mg GAE/g dry extract)[13].

2.5.2. Total flavonoid quantification

Total flavonoid content was measured by preparing different aliquots of the plant extracts. In this procedure, 0.1 mL 10% aluminum chloride and 0.1 mL potassium acetate (1 M) were added and final volume was made up to 3 mL by adding the distilled water. Then, the samples were incubated for 30 min at room temperature. Absorbance was read at 415 nm and quercetin was considered as a standard to obtain the calibration curve. Triplicate of each tests was used and results were expressed in milligrams of quercetin equivalents (QE) per gram of dry extract (mg QE/g of dry extract) to quantify the total flavonoid content using the standard curve of quercetin[14].

2.5.3. HPLC fingerprinting of *C. crista* methanolic extract (CCMeOH)

Phenolic acid profiling was carried on RPC18 column (150 mm

\times 4.5 mm) and detected with diode array detector (JASCO HPLC system; Easton, PA, USA) for the MeOH extract of *C. crista*. The mobile phase used was 0.1% formic acid (solvent A) and methanol (solvent B). The solvent gradient elution program was used as per the reported method with minor modification[15]. The CCMeOH extract and all standards were dissolved in methanol to get concentration of 1 mg/mL solution and filtered through 0.22 μ m Merck syringe filters. A total of 20 μ L of the sample and standards, such as gallic acid (1), protocatecheuic acid (2), catechin (3), chlorogenic acid (4), epicatechin (5), caffeic acid (6), vanillin (7), *p*-coumaric acid (8), sinapic acid (9), rutin hydrate (10), myricitin (11), cinamic acid (12), quercetin (13), and kaempferol (14) were injected into the column and the phenolic acids were detected at 270 nm. Triplicate injections were carried for each of standards and the sample. Retention time and UV-visible spectra of the area under peaks that were compared with those of the standards and samples were expressed as mean \pm SEM.

2.5.4. TLC profiling of CCMeOH

Preliminary phytochemicals were further confirmed using TLC. Aluminum sheet with silica gel 60 F254 plate was used as stationary phase and solvent system *n*-hexane:ethyl acetate (4:2) used as a mobile phase for the development of chromatogram. Further, the CCMeOH extract was subjected to silica 60-120 mesh column chromatography with *n*-hexane:ethyl acetate (4:2) solvent system. All seventeen fractions were collected and out of which only sixteenth and seventeenth fractions were solvent dried and subjected to LC-MS along with whole CCMeOH extract[16].

2.5.5. Identification and quantification analysis of CCMeOH constituents by LC-MS

HPLC was performed using Waters Acquity liquid chromatograph system with column Acquity UPLC BEH C18 1.7 μ m \times 1.0 mm \times 50 mm and higher pressure limit upto 600 bar. Coupled with Waters Acquity Autosampler Electro Spray Ionization system. Quadru Pole Time of Flight (Waters, USA) fitted with the liquid chromatography system coupled on-line with an Electro Spray Ionization source and MassLynx software was used for data acquisition. Analytical conditions were: positive ion mass spectra and mass were recorded in the range m/z 100-800. Capillary temperature was kept at 250 °C and voltage 2.8 kV and Sheath gas flow rate was kept at 350 L/h. The resulting total ion chromatogram is a plot of time *vs* area showing the total response of each constituent on the basis of its molecular ion abundance. The mobile phase was composed of solvent A: 0.1% of formic acid in water, and solvent B: acetonitrile. The flow rate was 0.4 mL/min. The elution was performed starting at 10% of solvent which increased up to 95% solvent B after 4.5 min. The injection volume was 10 μ L for the measurement in positive mode with total run time of 8 min. Column temperature was 50 °C and sample temperature 20 °C. The library search was performed by using the database MS-LAMPS[17].

2.5.6. Identification and quantification analysis of CCMeOH constituents by GC-MS

GC-MS analysis of CCMeOH extract was performed on a Shimadzu (Tokyo, Japan) Make GCMS-TQ8030 with nonpolar Rxi 5Sil MS capillary column, full scan mode, injector mode-splitless, quadra pole

mass selective detector, injection temperature 250 °C, GC-MS interface temperature was 250 °C, and the injection volume was 1 µL. Helium was employed as carrier gas, at a pressure of 57.5 kPa; flow rate was 1 mL/min. Mass spectra were detected at 70 eV. Temperature programming was set as follows: column temperature was started from 60 °C (held for 2 min) and linearly increased by 5 °C/min to 200 °C (held for 2 min); after that it was increased by 3 °C/min to 220 °C (held for 1 min); further it was increased by 6 °C/min to 250 °C (held for 20 min). Total GC running time was 64.67 min and the results were compared by using Wiley Spectral library search programme[18].

2.6. Antioxidant assay

The antioxidant activity was measured by the DPPH method[19]. The free DPPH in purple color changes into yellow color upon reaction with hydrogen donors, This is because of the reaction between hydrogen donors and DPPH free radical that leads to its reduction to corresponding hydrazine. Sample stock solution (10 mg/mL) was diluted with various concentrations with methanol and 1 mL of DPPH (0.04 mg/mL), and 3 mL of methanol were added into the samples, which were incubated for 30 min at room temperature. The absorbance was measured at 517 nm against the corresponding blank (methanol). All plant samples were dissolved in methanol. The IC₅₀ values were calculated by linear regression of plot of standard curve where the abscissa represents the concentration of tested plant extracts and the ordinate the average percentage of antioxidant activity from three different tests. Ascorbic acid was used for standard curve and antioxidant activity was calculated by following equation.

$$\text{Inhibition \%} = (A_c - A_s / A_c) \times 100$$

Where, A_c is the absorbance of the control reaction (containing all reagents except the test sample), and A_s is the absorbance of the extracts/reference. Experiments were run in triplicate and the results were conveyed as average values with standard error of the mean (SEM).

2.7. Cholinesterase activity

Inhibition of AChE and BChE was determined by Ellman's method[20,21] with slight modifications[22,23]. To the reaction mixture 0.12 U AChE enzyme and plant extract 100 µL (1 mg/mL) was added along with 640 µL Tris-HCl buffer 50 mM pH 8 into the 1 mL quartz cuvette with path length of 1 mm. This reaction mixture was incubated at room temperature for 5 min. A total of 100 µL DTNB (7.5 mM) and 100 µL acetylcholinesterase (AChE) inhibitor (1 mM) were added and the reading was measured at 405 nm in spectrophotometer. The reaction was monitored for 104 s in the interval of 13 s. The velocities of the reactions were measured. Enzyme activity was calculated as the percentage of the velocities compared to that of the assay using buffer without any inhibitor. Inhibitory activity was calculated from 100 subtracted by the percentage of enzyme activity and every experiment was done in triplicate.

2.8. Anti-amyloidogenic activity

2.8.1. Preparation of amyloid beta 42 (Aβ₄₂) peptide solution

Aβ₄₂ lyophilized powder formerly stored at -20 °C was dissolved in chilled HFIP and vortexed gently for 10 min. Then, the dissolved

Aβ₄₂ was allowed to form pellet at 25 °C and distributed in different vials to get final concentration of 1 µg/µL. The formed pellet of Aβ₄₂ vials was defrosted at -20 °C for future use. The required working vial was thawed for 30 min by keeping at room temperature. The 50 µL of DMSO was added into the pellet, vortexed to mix thoroughly followed by adding 50 µL of sterile double distilled water to obtain final concentration of 1 µg/µL of 221.5 µM[24].

2.8.2. Inhibition of oligomerization, fibrillation and defibrillation of Aβ₄₂

Inhibition of Aβ₄₂ oligomerization among all four extracts, each one (*i.e.* 50 µg/mL) was incubated with 25 µM of Aβ₄₂ after dissolving in 0.4 mM DMSO with ratio of 1:2 in 50 mM Tris-HCl buffer (pH-7.4) incubated at 37 °C for 120 h[25]. Time course Aβ₄₂ fibril formation inhibition by CCMeOH-kinetic study or time lapse study was carried out with 1:1 ratio concentrations of peptide and extracts. Aliquots were collected at different hours 0, 12, 24, 48, 72 and 120 h[26]. For inhibition of fibrillization of Aβ₄₂ by CCMeOH, *i.e.* formation of mature fibril, its inhibition by extract was performed by incubating CCMeOH with peptide in 1:1 (50 µM: 50 µg) ratio for 9 d at 37 °C and control was devoid of extract. There were four groups in ThT assay including CCAI9d (CC is CCMeOH, AI is along with incubation that refers to CCMeOH incubated with Aβ₄₂ for 9 d), CCBI9d (CC is CCMeOH, BI is before incubation Aβ₄₂ allowed to form fibrils for 120 h, then treated with extract and further incubated for a total of 9 d), ConAβ₄₂9d (control for fibrillization and defibrillation), and ConAβ₄₂120h (Aβ₄₂ incubated for 5 days *i.e.* 120 h). For defibrillation of Aβ₄₂ fibrils by CCMeOH, defibrillation study was done by allowing the 50 µM peptide to form fibrils till 120 h and later 50 µg extract was added, mixed and incubated for 9 d. The control was devoid of extract so for fibrillization and defibrillation control was same. Even 120 h data was considered to compare the increase in fluorescence intensity and formation of mature fibrils[27]. For all experimert control Aβ₄₂ was incubated without the extracts, and reaction mixture remained same. Assays were carried out in triplicate.

2.8.3. ThT fluorescence assay

The formation of Aβ₄₂ fibril and its inhibition by the extracts were observed by ThT dye. The binding efficacy of benzothiazole dye to the beta sheet structure of amyloid fibril enhances the fluorescence. The 25 µL (1 mM) of ThT in 50 mM glycine-NaOH (pH 9) was added to peptide solution and incubated for 30 min at 25 °C. Later, using glycine buffer, final volume made up to 1 mL in 1 mm quartz cuvette to the incubated sample, fluorescence was measured at Ex_{450nm} and Em_{482nm} by adjusting the slit width to 5 nm and 10 nm, respectively, in spectrofluorophotometer (RF-5301PC Shimadzu[28,29].

2.9. Transmission electron microscopy (TEM) study

The 10 µL of incubated aliquots were mounted on 400-mesh carbon coated copper grids, after 2-3 min excess was wicked off from edges of grid using ash less filter paper. Sample was then stained by 5 µL of 1% uranyl acetate (w/v) and excess wicked off. Uranyl acetate dissolved in sterile water was mixed thoroughly and filtered using 0.2 µm syringe filter to avoid unsolubilized uranyl acetate. The sample was allowed to be dried and observed under microscope at

120 kV Technai G2 BiotwinFei[30].

2.10. Statistic analysis

The results in spectroscopic studies were represented as triplicate mean±SEM of each sample and graph was plotted in Origin 8. Statistical analysis was carried out using GraphPad Prism 6.01. One-way ANOVA (analysis of variance) followed by Dunnett's multiple comparison tests was carried out and *P* value less than 0.05 was regarded as statistically significant.

3. Results

3.1. Extraction yields, total phenolic and flavonoids content, and HPLC fingerprint profiling

Among all extracts, from non-polar to polar solvent, *CCMeOH* extract showed 6.423% w/w dry weight of total *C. crista* extract. Total content of polyphenols was measured equivalent to mg of gallic acid per gram of dry extract. The phenolic content of *CCMeOH* was 182.25 mg GAE/g dry extract. Subsequently, the quantification of flavonoid content was expressed with respect to quercetin equivalents. The yield of flavonoid content was 441 mg QE/g of dry extract in *CCMeOH* which showed the presence of the highest amount of polyphenols in *C. crista* followed by *CCPE* which contained 412 mg QE/g of dry extract (Table 1).

The presence of highest amount of total polyphenolic content in *CCMeOH* was further subjected to HPLC profiling. A total of 14 standards were compared as shown in Figure 1, in *CCMeOH* extract there existed sinapic acid (215.28 µg/mL), rutin hydrate (499.31 µg/mL), myricitin (317.49 µg/mL) and quercetin (119.20 µg/mL) as in Table 2 along with other polyphenols, which yielded less as compared to above mentioned contents.

Table 1

Total phenolic and flavonoid contents (mg/g) of the *C. crista* extracts.

Extract	Phenolic content (mg	Flavonoid content (mg	% Yield
	GAE/g dry extract) ^a	QE/g dry extract) ^b	
Aqueous (<i>CCAq</i>)	68.28	259	3.738
Methanol (<i>CCMeOH</i>)	182.25	441	6.423
<i>n</i> -Hexane (<i>CCHex</i>)	21.47	209	0.471
Petroleum ether (<i>CCPE</i>)	16.04	412	1.069

^aTotal phenol content expressed as mg of gallic acid equivalents (GAE) per gram of dry extract (mg GAE/g dry extract).

^bTotal flavonoid content expressed as mg of quercetin equivalents (QE) per gram of dry extract (mg QE/g of dry extract).

3.2. Antioxidant activity

Maximum scavenging of synthetic DPPH radical activity was exhibited by *CCMeOH* with 93.01% at 400 µg/mL concentration. The highest activity of *CCAq* activity was 55.74% at 400 µg/mL. *CCHex* and *CCPE* extracts did not show any scavenging activity (Table 3).

3.3. Cholinesterase inhibition activity

Cholinesterase activity of both enzymes AChE and BChE of

CCMeOH found to be 51.19% and 63.86% respectively, and was compared with standard galantamine (96.68% and 83.68%) at 100 µg/mL. The other extracts *n*-hexane, petroleum ether and aqueous extracts did not show the AChE and BChE inhibition activities.

Table 2

HPLC fingerprinting of the methanol extract of *C. crista*.

Sample No.	Annotation ^a	Polyphenols	Phenolic contents in <i>CCMeOH</i> (µg/mL±SEM ^b)
1	1	Gallic acid	3.19±0.19
2	2	Protocatecheuic acid	10.86±1.23
3	3	Catechin	9.46±0.29
4	4	Chlorogenic acid	20.05±0.78
5	5	Epicatechin	4.29±0.01
6	6	Caffeic acid	53.32±2.09
7	7	Vanillin	31.35±1.32
8	8	<i>p</i> -Coumaric acid	98.71±0.58
9	9	Sinapic acid	215.28±0.62
10	10	Rutin hydrate	499.31±0.11
11	11	Myricitin	317.49±0.63
12	12	Cinamic acid	36.04±0.33
13	13	Quercetin	119.20±0.87
14	14	Kaemperol	19.99±0.09

^aRepresents the standard annotation referred as in figure 1.

^bstandard error mean(*n*=3).

Table 3

DPPH radical scavenging activity of *C. crista* extract.

Sample No.	Concentration (µg/mL)	<i>CCMeOH</i> (Inhibition%)	<i>CCAq</i> (Inhibition%) ^a
1	100	28.82±1.20	15.64±0.46
2	200	58.91±0.91	29.35±0.03
3	300	88.46±0.24	46.01±0.23
4	400	93.01±0.33	55.74±0.09
Ascorbic acid (40 µg/mL)		57.06±0.86	–

^aPercentage (%) represents the w/w dry extract.

3.4. Anti-amyloidogenic studies: ThT fluorescence and TEM analysis

Assessment of anti-amyloidogenic property was carried out by treating *C. crista* extracts with Aβ₄₂ to check Aβ₄₂ oligomerization. The *CCMeOH* extract was treated with Aβ₄₂ to analyse the inhibition activity kinetics of fibrillar structure, fibrillation, and defibrillation activity and control was taken without treating Aβ₄₂ with *C. crista* extract.

3.4.1. *C. crista* extracts in inhibiting Aβ₄₂ aggregation

All the four extracts (50 µg) were treated with Aβ₄₂ (25 µM) at 37 °C for 120 h by ThT assay displayed promising inhibition activity as shown in Figure 2a among which, *CCMeOH* showed significant (*P*<0.000 1) inhibition activity. Corresponding TEM electrogram of *CCMeOH* treated with Aβ₄₂ was presented at 500 and 200 nm bar scale while control Aβ₄₂ showed the aggregation of Aβ₄₂ at 500 nm and 100 nm bar scale in Figure 2b. Comparing with control, electrogram showed a completely disorientation of the structural deformation and diminishing of secondary structure of Aβ₄₂.

3.4.2. Aβ₄₂ aggregation kinetic study with *CCMeOH* inhibition

The Aβ₄₂ peptide aggregation kinetics study was conducted by

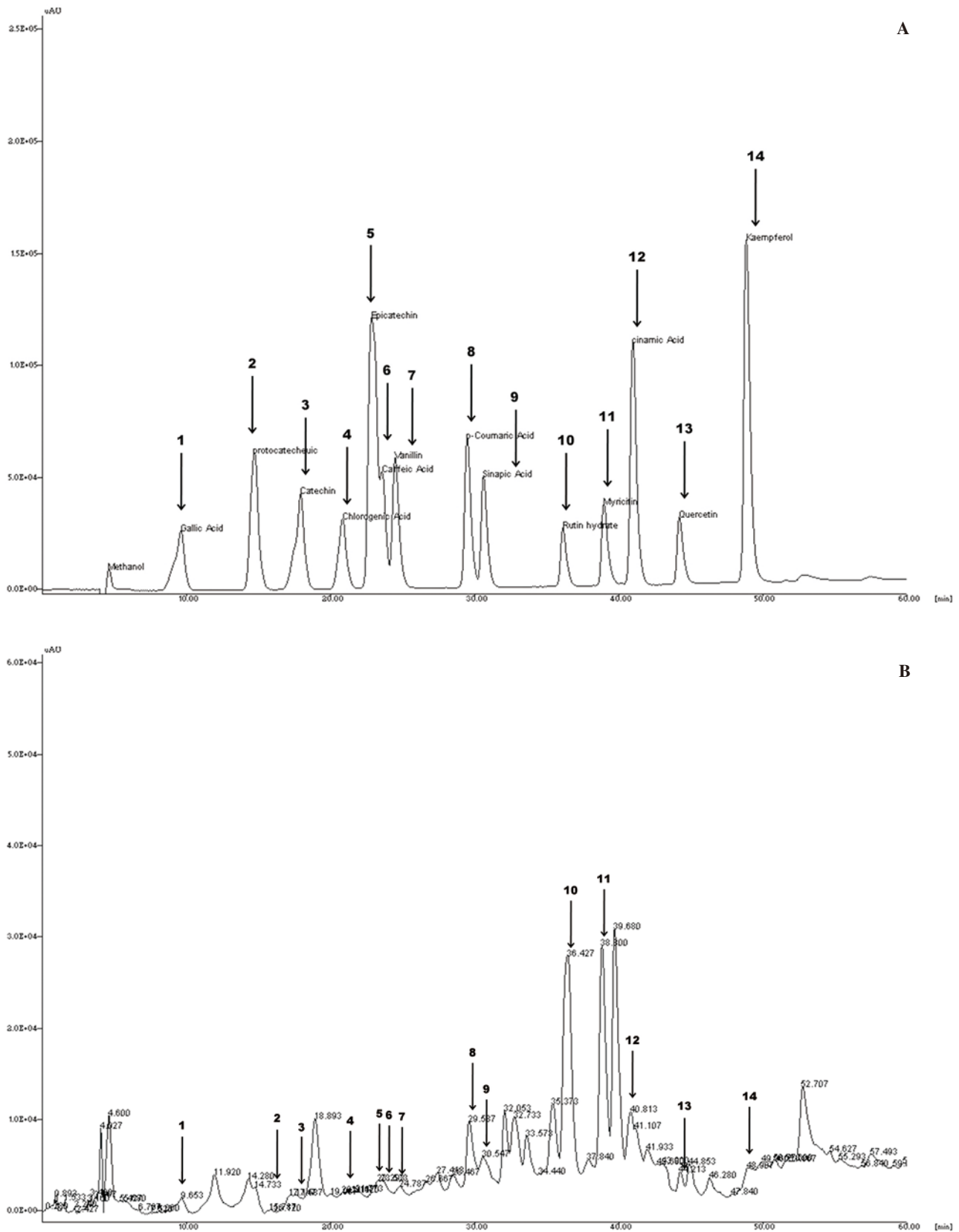


Figure 1. Representative HPLC profiling chromatograms of mixed standards and methanolic extract of *C. crista* traced at 270 nm. A: 20 μ L of authentic standards injected with concentration of 1 mg/mL – gallic acid (1), protocatechuic acid (2), catechin (3), chlorogenic acid (4), epicatechin (5), caffeic acid (6), vanillin (7), *p*-coumaric acid (8), sinapic acid (9), rutin hydrate (10), myricetin (11), cinamic acid (12), quercetin (13), kaempferol (14); B: *CCMeOH* peaks representing identified polyphenols.

following series of stages - misfold, oligomers (dimers, trimers etc) in lag phase and protofibril formation at growth phase, later leading to amyloid fibrils representing sigmoid growth curve of insoluble fibrillar toxic species. As shown in Figure 3a ThT assay,

the activity of *CCMeOH* in inhibiting $A\beta_{42}$ aggregation process was significantly evident. The *CCMeOH* was screened for time lapse studies, where a 25 μ g/mL of the extract was incubated with 25 μ M of $A\beta_{42}$ with time intervals 0, 12, 24, 48, 72 and 120 h. As

time increased, there was an increase in the fluorescence intensity in control $A\beta_{42}$ as that of *CCMeOH* treated with $A\beta_{42}$. This specifies the significant decrease in reduction of amyloid aggregation by *CCMeOH*. These results are also supported by electrogram in TEM analysis which was taken at 24, 48, 72 and 120 h in both control ($A\beta_{42}$) and *CCMeOH* with $A\beta_{42}$ at 500 nm and 200 nm scale. In the Figure 3b, at 24 h (3b1A and 3b2A) of incubation there was globular structure formation but in *CCMeOH* treatment (3b3A and 3b4A) there was a drastic reduction in structural arrangement. At 48 h control (3b1B and 3b2B), a structural network appeared between globular structures but in *CCMeOH* treatment (3b3B and 3b4B), there was an absence of these structure. Observing control (3b1C and 3b2C) and the *CCMeOH* treatment (3b3C and 3b4C) at 72 h, complete structural demodulation was found. At 120 h (3b1D and 3b2D), there was fibrillar structure and in *CCMeOH* treatment (3b3D and 3b4D), there was a significant reduction of structural morphology was observed. This specifies the effective *CCMeOH* role in reduction of amyloid aggregation.

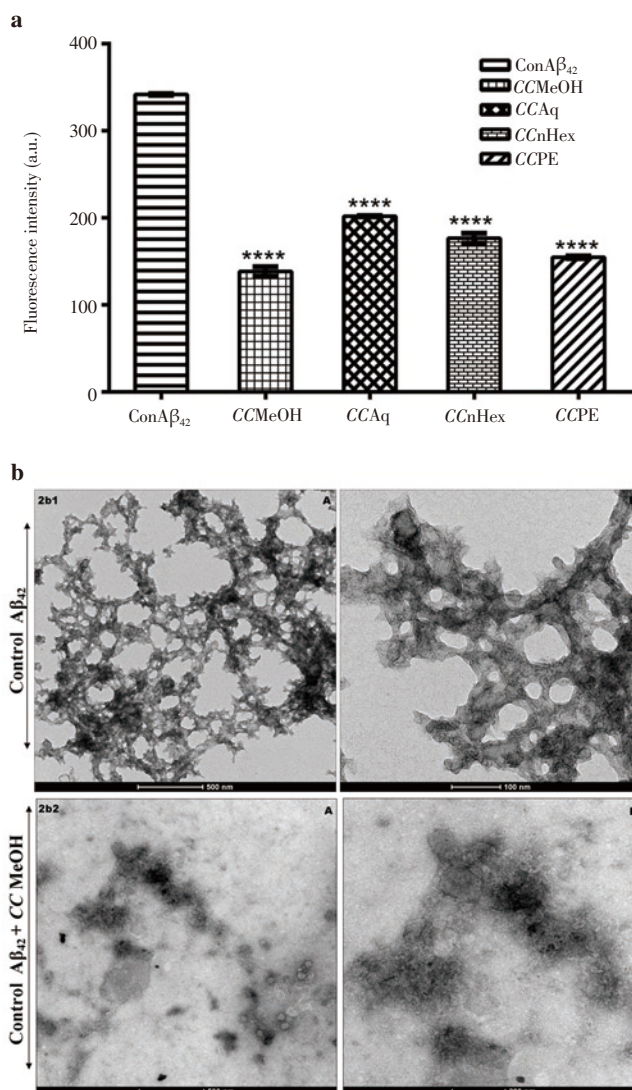


Figure 2. Propensity of *C. crista* extracts in inhibiting $A\beta_{42}$ aggregation. a) ThT assay: $A\beta_{42}$ (25 μ M) incubated with all 4 extracts (50 μ g/mL) for 120 h. Control maintained without extract at pH 7.4 in presence of Tris-HCl buffer ($^{****}P < 0.0001$). b) TEM analysis: 2b1 (A and B) electron micrographs showing $A\beta_{42}$ fibril formation at 120 h and 2b2 (A and B) in the presence of *CCMeOH* extract (100 μ M $A\beta_{42}$:100 μ g extract).

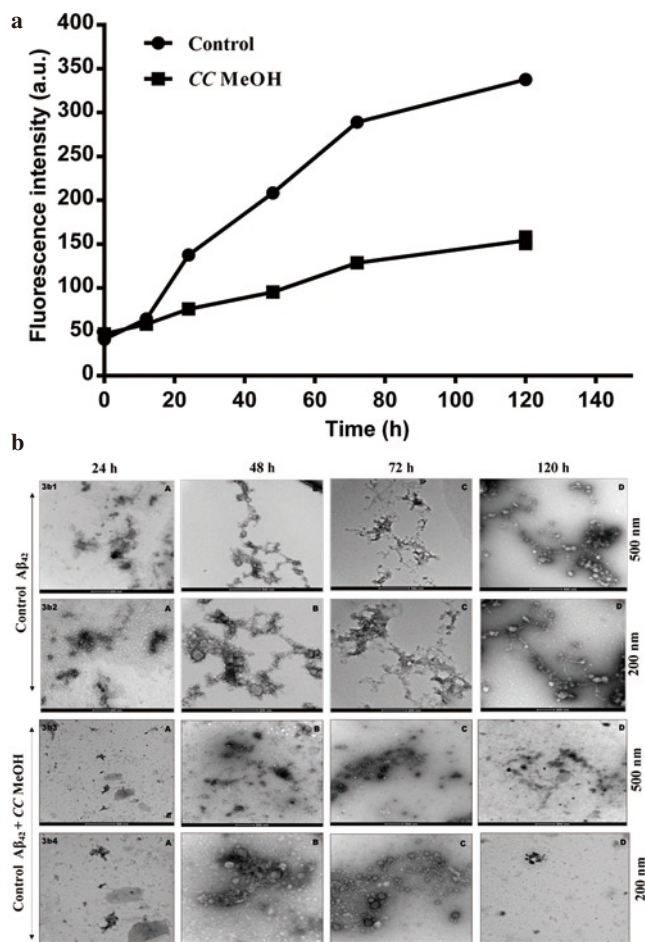


Figure 3. $A\beta_{42}$ aggregation kinetic study with *CCMeOH* inhibition.

a) ThT assay: $A\beta_{42}$ (25 μ M) incubated with *CCMeOH* (25 μ g/mL) at 0, 12, 24, 48, 72 and 120 h. Control maintained without extract at pH 7.4 in presence of Tris-Cl buffer. b) TEM analysis: 3b1 and 3b2 (A to D) electron micrographs showing $A\beta_{42}$ fibril formation from oligomers at 24, 48, 72 and 120 h at 500 nm and 200 nm bar, respectively; 3b3 and 3b4 (A to D) in the presence of *CCMeOH* extract from 24 to 120 h at 500 nm and 200 nm bar, respectively.

3.4.3. Inhibition of $A\beta_{42}$ aggregation to form mature fibrils and defibrillation

Amyloid aggregation studies were carried out for 9 days (9 d) to see activity of *CCMeOH* on mature fibrils and study was performed at 50 μ M:50 μ g of $A\beta_{42}$ and *CCMeOH* co-incubated at 37 $^{\circ}$ C. The ThT assay was shown in Figure 4a. Con $A\beta_{42}$ 9d in which $A\beta_{42}$ was allowed to aggregate has shown increased fluorescence intensity compared to that of Con $A\beta_{42}$ 120h. We have compared 9d with 120h in order to know the increase in fluorescence which specifies the growth of higher structural formation of $A\beta_{42}$ aggregation. There is significant decrease in quenching of fluorescence and is evident in the decrease of fluorescence intensity. In TEM analysis, matured fibrillar structure formation was observed in control $A\beta_{42}$ in Figure 4b (4b1A, 4b1B1 and 4b1B2). The *CCMeOH* treated with $A\beta_{42}$ was shown in Figure 4b (4b2 A and B) both at 500 nm and 200 nm scale. A drastic decrease in structure, only in globular like structure, was observed which was evident from the electrogram. These studies give insights into the possible better activity of *CCMeOH* extract in inhibiting the amyloid aggregation.

In Figure 4a, there was significant decrease in quenching of fluorescence as compared with control Con $A\beta_{42}$ 9d. TEM electrogram

supported the result as in Figure 4c (4c2 A and B) there was a drastic change in structure of amyloid fibril. These observations essentially proved the effectiveness of the extract even in destabilizing the matured fibrils.

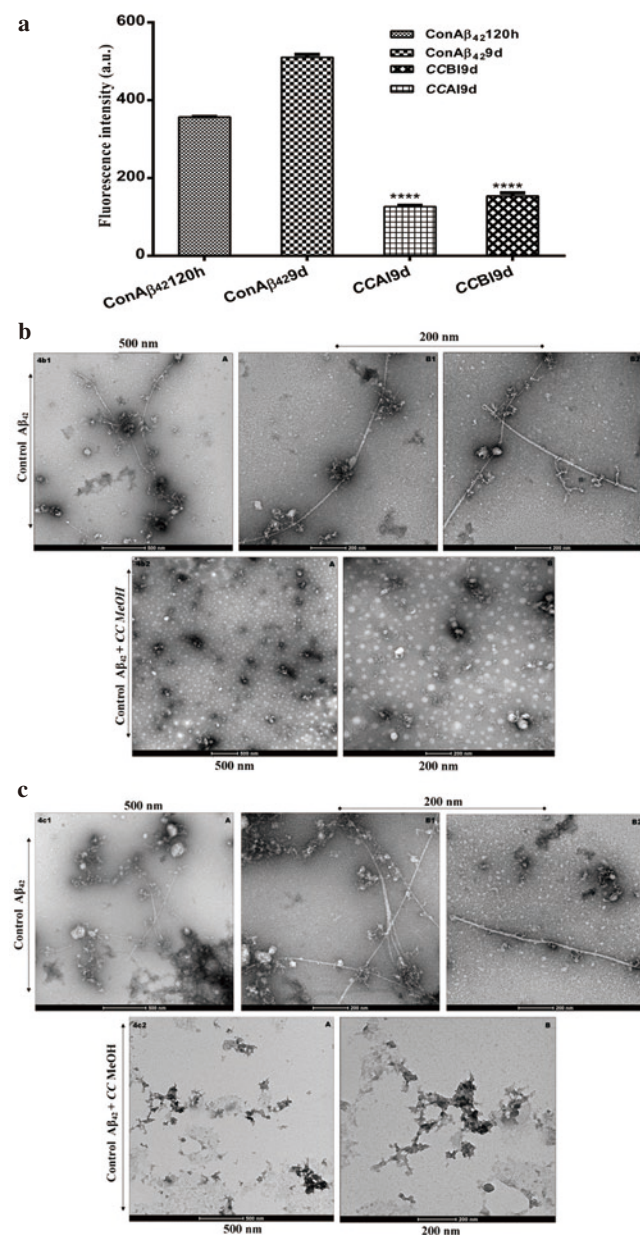


Figure 4. Inhibition of Aβ₄₂ aggregation to form mature fibrils and defibrillation.

a) ThT assay: Aβ₄₂ (50 μM) incubated with CCMeOH (50 μg/mL) for 9 d. Control maintained without extract at pH 7.4 in presence of Tris–Cl buffer. CCAI9d represents incubation of Aβ₄₂ along with CCMeOH to see the inhibition of mature fibrilization. CCBI9d in Figure 4a represents defibrillation when CCMeOH (50 μg/mL) is added to solution containing only 50 μM Aβ₄₂ after 120 h and further incubated till 9 d. (**** $P < 0.0001$). b) TEM analysis: Inhibition of mature fibril formation: 4b1 (A, B1 and B2) electron micrographs showing Aβ₄₂ mature fibril formation and 4b2 (A and B) in the presence of CCMeOH extract. c) TEM analysis: defibrillation of Aβ₄₂ preformed fibrils: 4c1 (A, B1 and B2) control and 4c2 (A and B).

3.5. TLC, LC–MS and GC–MS analysis of CCMeOH

The TLC of CCMeOH extract showed different bands (Figure 5), which shows the presence of various phytochemical presence. For

further study of these phytochemicals, we performed GC–MS and LC–MS. GC–MS analysis of CCMeOH extract was carried out. Peaks obtained were shown in chromatogram (Figure 6) and a total of 26 compounds were identified with their peak number, retention time (RT), area under peak (%) and height of the peak (%) as represented in the Table 4. Most of the identified compounds have medicinal properties. For LC–MS study, the column chromatography was carried out with 60–120 mesh silica. Total of seventeen fractions were collected, among which only sixteenth and seventeenth were brown compared to rest that was yellow or green in color, and were eliminated and subjected to LC–MS along with whole CCMeOH extract. The whole extract of CCMeOH shown in the MS spectra (Figure 7Aa and 7Ab) demonstrated the various peaks represented the presence of phytochemicals that was considered with retention time 3.124 (7Aa) and 5.839 (7Ab) of LC chromatogram. The column fraction of CCMeOH was brown color fraction as in Figure 7B and the MS spectra showed retention time 3.124 (7Ba) and 3.517 (7Bb) of LC chromatogram. Both the spectra mass was compared with help of MSLAMPS database. In Table 5, we could be able to identify thirteen polyketides and one prenol lipids as in Figure 7A showing the MS spectra of RT time 3.124 (7Aa) and 5.839 (7Ab) of LC chromatogram for CCMeOH whole extract. Both the spectra mass was also compared with help of MSLAMPS database. As in Table 6, we could be able to identify nine polyketides for CCMeOH column fraction from MS chromatogram 7Ba and 7Bb. Some of the mass peak in Figure 7B with RT 3.124 (7Ba) MS spectra of CCMeOH column fraction was as same as in CCMeOH whole extract in Figure 7Aa with RT 3.124 (7Aa) which was excluded. Both the whole fraction and column fraction molecules compared with mass number represented indicate the presence of flavanoids like kaempferol, myricitin, catechin, quercetin, chrysofenolol etc. Spectral studies give an insight into the presence of active ingredients present in the extracts which could be isolated, and the studies in detail show the plausible mechanism that may play a vital role in inhibition of pathogenesis of AD.

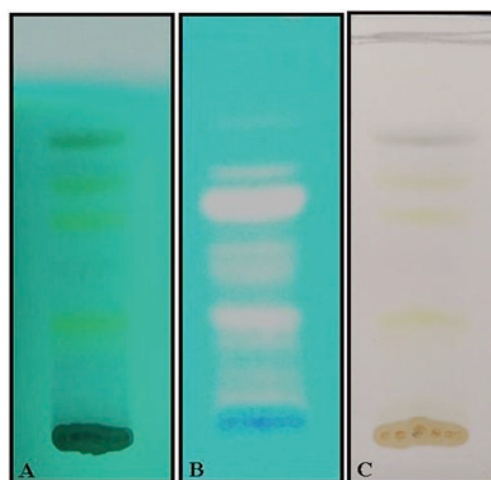


Figure 5. Thin layer chromatographic analysis of CCMeOH extract. A) Long UV, B) Short UV, C) Visible light.

Table 4Chemical ingredients of methanolic leaf extract of *C. crista* by GC-MS.

Peak#	RT	Area%	Height%	Name
1	7.254	0.07	0.53	Decane
2	14.440	1.72	0.67	2,3-Dihydro-benzofuran
3	16.774	8.44	3.08	Resorcinol
4	23.910	0.24	1.11	Megastigmatrienone
5	26.956	58.53	15.94	Mono inositol
6	28.495	1.30	11.81	Neophytadiene
7	28.601	0.17	1.28	2-Pentadecanone, 6,10,14-trimethyl-
8	28.999	0.19	1.90	2-Hexadecen-1-ol, 3,7,11,15-tetramethyl-, [R-[R*,R*-(E)]]-
9	29.374	0.41	3.69	3,7,11,15-Tetramethyl-2-hexadecen-1-ol
10	30.301	0.21	1.81	Hexadecanoic acid, methyl ester
11	31.828	0.28	2.05	Hexadecanoic acid, ethyl ester
12	34.796	1.12	6.65	Phytol
13	36.070	0.11	0.96	n-Propyl 9,12-octadecadienoate
14	36.242	0.24	1.32	9,12,15-Octadecatrienoic acid, 2,3-dihydroxypropyl ester, (Z,Z,Z)-
15	36.997	0.13	0.78	Octadecanoic acid, ethyl ester
16	41.022	0.18	0.99	4,8,12,16-Tetramethylheptadecan-4-olide
17	44.879	0.35	2.66	1,2-Benzenedicarboxylic acid, 1,2-bis(2-ethylhexyl) ester
18	46.825	0.52	1.15	Cholesta-9(11), 20(22)-diene-3, 23-dione, 6-hydroxy- (5.alpha. 6.alpha.)
19	47.100	2.24	7.68	Hexacontane
20	47.269	7.60	11.89	Tetrapentacontane
21	47.455	4.77	10.04	Hexatriacontane
22	51.785	0.92	3.93	Squalene
23	52.563	0.63	1.15	2,8-Dimethyl-2-(4,8,12-trimethyltridecyl)-6-chromanol
24	54.126	2.41	2.61	beta.-Sitosterol
25	55.911	4.43	2.87	beta.-Amyrin
26	60.473	2.79	1.45	Vasicionolone

Table 5Chemical ingredient of methanolic leaf extract of *C. crista* by LC-MS.

Sl. No	Compound name	Input m/z	Exact m/z	Formula
1	Derriobtusone A	291.726 4	292.290	C ₁₈ H ₁₂ O ₄
2	6-Methoxykaempferol	315.703 7	316.265	C ₁₆ H ₁₂ O ₇
2.1	Quercetin 3-methyl ether	315.703 7	316.260	C ₁₆ H ₁₂ O ₇
3	Myricetin 3,3',4'-trimethyl ether	359.763 4	360.318	C ₁₈ H ₁₆ O ₈
3.1	Chrysofenol D	359.763 7	360.318	C ₁₈ H ₁₆ O ₈
4	Catechin 7-O-gallate	441.943 4	442.376	C ₂₂ H ₁₈ O ₁₀
4.1	(-)-Epicatechin 3-O-gallate	441.943 4	442.376	C ₂₂ H ₁₈ O ₁₀
5	Epigallocatechin 3-O-(3,5-di-O-methylgallate)	486.001 7	486.116	C ₂₄ H ₂₂ O ₁₁
6	Demethoxyisogemichalcone C	503.039 9	502.519	C ₂₉ H ₂₆ O ₈
7	Quercetin 7-(6''-tiglylglycoside)	547.093 6	546.355	C ₂₆ H ₂₆ O ₁₃
8	Quercetin 3-(2'',3'',4''-triacylgalactoside)	591.153 2	590.346	C ₂₇ H ₂₆ O ₁₅
9	Acacetin 7-(4''-acetylrutinoside)	635.165 0	634.440	C ₃₀ H ₃₄ O ₁₅
10	Kaempferol 3-(4'',6''-diacylglycoside)-7-rhamnoside	679.259 0	678.431	C ₃₁ H ₃₄ O ₁₇
11	Prephytoenediphosphate	723.312 3	722.925	C ₄₀ H ₆₈ O ₁₂ P ₂
12	Palargonidin 3-(6''-ferulylglycoside)-5-(6'''-malonylglycoside)	855.462 6	855.580	C ₄₁ H ₄₃ O ₂₀
13	Kaempferol 3-neohesperidoside-7-(6''-malonylglycoside)	872.463 1	872.505	C ₃₇ H ₄₄ O ₂₄
14	Quercetin 3-(2''-p-coumarylsambubioside)-7-glycoside	904.515 0	904.550	C ₄₁ H ₄₄ O ₂₃

Table 6Chemical ingredient of methanolic leaf extract fraction of *C. crista* by LC-MS.

Sl. No	Compound name	Input m/z	Exact m/z	Formula
1	Methyl (+)-7-isojasmonate	224.562 6	224.300	C ₁₃ H ₂₀ O ₃
2	Kaempferol 7,4'-dimethyl ether	313.792 8	314.293	C ₁₇ H ₁₄ O ₆
3	3',4'-Methylenedioxy epicatechin 5,7-dimethyl ether	331.821 0	330.110	C ₁₈ H ₁₈ O ₆
3.1	Myricetin 5-methyl ether		332.264	C ₁₆ H ₁₂ O ₈
3.2	Catechin 5,7,4'-trimethyl ether		332.352	C ₁₈ H ₂₀ O ₆
3.3	Epicatechin 5,7,3'-trimethyl ether		332.352	C ₁₈ H ₂₀ O ₆
4	Kaempferol 3-(3'',4''-diacetylramnoside)	516.065 8	516.455	C ₂₅ H ₂₄ O ₁₂
5	Kaempferol 3,7,4'-tri-O-sulfate	526.060 0	526.410	C ₁₅ H ₁₀ O ₁₅ S ₃
6	Myricetin 3-rutinoside	626.048 6	626.520	C ₂₇ H ₃₀ O ₁₇
6.1	Quercetin 7,4'-diglycoside	626.048 6	626.520	C ₂₇ H ₃₀ O ₁₇
6.2	6-Hydroxykaempferol 7-(6''-(E)-caffeylglycoside)		626.523	C ₃₀ H ₂₆ O ₁₅
7	Stigmasteryl ester	679.360 5	649.101	C ₄₇ H ₇₈ O ₂
8	Chrysofenol C 6,4'-diglycoside	684.339 0	684.600	C ₃₀ H ₃₆ O ₁₈
9	8-Prenylquercetin 4'-methyl ether 3-rhamnoside	530.053 4	530.526	C ₂₇ H ₃₀ O ₁₁

4. Discussion

C. crista is a common climber with bipinnate, oblong, obtuse, and mucronate leaves. In ayurveda, it consumed as astringent with a bitter taste[9]. Advances in studies on leaves of *C. crista* have highlighted many activities as discussed above. Our version of current study gives an insight into the fractional study of leaves extracts from non-polar to polar solvent, which can guide for the better active fraction or active moieties for AD at *in vivo* condition. Plants produce various secondary metabolites such as alkaloids, terpenoids sterols, saponins, polyphenols, anthraquinones, glycosides etc. We have quantified the presence of phenolic and flavonoid contents among the four different extracts of *C. crista*. The potential CCMoOH with the highest yield could explain better activity against the oxidative stress and the cholinergic inhibition. The HPLC fingerprinting also showed the presence of gallic acid, protocatechuic acid, catechin, chlorogenic acid, epicatechin, caffeic acid, vanillin, *p*-coumaric acid, sinapic acid, rutin hydrate, myricetin, cinnamic acid, quercetin, and kaempferol.

Mandal et al.,[31] have studied the potential activity of CCMoOH for various other reactive oxygen species such as hydroxyl, superoxide, nitric oxide, singlet oxygen and hypochlorous acid with scavenging activity with IC₅₀ values being 0.44 µg/mL, 24.9 µg/mL, 33.72 µg/mL, 61.13 µg/mL and 170.51 µg/mL, respectively. The CCMoOH also showed iron chelating activity of 279.85 µg/mL. These oxidative activities of CCMoOH pour light on combating the oxidative stress. Oxidative stress caused by Aβ₄₂ is by intercalation of peptide aggregates into lipid bilayer thus resulting in oxidative alteration of proteins and lipid peroxidation[32,33]. Also, the cell model studies have paved evidence of increase in levels of hydrogen peroxide and lipid peroxides upon treatment of Aβ to the cells[34]. AChE is a membrane bound enzyme that has a major role in cognition and the evidences show the role of AChE in amyloidosis, where AChE can colocalize with amyloid aggregates that are present in pre-amyloid diffuse deposits, mature senile plaques, and cerebral blood vessels[35–37]. Interaction of AChE that occurs between the growing Aβ fibrils formed complex thus triggering

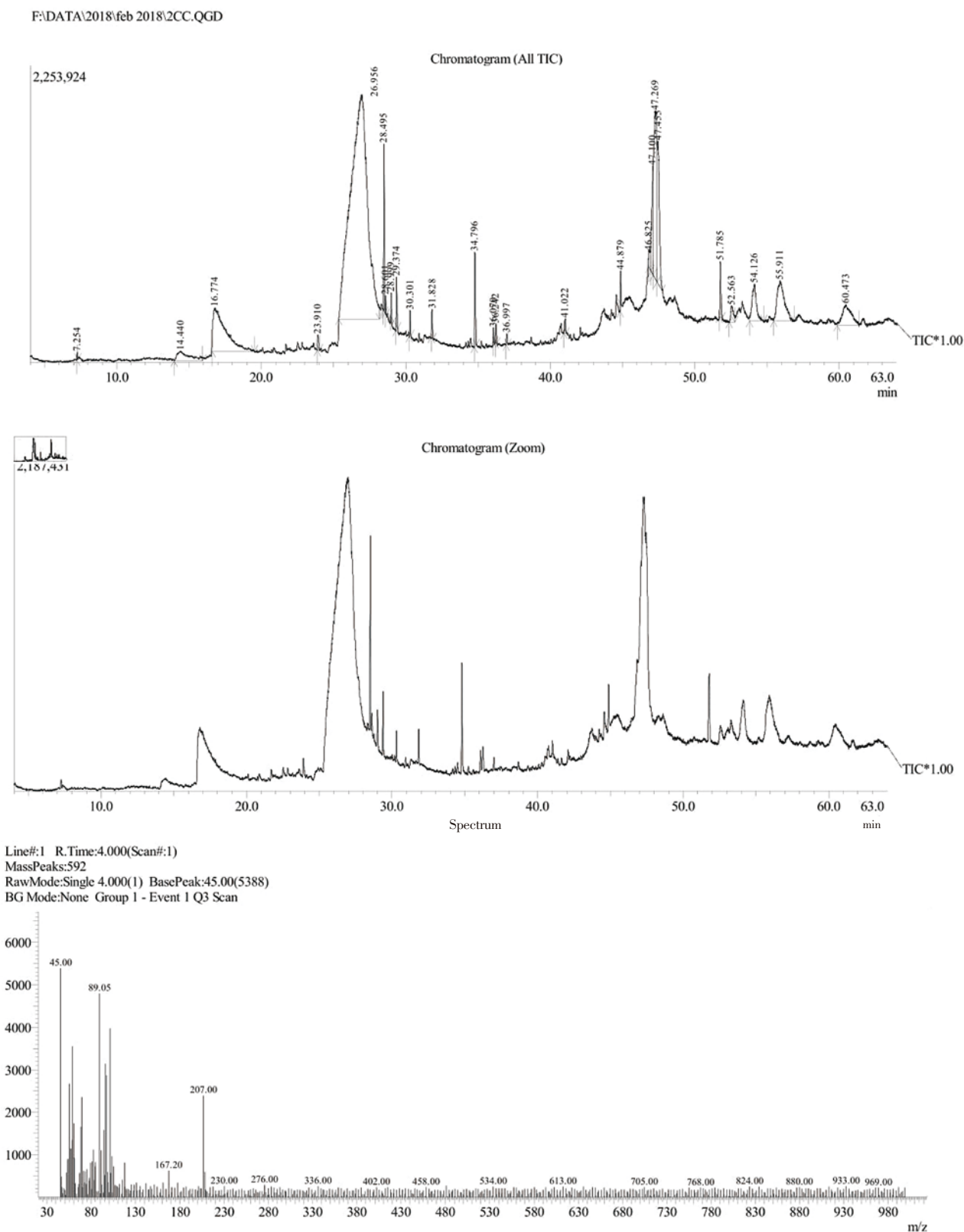


Figure 6. GC–MS analysis of *C. crista* methanolic leaf extract.

the assembly of A β peptides[38]. Suppressing the action of AChE is an essential for reducing the pathogenesis. To suppress AD pathology polyphenols have major role in combating the disease and show potential activities against AChE enzyme. Quercetin, rutin, quercetin 3-glucuronide, kaempferol, myricitin, epigallocatechin, epicatechin, catechin *etc* have shown the AChE and BChE inhibition

activity[39]. Scientific studies have untangled the reason behind the process of amyloidosis. Beta-sheet rich senile plaques structures are the major hallmark in AD. For *in vivo* quantification of these amyloid beta fibrils ThT assay is used, where the fluorescent dye has higher affinity towards fibrillar beta-sheet rich structures inducing red shift in the excitation spectrum, thus increasing the quantum yield which

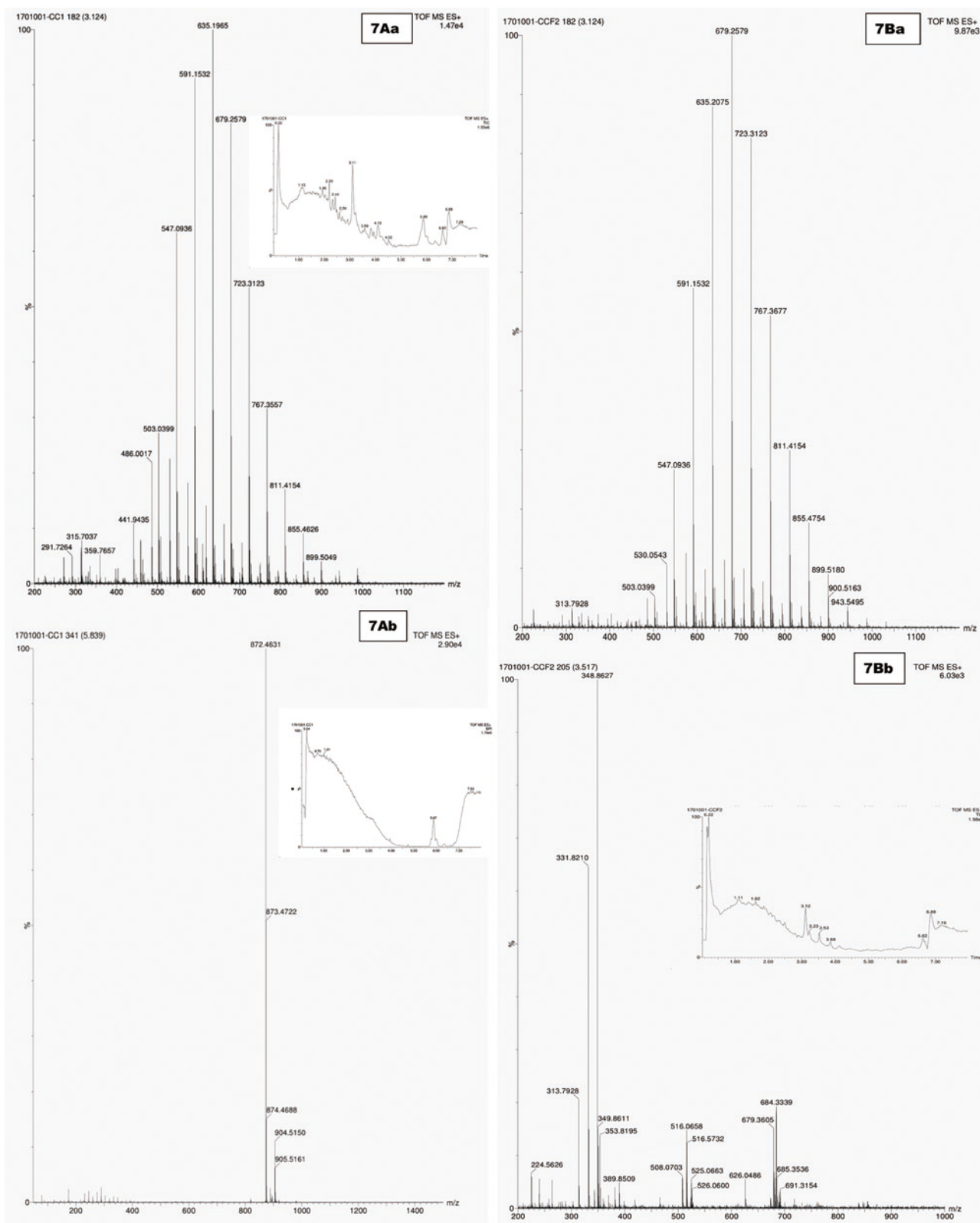


Figure 7. LC-MS analysis of *C. crista*.

(A) *CCMeOH* methanolic whole extract: 7Aa represents RT 3.124 and 7Ab represents RT 5.839; (B) *CCMeOH* methanolic column fraction leaf extract: 7Ba represents RT 3.124 and 7Bb RT 3.517.

helps the study condition in the formation of A β fibrillar structure and its inhibition at *in vivo* condition[40–42]. The reason behind the formation of beta structure of peptides is due to interaction between planar aromatic rings of amino acids forming π - π interactions or π - stacking which plays major role in supramolecular structure like senile plaques. Parallel displaced, T shaped, parallel staggered, or herringbone are the four higher order possible clusters formed by

aromatic rings[43]. Formation of secondary structure is crucial and the elucidation of structural morphology of peptides to senile plaques and its inhibition is an essential approach towards the therapeutic approach. Natural drug therapy has its wider application and positive merits over the synthetic therapeutic treatment. Plants are rich source of polyphenols and various metabolites, over the years scientific

evidences have supported the elucidation and provided proof for the active moieties that have been used to treat various diseases. In kinetic study of $A\beta_{42}$ aggregation myricitin has more significant role in intercalating the conformational transition from monomer to oligomer than defibrillation of aggregation cascade[44]. Kaempferol-3-O-rhamnoside has shown effective activity against neurotoxicity of SH-SY5Y induced by $A\beta_{42}$ and also anti-amyloidogenic property by inhibiting fibrillogenesis and secondary structural transformation of the peptide[45]. Studies on major polyphenols like epicatechin, epigallocatechin, along with the 3-O-gallate esters of epicatechin gallate and epigallocatechin gallate which contained flavan-3-ol unit of catechins in the structure system showed key interaction between $A\beta_{42}$, PrP106-126, and ataxin-3 oligomers inhibition and also presence of gallate has enhanced the activity[46]. All the above detailed studies give an insight towards the potential mechanism of action of structural based interaction in inhibiting the oligomers, protofibrils or mature fibrils. Over the years, plants have gained attraction for finding the drug like candidature for treating the AD. With growing statistics of dementia, it gives the call towards searching or developing the proper therapeutic approach in need to treat the disease. Over the decade, there has been only treatment of mild and moderate condition of AD. Drugs available for symptomatic cure are not sufficient to combating the diseases that is imposing on the society. Natural source could yield the better option for its nutraceutical property. Plants like *C. crista* can be a better option to search the active moieties for multi-targeting drug approach as it exhibits aggregation inhibitory property in addition to cholinergic activity. Various studies show the presence of polyphenols, terpenoids and other metabolites which are potential source of medicinal value. Previous studies have shown whole aqueous extract of *C. crista* leaves as anti-amyloidogenic potential. Accordingly, we have studied from non-polar to polar solvent extract in which the CCMEOH extract has shown better antioxidant, anticholinergic and excellent anti-amyloidogenic property that gives insights to exploring the novel drug-like candidature for AD therapeutics. Thus, *C. crista* could be a potential source of moieties that could possibly have aggregation inhibitory property in addition to the cholinergic activity for treating AD. All in all, the natural products that are rich in polyphenols, and possess multiple functions, might be preferable choices for the cure of AD. The further studies will be involved to know the better mechanistic approach of *C. crista* extracts towards the treatment of AD.

Conflict of interest statement

We wish to confirm that there are no known conflicts of interest associated with this publication and there has been no significant financial support for this work that could have influenced its outcome.

Acknowledgements

Authors acknowledge Jain University, Bangalore for the financial support.

References

- [1] Lansbur PT, Lashuel HA. A century-old debate on protein aggregation and neurodegeneration enters clinic. *Nature* 2006; **443**(7113): 774-779.
- [2] Francis PT, Palmer AM, Snape M, Wilcock GK. The cholinergic hypothesis of Alzheimer's disease: A review of progress. *J Neurol Neurosurg Psychiatr* 1999; **66**(2): 137-147.
- [3] Alzheimer Disease International. *The World Alzheimer report 2015: The global impact of dementia: An analysis of prevalence, incidence, cost and trends*. [Online]. Available from: <https://www.alz.co.uk/research/world-report-2015>.
- [4] Surayawanshi HP, Patel MR. Traditional uses, medicinal uses and phytopharmacological properties of *Caesalpinia crista* Linn-An overview. *Int J Res Pharm Chem* 2011; **1**: 1179-1183.
- [5] Environmental Information system (ENVIS), project of the Ministry of Environment & Forest, Government of India. *Medicinal plants with antimicrobial activity*. [Online]. Available from: http://parisaramahiti.kar.nic.in/medicinal_plants_new/med%20plants/p25.html.
- [6] Murugeswaran R, Rajendran A, Ahamed K, Arunachalam C, Venkatesan K, Thomas B. Potential medicinal plants used in Ayurvedic System of Medicine and their diversity in Southern Western Ghats of Coimbatore District, Tamil Nadu, India. *J Ayu Herb Med* 2016; **2**: 136-145.
- [7] Nadkarni AK, Nadkarni KR. *Indian materia medica*. Popular praashan Bombay; 1976, p. 226-229.
- [8] *The wealth of India: A dictionary of Indian raw materials & industrial products Ca-Ci*. Revised edition. CSIR, New Delhi: Publication and Information Directorate; 1992, p. 6-8.
- [9] Nazeerullah K, Sunil K, Pal SR, Neelam D. A pharmacognostic and pharmacological overview on *Caesalpinia crista*. *Res J Pharm Biol Chem Sci* 2012; **3**: 481-496.
- [10] Kinoshita T, Haga Y, Narimatsu S, Shimada M, Goda, Y. The isolation and structure elucidation of new cassanediterpene-acids from *Caesalpinia crista* L. (Fabaceae), and review on the nomenclature of some caesalpinia species. *Chem Pharm Bull* 2005; **53**: 717-720.
- [11] Chethana KR, Senol FS, Orhan TE, Anilakumar KR, Keri RS. *Cassia tora* Linn.: A boon to Alzheimer's disease for its anti-amyloidogenic and cholinergic activities. *Phytomedicine* 2017; **33**: 43-52.
- [12] Keri RS, Quintanova C, Marques SM, Esteves AR, Cardoso SM, Santos MA. Design, synthesis and neuroprotective evaluation of novel tacrine-benzothiazole hybrids as multi-targeted compounds against Alzheimer's disease. *Bioorg Med Chem* 2013; **21**(15): 4559-4569.
- [13] Chaouche TM, Haddouchi F, Ksouri R, Medini F, El-Haci IA, Boucherit Z, et al. Antioxidant activity profiling by spectrophotometric methods of phenolic extract of *Prasiummajus* L. *Free Radical Antioxid* 2013; **3**(1): 43-46.
- [14] Pallab K, Tapan B, Pal Tapas K, Ramen K. Estimation of total flavonoids content (TFC) and antioxidant activities of methanolic whole plant extract of *Biophytum sensitivum* Linn. *J Drug Delv Therap* 2013; **4**: 33-37.
- [15] Ross K, Beta T, Arntfield S. A comparative study on the phenolic acids identified and quantified in dry beans using HPLC as affected by different extraction and hydrolysis methods. *Food Chem* 2009; **113**(1): 336-344.
- [16] Wagner H, Bladt S. *Plant drug analysis: A thin layer chromatography atlas*. 2nd edition. USA, New York: Springer-Verlag, Berlin Heidelberg; 1984.
- [17] Mondal S, Majumdar S, Geetha V, Gadamsetty G, Lakshmiopathy R, Sheela A, et al. GC-MS and LCMS analysis of ethanolic extract of

- Drypetes sepiaria*. *Malaya J Biosci* 2014; **1**: 207-213.
- [18]Kanthal LK, Dey A, Satyavathi K, Bhojaraju P. GC-MS analysis of bioactive compounds in methanolic extract of *Lactura runcinata* DC. *Pharmacognosy Res* 2014; **6**: 58-61.
- [19]Arulpriya P, Lalitha P, Hemalatha S. *In vitro* antioxidant testing of the extracts of *Samanea saman* (Jacq.) Merr. *Der Chemica Sinica* 2010; **1**(2): 73-79.
- [20]Ellman GL, Courtney KD, Andres V, Featherstone RM. A new and rapid colorimetric determination of acetylcholinesterase activity. *Biochem Pharmacol* 1961; **7**(2): 88-95.
- [21]Ellman GL. A colorimetric method for determining low concentrations of mercaptans. *Arch Biochem Biophys* 1958; **74**(2): 443-450.
- [22]Ingkaninan K, Temkitthawon P, Chuenchom K, Yuyaem T, Tognoi W. Screening for acetylcholinesterase inhibitory activity in plants used in the traditional rejuvenating and neurotonicremidies. *J Ethnopharmacol* 2003; **89**: 261-264.
- [23]Ferreira A, Proenc C, Serralheiro MLM, Araujo MEM. The *in vitro* screening for acetylcholinesterase inhibition and antioxidant activity of medicinal plants from Portugal. *J Ethnopharmacol* 2006; **108**(1): 31-37.
- [24]Fa M, Orozco IJ, Francis YI, Saeed F, Gong Y, Arancio O. Preparation of oligomeric beta-amyloid 1-42 and induction of synaptic plasticity impairment on hippocampal slices. *J Vis Exp* 2016; **14**: 1884.
- [25]Shytle RD, Bickford PC, Rezai-zadeh K, Hou L, Zeng J, Tan J, et al. Optimized turmeric extracts have potent anti-amyloidogenic effects. *Curr Alzheimer Res* 2009; **6**(6): 564-571.
- [26]Gupta VB, Indi SS, Rao KSJ. Garlic extract exhibits anti-amyloidogenic activity on amyloid-beta fibrillogenesis: Relevance to Alzheimer's disease. *Phytother Res* 2008; **23**: 111-115.
- [27]Syad AN, Devi KP. Assessment of anti-amyloidogenic activity of marine red alga *G. acerosa* against Alzheimer's beta-amyloid peptide 25-35. *Neurol Res* 2015; **37**(1): 14-22.
- [28]Moore SA, Huckerby TN, Gibson GL, Fullwood NJ, Turnbull S, Tabner BJ, et al. Both the D-(+) and L-(-) enantiomers of nicotine inhibit A β aggregation and cytotoxicity. *Biochemistry* 2004; **43**(3): 819-826.
- [29]LeVine H 3rd. Thioflavine T interaction with synthetic Alzheimer's disease beta-amyloid peptides: Detection of amyloid aggregation in solution. *Protein Sci* 1993; **2**(3): 404-410.
- [30]Broersen K, Jonckheere W, Rozenski J, Vandersteen A, Pauwels K, Pastore A, et al. A standardized and biocompatible preparation of aggregate-free amyloid beta peptide for biophysical and biological studies of Alzheimer's disease. *Protein Eng Des Sel* 2011; **24**(9): 743-750.
- [31]Mandal S, Hazra B, Sarkar R, Biswas S, Mandal N. Assessment of the antioxidant and reactive oxygen species scavenging activity of methanolic extract of *Caesalpinia crista* leaf. *Evid Based Complement Alternat Med* 2011; **2011**: 173768.
- [32]Lauderback CM, Hackett JM, Huang F, Keller JN, Szweda LI, Markesbery WR, et al. The glial glutamate transporter, GLT-1, is oxidatively modified by 4-hydroxy-2-nonenal in the Alzheimer's disease brain: The role of A β (1-42). *J Neurochem* 2001; **78**(2): 413-416.
- [33]Behl C, Davis JB, Lesley R, Schubert D. Hydrogen peroxide mediates amyloid β protein toxicity. *Cell* 1994; **77**(6): 817-827.
- [34]Ulrich J, Meier-Ruge W, Probst A, Meier E, Ipsen S. Senile plaques: Staining for acetylcholinesterase and A4 protein: A comparative study in the hippocampus and entorhinal cortex. *Acta Neuropathol* 1990; **80**(6): 624-628.
- [35]Geula C, Mesulam MM. Special properties of cholinesterase in the cerebral cortex of Alzheimer's disease. *Brain Res* 1989; **498**(1): 185-189.
- [36]Geula C, Mesulam MM. Cholinergic systems and related neuropathological predilection patterns in Alzheimer disease. In: Terry RD, Katzman R, Bick KL. (eds.) *Alzheimer disease*. New York: Raven Press; 1994, p. 63-291.
- [37]Alvarez A, Opazo C, Alarcón R, Garrido J, Inestrosa NC. Acetylcholinesterase promotes the aggregation of amyloid-beta-peptide fragments by forming a complex with the growing fibrils. *J Mol Biol* 1997; **272**(3): 348-361.
- [38]Butterfield DA, Lauderback CM. Lipid peroxidation and protein oxidation in Alzheimer's disease brain: Potential causes and consequences involving amyloid beta-peptide-associated free radical oxidative stress. *Free Radic Biol Med* 2002; **32**(11): 1050-1060.
- [39]Szwajgier D. Anticholinesterase activities of selected polyphenols-A short report. *Pol J Food Nutr Sci* 2013; **64**(1): 59-64.
- [40]Drochioiu G, Manea M, Dragusanu M, Murariu M, Dragan ES, Petre BA, et al. Interaction of β -amyloid(1-40) peptide with pairs of metal ions: An electrospray ion trap mass spectrometric model study. *Biophys Chem* 2009; **144** (1-2): 9-20.
- [41]Naiki H, Higuchi K, Hosokawa M, Takeda T. Fluorometric determination of amyloid fibrils *in vitro* using the fluorescent dye, thioflavin T1. *Anal Biochem* 1989; **177**(2): 244-249.
- [42]Groenning M, Olsen L, Van de Weert M, Flink JM, Frokjaer S, Jorgensen FS. Study on the binding of thioflavin T to β -sheet-rich and non- β -sheet cavities. *J Struct Biol* 2007; **158**(3): 358-369.
- [43]Gazit E. A possible role for π -stacking in the self-assembly of amyloid fibrils. *FASEB J* 2007; **16**: 77-83.
- [44]Bartolini M, Naldi M, Fiori J, Valle F, Biscarini F, Nicolau DV, et al. Kinetic characterization of amyloid-beta 1-42 aggregation with a multimethodological approach. *Anal Biochem* 2011; **414**(2): 215-225.
- [45]Sharoar M, Thapa A, Shahnawaz M, Ramasamy VS, Woo E, Shin SY, et al. Keampferol-3-O-rhamnoside abrogates amyloid beta toxicity by modulating monomers and remodeling oligomers and fibrils to nontoxic aggregates. *Int J Biomed Sci* 2012; **19**(1): 104-117.
- [46]Sironi E, Colombo L, Lompo A, Messa M, Bonanomi M, Regonesi ME, et al. Natural compounds against neurodegenerative diseases: Molecular characterization of the interaction of catechins from green tea with A β 1-42, PrP106-126, and ataxin-3 oligomers. *Chemistry* 2014; **20**(42): 13793-13800.