

Implementation of PSO & HB Image Enhancement Techniques For Tumor Detection

Nisha Kumari Dogra¹, Maninder Kaur²

¹ M.Tech.Scholar, Doaba Institute of Engineering & Technology, Kharar, Punjab, India.

² Asst. Professor, Doaba Institute of Engineering & Technology, Kharar, Punjab, India.

Abstract:

Image enhancement is a mean as the improvement of an image appearance by increasing dominance of some features or by decreasing ambiguity between different regions of the image. Many images such as medical images, remote sensing images, electron microscopy images and even real life photographic pictures, suffer from poor contrast. Therefore there are many techniques of image enhancement in image processing such as Fast Ostu's method, Histogram equalization (HE) method, Particle swarm optimization (PSO), Honey Bee (HB). In this paper, a new approach to automatic image enhancement using HB is implemented by specifying intensity of the edges pixels and also earlier reported PSO results were used. Further comparatively analysis is performed between HB and PSO results. The obtained results indicate that the proposed HB yields better results in the terms of both the maximization of number of the pixels in the edges and peak signal to noise ratio (PSNR). Computational time is also relatively small in the HB as compared to the PSO.

Keywords — Particle swarm optimization, honey bee and image enhancement.

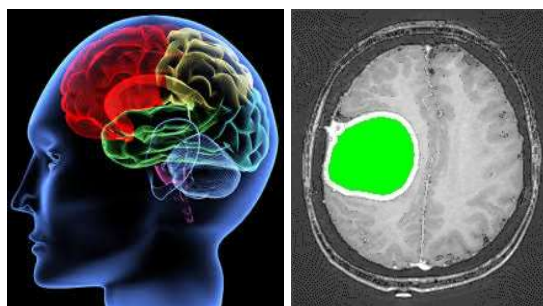
INTRODUCTION

Image enhancement is the simplest and most appealing areas of digital image processing. It is basically improving the interpretability of information in images for human viewers and providing 'better' input for other automated image processing techniques. In the simple way say that the improvement of an image appearance by increasing dominance of some features and get the suitable image at the output. In image enhancement many techniques are available for the enhancement of an image. Those techniques are histogram equalization, genetic algorithm, particle swarm optimization (PSO), honey bee (HB). Swarm intelligence has become a research interest to many research scientists of related fields in recent years. Bonabeau has defined the swarm intelligence as "any attempt to design algorithms or distributed problem-solving devices inspired by the collective behavior of social insect colonies and other animal societies". Bonabeau et al. focused their viewpoint on social insects alone such as termites, bees, wasps as well as other different ant species. However, the term swarm is used in general manner to refer to any restrained collection of interacting agents or individuals. The classical example of a swarm is bees swarming around their hive; nevertheless the metaphor can easily be extended to other systems with a similar architecture. An ant colony can be thought of as a swarm whose individual agents are ants. Similarly a flock of birds is a swarm of birds. An immune system is a swarm of

cells and molecules as well as a crowd is a swarm of people. Particle Swarm Optimization (PSO) Algorithm models the social behavior of bird flocking or fish schooling. Many authors exposed the use of PSO to solve variety of problems in computer science and engineering. In this paper author used HB based enhancement method on medical image for tumor detection. Further results obtained.

STUDY AREA:-

In this paper Brain is used as study area. Brain is a soft, & spongy mass of a tissue. It is protected by, the bones of skull, three layers of tissues and watery fluid which flows within the brain



A. Human Brain

B. Brain Tumor

Figure 1: Study area

Normally cells grows old and or get damaged, finally they die. Sometimes, this doesn't happen as old cells don't die or normal cells are formed when body don't need them. This results in extra growth of cells which forms a tumor. Primary brain tumors can be benign or malignant. Benign tumor does not cause cancer. They can be cured easily as their cells can be destroyed easily. Malignant tumor can contain cancer cells .This type of tumor is more dangerous and life threatening. They grow really fast and get crowded very rapidly in the brain. People can get tumor at any age. There are many symptoms of brain tumor like headaches, nausea and vomiting, changes in speech and vision etc. Radiation therapy kills tumor cells with high energy x-rays, gamma rays, or protons The. other way to cure tumor is chemotherapy i.e. by use of drugs to kill cancer cells. Magnetic Resonance Imaging (MRI) techniques are still developing, and recent efforts have been directed primarily at improving image quality and speed of acquisition. MRI provides non-invasive, high quality images of neuro-anatomy and disease processes. There are many sequences that can be used on MRI and the different sequences often provide different contrast between tissues so the most appropriate sequence should be chosen according to disease. Here simply using morphologic operation detect the tumour and show the coloured tumour at the output. In the detection of tumour image enhancement play important role. In this paper HB is implement of the medical image (Brain) for the TUMOR detection. Honey bee algorithm is used for registration for an image, to obtain the optimal registration. Honey bee algorithm can be used for solving uni-modal and multi-moda numerical optimization problems. Honey bee algorithm is very simple and very flexible when compared to the existing swarm based algorithms. It is also very robust, at least for the test problems .Honey bee mating optimization (HBMO) may also be considered as a typical swarm-based approach for optimization, in which the search algorithm is inspired by the process of mating in real honey-bees. One is that the results of PSO and Fast Ostu □s method are unstable that extraordinary segmentations are generated. Honey bees use a sophisticated communication system that enables them to share information about the location and nature of resources. The honey bee search process is composed of three main activities: exploration ,recruitment and harvest.

Proposed Enhancement Model

There are key steps when applying HB to optimization problems:

1. Place the hive of bees at the center of any place.
2. Here 1000 bees are initialized, all these bees spread from the hive for find the food.
3. When any bee is employed that employed bee came back to the hive by making the path from food place to hive with making white edges.
4. If "yes" then after coming back to the hive, the employed bees spread randomly and follow a new path which is

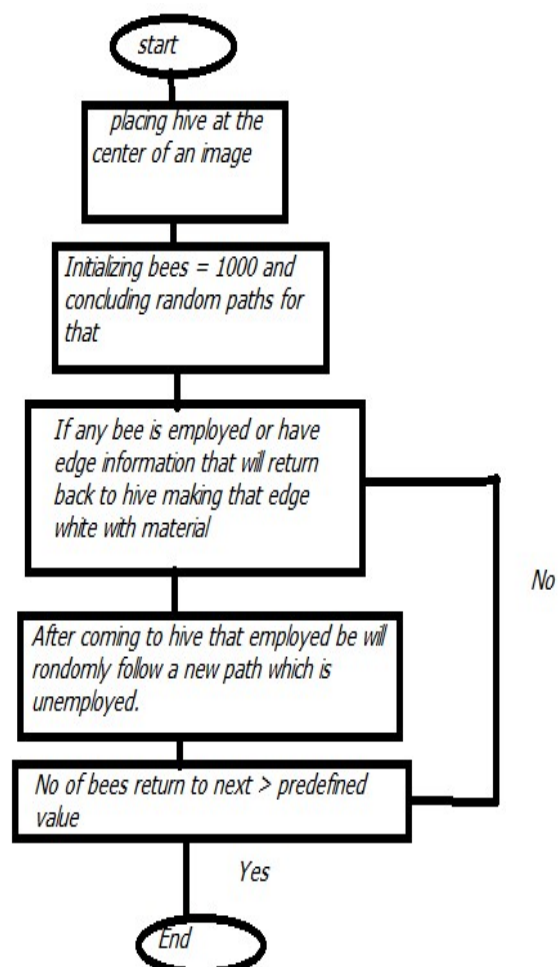
unemployed.

5. If predefined value is less than the numbers of bees returns to next then OK.

6. If "yes" then process is complete.

7. But if "NO" process is not done then this process is again start on the step 3.

Flow chart of honey bee Algorithm (HB)



Results and Discussion

The optimization problem considered in this paper is to solve the enhancement problem using HB. Our objective is to maximize the number of pixels in the edges , increase the overall intensity of the edges and to determine PSNR between new developed algorithm and earlier reported method. In order to evaluate the HB-based enhancement method, we have compared the proposed method with PSO-based enhancement method .For each HB or PSO run we report three values:

- The performances of the algorithms by comparing the

objective evaluation function in terms of PSNR values.

- The computational time per run of each algorithm.
- The efficiency in terms of the number of edges with gives as indication of the performance of proposed algorithm.
- The fitness value using honey bee (HB) is more when compared with the fitness value using PSO for the same for the same number of generations.
- The computational time for PSO based enhancement was found 94.786 seconds whereas the time taken for HB based enhancement was found 10.785 seconds.
- The computational time is less in case of HB when compared with that of PSO.
- The image that contains the highest number of edges pixels can be rated as having high detail contents as shown in Table 1 and table 2.
- One parameter here used peak signal and noise ratio (PSNR) , here after calculate the PSNR

Table 1: Earlier reported values after applying PSO

Image (Brain)	Edges	Time(sec.)	PSNR
Scan1	489	93.58	13.23
Scan2	545	93.69	21.47
Scan3	397	94.79	12.18

Table 2: Values obtained after applying HB

Image (Brain)	Edges	Time(sec.)	PSNR
Scan1	2417	10.76	17.38
Scan2	4756	10.63	21.47
Scan3	1982	10.78	17.31

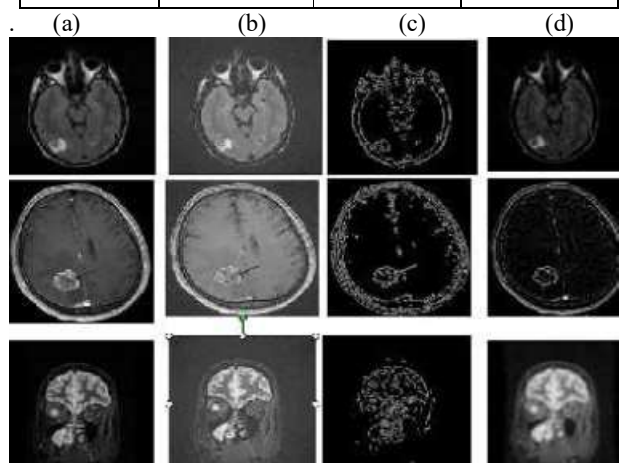


figure 3: (a.) Original image (b) enhanced image(c) edges (d) PSO enhanced image

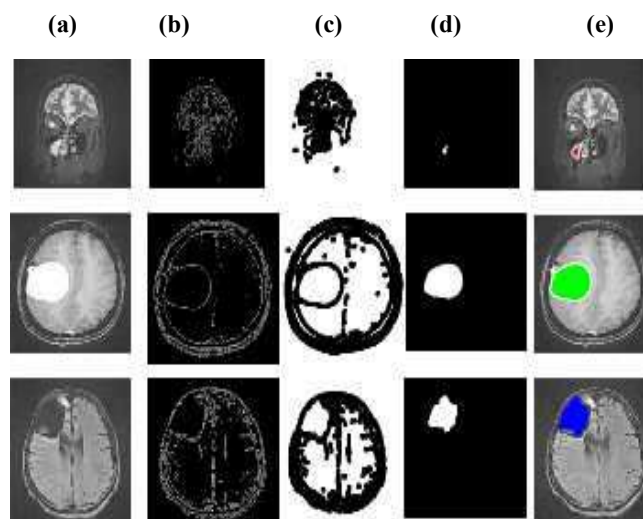


Figure 4. (a) Enhanced image (b) Edges (c) Background change (d) Only Tumor (e) Colored tumor

Table 3: Comparison of edges b/w PSO and HB

Image (Brain)	Edges	Edges(HB)	Edges(PSO)
Scan1	1577	2417	489
Scan2	2972	3626	545
Scan3	1028	1982	397

Table 4: Comparison of Time duration of PSO and HB

S. No.	Image (Brain)	Time(HB) Seconds	Time(PSO) Seconds
1	Scan1	10.75	93.63
2	Scan2	10.62	93.57
3	Scan3	10.78	94.78

Conclusion:-

In this paper, a new optimization algorithm based on intelligent behavior of honey bee swarm has been described. The new swarm algorithm is very simple & very flexible when compared to the existing swarm based algorithms. The objective of the algorithm was to maximize the total number of pixels in the edges thus being able to visualize more details in the images. The algorithm is tested on medical images for

tumor detection. The results obtained are tabulated and compared with the results earlier reported using PSO. It is clear from the obtained results that the proposed HB based image enhancement is better than the PSO based image enhancement in terms of quality solution and computational efficiency. The proposed HB based image enhancement method may be extended in several ways, such as: fine tuning of the HB parameters in order to reduce the number of particles and reducing the maximum number of iterations.

ACKNOWLEDGMENT

The author is very thankful to Assistant Professor Maninder Kaur for her constant motivation and support. Also, for providing technical supports during preparation of the manuscript.

REFERENCES

- [1] J. Kennedy, R. C. Eberhart, and Y. Shi, *Swarm Intelligence*. Morgan Kaufmann Publishers, San Francisco, 2001.
- [2] J. Kennedy and R. C. Eberhart, "Particle swarm optimization," *Proceedings of IEEE International Conference on Neural Networks (Perth, Australia)*, IEEE Service Center, Piscataway, NJ, vol. 5, no. 3, pp. 1942–1948, 1995.
- [3] M. A. Talal and A. A. Mohamed, "Simulation-based optimization for repairable systems using particle swarm algorithm," *Proceedings of the 2005 Winter Simulation Conference*, Department of Statistics and Operations Research Kuwait University, 2005.
- [4] Braik, M. (2007), "Image enhancement using particle swarm optimization", *Proceedings of the World Congress on Engineering 2007*, London, U.K, Vol I, WCE July 2 – 4, 2007.
- [5] Chen Wei Fang Kangling (2008), "Multilevel Thresholding Algorithm Based on Particle Swarm Optimization for Image Segmentation", *Proceedings of the 27th Chinese Control Conference* July 16-18, China, 2008.
- [6] Te-Jen Su, Tzu-Hsiang Lin, Jia-Wei Liu (2008), "Particle Swarm Optimization for Gray-Scale Image Noise Cancellation", *International Conference on Intelligent Information Hiding and Multimedia Signal Processing*, pp. 1459-1462, 2008
- [7] Kennedy, J. and Eberhart, R. C. (2001), "Swarm Intelligence", Morgan Kaufmann Publishers, San Francisco, Calif, USA, pp. 69-73, 2001.
- [8] Fledelius, W. and Brian H. Mayoh (2006), "A swarm based approach to medical image analysis", in *AIA'06: Proceedings of the 24th IASTED international conference on Artificial intelligence and applications*, Anaheim, CA, USA, ACTA Press, pp. 150–155, 2006.
- [9] F. Maes, A. Collignon, D. Vandermeulen, G. Marchal, and P. Suetens, "Multimodality image registration by maximization of mutual information," *IEEE Trans. Med. Imaging*, vol. 6, pp. [87-]98, no. 2, 1997.
- [10] J. P. W. Pluim, J. B. A. Maintz, and M. A. Viergever, "Mutual information-based registration of medical images: A survey," *IEEE Trans. Med. Imaging*, vol. 22, pp. 986-1004, no. 8, 2003.
- [11] Dervis KARABOGA- "AN IDEA BASED ON HONEY BEE SWARM FOR NUMERICAL OPTIMIZATION" Erciyes University, OCT 2005.
- [12] The detection and visualization of brain tumors on T2-weighted MRI images using multi parameter feature blocks Phooi Yee Lau, *Student Member, IEEE*, Frank C. T. Voon, and Shinji Ozawa, *Member, IEEE (2005)*.