

INVESTIGATION OF THE EFFECT OF MOBILE NUMBER PORTABILITY ON NETWORK SWITCHING CAPACITY IN NIGERIA

D. E. Basseyy., A. P. Orim., and S. Ekwe.

Department of Physics,
University of Calabar, Calabar,
Cross River State, Nigeria.

basseyye1@yahoo.com

Abstract- Mobile Number Portability is the aptitude of a subscriber to change his / her Network Provider (NP), without losing his / her original Mobile Station Integrated Services Digital Network (MSISDN) number. This laudable process was recently introduced into the Nigerian Telecommunications environment, in view of its impact on competition and quality of service among various Network Providers (NPs). Ironically, the initial excitement it generated gradually faded. More than four years after its introduction, the statutory agency, the Nigerian Communication Commission has not made any statement on the success or failure of the exercise. In view of this, this study resorted to modeling a similar environment to investigate the switching capability of mobile network operators transacting this porting regime. The assumption made was that all calls (seeds) were successfully originated and routed using SS7 protocol. The model was framed after taking cognizance of how the signaling traffic was routed for real-time services under a certain bandwidth switching capacity. Among other key performance indicators, the exercise indicated congested switching nodes: an indication that porting activities will introduce traffic congestion if the operational channels are not expanded to accommodate high traffic generated through porting activities. The study collaborates the reasons for the unimpressive performance witnessed on the Number Portability programme in Nigeria.

Keywords: Donor network, Mobile network operators, Number portability, Originating network, Switching capacity.

3. INTRODUCTION

1.1 Mobile Number Portability in Nigeria.

The introduction of Mobile Network Portability (MNP) in Nigeria was welcomed with great expectations; arguably, to bring in the needed competition among the various Network Providers (NPs), and above all, form the needed catalyst to commit operators on Quality of Service (QoS) delivery. Ironically, more than four years after its introduction, the Nigerian Communication Commission has not made any policy statement on the success or failure of the exercise. Besides, the initial excitement it generated has gradually faded. MNP is the ability of a subscriber to change his / her Network Provider (NP), without losing his / her original Mobile Station Integrated Services Digital Network (MSISDN) number [14]. Prior to the introduction of MNP, if a subscriber is dissatisfied with the Quality of Service (QoS) of his/her NP, the individual is left with the option of continuing with that NP in order not to lose contact with friends and associates who are familiar with that MSISDN number, or acquire a new MSISDN number from another NP [7]. The ported MSISDN belongs to a set of static assigned number block, which was earlier assigned to the donor NP [19]. When ported successfully, the ported MSISDN shall be served by the recipient NP [1]. There are three types of Number Portability. They are:

- (i) Service Portability: This is a situation where a subscriber can change from Fixed to Mobile Line or vice versa, and from Public Switched Telephone Network (PSTN) to Integrated Services Digital Network (ISDN) [11].
- (ii) Service Provider Portability: This can be referred to as the changing of a subscriber from one NP to another (i.e. Mobile to Mobile or Fixed to Fixed) [5].
- (iii) Location Portability. This happens when a subscriber changes his geographical location.

A significant amount of work is required technically to implement number portability due to the restructuring of the telecommunications infrastructure [13]. This restructuring may involve creating a new database and selecting or implementing different routing methods for various types of calls and messaging services [9].

This work focuses on the second model of Number Portability and therefore limits the study to the effect of MNP on network switching capacity in Nigeria.

1.2 MNP Routing Schemes

MNP means moving from one NP to another without losing your MSISDN number. This transaction involves three parties such as [2]:

- (a) Donor Network: The NP who initially assigned the MSISDN number to the subscriber.

(b) Originating Network: The NP which originates a call to a ported MSISDN number.

(c) Recipient Network: The new NP which is the new host of the ported MSISDN number.

For the purpose of simulating the Nigerian model, consideration was given to the donor network, originating network and recipient network; which are usually from different NPs [3].

From the definitions above, one can see that the Donor network of a subscriber does not change, and the Recipient network does not need to allocate another MSISDN number to the ported SIM. Also, the MSISDN number does not depend on the network hosting the ported number. The role of the mentioned parties varies and a particular NP can play more than one role at a time [12].

4. LITERATURE REVIEW

The importance of MNP on the deregulation wave sweeping the telecommunications sector cannot be overemphasized. [4] while researching on the effect of mobile number portability on consumers in South Africa, observed that strengthening the regulatory environment is required in order to ensure fair competition and consumer protection. He noted that there were gaps in respect of the MNP regulation due to weak regulatory frame-work. According to him, the regulatory body lacked the capacity to enforce and monitor compliance. [6] conclusion was based on analyses from 38 countries (1999 to 2004), that: when the quality of service was put together with ported lines, it had an impact on the switching capacity and average prices. In some countries, MNP was associated with increased switching cost, congestion and lower prices; especially for countries with porting times lower than five days. Countries with less stringent porting times have not experienced churn or revenue effects [8]. The routing scheme and the porting times affect the success of MNP in any country. Other examples are as follows: the telecommunications' regulator in Chile, introduced Mobile Number Portability (MNP) in January 2012, and by June 2013, it recorded 616,686 pre-paid subscribers and 480,571 post-paid customers who successfully ported their numbers to their choice carriers[15].Ghana's National Communication Authority (NCA) introduced MNP on 6 July 2013, one year after the introduction of MNP, about 370,107 mobile numbers ported successfully, representing 1.6 per cent of the total active mobile numbers in the market [17]. Following the introduction of MNP in Colombia, by August 2011, a total of 441,163 customers have switched providers. The greatest concentration of ports was in the first quarter of 2012, when 167,914 people moved operators, while the number dropped to 132,344, the next quarter [22]. India unveiled MNP in November 2010, and two months later in January 2011, 1.7 million of over 200 million subscribers had ported [18].When MNP was introduced in UK in 1999, it took 25 days to port. Before April 2011, porting time reduced to two days [20]. Efforts have been made to reduce it to 24 hours, while in Ecuador, a total of 29,029 requests by subscribers to port their numbers had been received by January 25, 2010, and exactly one year after MNP was introduced in the country[21].The number in Brazil was even higher, with 3.48 million of 210 million subscribers seeking to port, just six months after MNP was unveiled; while Romania, which introduced MNP in October 2008, recorded over 31,000 subscribers porting by February of the following year. Presently [23]. Nigeria's regulator has not made any official statement on the number of ported lines and the success rate recorded so far. In view of this, this study resorted to modeling a similar environment to investigate the switching capability of mobile network operators transacting this porting regime.

3. CONCEPTUAL FRAMEWORK

3.1 Modelling

Different seeds of subscribers seeking MNP services were simulated and the time taken to access different switching nodes of the Donor NP through to the Recipient NP was recorded using the simulation's tool-kit. The assumption made was that all calls (seeds) were successfully originated and routed using SS7 protocol [4]. The model was framed after taking cognizance of how the signaling traffic was routed for real services under a certain bandwidth switching capacity [8]. Also consideration was given for multiple network-provider environment; noting that the donor NP and recipient NP belonged to different operators. This scenario was chosen in line with the Nigerian Telecommunications environment. The simulation task was accomplished using Packet tracer software to simulate the porting processes and in some cases one or more components were substituted with a component in the stimulating software to give a general scenario of the integrated network. The software used and the routing model employed are discussed briefly.

3.1.1 Routing models

The SS7 network scenario was used from the interconnection of the various components on the network. The switching protocol considered in this case was to ease possible traffic congestion that may be experienced during porting processes [16]. Two NPs were considered in designing the model; since they were the minimum subscribers' interface required for an MSISDN number to be ported. This made the SS7 architecture scaled down to have the same signaling points and links. The SS7 used the signaling protocols known as the Transaction Capabilities Application Part (TCAP) routing protocol [6].

3.1.2 Simulation software

Going by the aim of this research work: to find out the performance impact of MNP on the switching capacity of the Donor or Receptor network in Nigeria, the study relied on estimation since the NCC refused to supply empirical data even after conscientious efforts were made [21].The software used for simulation is the Packet Tracer software. Packet Tracer provided the convenient environment to construct and stimulate traffic flow scenario using variable inputs similar to what is obtained during real-time signal

flow [17]. The TCP IP protocol was used in the Packet Tracer simulation. The design model focused on the SS7 protocol used by GSM networks [10].

3.2 Method

The method employed by this study was first designing the signal flow diagram and there after the process flow was developed. This was followed by the creation of the design scenario.

3.2.1 MNP signaling process flow.

In view of the inability to get traffic process flow data from MCH due to non-authorization from NCC, the study relied on the following key assumptions:

- (i) The recipient NP sent a porting request to the MCH after the subscriber has filled the porting request form.
- (ii) The recipient NP advised the subscriber to send an SMS to the MCH through his Donor NP to the MCH.
- (iv) The MCH sent a request for the subscriber's profile to the Donor NP.
- (v) The Donor NP released details of the subscriber's profile and confirmed that porting activity commenced.
- (v) The MCH wrote the details of the subscriber in her NPDB.
- (vi) The MCH sent a porting response to the recipient NP permitting the subscriber to activate the Subscriber.
- (vii) The MCH informed the subscriber through the Donor NP to switch of his phone and there after started using his new NP.
- (viii) The MCH controlled and administered the porting process as illustrated in Figure 1 in the MNP Signal Process Flow Diagram modelled after the simulation activities.

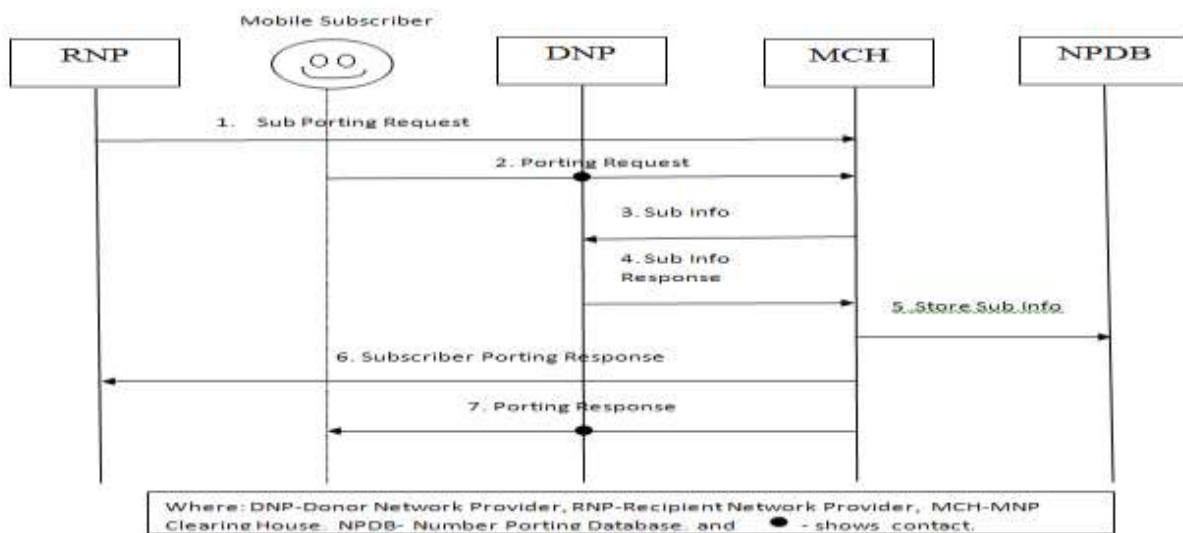


Fig.1: MNP signal process flow diagram

3.2.2 MCH process flow.

The MCH process flow tabulated in Fig. 1 and fig.2 were through the format explained below:

When signal arrive the MCH, it decides what action to take next; depending on its operating state. If it is idle, it goes straight to execute the signal. And if it is in the process of writing on the NPDB, it sends the signal to the hold-process. Finally, if it is in the process of executing the last signal, it sends the signal to the wait process. Figure 2 is the flow diagram of MCH.

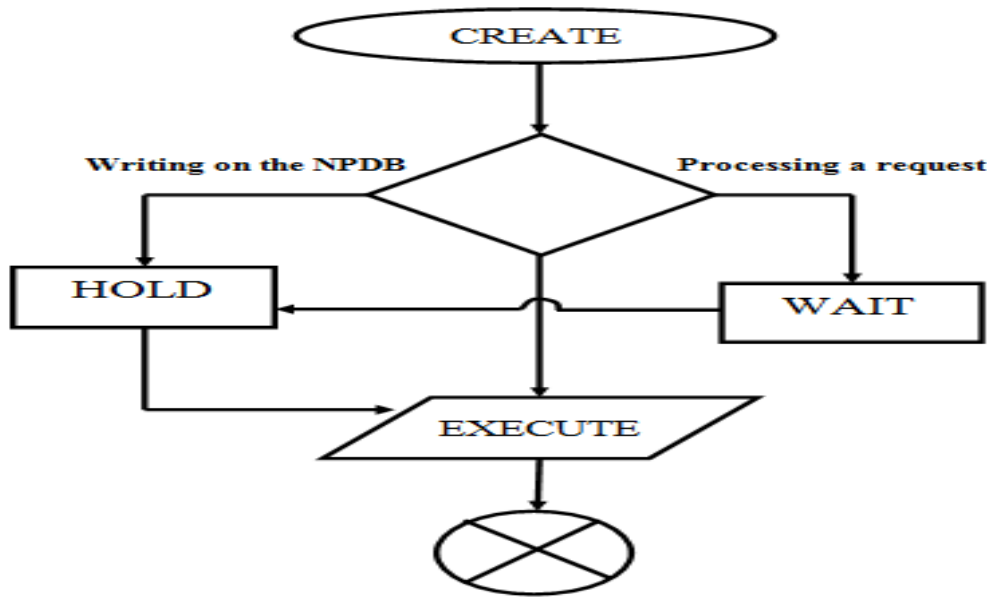


Fig.2: MCH Flow Diagram

3.2.3 Simulation design

The simulations were processed by using the tool-kit for traffic modelling in Computer and Telecommunication networks. MNP message exchanges from the subscribers and their routing functionalities to the end point were simulated in order to compare the impact of performance of each routing scheme under SS7 signaling mode [3]. Consideration was given to the fact that Number Portability occurs using the facilities of two network operators (RNP and DNP). The message goes through these switching nodes to reach the Donor NP. Then, the Donor NP will first check whether the called party directory number is in the directory. With the updated routing information, the call is forwarded to the recipient network.

This therefore brings to fore the primary task of this model: to study the routing of MNP transaction through the host network to the recipient, and finally to the subscriber. All these signaling and switching nodes were considered during the simulation processes [11]. The components chosen on the Packet tracer environment were as close to the real scenario as possible; though assumptions were made in order to trace the signal flow. The diagram in Figure 3 shows the MNP signal processes. The figure illustrates the signaling processes and inter-partner relationship.

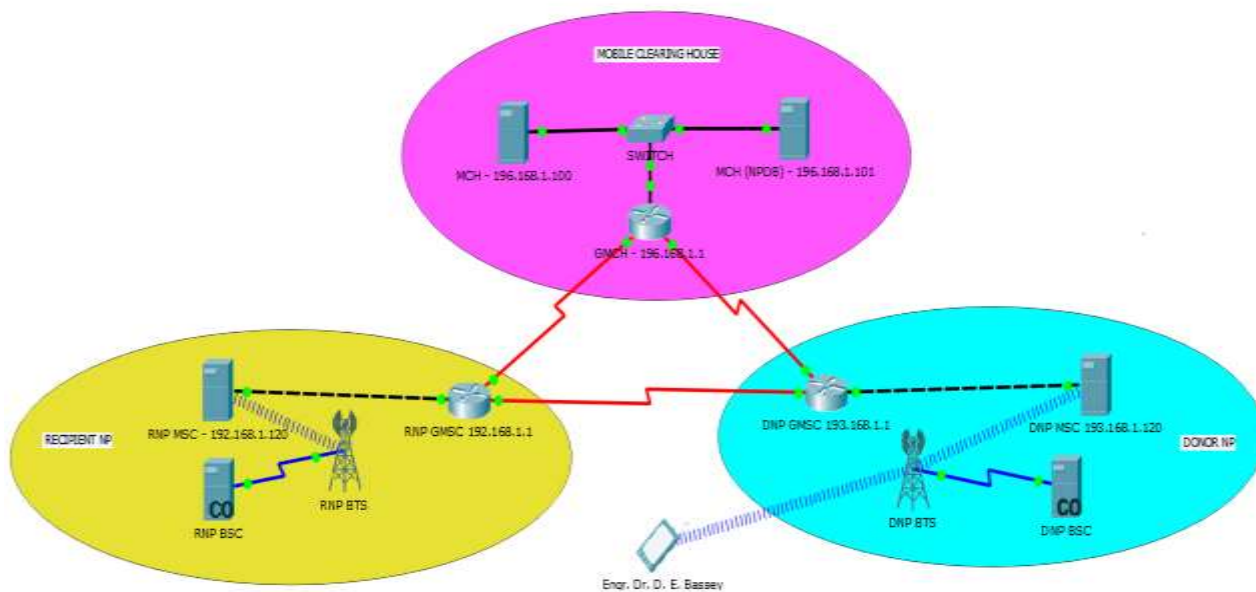


Fig. 3: Interworking reference model

3.2.4 Design Scenario

The design was tested from point to point to check for connectivity of all components on the Packet Tracer environment. The design was simulated following the MNP signaling process flow with the assumptions that signals were transmitted from the MSC. The processes followed are as follows:

The signal packet leaves the Recipient NP to the MCH. The MCH waits for the request from the Subscriber, which comes through the Donor NP. The MCH on receiving the request from the subscriber conducts confirmation that the subscriber is still in the Donor NP network, and further request for the profile of the subscriber. The Donor NP sends both the confirmation and the subscriber's profile to the MCH. The MCH writes the subscriber's profile on NPDB and there-after sends an authorization to the Recipient NP to activate the subscriber on the network. The MCH sends another message to the subscriber to initiate a hard reset in order to activate it on the Recipient NP. This MNP signaling process flow was design to monitor some parameters in some components like the MSC, GMS, NPDB.

3.3 Parameters

Five distinct parameters were employed during the simulation process. They are presented as follows:

- Average arrival rate of in-coming transactions (λ_{calls}):

$$\lambda_{\text{calls}} = 1/t_{\text{calls}}, \quad (1)$$

where t_{calls} is the average inter-arrival time of incoming signal.

- Average service rate of the network operator:

$$(\mu_{\text{netServ}}): \mu_{\text{netServ}} = 1/t_{\text{netServ}}, \quad (2)$$

where t_{netServ} is the average service time from the links to the network operator.

- Average processing rate at the NPDB (μ_{dbServ}): $\mu_{\text{dbServ}} = 1/t_{\text{dbServ}}$, (3)

where t_{dbServ} is the average processing time from the links to NPDB.

- External link delay (τ_{exLink}): This simply refers to the delay experienced on the out-door links of the operator's network. That is from the donor network to the recipient network or from the originating network to the centralized NPDB (which in the case of this research work was induced). The scenario presented in this study is based on analyses carried out in terms of seeds. Seeds in this case refers to a group of subscribers modeled after real traffic scenario.

4.0 RESULTS AND DISCUSSION

The Figures presented below show the forward routing scheme in the simple model adopted for this study. The following results were obtained from the simulation of one to hundred subscribers under different switching conditions. When a request for MNP was originated, a message was generated to the Donor NP to set up a call segment carrying information which includes the called party number and the routing label. In addition, different routing nodes that passed through the traffic were examined. Figure.4 presents the models for MNP routing schemes for one subscriber. The transaction was analyzed by measuring the arrival time for each transaction and the number of switching nodes the MNP traffic accessed. Fig. 4 to Fig. 8 show results obtained after simulating a traffic scenario carrying one, ten, fifty, and hundred porting requests. These seeds (subscribers) were varied and analyzed based on the time taken for the MNP request to access a switching node of each network and the total number of nodes accessed after completion of the porting process.

4.1 Simulation for One Subscriber

The following results were obtained for the simulation of one subscriber. Figure 4 shows that more switching activities took place on the Donor network compared to the Recipient network. The resources of the MCH were more utilized due to its control and administrative role on the transaction. The graph also shows the arrival time for one subscriber; indicating the point to point arrival time for the various switching nodes accessed during the porting process.

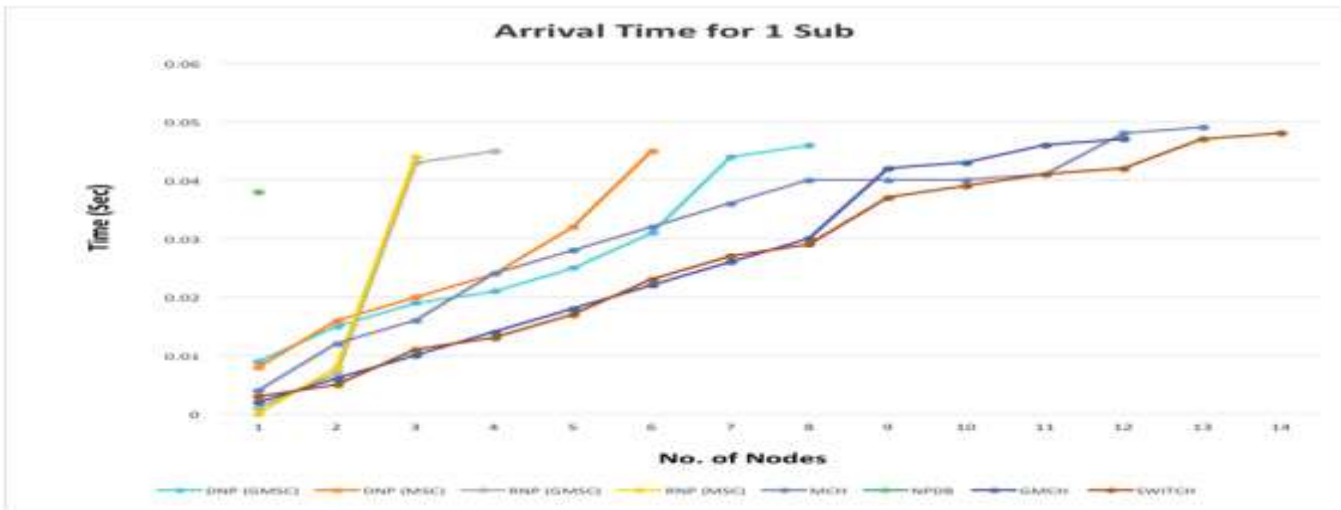


Fig. 4: Graph of arrival time for one subscriber



Fig. 5: Graph of activity rate for one subscriber

As shown in Fig. 5, more activities took place in the Donor NP than the Recipient NP during the porting process. The MCH has the highest number of activities as it serves as the control and administrative centre for the process

4.2 Simulation for Ten Subscribers

The graph in Fig. 6 shows the arrival time for seeds of ten subscribers (summary). It indicates a different dimension from the last report. Traffic usage time was shorter; an indication that the transaction was allotted more time than when they were fewer subscribers. This further shows the capacity of the switching facility to efficiently accommodate fewer subscribers than when they are many.

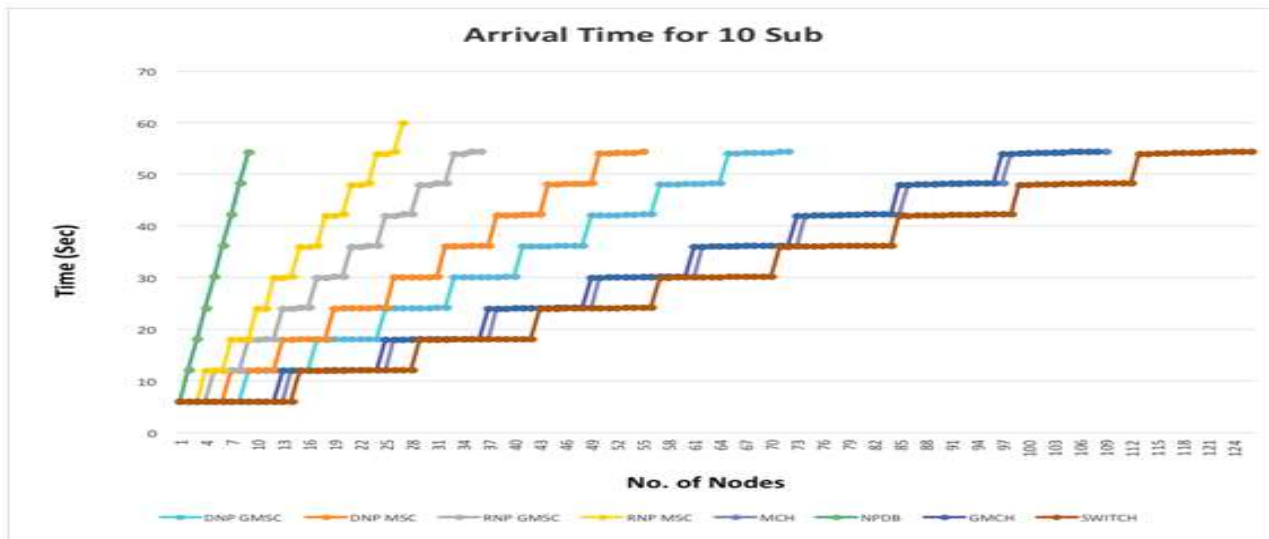


Fig. 6

4.3 Simulation for Fifty Subscribers

The graph in Fig. 7 shows a different dimension in the arrival time for a seed of fifty subscribers. This phase of traffic transactions reduced gradually with time due to the increase in the number of processes that took place at various nodes. The number of seeds selected were a summary of the total seeds (50) used for this class of simulation.

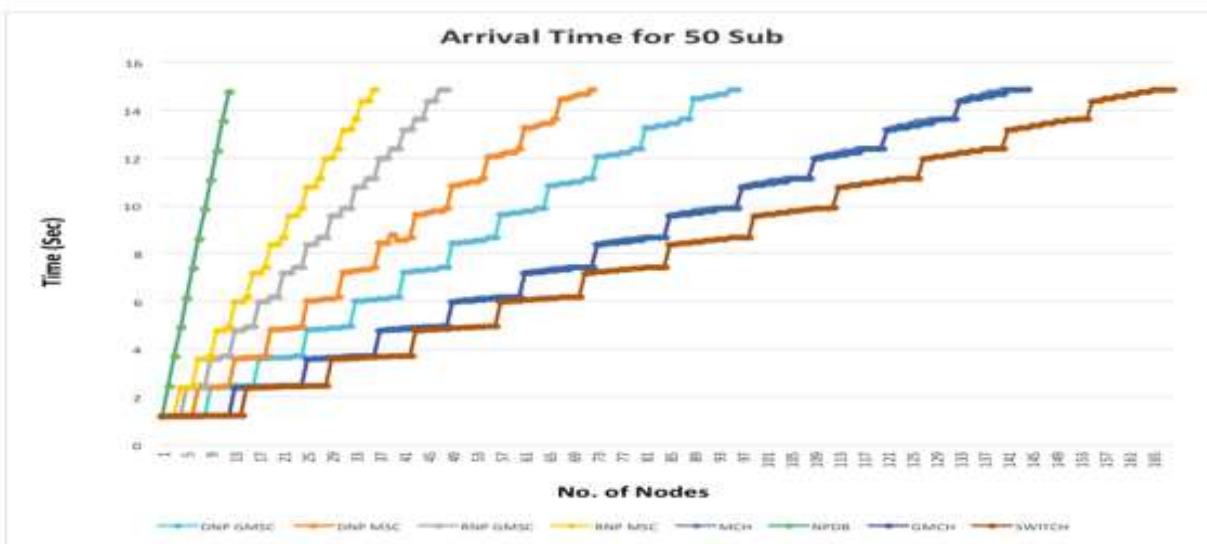


Fig. 7: Summary of graph of arrival time for fifty subscribers.

4.4 Simulation for Hundred Subscribers

The graph in Fig. 8 shows the summary of arrival time for a seed of hundred subscribers. The graph shows a gradual linear shape: an indication that the time taken for the switching modules to process one hundred subscribers correspondingly increased as the number of subscribers seeking porting services increased.

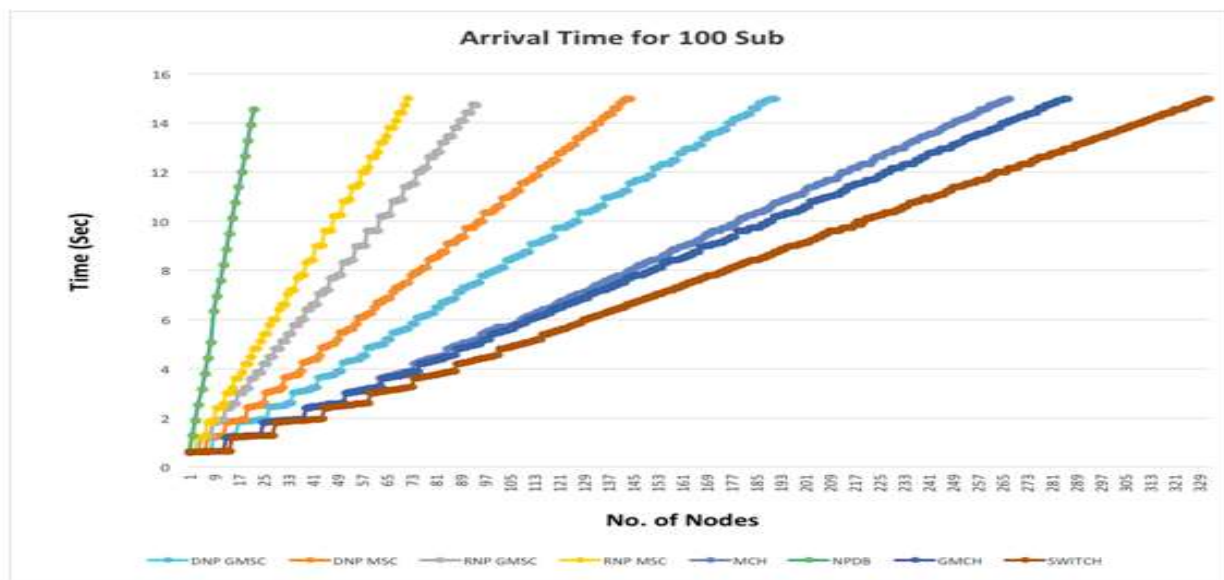


Fig. 8: Graph of arrival time for hundred subscriber (summar)

4.5 Simulation Analysis

The data obtained during the porting process of each seed of subscribers within a 60- second simulation time was very large. In view of this, a different time frame was used. A 15-second simulation window was therefore used and the summary of the analyses are presented graphically. Further to this, simulation parameters showing average arrival time for various seeds are presented in the Tables (Table 3 – Table 7).

Table 3: Processing time for one subscriber

NODE	TIME (SEC)
RNP	0.024
DNP	0.048
MCH	0.084
MCH (NPDB)	0.012

Table 4: Processing time for ten subscribers

NODE	TIME (SEC)
RNP	0.24
DNP	0.48
MCH	0.84
MCH (NPDB)	0.12

Table 5: Processing time for fifty subscribers.

NODE	TIME (SEC)
RNP	1.2
DNP	2.4
MCH	4.2
MCH(NPDB)	0.6

Table 6: Processing time for hundred subscribers.

NODE	TIME (SEC)
RNP	2.4
DNP	4.8
MCH	8.4
NCC (NPDB)	1.2

Figure 9 shows a comparison between the average arrival rates and the average service rate for each seed. Also they show processing rate at the NPDB for each seed. This graphical presentation takes a closer look at the effect of the porting process when a seed of ten, fifty and hundred subscribers were ported within a time frame of 15 seconds. This figure also supports the signaling scheme shown in Figure 5; indicating that increase in the average arrival rate of a network is based on the increase in the number of MNP requests made by subscribers.



Fig. 9: Comparison of the average arrival rate.

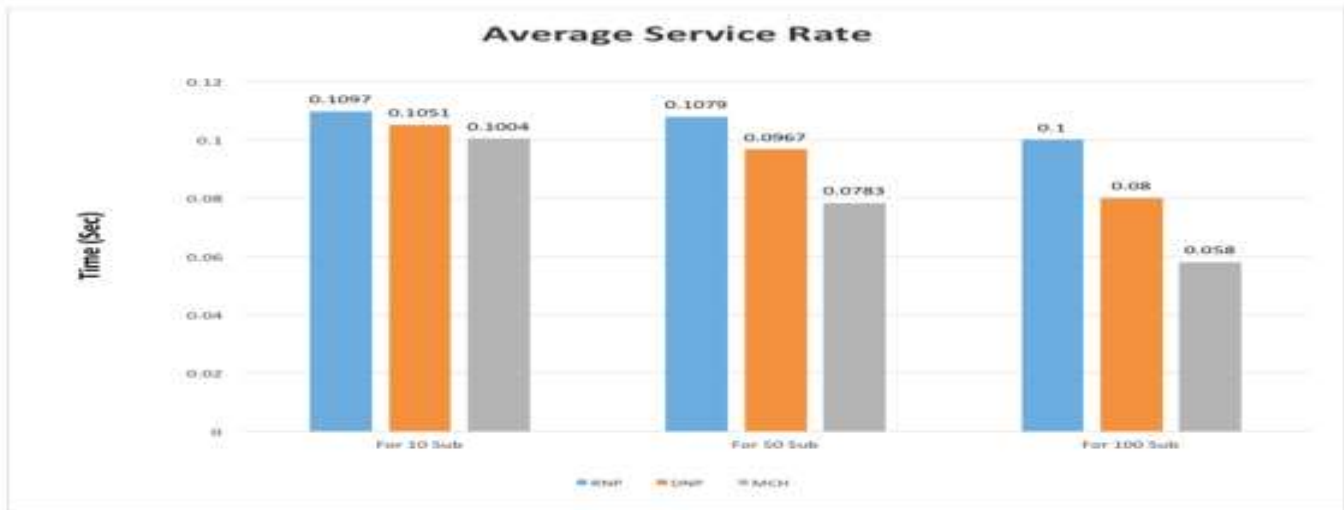


Fig. 10: Comparison of the average service rate.

The service rate is the time allocated by the network to service its subscribers. Figure 10 shows that increase in the number of subscriber per time (that requested for porting service) has a lesser service rate than when there were fewer subscribers. This is an indication that service time allocated can deliberately be reduced in order to reduce pressure on the bandwidth configured for real-time income generating traffic.

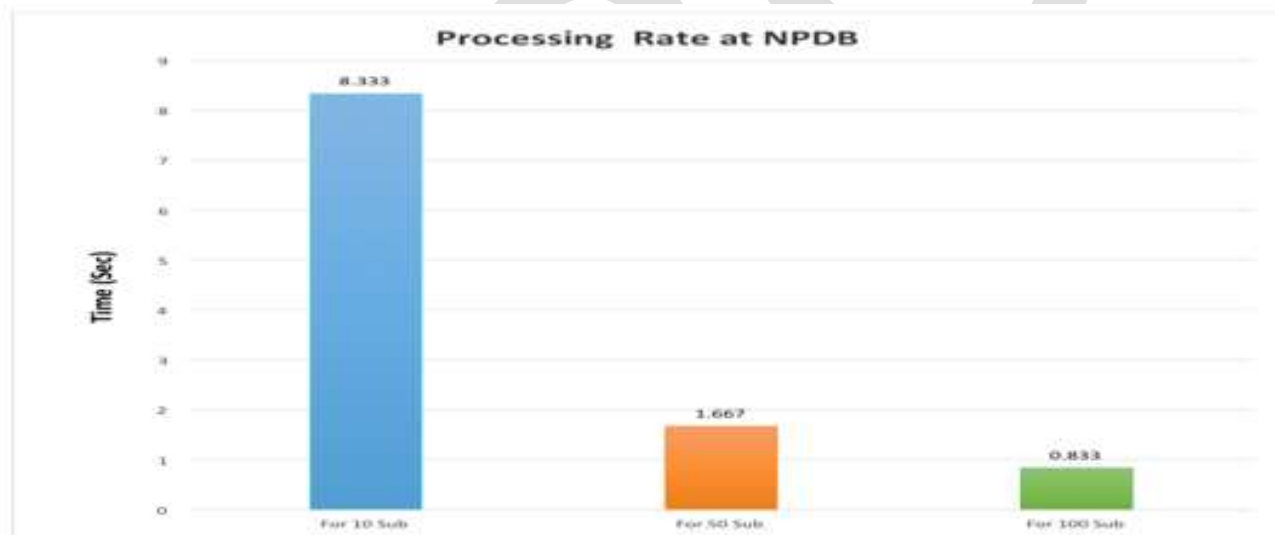


Fig. 11: Comparison of the processing rate at NPDB for different seeds

5. CONCLUSION AND RECOMMENDATIONS

5.1 Conclusion

Number portability allows a subscriber to change service provider, geographical location or service type without changing his phone number. This unique technology has become a mandatory service in many countries in view of its numerous advantages. The aim of the study is to find out the rate at which traditional services (voice, data, and video) carried out by these network providers shall be affected if the rate of port number- requests become very high. This is so because of the assumption that all service arrivals are Poissonian and the service time is exponentially distributed. The performance of the network was therefore measured with respect to the percentage of the numbers ported as against the average arrival rate, service rate and the processing rate. These variables account for the switching capacity of a network.

The simulating model was deployed using Packet Tracer tool-kit. The study noted that initiating an MNP request up to completion, requires the signal passing through many switching nodes, which traditionally are routing nodes for normal services (call, SMS, data, video). Besides, the study also indicated that MNP request set-up is more complex and has a longer duration than the normal services. The study revealed that the ported subscribers in Nigeria are still a far cry of what is expected, considering the high subscriber-base in the country. The study further inferred that since not less than two networks are usually involved in the porting processes and administration, different signaling protocols, bandwidth capacity and technologies can be involved. Traffic interconnects agreement between these different operators, existing load levels and deliberate propagation delays created through software configuration are hindrances to the porting process. The study also noted that since the MNP transactions occupy the same switching ports with the traditional services, MNP services encounter delay traffic terminations.

This is in view of different routing platforms; which may invariably cause deliberate frustrations from operators with limited switching capacity; through extension of the processing time, or reduced time allotted for porting services. Besides, the Donor NP can deliberately create bottle necks in view of the infrastructure involved, losing their subscriber base and depleting their operational income. The study also noted that congestion becomes the order of the day, as termination of traffic simulated during porting transaction becomes very slow as the number of seeds increased.

The essence of this exercise is to monitor real-time traffic under a combination of porting numbers and traditional traffic flow. The exercise indicated congested switching nodes, which is an indication that porting activities will introduce traffic congestion if the operational channels are not expanded to accommodate high traffic that may be generated through porting regime. Furthermore, results obtained after the simulation shows that the NPDB is the least used resource in the porting process and has a processing rate of 833msec^{-1} for 100 subscribers, 1667msec^{-1} for 50 subscribers and 333msec^{-1} for 10 subscribers. The service rate of each network was monitored in a 15sec simulation window. The result also shows that the service rate for 10 subscribers is given as 105.1msec^{-1} for the Recipient NP, and 107.9msec^{-1} for the Donor network; while for 50 subscribers, it is 96.7msec^{-1} for the Recipient NP and 109.7msec^{-1} for the Donor NP. Similarly, for 100 subscribers it is 100msec^{-1} for Recipient NP and 80msec^{-1} for Donor NP. The Recipient NP has average arrival rate of 130msec^{-1} , while the Donor NP is 131msec^{-1} for 100 subscribers. The Recipient NP average arrival rate of 125.9msec^{-1} and the Donor NP is 126.3msec^{-1} for 50 subscribers. Finally, the Recipient NP has average arrival rate of 110.8msec^{-1} and the Donor NP is 110.7msec^{-1} for 10 subscribers. The study collaborates the reasons for the unimpressive performance of the Nigerian Communications Commission on Number Portability programme in Nigeria.

5.2 RECOMMENDATION

This research work was accomplished with minimum details of the switching nodes involved in traffic carriers for Mobile Network Portability. This was due to limited data from network operators and NCC; thereby restricting our sources of knowledge to simulation packages to model a similar traffic scenario. However, further effort should be made to access relevant data from statutory bodies in view of the importance of the study.

REFERENCES:

- [1] Fife, E. & Pereira, F. (2002) *Socio-economic and cultural factors affecting adoption of broadband access: A cross-country analysis*. Retrieved November 18, 2012 from <http://www.marshall.usc.edu/ctm/publications/FITCE2002.pdf>.
- [2] Bassey, D. E., Okon, B. E. & FaithPraise, F. O. (2016). Design and Construction of a GSM-Based Multipurpose Measuring Device for UHF Signal Strength Levels. *International Journal of Science, Engineering and Technology Research*, Vol. 5, Issue 3, pp. 841-846.
- [3] Bassey, D. E., R. C. Okoro., J. C. Ogbulezie. (2016). Design Considerations of Different Segments of UHF Wireless Network in Cross River State, Nigeria. *International Journal of Science, Engineering and Technology Research*, Vol. 5, Issue 3, pp. 835-840.
- [4] Bassey, D. E., Okon, B. E. & Effiom, E. O. (2016). Pilot Case Study of GSM - Network Load Measurement in Ikeja - Nigeria. *International Journal of Science, Engineering and Technology Research*, Vol. 5, Issue 3, pp. 824-829.
- [5] Bassey, D. E., Ogbulezie, J. C. & Okon, B. E. (2016). Modeling a Low Latency IP Network in Nigeria. *International Journal of Science, Engineering and Technology Research*, Vol. 5, Issue 3, pp. 830-834.
- [6] Bassey, D. E., Okoro, R. C., Okon, B. E. (2016). Modeling of Radio Waves Transmission of Building Located around Niger Delta Urban Microcell Environment Using "Ray Tracing Techniques". *International Journal of Science and Research*, Vol.5, Issue 2, pp. 337-346.
- [7] Bassey, D. E., Okoro, R. C., Okon, B. E. (2016). Issues of Variance of Extreme Values in a Heterogenous Teletraffic Environment. *International Journal of Science and Research*, Vol. 5, Issue 2, pp. 164-169.
- [8] Hart, J., Reed, R., & Bar, F. (1992). The building of the internet: Implications for the future of broadband networks. *A journal of Telecommunications Policy*, 16, 666-689.

- [9] Bassey, D. E., Okoro, R. C. & Okon, B. E. (2016). Issues Associated with Decimeter Waves Propagation at 0.6, 1.0 and 2.0 Peak Fresnel Zone Levels. *International Journal of Science and Research*, Vol. 5, Issue 2, pages 159-163.
- [10] Bassey, D. E., Okoro, R. C., Okon, B. E., & Eyime, E. E. (2016). Broadband – Infrastructural Deficit and ICT Growth Potentials in Cross River State, Nigeria. *International Journal of Innovative Research in Computer and Communication Engineering (IJIRCCE)*, Vol. 4, Issue 5, pages 8465-8476.
- [11] Bassey, D. E & Okon, B. E (2015). Comparative Studies between Reduction of Discrete Frequency Ranges and Radiated Sound Levels (A Case Study of 50 kVA Diesel Engine Cooling Fan). *International Journal of Technology and Research (IJTNR)*, Vol. 3, Issue 4, pages 85-92.
- [13] Bassey, D. E., Okon, B. E., Faith-Praise, F. O., & Eyime, E. E. (2016). Characterization of Traffic Flow Consumption Pattern and Subscribers' Behaviour. *International Journal of Innovative Research in Computer and Communication Engineering (IJIRCCE)*, Vol. 4, Issue 5, pages 8484-8493.
- [14] Bassey, D. E., Okon, B. E. & Effiom, E. O. (2016). 'Broadband Network Penetration and Growth Pattern in North Eastern Part of Nigeria'. Retrieved September 5, 2016 from <http://www.ijser.org/onlineResearchPaperViewer.aspx?Broadband-Network-Penetration-and-Growth-Pattern-in-North-Eastern-Part-of-Nigeria.pdf>
- [15] Bassey, D. E., Okon, B. E. & Umunnah, R. (2016). 'The Security Implications of Virtual Local Area Network (VLAN), Niger Mills, Calabar, Nigeria'. Retrieved September 5, 2016 from <http://www.ijser.org/onlineResearchPaperViewer.aspx?The-Security-Implications-of-Virtual-Local-Area-Network--VLAN--Niger-Mills--Calabar--Nigeria.pdf>
- [16] Mason, A. (2011). *Assessment of economic impact of wireless broadband in Nigeria*. Retrieved January 5, 2013 from <http://serving.webgen.gsm.org/5926DA9A-2DD6-48E7-BAD4-50D4CD3AF30A/projects/Spectrum/DigitalDividend/DDtoolkit/uploads/assets/downloads/07/wireless-broadband-in-nigeria.pdf>.
- [17] Bassey, D. E., Ogbulezie, J. C. & R. Umunnah (2016). Empirical Review of Basic Concepts of Teletraffic Postulates. *International Journal of Scientific & Engineering Research*, Volume 7, Issue 3, pages 1171-1186.
- [18] Bassey, D. E., Akpan, Aniefiok. O. & Udoeno, E. (2016). UHF Wave Propagation Losses Beyond 40 Percent Fresnel Zone Radius in South-South Nigeria. *International Journal of Science and Research*, Volume 5, Issue 2, pages 740-745.
- [19] Bassey, D. E., Ogbulezie, J. C. & Effiom, E. O. (2016). Local Area Network (LAN) Mock-up and Prevention of Cybernetics Related Crimes in Nigermills Company Using Firewall Security Device. *International Journal of Scientific & Engineering Research*, Volume 7, Issue 3, pages 1124-1130.
- [20] Okon, B. E & Bassey, D. E. (2016). Discrete Frequency Noise Reduction of 100 kVA Diesel Engine Cooling Fan *International Journal of Engineering Research and General Science*, Volume 4, Issue 4, pages 414-422.
- [21] Ogbulezie, J., Onuu, M., Bassey, D. & Etienam-umoh, S. (2013). Site specific measurements and propagation models for GSM in three cities in Northern Nigeria. *American Journal of Scientific and Industrial Research*, vol. 4, Issue 2, pages 238-245.
- [22] Okon, B. E., & Umunnah, R. A (2015). Identification of Threats to Communication Security, Effects and Ways of Mitigation the Threats. *International Journal of Scientific & Engineering Research (IJSER)*, Vol.6, Issue 5 pages. 1219-1235.
- [23] Atiya, F. K. (2010). Mobile Number Portability: Challenges and Solutions. *Journal Of Emerging Trends In Computing and Information Sciences*.4 (6)2079-8407