



Contents lists available at ScienceDirect

## Asian Pacific Journal of Tropical Biomedicine

journal homepage: www.elsevier.com/locate/apjtb



Document heading doi:10.1016/S2221-1691(12)60226-3 © 2012 by the Asian Pacific Journal of Tropical Biomedicine. All rights reserved.

# The effect of polymorphism in gene of insulin-like growth factor-I on the serum periparturient concentration in Holstein dairy cows

A Mirzaei<sup>1\*</sup>, H Sharifiyazdi<sup>1</sup>, MR Ahmadi<sup>1</sup>, T Ararooti<sup>1</sup>, A Rowshan Ghasrodashti<sup>2</sup>, A Kadivar<sup>3</sup><sup>1</sup> Department of Clinical Science, School of Veterinary Medicine, Shiraz University, Shiraz 71345, Iran<sup>2</sup> Islamic Azad University, Kazerun Branch, Kazerun, Iran<sup>3</sup> Research Institute of Animal Embryo Technology, Shahrekord University, Shahrekord, Iran

## ARTICLE INFO

## Article history:

Received 31 March 2012

Received in revised form 8 April 2012

Accepted 10 May 2012

Available online 28 October 2012

## Keywords:

Polymorphism

Insulin-like growth factor-I (IGF-I)

Serum concentration

Periparturient

Dairy cows

## ABSTRACT

**Objective:** To investigate the relationship between polymorphism within the 5′-untranslated region (5′-UTR) of IGF-I gene and its periparturient concentration in Iranian Holstein dairy cows. **Methods:** Blood samples (5 mL, n = 37) were collected by caudal venipuncture from each animal into sample tubes containing the EDTA and DNA was extracted from blood. In order to measure IGF-I concentration the collection of blood samples (n = 111) was also done at 14 d before calving (prepartum), 25 and 45 d postpartum. **Results:** We found evidence for a significant effect of C to T mutation in position 512 of IGF-I gene on its serum concentration in dairy cows in Iran. Cows with CC genotype had significantly higher concentration (Mean±SD) of IGF-I at 14 d prepartum (91.8±18.1) μg/L compared to those with TT genotype (73.3±14.4) μg/L (P=0.04). A significant trend (quadratic) was found for IGF-I concentration, as higher in CC cows compared to ones with TT genotype, during the 14 d before calving to 45 d postpartum (P=0.01). **Conclusions:** We concluded that C/T transition in the promoter region of IGF-I gene can influence the serum concentration of IGF-I in periparturient dairy cows.

## 1. Introduction

Reproductive events such as follicular development and ovulation are controlled by several hormones and metabolites. The periparturient period is critical for fertility and milk production after calving. Postpartum ovarian activity was impaired following hormonal and metabolic changes especially after calving and eventually the cattle's reproductive performance will be affected[1]. One of the most important metabolic factors affecting the reproductive activity is insulin-like growth factor-I (IGF-I) concentration changes after calving[2,3].

Insulin-like growth factor-I is produced in organs of reproductive significance such as hypothalamus, ovaries, oviducts, and uterus[4]. It can change reproductive activity by affecting on neural pathway which control production of GnRH or effect on the secretion of pituitary gonadotropin; it has also direct effects on the ovary and influences its

susceptibility to FSH and LH[5]. In addition, IGF-I can influence on the proliferation and differentiation of granulosa cell, postpartum follicular growth and consequently first ovulation of the dominant follicle, development of corpus luteum and preimplantation embryo development[6,7]. Correspondingly, a positive relationship has been reported between reproductive performance and the concentration of IGF-I after calving in dairy cows[8,9].

IGF-I gene is located on chromosome 5 in cattle. Although different polymorphisms have been reported in IGF-I gene so far[10,11], the point mutation (C/T transition) at nucleotide position 512 within the 5′-untranslated region (5′-UTR) has attracted the most attention[12]. This type of mutation was first identified by Ge *et al*[13]. Recently, Maj *et al* discovered a significant association between the IGF-I genotypes based on this region and the IGF-I blood level[14]. Heritability of IGF-I is moderate and significant[15]. Postpartum peripheral IGF-I levels are affected by breed/genotype[16]. Different genotypes can alter the endocrine and metabolic profiles of the transition dairy cow under grazing condition[17]. Several studies reported periparturient changes of IGF-I blood concentration in cattle[18,19]. It has been reported significant associations between single nucleotide polymorphisms (SNPs) in IGF-I and production traits in Holstein-Friesian cattle[20–22]. However, the effect of IGF-I genotypes on its

\*Corresponding author: Abdolrah Mirzaei, Department of Clinical Science, School of Veterinary Medicine, Shiraz University, Shiraz 71345, Iran.

Tel: 00987116138909

Fax: 00987112286940

E-mail: mirzaei@shirazu.ac.ir; abdolah607@yahoo.com

Financially supported by grant of the School of Veterinary Medicine, Shiraz University (grant number: 87GRVT47) and partly by National Elite Foundation of Iran (number: 88GRD1M83440).

blood concentration during periparturient period (before and after calving) in dairy cow has not yet been investigated. During postpartum period, concentrations of IGF-I has links with many aspects of reproduction, is altered. With these in mind, the present investigation was undertaken to study the relationship between polymorphism within 512 region of IGF-I gene and its periparturient concentration in Iranian Holstein dairy cows.

## 2. Materials and methods

### 2.1. Animals and sample collection

This study was carried out on registered multiparous Iranian Holstein cows at the farm of Farzis milk and meat producing complex in Shiraz, Fars province, south of Iran. Shiraz is located at latitude of 29°38' and longitude 52°36' E. Its altitude is 1296 m above sea level. The cows were kept under the same weather and management conditions in a similar manner. Cows were fed standard rations (total mixed ration) including mainly alfalfa, corn silage, beet pulp, cotton seed, soybean, corn and barley. Oestrus was detected four times daily by visual detection. Cow was artificially inseminated (AI), about 12 h after heat detection. Pregnancy diagnosis was carried out by ultrasound examination (real time B-mode linear array scanner with a 5 MHz transducer, SIUI, China) 25–35 d after AI. In this study, 37 high producing Holstein dairy cows with the history of acceptable physical conditions in previous lactation were chosen. The cows with 3 to 6 lactation number were selected. Selection criteria for studied cows included acceptable body condition score and general health during the various production stages in previous lactation. Cows had an average daily previous lactations milk yield of (30±2) kg.

Blood samples ( $n = 37$ ; 5 mL) were collected by caudal venipuncture from each animal into sample tubes containing the anticoagulant potassium ethylenediaminetetraacetic acid (EDTA K3E 15%, 0.12 mL; BD Vacutainer, BD Vacutainer systems, Plymouth, UK) and stored at -20 °C for subsequent DNA extraction. In order to measure periparturient serum IGF-I concentration, the collection of blood samples ( $n = 111$ ) was also done at 14 d before calving (prepartum), 25 and 45 d postpartum of studied cows in the Spring (from April to June). Within 4 h after collection, serum was separated by centrifugation (1 700 × g for 15 min) and stored at -22 °C until assayed. Serum IGF-I was measured using ELISA kits (UK immunodiagnostic systems Ltd, IDS). The inter- and intra-assay coefficients of variation were 6.5% and 7.2%, respectively, and the sensitivity was 3.1 ng/mL.

### 2.2. Genomic DNA extraction

Total genomic DNA was extracted from blood using the DNeasy® Blood and Tissue Kit (Qiagen, Valencia, CA, USA) according to the manufacturer's instructions. Briefly, 50 µL of blood added to 170 µL of PBS then digested using 200 µL of a lysis solution (AL buffer, Qiagen) containing guanidine hydrochloride and 20 µL of proteinase K (50 µg/mL) at 56 °C for 10 min. after adding 200 µL Ethanol, the mixture was vortexed for 15 s and then added to a DNA-binding column and spun down for 1 min. The column was then washed

several times using AW1 and AW2 buffers (Qiagen). Finally, the genomic DNAs were eluted in a volume of 100 µL supplied elution buffer. The extracted DNA was diluted to a working concentration of 10–20 ng/µL, and 2.4 µL of it was used as a template in PCR.

### 2.3. IGF-I polymorphism

The amplification of the 5'-flanking region of the IGF-I gene was carried out with primer sequences designed by Ge *et al*[13]. In this method, the IGF-I/SnaBI polymorphism was identified using the Amplification Created Restriction Site (ACRS) methods. The 249-bp fragment of the IGF-I gene was amplified using primers IGF677F: 5'-ATTACAAAGCTGCCCTGCCCC-3', and IGF897R: 5'-ACCTTACCCGTATGAAAGGAATATACGT-3' (The underlined introduce a restriction site near the point mutation).

The following PCR conditions were applied to each assay; 50 mM KCl, 10 mM Tris-HCl (pH = 9.0), 1.5 mM MgCl<sub>2</sub>, 200 µM dNTPs, 10 pmol of each primer, and 1 U Taq DNA polymerase (Fermentas, USA) per 20 µL reaction using 2.4 µL of DNA extracted as template. PCR were carried out using a Bio-Rad thermocycler (Bio-Rad Laboratories Inc., Hercules, USA) with the following conditions: with the initial denaturation at 94 °C for 5 min, followed by 35 cycles, denaturation at 94 °C for 45 s, annealing at 62 °C for 1 min and extension at 72 °C for 30 s. A final extension at 72 °C for 7 min at the end of the amplification cycles was included. Sterile water was used as the negative controls. The PCR products were analyzed by agarose gel 1.5%. The positive reaction products were used for enzymatic digestion by SnaBI (TAC. GTA) restriction endonuclease.

Digestion of the products of RFLP-PCR with the SnaBI nuclease (Fermentas Inc., USA) was carried out in a mixture consisting of 10 µL of the PCR product, 1.5 µL 10× Buffer Tango, 2 µL (30 U) of the enzyme, and 1.5 µL distilled water to a final volume of 15 µL. The reaction was at 37 °C for 5 h followed by 20 min of inactivation at 65 °C. The digested PCR products were analyzed by agarose gel 3% in 1 × Tris-Acetic Acid-EDTA (TAE) buffer. The gels were stained with ethidium bromide (0.5 µg/mL) and visualized under UV light on a transilluminator.

### 2.4. Statistical analysis

The results were analyzed from the aspect of relationship between the polymorphism within the 5'-UTR of IGF-I gene and its concentration. The serum concentration of IGF-I was compared between cows with different IGF-I genotypes by Kruskal Wallis test. Three categories of cow genotypes include TT, TC and CC. With the observed mean, the effects of C/T transition on the periparturient concentration of IGF-I was statistically analyzed with ANOVA for repeated measures using the GLM procedure of SPSS statistical software. The statistical package SPSS for Windows was used (SPSS for Windows, version 15, SPSS Inc, Chicago, Illinois). Probability values of  $P < 0.05$  were considered significant.

## 3. Results

Point mutation and marker genotyping showed that a

transition of T to C was identified at 512 bp 5' to the UTR region. Primer IGF897R introduced a SnaBI restriction site, which cut the fragment amplified from the A allele (using primers IGF677F and IGF897R) into two fragments (223 bp and 26 bp). The 223 bp fragment and the whole fragment (249 bp) can be distinguished by Agarose gel (Figure 1). The smaller 26 bp DNA fragment tends to give diffuse bands through the agarose gel and will not obviously visible.

IGF-I allele frequencies were 0.49 and 0.51 for T and C, respectively. The frequency of cows with TT, CT and CC genotypes were 19%, 59.4% and 21.6%, respectively.

We found evidence for a significant association between C to T mutation in position 512 of IGF-I gene and its serum concentration in dairy cows in Iran. The highest

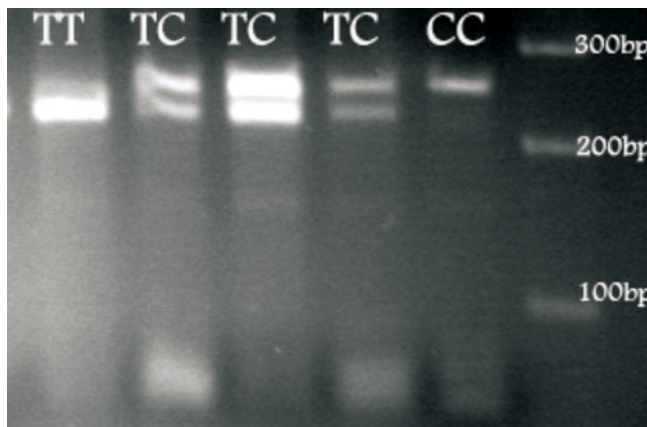
serum concentration of IGF-I in cows was found in CC genotype animals in which the cows with CC genotype had significantly higher concentration (mean±SD) of IGF-I at 14 days prepartum ( $91.8 \pm 18.1$ )  $\mu\text{g/L}$  compared to those with TT genotype ( $73.3 \pm 14.4$ )  $\mu\text{g/L}$  ( $P = 0.04$ ; Table 1). In addition, the mean (±SD) of IGF-I concentration during periparturient periods (14 d before calving to 45 d postpartum) was also higher in cows with CC genotype compared to cows with TT genotype ( $45.4 \pm 5.2$ ) vs. ( $37.3 \pm 5.6$ )  $\mu\text{g/L}$ ;  $P = 0.02$ ; Table 1. The results of the repeated measures ANOVA indicated that the quadratic (order 2) effect of C/T transition on the trend of IGF-I concentration between the CC and TT genotype was significantly different during the 14 d before calving to 45 d postpartum ( $P=0.01$ , Figure 2).

**Table 1**

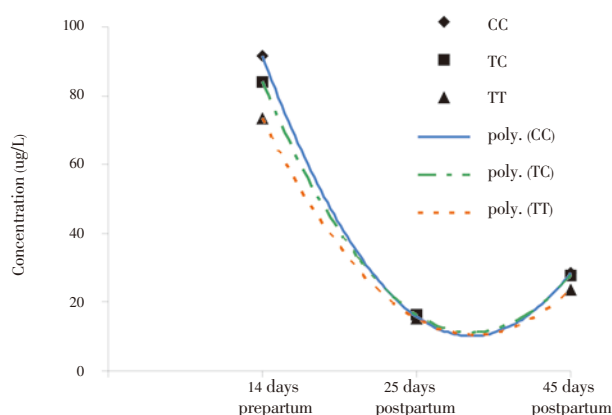
Comparison of the serum concentration of IGF-I ( $\mu\text{g/L}$ ) (mean±SD) between different IGF-I genotypes of dairy cows.

IGF Genotype	Periparturient periods			Mean of samples
	14 days prepartum	25 days postpartum	45 days postpartum	
CC Genotype	$91.8 \pm 18.1^{**}$	$15.8 \pm 2.2$	$28.6 \pm 13.2$	$45.4 \pm 5.2^{**}$
TC Genotype	$84.2 \pm 23.1$	$16.2 \pm 3.6$	$27.7 \pm 11.4$	$42.7 \pm 10.4$
TT Genotype	$73.3 \pm 14.4$	$15.1 \pm 3.3$	$23.5 \pm 10.6$	$37.3 \pm 5.6$

\*\* $P < 0.05$  compared with group of TT genotype.



**Figure 1.** Electrophoresis pattern after digestion of the PCR products obtained from different IGF-I genotypes (TT, TC, CC).



**Figure 2.** Time trend (order 2) of serum concentration of IGF-I ( $\mu\text{g/L}$ ) in different IGF-I genotype groups (CC, TC and TT) of dairy cows during periparturient periods.

#### 4. Discussion

Several nucleotide sequence polymorphisms were identified in the bovine IGF-I gene<sup>[10,11,13]</sup>. Recently, the C/T transition at position 512 of the 5'-UTR in IGF-I gene was shown to be associated with blood IGF-I concentration in the Polish Holsteion-Friesion cattle<sup>[14]</sup>. The highest serum concentration of IGF-I in cows was found in CC genotype animals (1 024 ng/mL) while TT and CT genotypes cows had 698 and 859 ng/mL in the serum, respectively<sup>[14]</sup>. So, Maj *et al* concluded that C/T transition in this region of IGF-I gene can influence the gene expression. In agreement with previous study<sup>[14]</sup>, CC genotypes of Iranian cows had the highest preparturient concentration of IGF-I in the present study. In our study, frequency for the T and C allele were 0.49 and 0.51 in Iranian Holstein cows. Similarly, Mehmannaavaz *et al* and Bonakdar *et al* have reported a lower frequency for T allele (0.438 and 0.463, respectively) in Iranian Holstein cow<sup>[23,24]</sup>.

The synthesis of the insulin like growth factors (IGF-I and IGF-II) in the postpartum uterus indicates a role in uterine involution of dairy cows<sup>[25]</sup>. In vivo, the bovine oviduct and uterus express IGF-II<sup>[26,27]</sup>. Resumption of normal cyclicity is related to circulating IGF-I concentration of the postpartum cow<sup>[2,28]</sup>. A higher IGF-I blood concentration was reported in postpartum dairy cows with normal ovulatory follicles compared to animals with abnormal ovarian activity such as persistent corpus luteum, cystic follicles and inactive ovaries<sup>[29]</sup>. Proliferation and differentiation of granulosa cells are stimulated by IGF-I; it depend on the stage of development of the follicle<sup>[30]</sup>. In cattle, IGF-I stimulates growth of cultured small antral follicles and improves oocyte viability<sup>[31]</sup>. It has been suggested that measuring circulating IGF-I can predict the timing of first and second postpartum ovulations in dairy cows<sup>[32]</sup> and future fertility of pre-pubertal dairy heifers<sup>[33]</sup>. IGF-I is a good candidate molecule for enhancing post culture viability of bovine embryos produced in vitro<sup>[34]</sup>. It is also considered as a genetic marker for improving fertility and milk production in cattle<sup>[11]</sup>. In the present study, we found significant

difference between the cows with CC and TT genotype in the time trend of serum concentration of IGF-I during 14 d before calving to 45 d postpartum periods. So, some of the differences in circulating IGF-I concentration of periparturient cows may be related to the presence of different IGF-I/UTR genotypes in Holstein dairy herd.

Untranslated region (UTR) contains important information that required for the stability of mature mRNA and the regulation of translation value and protein synthesis with a mechanism of Post-transcriptional regulation of gene expression<sup>[35]</sup>. 5'-UTR can also contain binding sites for transacting proteins, which can also modify the efficiency of mRNA translation. GC-rich region within 5'-UTR provided a capacity for mRNA to form stable stem-loop structure proximal to the 5'-cap<sup>[36]</sup>. In addition, the importance of 5'UTR SNP for translational regulation has been demonstrated in several disease in human<sup>[36]</sup>. It seems that de-regulation of translation, via the 5'-UTR sequences in TT and CT genotypes, is responsible for a significant reduction in IGF-I expression and associated to poor reproductive performance in dairy herds. Most of the previous studies conducted on the IGF-I polymorphisms with the growth traits in beef cattle breed<sup>[10,13]</sup> or milk traits<sup>[20,21]</sup>. We demonstrated an association between the CC genotype and higher concentration of IGF-I during the 14 d before calving to 45 d postpartum in Holstein dairy cows; while the cow with TT genotype had the lowest level of IGF-I. Therefore, in the present research, there was a significant effect of IGF-I genotypes on the periparturient concentration of IGF-I. It has been proposed that the differences in transcriptional activity expresses the levels of alleles of the IGF-I gene<sup>[13]</sup>. Bonakdar *et al* found that once blood sample analysis for IGF-I level at 60 d postpartum multiparous Holstein cows showed no significant differences among different genotypes, with a mean of (107±22) ng/mL, at this time<sup>[24]</sup>. Therefore, this discrepancy in the results of different studies may due to the variation in species, breeds, ages, physiological states, nutritional status, dietary intake, and body condition of cows which were used in the mentioned studies.

In victorian dairy systems, plasma concentrations of IGF-I could be gradually altered by genetic selection<sup>[37]</sup>. Low concentrations of IGF-I before and after calving were associated with a failure to conceive in multiparous cows<sup>[38]</sup>. Taylor *et al* reported that the likelihood of conception was increased by the increasing levels of IGF-I concentrations in the week after calving and at first service<sup>[38]</sup>. Cows with higher plasma IGF-I at the first and third week postpartum tended to have a shorter interval to first ovulation after calving<sup>[9]</sup>. Concentration of IGF-I is two-fold greater in blood and follicular fluid of twinner cows<sup>[39]</sup>. Therefore, the regulatory system of ovarian folliculogenesis to enable: the activation and development of more preantral follicles, the maintenance of larger pools of small antral follicles, the recruitment of more follicles within the cohort of developing follicles, and the selection of two or more dominant follicles within a follicular wave<sup>[30]</sup>. Spicer *et al* reported that the linear rise in serum IGF-I during the postpartum period in not always observed in some genotypes<sup>[40]</sup>. Here it is important to highlight that post calving peripheral IGF-I levels are affected by breed/genotype<sup>[16]</sup>. We found evidence for a significant association between C to T mutation in position 512 of IGF-I gene and its serum periparturient

concentration in Holstein dairy cows in Iran. In conclusion, C/T transition within 512 region of IGF-I gene may influence its concentration and consequently, postpartum reproductive performance could be changed in Iranian Holstein dairy cows.

### Conflict of interest statement

We declare that we have no conflict of interest.

### Acknowledgements

We are grateful to Dr. Saeb and Ms. Masoudiyan for their technical assistance. This study was financially supported by grant of the School of Veterinary Medicine, Shiraz University (grant number: 87GRVT47) and partly by National Elite Foundation of Iran (number: 88GRD1M83440).

### References

- [1] Kawashima C, Sakaguchi M, Suzuki T, Sasamoto Y, Takahashi Y, Matsui M, Miyamoto A. Metabolic profiles in ovulatory and anovulatory primiparous dairy cows during the first follicular wave postpartum. *J Reprod Dev* 2007; **53**: 113–120.
- [2] Kadivar A, Ahmadi MR, Gheisari HR, Nazifi S. Assessment of IGF-I as a factor influencing postpartum reproductive performance and ovarian condition in dairy cattle. *Comp Clin Pathol* 2010; In press
- [3] Obese FY, Stirling TE, Stockdale RC, Macmillan KL, Egan AR, Humphrys S. Effect of concentrate supplementation during early lactation on plasma IGF-I concentrations and reproductive performance of dairy cows. *S Afr J Anim Sci* 2011; **41**: 360–67.
- [4] Daftary SS, Gore AC. IGF-I in the brain as a regulator of reproductive neuroendocrine function. *Exp Biol Med* 2005; **230**: 292–306.
- [5] Lucy MC. Regulation of ovarian follicular growth by somatotropin and insulin-like growth factors in cattle. *J Dairy Sci* 2000; **83**: 1635–1647.
- [6] Velazquez MA, Newman M, Christie MF, Cripps PJ, Crowe MA, Smith RF, et al The usefulness of a single measurement of insulin-like growth factor-1 as a predictor of embryo yield and pregnancy rates in a bovine MOET program. *Theriogenology* 2005; **64**: 1977–1994.
- [7] Stefanello JR, Barreta ME, Porciuncula PM, Arruda JN, Oliveira JF, Oliveira MA, et al. Effect of angiotensin II with follicle cells and insulin-like growth factor-I or insulin on bovine oocyte maturation and embryo development. *Theriogenology* 2006; **66**(9): 2068–2076.
- [8] Velazquez MA, Spicer LJ, Wathes DC. The role of endocrine insulin-like growth factor-I (IGF-I) in female bovine reproduction. *Domest Anim Endocrinol* 2008; **35**: 325–342.
- [9] Tamadon A, Kafi M, Saeb M, Mirzaei A, Saeb S. Relationships between insulin-like growth factor-I, milk yield, body condition score, and postpartum luteal activity in high-producing dairy cows. *Trop Anim Health Pro* 2011; **43**: 29–34.
- [10] De la Rosa Reyna XF, Montoya HM, Castrellón VV, Rincón AMS, Bracamonte MP, Vera WA. Polymorphisms in the IGF1 gene and their effect on growth traits in Mexican beef cattle. *Genet Mol Res* 2010; **9**: 875–83.

- [11] Mullen MP, Lynch CO, Waters SM, Howard DJ, O'Boyle P, Kenny DA, et al. Single nucleotide polymorphisms in the growth hormone and insulin-like growth factor-1 genes are associated with milk production, body condition score and fertility traits in dairy cows. *Genet Mol Res* 2011; **10**: 1819-30.
- [12] Siadkowska E, Zwierzchowski L, Oprzadek L, Strzalkowska N, Bagnicka E, Krzyzewski J. Effect of polymorphism in IGF1 gene on production traits in Polish Holstein-Friesian cattle. *Anim Sci Pap Rep* 2006; **24**(3): 225-237.
- [13] Ge W, Davis ME, Hines HC, Irvin KM, Simmen RCM. Association of a genetic marker with blood serum insulin-like growth factor-I concentration and growth traits in Angus cattle. *J Anim Sci* 2001; **79**: 1757-1762.
- [14] Maj A, Snochowski M, Siadkowska E, Rowinska B, Lisowski P, Robaka-Hyzorek D, et al. Polymorphism in gene of growth hormone receptor (GHR) and insulin-like growth factor-1(IGF1) and its association with both the IGF1 expression in liver and its level in blood in Polish Holstein - Friesian cattle. *Neuroendocrinol Lett* 2008; **29**(6): 981-989.
- [15] Hayhurst C, Flint APF, Lovendahl P, Woolliams JA, Royal MD. Prepubertal predictors for fertility in dairy cattle: potential use of metabolic hormones. The Proceedings of the British Society of Animal Science constitute summaries of papers presented at the Society's Annual Conference in Southport 2007; 82.
- [16] Roberts AJ, Klindt J, Jenkins TG. Effects of varying energy intake and sire breed on duration of postpartum anestrus, insulin like growth factor-1, and growth hormone in mature crossbred cows. *J Anim Sci* 2005; **83**: 1705-1714.
- [17] Rupprechter G, Carriquiry M, Ramos JM, Pereira I, Ana M. Metabolic and endocrine profiles and reproductive parameters in dairy cows under grazing conditions: effect of polymorphisms in somatotrophic axis genes. *Acta Vet Scand* 2011; **53**: 35-44.
- [18] Roche JF, Kolver ES, Kay JK. Influence of precalving feed allowance on periparturient metabolic and hormonal responses and milk production in grazing dairy cows. *J Dairy Sci* 2005; **88**: 677-69.
- [19] Wathes DC, Cheng Z, Bourne N, Taylor VJ, Coffey MP, Brotherstone S. Differences between primiparous and multiparous dairy cows in the inter-relationships between metabolic traits, milk yield and body condition score in the periparturient period. *Domest Anim Endocrinol* 2007; **33**: 203-25.
- [20] Mullen MP, Berry DP, Howard DJ, Diskin MG, Lynch CO, Berkowicz EW, et al. Associations between novel single nucleotide polymorphisms in the Bos taurus growth hormone gene and performance traits in Holstein-Friesian dairy cattle. *J Dairy Sci* 2010; **93**: 5959-69.
- [21] Mullen MP, Berry DP, Howard DJ, Diskin MG, Lynch CO, Giblin L, et al. Single nucleotide polymorphisms in the insulin-like growth factor 1 (IGF-1) gene are associated with performance in Holstein-Friesian dairy cattle. *Front Genet* 2011; **2**: 1-9.
- [22] Waters SM, Berry DP, Mullen MP. Polymorphisms in genes of the somatotrophic axis are independently associated with milk production, udder health, survival and animal size in Holstein-Friesian dairy cattle. *J Anim Breed Genet* 2012; **129**: 70-8.
- [23] Mehmannaavaz Y, Amirinia C, Bonyadi M, Torshizi RV. Association of IGF-1 gene polymorphism with milk production traits and paternal genetic trends in Iranian Holstein bulls. *Afr J Microbiol Res* 2010; **4**(1): 110-114.
- [24] Bonakdar E, Rahmani HR, Edriss MA, Tabatabaei BES. IGF-1 gene polymorphism, but not its blood concentration, is associated with milk fat and protein in Holstein dairy cows. *Genet Mol Res* 2010; **9**(3): 1726-1734.
- [25] Llewellyn S, Fitzpatrick R, Kenny DA, Patton J, Wathes DC. Endometrial expression of the insulin-like growth factor system during uterine involution in the postpartum dairy cow. *Domest Anim Endocrinol* 2008; **34**: 391-402.
- [26] Swangchan-Uthai T, Walsh SW, Alexander SLH, Cheng Z, Crowe MA, Evans ACO, et al. Comparison of mRNA for IGFs and their binding proteins in the oviduct during the peri-oestrous period between dairy heifers and lactating cows. *Reproduction* 2011; **142**: 457-65.
- [27] McCarthy SD, Roche JF, Forde N. Temporal changes in endometrial gene expression and protein localization of members of the IGF family in cattle: effects of progesterone and pregnancy. *Physiol Genomics* 2012; **44**: 130-40.
- [28] Wathes DC, Bourne N, Cheng Z, Mann GE, Taylor VJ, Coffey MP. Multiple correlation analysis of metabolic and endocrine profiles with fertility in primiparous and multiparous cows. *J Dairy Sci* 2007; **90**: 1310-25.
- [29] Kawashima C, Fukihara S, Maeda M, Kaneko E, Montoya CA, Matsui M, et al. Relationship between metabolic hormones and ovulation of dominant follicle during the first follicular wave post-partum in high-producing dairy cows. *Reproduction* 2007; **133**: 155-163.
- [30] Silva JRV, Figueiredo JR, Van den Hurk R. Involvement of growth hormone (GH) and insulin-like growth factor (IGF) system in ovarian folliculogenesis. *Theriogenology* 2009; **71**: 1193-1208.
- [31] Walters KA, Binnie JP, Campbell BK, Armstrong DG, Telfer EE. The effects of IGF-1 on bovine follicle development and IGFBP-2 expression are dose and stage dependent. *Reproduction* 2006; **131**: 515-23.
- [32] Francisco CC, Spicer LJ, Payton ME. Predicting cholesterol, progesterone, and days to ovulation using postpartum metabolic and endocrine measures. *J Dairy Sci* 2003; **86**: 2852-63.
- [33] Taylor VJ, Beever DE, Bryant MJ, Wathes DC. First lactation ovarian function in dairy heifers in relation to prepubertal metabolic profiles. *J Endocrinol* 2004; **180**: 63-75.
- [34] Block J. Use of insulin-like growth factor-1 to improve post-transfer survival of bovine embryos produced in vitro. *Theriogenology* 2007; **68S**: S49-S55.
- [35] Kozak M. An analysis of vertebrate mRNA sequences: intimations of translational control. *J Cell Biol* 1991; **115**: 887-903.
- [36] Smith L. Post-transcriptional regulation of gene expression by alternative 5'-untranslated regions in carcinogenesis. *Biochem Soc Trans* 2008; **36**: 708-711.
- [37] Stirling TE, Stockdale CR, Macmillan KL. Heritability of plasma concentrations of IGF1 and its correlation with reproductive performance in Holstein cows in victorian herds. Proc. Proceedings of the 18th Conference Barossa Valley, South Australia. In: Proceeding Association Advancement Animal Breeding Genetic Barossa Valley: South Australia; 2009, p. 648-651.
- [38] Taylor VJ, Cheng Z, Pushpakumara PGA, Beever DE, Wathes DC. Relationships between the plasma concentrations of insulin-like growth factor-I in dairy cows and their fertility and milk yield. *Vet Rec* 2004; **155**: 583-588.
- [39] Echterkamp SE, Roberts AJ, Lunstra DD, Wise T, Spicer LJ. Ovarian follicular development in cattle selected for twin ovulations and births. *J Anim Sci* 2004; **82**: 459-71.
- [40] Spicer LJ, Chase Jr CC, Rutter LM. Relationship between serum insulin-like growth factor-I and genotype during the postpartum interval in beef cows. *J Anim Sci* 2002; **80**: 716-22.