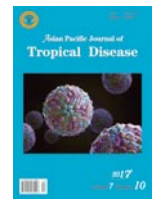


# Asian Pacific Journal of Tropical Disease

journal homepage: <http://www.apjtc.com>



Original article <https://doi.org/10.12980/apjtd.7.2017D7-155>

©2017 by the Asian Pacific Journal of Tropical Disease. All rights reserved.

## The antibiotic resistance and virulence factors of *Escherichia coli* of serogroup O1 isolated from Tehran, Iran

Majid Eslami<sup>1</sup>, Shahin Najjar-Peerayeh<sup>1\*</sup>, Amin Talebi Bezmin Abadi<sup>1</sup>, Bita Bakhshi<sup>1</sup>, Shirin Afhami<sup>2</sup>

<sup>1</sup>Department of Bacteriology, Faculty of Medical Sciences, Tarbiat Modares University, Tehran, Iran

<sup>2</sup>Department of Infectious Diseases and Tropical Medicine, School of Medicine, Tehran University of Medical Sciences, Tehran, Iran

### ARTICLE INFO

#### Article history:

Received 30 Jun 2017

Received in revised form 14 Jul, 2nd revised form 4 Aug 2017

Accepted 25 Aug 2017

Available online 25 Sep 2017

#### Keywords:

*Escherichia coli*  
Phylogroup typing  
O1 serogroup  
Virulence factors

### ABSTRACT

**Objective:** To detect several virulence genes among *Escherichia coli* (*E. coli*) isolates of serogroup O1 collected in Tehran, Iran.

**Methods:** In this study, 100 clinical isolates of *E. coli* were collected in Tehran, Iran. The antibiotic susceptibility test was done for 14 antibiotics according to CLSI guidelines. Phylogenetic grouping was performed by PCR according to the *chuA*, *yjaA* and *TspE4.C2* genes. Serogroup typing was performed using the 12 O-antigens. The virulence genes were detected by PCR.

**Results:** A total of 37 isolates belonged to serogroup O1. All of *E. coli* isolates were sensitive to phosphomycin. Phylogroups A (30%), B1 (21%), B2 (39%), and D (10%) were detected. The prevalence rates of *cnf*, *cdt*, *iutA*, *csaA*, *kpsMII*, *ibeA*, *vat*, *traT*, *TcpC*, *sat*, *hlyA* and *pic* were 19%, 8%, 78%, 84%, 43%, 8%, 16%, 81%, 0%, 38%, 92% and 8%, respectively. Also, the *vat* gene was the most dominant gene in A phylogroup, and the genes of *sat* and *pic* were the most dominant virulence genes in the B2 phylogroup.

**Conclusions:** The phosphomycin, imipenem, and meropenem were the most effective antibiotics. Half of the isolates were multidrug resistant. The predominant virulence factors of *E. coli* isolates were the genes *hlyA*, *iutA*, *traT*, and *csaA*. Detection of virulent strains which exhibit wide antibiotic resistance can help the control programs in order to prevent the spread of infections. According to the results, the B2 phylogroup was the most common phylogroup and strains belonging to B1 phylogroup were the most resistant strains in O1 serogroup *E. coli* strains.

## 1. Introduction

*Escherichia coli* (*E. coli*) strains or pathotypes are genetically diverse groups which cause several types of infections. These strains encode a number of adhesions mediating their persistence and colonization to epithelial cells; thereby, they pass the host immune defense mechanisms and initiate extra-intestinal

infections[1-3]. In addition to fimbrial adhesions, toxins, iron uptaking siderophores, and polysaccharide capsule also participate in the pathogenesis of isolates. Toxin production in parallel with colonization of *E. coli* may induce inflammatory reactions in the urinary tract[4-6]. Alpha-hemolysin (*hlyA*) and cytotoxic necrotizing factor 1 (*cnfI*) are two known toxins which have been demonstrated to cause direct cytotoxicity to the host tissues. Four different toxins from the serine protease autotransporters of Enterobacteriaceae (SPATE) were determined in strains of *E. coli* from pyelonephritis, the *sat* (secretory protein), *pic* (protease leading to colonization), *vat* (vaculating autotransporters toxin) and *Tsh* (the temperature sensitive hemagglutinin), all of which are widely spread in UPEC but not in commensal strains[7-9].

\*Corresponding author: Shahin Najjar Peerayeh, Department of Bacteriology, Faculty of Medical Sciences, Tarbiat Modares University, Tehran, Iran.

Tel: +98 21 82883870

E-mail: najarp\_s@modares.ac.ir

Foundation Project: Supported by Faculty of Medical Science, Tarbiat Modares University, Tehran, Iran (Grant No. 52D/8164, 2017).

The journal implements double-blind peer review practiced by specially invited international editorial board members.

Furthermore, *E. coli* adhesions such as type 1 fimbriae and pili are important for bacterial colonization. The non-fimbrial adhesins are expressed alongside the fimbrial adhesions in the host following stimulatory factors such as environmental and host signals[10].

Drug-resistant strains from Enterobacteriaceae, especially those producing ESBL, are typically treated with carbapenems. The increase of resistance to imipenem among these species will lead to the difficulties in eradication of infection[11-13]. Several carbapenemase genes encode carbapenemase enzymes such as metallo-beta-lactamases such as *bla<sub>IMP</sub>*, *bla<sub>VIM</sub>*, *bla<sub>OXA-48</sub>*, *bla<sub>NDM1</sub>*, *bla<sub>GES</sub>*[14,15]. Several previous studies have detected some of these genes in Iran with various MICs of imipenem. However, the relation of carbapenemases and virulence factors among imipenem-resistant *E. coli* strains has not been fully elucidated. Therefore, this study was performed to detect the frequency of virulence genes and the genes responsible for phylogenetic groups, serogroups and antibiotic resistance among *E. coli* isolates of serogroup O1 from clinical infections.

## 2. Materials and methods

### 2.1. Bacterial isolates

This cross-sectional study was performed in 2017. One hundred *E. coli* clinical isolates were collected from patients within an age range from < 1 to 89 years old. *E. coli* isolates were identified via common biochemical methods and then stored in trypticase soy broth (TSB) containing 30% glycerol for further study.

### 2.2. Antibiotic susceptibility profile in *E. coli* strains

The antibiotic susceptibility of strains was tested according to CLSI guidelines. The antibiotic discs (Mast) used in the present study included 14 antibiotics, namely, phosphomycin (FO, 200 µg), ceftazidime (CAZ, 30 µg), cefotaxime (CTX, 30 µg), co-amoxiclav (AMC, 30 µg), cefazolin (CZ, 30 µg), nitrofurantoin (NI, 300 µg), piperacillin-tazobactam (PTZ, 110 µg), gentamycin (GM, 10 µg), tetracycline (TE, 30 µg), cotrimoxazole (TS, 25 µg), amoxicillin (AMX, 25 µg), imipenem (IMI, 10 µg), meropenem (MEN, 10 µg), and ciprofloxacin (CIP, 5 µg). *E. coli* ATCC 25922 was cultured for the quality assurance of the test.

### 2.3. Virulence typing of *E. coli* strains

Specific primers in the PCR for detection of genes for drug resistance and virulence genes in this study have been shown in Table 1. Virulence genes including capsular polysaccharide synthesis K1 (*kpsMTIII*), cytolethal distending toxin (*cdt*), cytotoxic necrotizing factor 1 (*cnfI*), receptor toll/interleukin 1

(*TcpC*), secretion autoinducer toxin (*sat*), vaculating autoinducer toxin (*vat*), serum survival (*traT*), α-hemolysin (*hlyA*), invasion of brain endothelium (*ibeA*), ferric aerobactin receptor (iron uptake/transport) (*iutA*), curli fimbriae (*csgA*) and serine protease autoinducer (*pic*) were studied by PCR.

**Table 1**

Primers sequences used for amplification of virulence genes.

Genes	Primers	PCR product size (bp)	Reference
<i>cdt</i>	FP: 5'-AAATCACCAAGAATCATCCAGTTA-3' RP: 5'-AAATCTCCTGCAATCATCCAGTTTA-3'	430	[16]
<i>kpsMTIII</i>	FP: 5'-GCGCATTTGCTGATACTGTTG-3' RP: 5'-CATCCAGACGATAAGCATGAGCA-3'	272	[16]
<i>TcpC</i>	FP: 5'-GAGTGGGAAGGAGGTTGAGGC-3' RP: 5'-GCAGTGCCATTTTATCCGCC-3'	544	[17]
<i>iutA</i>	FP: 5'-GGCTGGACATCATGGGAAGTGG-3' RP: 5'-CGTCGGGAACGGGTAGAAATCG-3'	302	[18]
<i>traT</i>	FP: 5'-GGTGTGGTGCGATGAGCACAG-3' RP: 5'-CACGGTTACGCCATCCGTAG-3'	290	[18]
<i>hlyA</i>	FP: 5'-GCATCATCAAGCGTACGTTCC-3' RP: 5'-AATGAGCCAAGCTGGTTAAGCT-3'	534	[19]
<i>cnfI</i>	FP: 5'-AAGATGGAGTTTCTATGCAGGAG-3' RP: 5'-CATTACAGAGTCCGCCCTCATTAT-3'	498	[7]
<i>ibeA</i>	FP: 5'-AGGCAGGTGTGCGCCGCGTAC-3' RP: 5'-TGGTGCTCCGGCAAACCATGC-3'	171	[7]
<i>vat</i>	FP: 5'-AACGGTTGGTGGCAACAATCC-3' RP: 5'-AGCCCTGTAGAATGGCGAGTA-3'	420	[7]
<i>sat</i>	FP: 5'-TCAGAAGCTCAGCGAATCATTG-3' RP: 5'-CCATTATCACCAGTAAAACGCACC-3'	930	[7]
<i>pic</i>	FP: 5'-ACTGGATCTTAAGGCTCAGGAT-3' RP: 5'-GACTTAATGTCACTGTTCCAGCG-3'	572	[7]
<i>csgA</i>	FP: 5'-GGCGGAAATGGTTTCAGATGTTG-3' RP: 5'-CGTATTCATAAGCTTCTCCCGA-3'	295	[20]

### 2.4. Phylogenetic typing of strains by PCR method

Genomic DNA was prepared by boiling method and used as templates for PCR. Phylogenetic grouping for each of the strains was performed by PCR according to the *chuA* and *yjaA* genes and the DNA fragment *TspE4.C2*. The primer pairs used were *chuA* F-(5'-GACGAACCAACGGTCAGGAT-3'), R-(5'-TGCCGCCAGTACCA AAGACA-3'), *yjaA* F-(5'-TGAAGGTCAGGAGA CGCT G-3'), R-(5'-ATGGAGAATGCGTTCCTCAAC-3') and *TspE4C2* F-(5'-GAGTAATGTCGGGGCATTCA-3'), R-(5'-CGCGCCAACAAAGTATTACG-3'). The PCR was performed with Bio-Rad thermal cycler T100 under the following conditions: denaturation for 4 min at 94 °C; 33 cycles of 45 s at 94 °C, 45 s at 55 °C, and 45 s at 72 °C; and a final extension for 10 min at 72 °C.

### 2.5. Amplification of *E. coli* strains of O-serogroup

The most common serogroups of the extraintestinal *E. coli* include antigens O1, O2, O4, O6, O7, O12, O15, O16, O18, O25, O75 and O157 which were analyzed using PCR. Primers used in this study are listed in Table 2. PCR was performed with a Bio-Rad thermal cycler T100 under the following conditions: denaturation for 5 min at 94 °C; 30 cycles of 1 min at 94 °C, 1 min at 61 °C, and 50 s at 72 °C; and a final extension for 10 min at 72 °C.

**Table 2**

Primers for detection of O-serogroups.

Primers	Sequences (5'-3')	PCR product size (bp)
gndbis.F	5'-ATACCGACGACGCCGATCTG-3'	-
rfbO1.R	5'-CCAGAAATACACTTGGAGAC-3'	189
rfbO2.R	5'-GTGACTATTTGTTACAAGC-3'	274
rfbO4.R	5'-AGGGGCCATTTGACCCACTC-3'	193
rfbO6.R	5'-AAATGAGCGCCACCATTAC-3'	584
rfbO7.R	5'-CGAAGATCATCCACGATCCG-3'	722
rfbO12.R	5'-GTGTCAAATGCCTGTCACCG-3'	239
rfbO15.R	5'-TGATAATGACCAACTCGACG-3'	536
rfbO16.R	5'-GGATCATTATGCTGGTACG-3'	450
rfbO18.R	5'-GAAGATGGCTATAATGGTTG-3'	360
rfbO25.R	5'-GAGATCCAAAAACAGTTTGTG-3'	313
rfbO75.R	5'-GTAATAATGCTTGCGAAACC-3'	419
rfbO157.R	5'-TACGACAGAGTGTCTGAG-3'	672

## 2.6. Data analysis

The data of the study were analyzed by SPSS version 21, and the *Chi*-square test and *t*-test where any result with *P* value < 0.05 was considered as significant and 95% confidence interval was assigned.

## 2.7. Ethical approval

This study was approved by Ethical Committee of Faculty of Medical Science, Tarbiat Modares University, Tehran, Iran.

## 3. Results

### 3.1. O serogroup typing in E. coli strains

Of the 100 isolates of *E. coli*, 37% of isolates belonged to O1 serogroup, which was the most prevalent serogroup in our specimens.

### 3.2. Drug resistance pattern in O1 serogroup

The antibiotic resistance pattern of 37 isolates of *E. coli* is as follow: phosphomycin (0%), ceftazidime (57%), cefotaxime (60%), co-amoxiclav (84%), cefazolin (87%), nitrofurantoin (11%), piperacillin-tazobactam (8%), gentamycin (73%), tetracycline (100%), cotrimoxazole (78%), amoxicillin (100%), imipenem (3%), meropenem (3%), and ciprofloxacin (70%).

### 3.3. Phylogenetic typing of E. coli strains

Of the 37 strains belonging to O1 serogroup, 30% belonged to the A phylogroup. These strains belonged to this phylogroup

containing the virulence genes of *csgA*, *hlyA* and *traT*. Interestingly, *kpsMIII* and *pic* virulence genes were not detected in these strains.

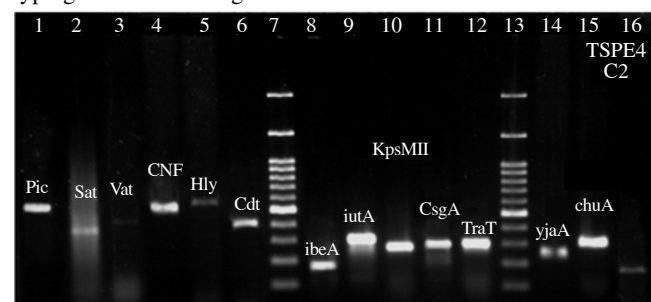
Twenty-one percent of the strains belonged to the B1 phylogroup, which included 56.7% of the strains belonging to O1 serogroup containing the virulence genes *iutA*, *kpsMIII*, *csgA*, *traT*, and *hlyA*, but the virulence genes of *sat*, *vat* and *pic* were not detected in these strains.

The B2 phylogroup had the highest prevalence in serogroup O1 (39%). All of these strains contained the *iutA* gene, while the virulence genes of *ibeA* and *vat* were not detected in these strains.

Only 10% of the strains were identified as D phylogroup, all of which contained virulence genes of *iutA*, *csgA*, and *hlyA*. According to the results, the B2 phylogroup was the most common phylogroup and strains belonging to B1 phylogroup were the most resistant *E. coli* strains of O1 serogroup. The antibiotic resistance of O1 serogroup *E. coli* strains belonging to four phylogroups is shown in Table 3.

### 3.4. PCR detection of E. coli virulence genes

Twelve virulence genes were evaluated in strains. The prevalence rates of *cnf*, *cdt*, *iutA*, *csgA*, *kpsMIII*, *ibeA*, *vat*, *traT*, *TcpC*, *sat*, *hlyA* and *pic* were 19%, 8%, 78%, 84%, 43%, 8%, 16%, 81%, 0%, 38%, 92% and 8%, respectively. Nearly 17% of the strains contained the *vat* gene. All of these strains contained *csgA*, *traT*, *iutA* and *hlyA* virulence genes and belonged to the A and D phylogroups. In addition, 38% of the isolates contained *sat* gene that belonged to A and B2 phylogroups. All of these strains had the *hlyA* and *csgA* virulence genes. Three strains also had the *pic* virulence gene; all of these strains belonged to the B2 phylogroup, which also had the *csgA*, *traT* and *hlyA* virulence genes. The results of PCR for virulence genes and phylogenetic typing are shown in Figure 1.



**Figure 1.** PCR for virulence typing and phylogenetic typing of *E. coli* strains.

Lane 1: 572 bp; Lane 2: 330 bp; Lane 3: 420 bp; Lane 4: 498 bp; Lane 5: 534 bp; Lane 6: 430 bp; Lanes 7 and 13: Ladder 100 bp; Lane 8: 171 bp; Lane 9: 302 bp; Lane 10: 272 bp; Lane 11: 295 bp; Lane 12: 290 bp; Lane 14: 211 bp; Lane 15: 279 bp; Lane 16: 152 bp.

**Table 3**The antibiotic resistance of O1 serogroup *E. coli* strains belonging to four phylogroups (%).

Phylogroups	TE	TS	IMI	MEN	GM	CIP	FM	PTZ	AMC	CTX	CAZ	CZ	AMX	FO
Phylogroup A (N = 11)	100	73	9	9	64	55	18	9	82	46	54	91	100	0
Phylogroup B1 (N = 8)	100	88	0	0	88	88	0	0	88	75	75	100	100	0
Phylogroup B2 (N = 14)	100	86	0	0	79	79	14	7	86	65	50	72	100	0
Phylogroup D (N = 4)	100	75	0	0	50	50	0	25	75	50	50	100	100	0

#### 4. Discussion

*E. coli* strains are the most common causes of intestinal, extraintestinal and urinary tract infections by encoding several virulence factors which mediate the adhesion, toxicity, and entry of strains into the blood[21-25]. Antibiotic resistance has been increased during recent years in Gram-negative bacteria, especially *E. coli* which is predominant species of Enterobacteriaceae in the hospital and even community-associated infections.

The results showed that all of the isolates were resistant to amoxicillin and tetracycline, and over 70% resistant to cotrimoxazole, cefazolin, co-amoxiclav, gentamicin, and ciprofloxacin, while no resistance was observed to phosphomycin. Resistance to imipenem, meropenem, and piperacillin-tazobactam was also very low (below 8%).

Altogether, *hlyA*, *csaA*, *iutA* and *traT* genes were mostly detected, but the frequency of *pic* and *vat* genes was low. The predominant secretory enzyme produced by *E. coli* isolates is a lipoprotein known as *hlyA* which is associated with the development of urinary tract infections, such as pyelonephritis[26]. Interestingly, 92% of isolates in this study were *hlyA* positive, suggesting a relation between sepsis and urinary tract infections. Despite this study, in Mexico, the prevalence of *hlyA* was low (7.4%) and was much lower than that in this present study[27].

The prevalence of *iutA* and *traT* was high in *E. coli* isolates in China (75.8% for *traT*)[28] and India (68% for *iutA*)[29], which is similar to this study, but 23% of isolates from India were *hlyA* and *cnfI* positive. The high rate of drug resistance and the presence of virulence factors in *E. coli* isolates increase the danger of fatal infections with no response to therapy. We detected *cdt* toxin gene in 8% of isolates. Similarly, in Mexico, 2 out of 20 stool samples were *cdt* positive, which was caused by *E. coli*[30].

The *vat* toxin was detected in 51% of septicemia and 12% of fecal samples in India[7], which was higher than our results, but the prevalence of the *pic* gene was 9% which is lower than the result of this study. Another study in Germany demonstrated that 10 (35.7%), 8 (28.6%) and 7 (25%) UPEC strains were positive for the *vat*, *hlyA*, and *cnfI* genes, respectively[31]. In another study in Zabul, Iran, the prevalence of *vat* toxin was 18% in *E. coli* isolates[32]. There is the difference in prevalence of virulence factors mainly due to differences in epidemiology, clinical samples, ages, clonal groups and various strains of *E. coli*.

All of *E. coli* isolates were sensitive to phosphomycin. Half of the isolates were multidrug resistant. The predominant virulence factors of *E. coli* isolates were the *hlyA*, *iutA*, *traT*, and *csaA* genes. O1 serogroup was the most common serogroup in *E. coli* in Iranian strains and B2 phylogroup was the most prevalent phylogroup. In terms of antibiotic resistance, the strains belonging to B1

phylogroup from O1 serogroup were the most resistant strains of *E. coli* from blood samples.

#### Conflict of interest statement

We declare that we have no conflict of interest.

#### Acknowledgment

This study was supported by Faculty of Medical Science, Tarbiat Modares University, Tehran, Iran (Grant No. 52D/8164, 2017).

#### References

- [1] Croxen MA, Law RJ, Scholz R, Keeney KM, Wlodarska M, Finlay BB. Recent advances in understanding enteric pathogenic *Escherichia coli*. *Clin Microbiol Rev* 2013; **26**(4): 822-80.
- [2] Navidinia M, Peerayeh SN, Fallah F, Bakhshi B, Sajadinia RS. Phylogenetic grouping and pathotypic comparison of urine and fecal *Escherichia coli* isolates from children with urinary tract infection. *Braz J Microbiol* 2014; **45**(2): 509-14.
- [3] Tourret J, Willing BP, Croxen MA, Dufour N, Dion S, Wachtel S, et al. Small intestine early innate immunity response during intestinal colonization by *Escherichia coli* depends on its extra-intestinal virulence status. *PLoS One* 2016; **11**(4): e0153034.
- [4] Boll EJ, Struve C, Boisen N, Olesen B, Stahlhut SG, Krogfelt KA. Role of enteroaggregative *Escherichia coli* virulence factors in uropathogenesis. *Infect Immun* 2013; **81**(4): 1164-71.
- [5] Dormanesh B, Safarpour Dehkordi F, Hosseini S, Momtaz H, Mirnejad R, Hoseini MJ, et al. Virulence factors and o-serogroups profiles of uropathogenic *Escherichia coli* isolated from Iranian pediatric patients. *Iran Red Crescent Med J* 2014; **16**(2): e14627.
- [6] Adwan G, Adwan K, Bourinee H. Molecular characterization of some new *E. coli* strains theoretically responsible for both intestinal and extraintestinal infections. *Health Sci* 2016; **5**(6): 158-63.
- [7] Tapader R, Chatterjee S, Singh AK, Dayma P, Haldar S, Pal A, et al. The high prevalence of serine protease autotransporters of Enterobacteriaceae (SPATEs) in *Escherichia coli* causing neonatal septicemia. *Eur J Clin Microbiol Infect Dis* 2014; **33**(11): 2015-24.
- [8] Bhullar K, Zarepour M, Yu H, Yang H, Croxen M, Stahl M, et al. The serine protease autotransporter Pic modulates *Citrobacter rodentium* pathogenesis and its innate recognition by the host. *Infect Immun* 2015; **83**(7): 2636-50.
- [9] Navidinia M, Peerayeh SN, Fallah F, Bakhshi B. Phylogenetic groups and pathogenicity island markers in *Escherichia coli* isolated from children. *Jundishapur J Microbiol* 2013; **6**(10): e8362.
- [10] Saldaña Z, Miguel A, Carrillo-Casas EM, Durán L, Zhang Y, Hernández-Castro R, et al. Production of the *Escherichia coli* common

- pilus by uropathogenic *E. coli* is associated with adherence to HeLa and HTB-4 cells and invasion of mouse bladder urothelium. *PLoS One* 2014; **9**(7): e101200.
- [11] Ahn JY, Song JE, Kim MH, Choi H, Kim JK, Ann HW, et al. Risk factors for the acquisition of carbapenem-resistant *Escherichia coli* at a tertiary care center in South Korea: a matched case-control study. *Am J Infect Control* 2014; **42**(6): 621-5.
- [12] Peerayeh SN, Eslami M, Memariani M, Siadat SD. High prevalence of bla<sub>CTX-M-1</sub> group extended-spectrum  $\beta$ -lactamase genes in *Escherichia coli* isolates from Tehran. *Jundishapur J Microbiol* 2013; **6**(7): e6863.
- [13] Peerayeh SN, Rostami E, Eslami M, Rezaee MA. High frequency of extended-spectrum  $\beta$ -lactamase-producing *Klebsiella pneumoniae* and *Escherichia coli* isolates from male patients' urine. *Arch Clin Infect Dis* 2016; **11**(2): e32696.
- [14] Armand-Lefèvre L, Angebault C, Barbier F, Hamelet E, Defrance G, Ruppé E, et al. Emergence of imipenem-resistant Gram-negative bacilli in intestinal flora of intensive care patients. *Antimicrob Agents Chemother* 2013; **57**(3): 1488-95.
- [15] Xie J, Peters BM, Li B, Li L, Yu G, Xu Z, et al. Clinical features and antimicrobial resistance profiles of important Enterobacteriaceae pathogens in Guangzhou representative of Southern China, 2001–2015. *Microb Pathog* 2017; **107**: 206-11.
- [16] Johnson JR, Stell AL. Extended virulence genotypes of *Escherichia coli* strains from patients with urosepsis in relation to phylogeny and host compromise. *J Infect Dis* 2000; **181**(1): 261-72.
- [17] Nagarjuna D, Dhanda RS, Gaind R, Yadav M. *tcpC* as a prospective new virulence marker in blood *Escherichia coli* isolates from sepsis patients admitted to the intensive care unit. *New Microbes New Infect* 2015; **7**: 28-30.
- [18] Johnson TJ, Wannemuehler Y, Doetkott C, Johnson SJ, Rosenberger SC, Nolan LK. Identification of minimal predictors of avian pathogenic *Escherichia coli* virulence for use as a rapid diagnostic tool. *J Clin Microbiol* 2008; **46**(12): 3987-96.
- [19] Wani SA, Samanta I, Munshi ZH, Bhat MA, Nishikawa Y. Shiga toxin-producing *Escherichia coli* and enteropathogenic *Escherichia coli* in healthy goats in India: occurrence and virulence properties. *J Appl Microbiol* 2006; **100**(1): 108-13.
- [20] Domingos MO, Melo KC, Neves IV, Mota CM, Ruiz RC, Melo BS, et al. Potential for colonization of O111:H25 atypical enteropathogenic *E. coli*. *J Microbiol* 2016; **54**(11): 745-52.
- [21] Witcomb LA, Collins JW, McCarthy AJ, Frankel G, Taylor PW. Bioluminescent imaging reveals novel patterns of colonization and invasion in systemic *Escherichia coli* K1 experimental infection in the neonatal rat. *Infect Immun* 2015; **83**(12): 4528-40.
- [22] Carl MA, Ndao IM, Springman AC, Manning SD, Johnson JR, Johnston BD, et al. Sepsis from the gut: the enteric habitat of bacteria that cause late-onset neonatal bloodstream infections. *Clin Infect Dis* 2014; **58**(9): 1211-8.
- [23] Alerasol M, Gargari SLM, Nazarian S, Bagheri S. Immunogenicity of a fusion protein comprising coli surface antigen 3 and labile B subunit of enterotoxigenic *Escherichia coli*. *Iran Biomed J* 2014; **18**(4): 212.
- [24] Fattahi S, Kafil HS, Nahai MR, Asgharzadeh M, Nori R, Aghazadeh M. Relationship of biofilm formation and different virulence genes in uropathogenic *Escherichia coli* isolates from Northwest Iran. *GMS Hyg Infect Control* 2015; **10**: Doc11.
- [25] Nojoomi F, Ghasemian A, Eslami M, Khodaparast S. Antibiotic susceptibility profile, ESBL production and bla<sub>CTX-M1</sub>, bla<sub>SHV</sub> and bla<sub>TEM</sub> types among *Escherichia coli* blood isolates. *Int J Enteric Pathog* 2017; **5**(1): 9-12.
- [26] Tabasi M, Karam MRA, Habibi M, Mostafavi E, Bouzari S. Genotypic characterization of virulence factors in *Escherichia coli* isolated from patients with acute cystitis, pyelonephritis and asymptomatic bacteriuria. *J Clin Diagn Res* 2016; **10**(12): DC01-7.
- [27] López-Banda DA, Carrillo-Casas EM, Leyva-Leyva M, Orozco-Hoyuela G, Manjarrez-Hernández ÁH, Arroyo-Escalante S, et al. Identification of virulence factors genes in *Escherichia coli* isolates from women with urinary tract infection in Mexico. *Biomed Res Int* 2014; **2014**: 959206.
- [28] Zhao R, Shi J, Shen Y, Li Y, Han Q, Zhang X, et al. Phylogenetic distribution of virulence genes among ESBL-producing uropathogenic *Escherichia coli* isolated from long-term hospitalized patients. *J Clin Diagn Res* 2015; **9**(7): DC01-4.
- [29] Chakraborty A, Adhikari P, Shenoy S, Rao S, Dhanashree B, Saralaya V. Molecular characterization and clinical significance of extraintestinal pathogenic *Escherichia coli* recovered from a south Indian tertiary care hospital. *Microb Pathog* 2016; **95**: 43-8.
- [30] Meza-Segura M, Zaidi MB, Maldonado-Puga S, Huerta-Cantillo J, Chavez-Dueñas L, Navarro-García F, et al. Cytotoxic distending toxin-producing *Escherichia coli* strains causing severe diarrhoea in young Mexican children. *JMM Case Rep* 2017; **4**(2): e005079.
- [31] Toval F, Köhler CD, Vogel U, Wagenlehner F, Mellmann A, Fruth A, et al. Characterization of *Escherichia coli* isolates from hospital inpatients or outpatients with urinary tract infection. *J Clin Microbiol* 2014; **52**(2): 407-18.
- [32] Shookohi M, Rashki A. Prevalence of toxigenic genes in *Escherichia coli* isolates from hospitalized patients in Zabol, Iran. *Int J Enteric Pathog* 2016; **4**(1): e29222.