

## CADAVERIC STUDY ON ANTERIOR AND POSTERIOR PAPILLARY MUSCLES OF TRICUSPID VALVE

Harsha B. R <sup>\*1</sup>, Chandrashekar K.T <sup>2</sup>.

<sup>\*1</sup> Assistant professor, Department of Anatomy, CIMS, Chamrajanagar, Karnataka, India.

<sup>2</sup> Assistant professor, Department of Anatomy, MMC&RI, Mysore, Karnataka, India.

### ABSTRACT

**Background:** Aim of the present study was to observe the morphology, measurements and types of papillary muscles present in tricuspid valve of human heart. Morphology, measurements and attachments of papillary muscles in tricuspid valve gains utmost importance in cardiac surgeries and causes of myocardial infarction in recent times because advent in modern technologies in treatment of tricuspid valve diseases.

**Materials and Methods:** This study was carried out on 96 normal fresh formalin fixed human post-mortem heart specimens. Hearts are not grouped into any criteria of sex and age. Dissection was performed according to standard techniques. Types of papillary muscles observed and length, width and thickness of each muscle are measured and documented.

**Results:** In the present study, number of papillary muscles was present with a frequency of 2-10. Maximum numbers of papillary muscles were 10 seen in only one heart (1%) and minimum numbers of papillary muscles were 2 seen in 3 hearts (3.1%). Anterior papillary muscles were present in all 96 (100%) hearts. Maximum numbers of muscles observed were 3 seen in 6 hearts (6.3%) and minimum number muscle was 1 seen in 66 (68.8%) hearts, which was normal. Two papillary muscles were seen in remaining 24 hearts (25%). Posterior papillary muscles were present in 95 (98.95%) hearts. Seven papillary muscles were observed in only 1 (1%) heart and only 1 papillary muscle was seen in 27 (28.1%) hearts. In measurements of papillary muscles, anterior papillary muscle mean height was  $1.49 \pm 0.44$  cm; mean width was  $0.82 \pm 0.21$  cm and mean thickness was  $0.64 \pm 0.15$  cm respectively and posterior papillary muscle mean height was  $1.05 \pm 0.37$  cm, mean width was  $0.63 \pm 0.17$  cm and mean thickness was  $0.5 \pm 0.11$  cm respectively.

**Conclusion:** We hope this study will serve to understand the tricuspid valve complex and morphometry of different papillary muscles better and it will help in various surgical procedures and cardiac treatment done on tricuspid valve.

**KEYWORDS:** Tricuspid valve, Papillary muscle, Morphometry.

**Address for Correspondence:** Dr. Harsha. B.R, Assistant Professor, Department of Anatomy, CIMS, Chamrajanagar, Karnataka-5771313, India. Contact No: +919591180473

**E-Mail:** [harsha.charlie@gmail.com](mailto:harsha.charlie@gmail.com)

### Access this Article online

#### Quick Response code



DOI: 10.16965/ijar.2015.103

**Web site:** International Journal of Anatomy and Research  
ISSN 2321-4287  
[www.ijmhr.org/ijar.htm](http://www.ijmhr.org/ijar.htm)

Received: 08 Jan 2015      Accepted: 04 Feb 2015  
Peer Review: 08 Jan 2015      Published (O): 28 Feb 2015  
Revised: None                      Published (P): 31 Mar 2015

### INTRODUCTION

The opening of a new field of surgical endeavour often arouses interest in the detailed study of the anatomy of the involved part of the body. As a result of such studies, current notions may be changed and extended so as to understand

better. The impetus given to tricuspid valve surgery in the course of the last few years has prompted revision of our knowledge concerning the anatomy of the normal. In present study the morphometry of papillary muscles in tricuspid valve were studied and then compared with the

works of many eminent scientists in this field. The atrioventricular valvular complex in both right and left ventricles consists of the orifice and its annulus, the cusps, the supporting chordae tendinae of various types and the papillary muscles. Tricuspid valve is made up of six major components. i.e. 1. Right atrial wall, 2. Annulus, 3. Three leaflets, 4. Chordae tendinae, 5. Papillary muscles and 6. Right ventricular free wall.

Harmonious interplay of all these, together with the atrial and ventricular myocardial masses depends on the conducting tissues and the mechanical cohesion provided by the fibro elastic cardiac skeleton.

All parts change substantially in position, shape, angulation and dimensions during a single cardiac cycle. The papillary muscles were small muscle groups which were present in ventricular wall and attached to cusps of valve by chordae tendinae. They contract to prevent invert or prolapse of valve. There are 2 major and 1 minor papillary muscle in the right ventricle. The major papillary muscles are located in the anterior and posterior positions. The minor papillary muscles have a medial position along with several smaller and variable muscles attached to the ventricular septum.

**Anterior papillary muscle:** It is the largest muscle arising from the right anterolateral ventricular wall below the antero-inferior commissure of the inferior leaflet and it also blends with the right end of the septomarginal trabeculae.

**Posterior papillary muscle:** The posterior or inferior muscle arises from the myocardium below the inferoseptal commissure. It is frequently bifid or trifid. It is irregular in size and position.

**Septal or medial papillary muscle:** Is small, but typical and arises from the posterior septal limb of the septomarginal trabeculae. It is often formed of several muscles of which one may be longer and more constant.

All the papillary muscles supply the chordae to adjacent components of the leaflets they support. The septomarginal trabeculae (moderator band) is more or less isolated trabeculae of the bridge type, which extends

from the interventricular septum to the base of the anterior papillary muscle in the lower part of the ventricle. It contains conducting myofibers from the right limb of the atrioventricular bundle [1].

## **MATERIALS AND METHODS**

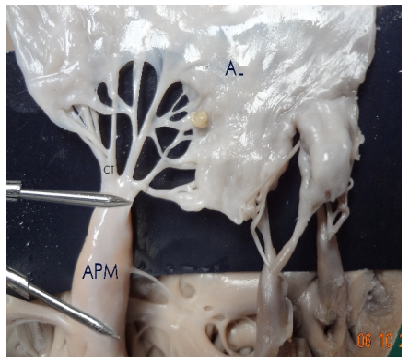
The study was carried out on 96 formalin fixed human hearts from patients who had died of non-vascular causes and were autopsied. No gross abnormality of the tricuspid valves was noted. Study was done without any grouping of specimens on the basis of sex and age. Dissection was performed according to standard autopsy techniques. The Tricuspid valve was opened by a scalpel knife cut passing from the right atrium to the apex of the right ventricle through the lateral or acute margin of the ventricle. The interior of the heart was washed and all the blood clots were removed. The second cut was made along the anterior surface of the heart just left to the intra-ventricular groove from apex of the ventricle to annulus; care was taken not to damage the papillary muscles. Each muscle were measured by using Vernier callipers and documented.

The data were summarised using descriptive statistics like frequency (number of papillary muscles), mean, standard deviation, range and 95% confidence interval (measurement of papillary muscles). All the statistical calculations were performed using software SPSS for windows {Statistical Package for Social Service (SPSS) Inc, 2004, New York} version 13.0.

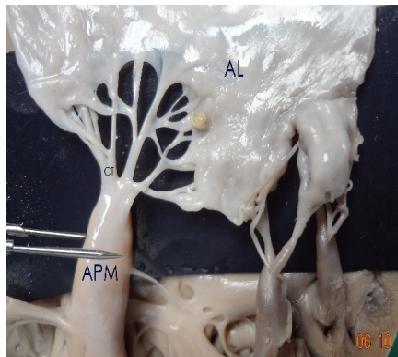
## **OBSERVATIONS AND RESULTS**

In the present study, number of papillary muscles was present with a frequency of 2-10. Maximum numbers of papillary muscles were 10 seen in only one heart (1%) and minimum numbers of papillary muscles were 2 seen in 3 hearts (3.1%). Anterior papillary muscles were present in all 96 (100%) hearts. Maximum numbers of muscles observed were 3 seen in 6 hearts (6.3%) and minimum number muscle was 1 seen in 66 (68.8%) hearts, which was normal. Two papillary muscles were seen in remaining 24 hearts (25%). Posterior papillary muscles were present in 95 (98.95%) hearts. Seven papillary muscles

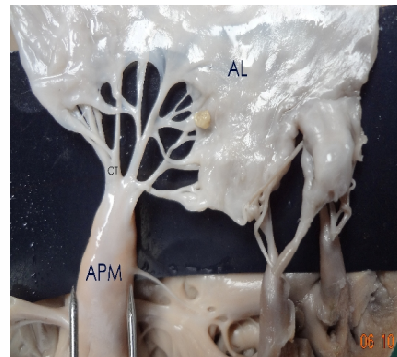
**Fig. 1:** Showing the measurement Procedure for Length of the Papillary muscle.



**Fig. 2:** Showing the measurement Procedure for Width of the Papillary muscle.



**Fig. 3:** Showing the measurement Procedure for Thickness of the Papillary muscle.



were observed in only 1 (1%) heart and only 1 papillary muscle was seen in 27 (28.1%) hearts. In measurements of papillary muscles, anterior papillary muscle mean height was  $1.49 \pm 0.44$  cm; mean width was  $0.82 \pm 0.21$  cm and mean thickness was  $0.64 \pm 0.15$  cm respectively and posterior papillary muscle mean height was  $1.05 \pm 0.37$  cm, mean width was  $0.63 \pm 0.17$  cm and mean thickness was  $0.5 \pm 0.11$  cm respectively.

## DISCUSSION

The number, length and shape of papillary muscles and chordae tendinae in the right ventricle are variable. This can be of clinical significance, since the papillary muscles play an important role in right ventricle contraction by drawing the Tricuspid annulus towards the apex, thereby causing shortening of the long axis and the chamber becoming spherical for ejecting blood [2].

**Table 1:** Comparison of incidence of papillary muscles.

Sl. No.	Studies	No. cases studied	Percentage of papillary muscles	
			APM	PPM
1	Present study	96	100%	100%
2	Balachandra N et al [3].	96	100%	100%
3	Gerola LR et al [4].	50	100%	84%
4	Nigri GR et al [5].	50	100%	100%
5	Motabagani MAB [6]	10	100%	100%
6	Begum et al [7].	50	92%	60%
7	Wafae N et al [8].	50	100%	100%

Observation regarding the percentage of papillary muscles in the present study was in agreement with all works except Begum et al. Possible reason for such difference is the number of specimens and method used in study.

There was minimal difference noted in the present study and work done by Gerola LR et al., regarding incidence of percentage of posterior papillary muscles. Possible reason for such difference is the number of specimens, geography and race of specimens studied.

In the present study all the papillary muscles were measured for height, width and thickness. Mean height of APM was 1.49 cm ranged between 0.6 cm to 2.9 cm, mean width was 0.8 cm ranged between 0.3 cm to 1.4 cm and mean thickness was 0.64 cm ranged between 0.2 cm and 1 cm. Mean height of PPM was 1.05 cm ranged between 0.3 cm to 3.3 cm, mean width was 0.6 cm ranged between 0.2 cm to 1.2 cm and mean thickness was 0.5 cm ranged between 0.2 cm and 0.8 cm. So, anterior papillary muscle is the largest muscle compared to posterior papillary muscles.

Observations of mean height was significantly higher in anterior and posterior papillary muscles and observations of mean width was significantly lower in anterior compared to study done by Gerola LR et al. Possible reason for such difference is the number of specimens studied.

**Table 2:** Comparison of measurements of papillary muscles.

Sl. No.	Studies	No. cases studied	Measurements of papillary muscles (cm)					
			Mean height		Mean width		Mean thickness	
			APM	PPM	APM	PPM	APM	PPM
1	Present study	96	$1.49 \pm 0.4$	$1.05 \pm 0.4$	$0.8 \pm 0.2$	$0.6 \pm 0.2$	$0.6 \pm 0.2$	$0.5 \pm 0.1$
2	Gerola LR et al [4].	50	$0.9 \pm 0.2$	$0.9 \pm 0.2$	$1.2 \pm 0.3$	$0.7 \pm 0.2$	-	-
3	Nigri GR et al [5].	79	1.9	1.1	-	-	-	-



The observations of mean height of papillary muscles were in agreement with work done by Nigri GR et al. But none of the above mentioned authors commented about thickness of the papillary muscles.

Anatomical variations of papillary muscles would be useful in newer surgical techniques like papillotomy and commissurotomy in rheumatic lesions, leaflet resection in advanced myxomatous lesions, excision of infective vegetation, transfer and rotation of leaflet segments in traumatic conditions and in correction of papillary rupture induced Tricuspid regurgitation. Tricuspid valve in congenital anomalies like Ebstein's malformations, dysplasia, straddling is complicated because the tendinous chords and papillary muscles are often abnormally short and thick. So knowledge of a detailed morphology of papillary muscle is more and more necessary for cardiothoracic surgeries of these conditions [9].

## CONCLUSION

The present study to understand the anatomy of the constituent parts of the tricuspid valve complex not only helped examination of these parts in cross sectional interrogation but also enhanced appreciation of valvular anomalies. Knowledge regarding high variability of papillary muscles in the valve is helpful in corrective treatment of congenital disease like Ebstein's disease and severe functional Tricuspid regurgitation. Any variation in the attachments of muscle and their number, size and shape or their absence may cause prolapse of the leaflets. Regurgitation is a consequence of deformity, shortening and retraction of one or more leaflets of the Tricuspid valve as well as shortening and fusion of the papillary muscles [10].

**Conflicts of Interests: None**

## REFERENCES

- [1]. Standring S, Borley NR, Collins P, Crossman AR, Gatzoulis MA, Healy JC, et al. Gray's Anatomy: The Anatomical Basis of Clinical Practice. 40<sup>th</sup> ed. Philadelphia: Churchill Livingstone Elsevier; 2008. pp. 966-7.
- [2]. Hashimoto K, Oshiumi M, Takakuva H, Sasaki T, Onoguchi K. Congenital mitral regurgitation from absence of the anterolateral papillary muscle. *Ann Thorac Surg* 2001;72:1386-7.
- [3]. Balachandra N, Rathnam BPP. A Study of the dimensions of the Human Tricuspid valve and attachment of chordae tendinae. <http://www.rguhs.ac.in/digitallibrary/hardbibilo/medical-doc>. Accessed on 20-7-2011 at 2.40 pm.
- [4]. Gerola LR, Wafae. N, Vieira MC, Juliano Y, Smith R, Prates JC. Anatomic study of the Tricuspid valve in children. *Surg Radiol Anat* 2001;23:149-53.
- [5]. Negri GR, Didio LJA, Baptista CAC. Papillary muscles and tendinous chords of the right ventricle of the human heart morphological characteristics. *Surg Radiol Anat* 2001;23:45-9.
- [6]. Motabagani MAB. Comparative, morphometric and histological studies of the Tricuspid valve complex in human and some mammalian hearts. *J Anat Soc India* 2006;55(1):1-23.
- [7]. Begum JA, Khalil M, Rahman H, Adiluzzaman AA. A morphological and morphometric study of the right ventricular papillary muscles of autopsied heart of Bangladeshi people. *Mymensingh Medical Journal* 2006;15(2):131-4.
- [8]. Wafae. N, Hayashi. H, Gerola LR, Vieira MC. Anatomical study of the human Tricuspid valve. *Surg Radiol Anat* 1990;12:37-41.
- [9]. Joudinaud TM, Flecher EM, Duran CMG. Functional terminology for the Tricuspid valve. *J Hear Valve Dis* 2006 May;15(3):382-8.
- [10]. Ootaki Y, Yamaguchi M, Yoshimura N, Oka S, Yoshida M, Hasegawa T. Tricuspid valve repair with papillary muscle shortening for severe Tricuspid regurgitation in children. *Ann Thorac Surg* 2004;78:1486.

### How to cite this article:

Harsha B. R, Chandrashekar K.T. CADAVERIC STUDY ON ANTERIOR AND POSTERIOR PAPILLARY MUSCLES OF TRICUSPID VALVE. *Int J Anat Res* 2015;3(1):865-868. **DOI:** 10.16965/ijar.2015.103