

# Porcelain Laminates an Overview

**P**orcelain veneers, alternatively termed dental veneers or dental porcelain laminates, are wafer-thin shells of porcelain that are bonded on to the front side of teeth so to create a cosmetic improvement for a tooth. Porcelain veneers are routinely used by dentists as a way to make cosmetic changes for teeth that are discolored, worn, chipped, or misaligned.

Porcelain veneer technique is an offshoot of the basic science of cosmetic dental bonding. Dentists have had materials available to them for decades that are capable of creating a tenacious bond with tooth enamel.

Porcelain veneer technique utilizes the bonding capability of these materials to securely attach a thin shell of porcelain (the porcelain veneer) to a tooth. Although porcelain is inherently brittle, when it is firmly bonded to a sturdy substructure (a tooth) it becomes very strong and durable.

## Uses

1. The glass like porcelain veneer is a close match to natural tooth enamel. This is because porcelain veneers are translucent, like real tooth enamel.
2. Very pleasing aesthetics can be obtained, with minimal tooth preparation (i.e. drilling).
3. Veneers may be used cosmetically to resurface teeth such as to make them appear straighter and possess a more aesthetically pleasing alignment. This may be a quick way to improve the appearance of malposed teeth without need to use orthodontics

## Advantages over other type of dental bonding procedures

1. Many veneer procedures can be done with the use of little or no local anesthetic.
2. There are some veneers which do not require any drilling in order to remove tooth structure. Instead, these veneers are constructed to be placed on top of teeth. As a result, treatment is less invasive and may be less time-consuming.
3. **Porcelain veneers resist staining.** As a group, cosmetic dental bonding materials have the shortcoming of being susceptible to staining and discoloring. This is especially true when they are used in conjunction with individuals whose consumption habits include the use of tea, coffee, red wine, and tobacco products.
4. Since porcelain veneers are glass-like in nature (ceramic) they have a great advantage over other cosmetic bonding techniques by way of the fact that they are translucent. When a porcelain veneer is bonded onto a tooth's surface it will closely mimic the light handling characteristics of dental enamel.

## Disadvantages

1. Porcelain veneers have potential to break or come off.
2. Having porcelain veneers placed is not a reversible process.

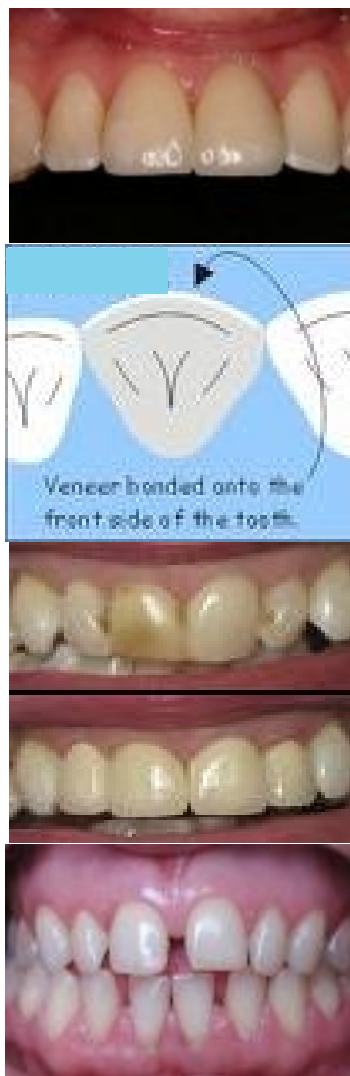


**VINAY GUPTA**

BDS (STUDENT)  
SUDHA RUSTAGI COLLEGE OF DENTAL  
SCIENCES AND RESEARCH, FARIDABAD  
E-MAIL : [vinayjindalthegreat@gmail.com](mailto:vinayjindalthegreat@gmail.com)

3. Porcelain veneers cannot be placed on unhealthy teeth.
4. Placing a porcelain veneer on a tooth will not provide a strengthening effect.
5. Porcelain veneers must be bonded to tooth enamel
6. Porcelain veneers are not a good choice for people who clench and grind their teeth.

## FIGURES RELATED TO PORCELAIN LAMINATES



References : Internet