

## Cloning, Expression, and *In Vitro* Functional Activity Assay of phiC31 Integrase cDNA in *Escherichia coli*

Mohammad Hadi Sekhavati, M.Sc.<sup>1</sup>, Mojtaba Tahmoorespur, Ph.D.<sup>1</sup>, Kamran Ghaedi, Ph.D.<sup>2, 3\*</sup>, Kianoush Dormiani, Pharm.D.<sup>2, 4</sup>, Mohammad Reza Nassiri, Ph.D.<sup>1</sup>, Yahya Khazaie, Pharm.D.<sup>2</sup>, Mahboubeh Foruzanfar, B.Sc.<sup>2</sup>, Morteza Hosseini, D.V.M.<sup>5</sup>, Mohammad Hossein Nasr Esfahani, Ph.D.<sup>2,5\*</sup>

1. Department of Animal Science, Ferdowsi University of Mashhad, Mashhad, Iran
2. Department of Molecular Biotechnology at Cell Science Research Center, Royan Institute for Biotechnology, ACECR, Isfahan, Iran
3. Department of Biology, School of Sciences, University of Isfahan, Isfahan, Iran
4. Department of Pharmaceutical Biotechnology, Faculty of Pharmacy and Pharmaceutical Sciences, Isfahan University of Medical Sciences, Isfahan, Iran
5. Department of Reproductive Biotechnology at Reproductive Biomedicine Research Center, Royan Institute for Biotechnology, ACECR, Isfahan, Iran

\* Corresponding Addresses: P.O.Box: 8165131378, Department of Molecular Biotechnology at Cell Science Research Center, Royan Institute for Biotechnology, ACECR, Isfahan, Iran  
Emails: kamranghaedi@royaninstitute.org, mh\_nasr@royaninstitute.org

Received: 4/Jan/2012, Accepted: 23/Jul/2012

### Abstract

**Objective:** The aim of present study was cloning and expression of phiC31 integrase cDNA in a bacterial expression vector. Thus, an intra molecular assay vector was applied to show *in vitro* activity of recombinant protein.

**Materials and Methods:** In this experimental study, phiC31 cDNA was subcloned into a prokaryotic expression vector and transformed into *E.coli* BL21 (DE3). Recombinant phiC31 integrase was purified from the bacterial cell lysates and its activity was verified by an *in vitro* functional assessment.

**Results:** Sodium dodecyl sulfate-polyacrylamide gel electrophoresis (SDS-PAGE) of the purified phiC31 integrase confirmed the size of protein (70 kDa). Finally, the functionality of purified phiC31 integrase was verified.

**Conclusion:** The results of this study indicated that the purified integrase has a great potential application for *in vitro* site-specific integration.

**Keywords:** phiC31, Site-Specific Integration, *E. coli* BL21 (DE3)

Cell Journal(Yakhteh), Vol 14, No 4, Winter 2013, Pages: 264-269

**Citation:** Sekhavati MH, Tahmoorespur M, Ghaedi K, Dormiani K, Nassiri MR, Khazaie Y, Foruzanfar M, Hosseini M, Nasr Esfahani MH. Cloning, expression, and *in vitro* functional activity assay of phiC31 integrase cDNA in *Escherichia coli*. Cell J. 2013; 14(4): 264-269.

## Introduction

phiC31 integrase is a site-specific recombinase, which is produced by a kind of bacteriophage (phiC31) in a strain of *Streptomyces* (1, 2). This enzyme is a member of serine recombinases that has an accurate and specific function to recombine DNA fragments between two identified sites, with approximately 30 base pairs (3). In nature, these two sites, *attP* and *attB*, are present in the phage

and its host (*Streptomyces*) genomes, respectively (1). phiC31 integrase has a well ability to recombine these two sites and generate the hybrid *attL* and *attR* sites, which cannot be reacted by this enzyme, inversely. Moreover, phiC31 integrase is not required to have any host-specific co-factors for its activity. These two unique features of phiC31 integrase among other recombinases make

it appropriate for *in vitro* site-specific recombination (4). On the other hand, several studies have reported that there are some site-specific regions in the mammalian genomes similar to *attP*, which are known as pseudo *attP* (5, 6, 7). These reports encouraged researchers to investigate the use of phiC31 integrase as a tool in human gene therapy and creation of transgenic animals (5, 8, 9).

The integrase open reading frame encoding phiC31 integrase protein was previously identified by Kuhstoss and Rao in 1991 (1). Functional protein, has two main domains, including the N-terminal (NTD) and C-terminal domain (CTD) (10). The NTD involves in catalytic activity for DNA cleavage, strand exchange and joining of recombination products (11, 12), while CTD is responsible for DNA binding, controlling of integration, and excision (13, 14).

One of the unique features of phiC31 integrase is its ability for *in vitro* site-specific recombination. Thorpe and Smith showed *in vitro* using of phiC31 integrase could combine two plasmids, containing att sites, which generated one recombinant plasmid (4). Therefore, it seems that recombinant phiC31 integrase could be useful for further approaches in genetic engineering for site-specific recombination. In this study, we produced and purified the expressed phiC31 integrase from *E. coli* BL21 (DE3). Then *in vitro* activity of recombinant enzyme was determined.

## Materials and Methods

### Plasmids

Plasmids pCMVInt and pBCPB<sup>+</sup> (Fig 1) containing phiC31 cDNA (GenBank accession no. X59938) and *att* site sequences, respectively, were gifts from Prof. M.P. Calos (Stanford University, USA) (3). Integrase-expressing plasmid was constructed as follows: pCMVInt vector was digested by *Kpn*I, and then was blunted using klenow fragment (Fermentas, Lithuania). In the second step, *Bam*HI excised the cDNA of phiC31 from pCMInt. At the same time, pET15b plasmid was digested by *Nde*I. Then, it was blunted by klenow fragment, and digested with *Bam*HI. pET15b (Novagen, CA, USA), backbone and integrase open reading frame, were extracted from the gel and ligated using DNA Ligation Kit (TaKaRa, Japan) (Fig 2). The recombinant pET-Int expression plasmid was amplified in a DH5 $\alpha$  strain of *E. coli* (Invitrogen, USA) and sequenced with specific primer.

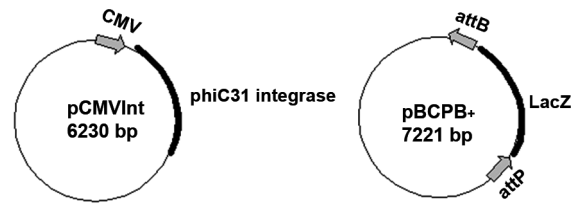


Fig 1: Schematic diagrams of two plasmids used for phiC31 integrase expression and *in vitro* phiC31 integrase activity.

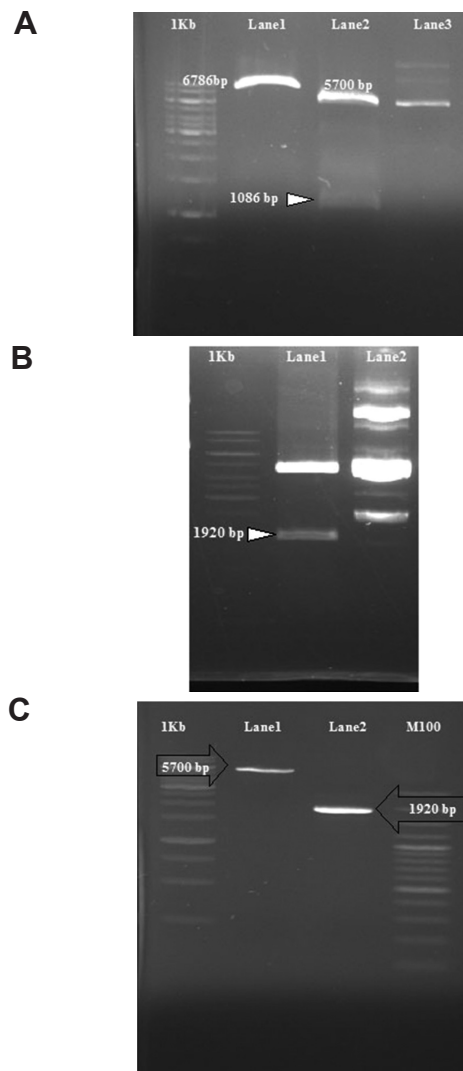


Fig 2: The pattern of restriction enzyme digestion on pET15b and pCMVInt A: Single digestion on pET15b with *Bam*HI (Lane 1), double digestion on pET15b with *Nhe*I & *Bam*HI (Lane 2) and undigested pET15b (Lane 3). B: double digestion on pCMVInt with *Kpa*I & *Bam*HI (Lane 1) and undigested pCMVInt (Lane 2). C: linearized pET15b plasmid (Lane 1) and phiC31 integrase open reading frame (Lane 2) after gel extraction.

### Expression and purification of *phiC31* integrase

*E. coli* BL21 (DE3) was transformed with 6xHis tagged *phiC31* cDNA in pET15b, under induction with 1mM IPTG (Thermo Scientific, USA), and resulted protein was purified under non-denaturing condition using Nickel Affinity Gel Nickel Affinity Gel (Sigma, USA) according to manufacturer's protocol. Protein concentration was assessed by Bradford method (15). Purified protein was concentrated by Amicon-ultrafiltration15 (Millipore, MA, USA). For evaluation of protein expression, the sodium dodecyl sulfate-polyacrylamide gel electrophoresis (SDS-PAGE) carried out.

The purified protein was frozen using submerging the samples in liquid nitrogen and rapidly was stored at  $-80^{\circ}\text{C}$ . For maintenance of enzyme activity during the freezing process, the purified protein was preserved in 50% glycerol.

### *In vitro* evaluation of *phiC31* integrase activity

For *in vitro* functionality assessment of *phiC31* integrase, pBCPB<sup>+</sup> plasmid (Fig 1) was used as an intra-molecular assay vector. pBCPB<sup>+</sup> plasmid was incubated with crude lysate of transformed *E. coli*. *In vitro* recombination reactions included 1  $\mu\text{g}$  of pBCPB<sup>+</sup>, 1  $\mu\text{g}$  of crude lysate containing integrase, 20 mM Tris-HCl (pH= 7.5), 100 mM NaCl, 0.1 mM EDTA, and 1% glycerol in a final volume

of 20 ml. Reactions were carried out at  $37^{\circ}\text{C}$  for 1 hour, and then heat inactivated at  $80^{\circ}\text{C}$  for 20 minutes.

### PCR screening for *in vitro* site-specific recombination

One  $\mu\text{l}$  of *in vitro* recombination reaction was used as template in PCR for detection of *in vitro* site-specific recombination. Each PCR reaction contained 5 pM forward (5'-GGCGAGAAA-GGAAGGAAGA-3') and reverse (5'-ATTAACCCTCACTAAAGGGA-3') primer, 10 units of Ex-Taq DNA polymerase, 10 mM Tris-HCl (pH=7.9), 50 mM KCl, 1.5 mM MgCl<sub>2</sub>, 200  $\mu\text{M}$  dNTPs. Touch-down PCR was performed as follows:  $94^{\circ}\text{C}$  for 4 minutes, 14 cycles of  $94^{\circ}\text{C}$  for 30 seconds,  $66^{\circ}\text{C}$  for 30 seconds which was decreased  $0.3^{\circ}\text{C}$  per each cycle, gradually,  $72^{\circ}\text{C}$  for 45 seconds, 27 cycles of  $94^{\circ}\text{C}$  for 30 seconds,  $62^{\circ}\text{C}$  for 30 seconds, and  $72^{\circ}\text{C}$  for 45 seconds. Final extension of PCR was carried out at  $72^{\circ}\text{C}$  for 7 minutes. PCR products were visualized on 2% agarose gel.

## Results

The result of sequencing indicated that there was no mutation in *phiC31* integrase cDNA sequence. On the other hand, the start codon (GTG) was placed in the same reading frame down-stream of 6xHis tag (Fig 3).

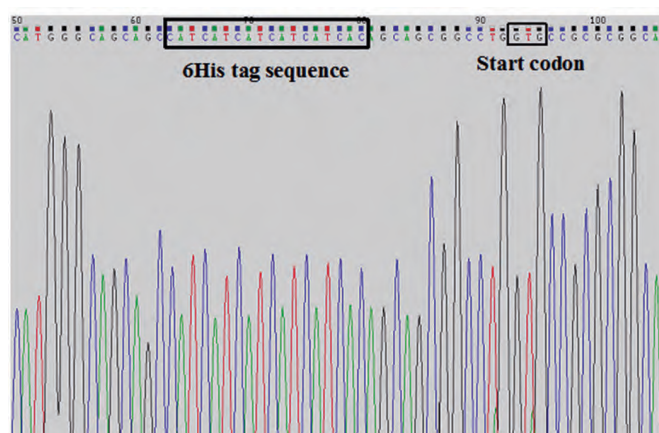


Fig 3: The results of partial *phiC31* integrase cDNA sequencing.

SDS-PAGE gel electrophoresis showed that the phiC31 integrase was expressed appropriately with the same expected size (70 kDa) in *E. coli* (Fig 4). Upon purification step of integrase, its concentration was determined by the Bradford assay method, which was 0.75 µg/µl.

*In vitro* phiC31 activity was confirmed using intra-molecular assay vector (pBCPB<sup>+</sup>) both by fresh and frozen-thawed protein. As the molecular assay vector contains both *attP* and *attB* sites in appropriate orientations (Fig 1) and intervening

sequences. Having proper phiC31 integrase activity, recombination occurs in the vector of the specific DNA fragment located between *attP* and *attB*. This deletion could be verified easily by PCR (Fig 5). Data was evident that when the pBCPB<sup>+</sup> assay plasmid was incubated with either fresh or frozen-thawed types of integrase, site-specific recombination was performed in the expected manner *in vitro* generating a 400 bp product, which was amplified in a PCR reaction (Fig 6).

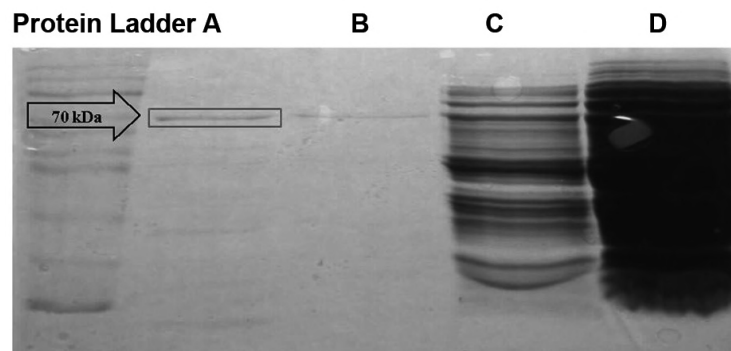


Fig 4: Expression of phiC31 integrase in *Escherichia coli*.

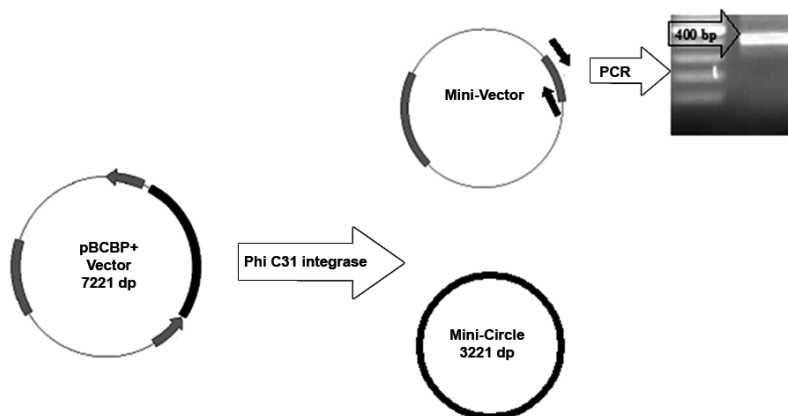
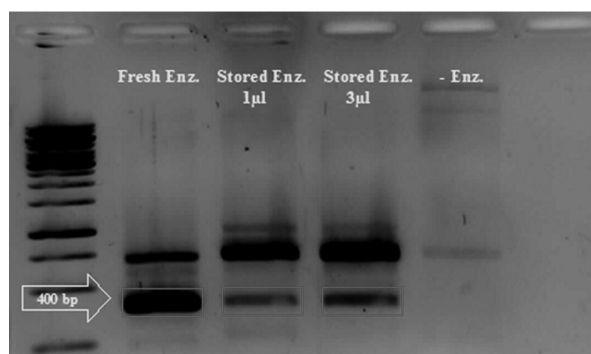


Fig 5: Schematic manner of *in vitro* phiC31 integrase activity on intra-molecular assay vector. pBCPB<sup>+</sup> contains *attP* and *attB* sites which are flanked of *LacZ* encoding sequence specific for intra-molecular assay. Functional phiC31 integrase creates two mini-circles according to *att* sites orientation on pBCPB<sup>+</sup>. A 400-bp product is indicative of site-specific recombination.





**Fig 6:** *In vitro* assessment of *phiC31* integrase activity.

## Discussion

Nowadays *phiC31* integrase plays a powerful role in genetic engineering particularly in the field of stem cells and transgenic animals. Due to some unique features of *phiC31* integrase including unidirectional activity and appropriate functionality without any co-factors requirement, this enzyme has been widely used in gene therapy and gene targeting (4). In our previous study, we utilized this system for creation of a stable Chinese hamster ovary (CHO) cell line expressing secretory type of tenecteplase protein (16). In this study, we tried to produce a recombinant type of *phiC31* integrase protein in *E.coli*. The SDS-PAGE analysis showed that *phiC31* integrase was appropriately expressed with the expected size (70 kDa) (Fig 4). Notably, the extracted protein maintained its activity after purification. In order to test the functionality of the *phiC31* integrase, pBCPB<sup>+</sup> was used as an intra-molecular assay vector (Fig 1). Especially, the presence of four amino acid residues (Ser-Ser-Gly-Leu) between 6xHis-tag and transcription start site of *phiC31* integrase did not hamper enzyme activity as expected. Due to the presence *LacZ* sequence between two *att* sites orientation, the functional *phiC31* integrase enzyme was able to delete DNA fragment encoding *LacZ* which created two mini-circles (Fig 5). Amplifying 400 bp product in PCR reaction indicated that the recombinant integrase protein had site-specific recombination activity (Fig 6). Similar approach for evaluation of *phiC31* integrase activity reported in previous studies which have shown co-transfection of pCMVInt

and pBCPB<sup>+</sup> plasmids into human and bovine cells, caused generation of a specific 400 bp as an indicator for *phiC31* activity (3, 6, 17). PCR screening for site-specific integration showed that the *phiC31* integrase was functional even after snap-freezing despite the slight decrease in enzyme activity (Fig 6). It seems that deep freeze storage of recombinant *phiC31* integrase have negative effect on its activity (Fig 6). In this regards, recently, McEwan et al. (18) have proposed a buffer containing Zn<sup>2+</sup> as an essential factor for high-affinity DNA binding and recombinase activity of *phiC31* integrase. Applying this buffer may improve *in vitro* *phiC31* activity after freezing which needs to be investigated in future studies.

## Conclusion

The results showed that the produced recombinant protein has reasonable functionality *in vitro*. Thus it could be useful to be used in our next studies including protein microinjection in oocyte in the aim of creation of transgenic animal or gene therapy.

## Acknowledgments

The authors would like to express their gratitude to Royan Institute for their full supports. There is no conflict of interest in this article.

## References

1. Kuhstoss S, Rao RN. Analysis of the integration function of the streptomycete bacteriophage *phiC31*. *J Mol Biol.* 1991; 222(4): 897-908.
2. Rausch H, Lehmann M. Structural analysis of the actinophage *phi C31* attachment site. *Nucleic Acids Res.* 1991; 19(19): 5187-5189.
3. Groth AC, Olivares EC, Thyagarajan B, Calos MP. A phage integrase directs efficient site-specific integration in human cells. *Proc Natl Acad Sci USA.* 2003; 97(11): 5995-6000.
4. Thorpe HM, Smith MC. In vitro site-specific integration of bacteriophage DNA catalyzed by a recombinase of the resolvase/invertase family. *Proc Natl Acad Sci USA.* 1998; 95(10): 5505-5510.
5. Hollis RP, Stoll SM, Sclimenti CR, Lin J, Chen-Tsai Y, Calos MP. Phage integrases for the construction and manipulation of transgenic mammals. *Reprod Biol Endocrinol.* 2003; 1: 79.
6. Ma QW, Sheng HQ, Yan JB, Cheng S, Huang Y, Chen-Tsai Y, et al. Identification of pseudo attP sites for phage *phiC31* integrase in bovine genome. *Biochem Biophys Res Commun.* 2006; 345(3): 984 - 988.
7. Chalberg TW, Portlock JL, Olivares EC, Thyagarajan B,

## Expression and Functional Activity of phiC31

- Kirby PJ, Hillman RT, et al. Integration specificity of phage phiC31 integrase in the human genome. *J Mol Biol.* 2006; 357(1): 28-48.
8. Groth AC, Fish M, Nusse R, Calos MP. Construction of transgenic *Drosophila* by using the site-specific integrase from phage phiC31. *Genetics.* 2004; 166(4): 1775-1782.
  9. Ginsburg DS, Calos MP. Site-specific integration with phiC31 integrase for prolonged expression of therapeutic genes. *Adv Genet.* 2005; 54:179-187.
  10. Smith MC, Thorpe HM. Diversity in the serine recombinases. *Mol Microbiol.* 2002; 44(2): 299-307.
  11. Grindley ND, Whiteson KL, Rice PA. Mechanisms of site-specific recombination. *Annu Rev Biochem.* 2006; 75: 567-605.
  12. Yuan P, Gupta K, Van Duyne GD. Tetrameric structure of a serine integrase catalytic domain. *Structure.* 2008; 16(8): 1275-1286.
  13. Ghosh P, Pannunzio NR, Hatfull GF. Synapsis in phage Bxb1 integration: selection mechanism for the correct pair of recombination sites. *J Mol Biol.* 2005; 349(2): 331-348.
  14. Rowley PA, Smith MC, Younger E, Smith MC. A motif in the C-terminal domain of phiC31 integrase controls the directionality of recombination. *Nucleic Acids Res.* 2008; 36(12): 3879-3891.
  15. Bradford MM. A rapid and sensitive method for the quantitation of microgram quantities of protein utilizing the principle of protein-dye binding. *Anal Biochem.* 1976; 72: 248-254.
  16. Dormiani K, Khazaie Y, Forouzanfar M, Ghaedi K, Mofid MR, Karbalaie K, et al. Creation of teneceplase producing CHO cell line using site specific integrase from phiC31 phage. *Cell J.* 2010; 12(2): 207-214.
  17. Sekhavati MH, Dormiani K, Ghaedi K, Khazaie Y, Hosseini M, Tahmoorespur M, et al. Identification of a Specific Pseudo attP Site for Phage phiC3 Integrase in the Genome of Chinese Hamster in CHO-K1 Cell Line. *Iranian J of Biotechnol.* 2013; In press.
  18. McEwan AR, Raab A, Kelly SM, Feldmann J, Smith MC. Zinc is essential for high-affinity DNA binding and recombinase activity of phiC31 integrase. *Nucleic Acids Res.* 2011; 39(14): 6137-6147.
-