

Artificial neural networks in forecasting tourists' flow, an intelligent technique to help the economic development of tourism in Albania.

Dezdemona Gjylapi, MSc, PhD Candidate
University "Pavaresia" Vlore, Albania

Veronika Durmishi, PhD
University "Pavaresia" Vlore, Albania

Abstract

Tourism plays an important role in many economies and contributes greatly to the Gross Domestic Product.

In the past eight years, the number of tourist arrivals in Albania has increased rapidly, which resulted in increasing the number of tourist nights and revenue from tourism.

Tourism also provides new sources of income for the country, without having that local citizen to pay more taxes. This can be achieved by income from parking, tourist taxes, leased apartments, sales information, etc.

Early prediction on the tourist inflow mainly focuses on econometric models that have as a main feature the tourism demand being predicted by analysing factors that affect the tourists' inflow. This approach results in being difficult, time-consuming and also expensive to determine econometric models. Traditional time series methods, such as exponential smoothing method, grey prediction method, linear regression method, ARIMA method etc., are more appropriate for the prediction of the tourist inflow. However, since they don't apply a learning process on sample data, it is difficult for them to realize complicated and non-linear prediction on tourist inflow ^[1].

The aim of this paper is to present the neural network usage in the tourists' number forecasting and to determine the trends of the future tourist inflow, thus helping tourism management agencies in making scientific based financial decisions.

Keywords: tourist inflow; tourism economy; neural networks; neuro-genetic; BPNN

The role of tourism in economic restructuring

Travel & Tourism is one of the world's largest industries accounting 9% of global GDP of 2011. This is more than the automotive industry which accounts for 8.5%, and only slightly less than the banking sector which accounts for 11% ^[2].

Tourism is under an ongoing process and is one of the sectors with the fastest economic growth in the world, which has vastly expanded in the recent years. Tourism

is not just an activity, but is a collection of very special and similar activities, which include: transportation, accommodation, food and drinks, different services, culture and entertainment, conventions and trade shows, sports, etc. In addition, there are some activities that are critical success factors of the tourism, which include: financial services, telecommunication, health, and other services, such as electricity, water, and life security.

All these extensive activities come together in the production and consumption of tourism, starting with accommodation in hotels as a major tourism activity and continuing further with suppliers of inputs that are necessary for immediate consumption, such as meat and fish, dairy products, vegetables, and beverages. Tourism also establishes relationships between the construction companies and the equipment and uniforms manufacturers^[3]. There are other important links to tourism hotels apart, and production of goods or services used by tourists, such as handicrafts, shopping, musical performances, health treatments and the employment of people working as guides. Most developed countries have estimated that the tourism economy generates jobs and income almost two times more than other similar sectors in developing countries^[4].

Relevance of tourists inflow forecasting

Tourism is seen as an economic activity that generates both positive and negative impacts, but sustainable tourism aims to achieve the best balance between economic benefits and environmental and social costs^[4]. A sustainable tourism should make an optimum use of resources, minimize the environmental, cultural and social impacts, as well as maximize the benefits of preserving the communities^[5].

Forecasting the tourist inflow is of great importance for the tourism operators and managers, because by knowing the tendency of tourist inflow, is done the planning of this sector regarding the accommodation and the transport. Even though in economic terms, it is desirable to have as many tourists as possible, the cities are not always ready and prepared to accommodate ten times more visitors per day as local residents during the summer^[4].

Forecasting of tourist inflow is of great importance in the forecasting the expected revenues to be realized from this activity, and the impact that these revenues have on the GDP.

With the tourists inflow forecast is related also the loan guarantee that banks can predict for providing short-and long-term investments in this sector, as well as helping the tourism agencies in the preparation of joint tourist guides.

Also, the prediction of tourist inflow empowers the local governments to organize various events with the tourists. Tourists' activities tend to make tourists live in a more interesting and exciting place.

The more developed countries have estimated that the tourism economy generates jobs and income almost two times more compared to other similar sectors in developing countries.

Different statistical methods are generally used for forecasting the tourists' inflow, but their use encounters difficulties as they are time-consuming, this because they use the factors affecting the number of tourists, are expensive, and they do not learn from past data. In this article we present an intelligent technique such as neural networks for forecasting the number of tourists.

Artificial neural networks overview

Artificial Neural Networks (ANNs) provide powerful models for statistical data analysis. Their most prominent feature is their ability to "learn" dependencies based on a finite number of observations ^[6].

ANN is a mathematical model that performs a computational simulation of the behavior of its biologic counter-part. Neural networks have been used in many business applications for pattern recognition, forecasting, prediction, and classification, due to their ability to "learn" from the data, their nonparametric nature and their ability to generalize ^[7]. The most typical application areas of neural networks include finance, marketing, manufacturing, operations, information systems, and so on.

The first step in developing an ANN comprises the definition of the network architecture, which is defined by the basic processing elements (i.e. neurons) and by the way in which they are interconnected (i.e. layers).

The second step deals with the definition of the NN Learning, which implies that a processing unit is capable of changing its input or output behavior as a result of changes in the environment, i.e. to adjust the weights based on input vector values.

The third step finalizes the definition of the data used for training, testing and validating the neural network. These topics will be described in more details in the following sections.

Ann's architecture

An ANN may have one or more layers of neurons, which may be fully or partially connected. Each link between two nodes has a weight w_{ij} which summarizes the knowledge of the system. The processing of the existing cases with the inputs: x_1, x_2, \dots

x_j and the expected results, will adjust these weights based on the difference between the actual and the expected results.

The input layer nodes are passive, doing nothing but relaying the values from their single input to multiple outputs, while the hidden layer nodes and output layer nodes are active nodes, as depicted in Figure 1 [8].

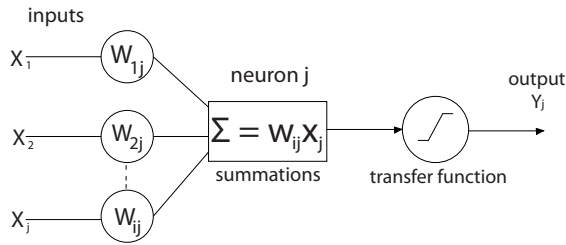


Figure 1. Active node structure

The total input of neuron j is calculated by the equation (1):

$$\sum_{i=1}^{i=j} w_{ij} x_j \tag{1}$$

The transfer function is also very important in the NN training process. We use the bipolar sigmoid activation function presented by the equation (2).

$$f(x) = \frac{2}{1 + e^{-\alpha x}} - 1 \tag{2}$$

We tested the model with different α values, and found that the best value in this case is $\alpha=1$.

The most common structure for a neural network is three layers with full interconnection.

In this study we use the programming language C# for the design and testing of ANN models. The ANN architecture used in this paper is shown in Figure 2.

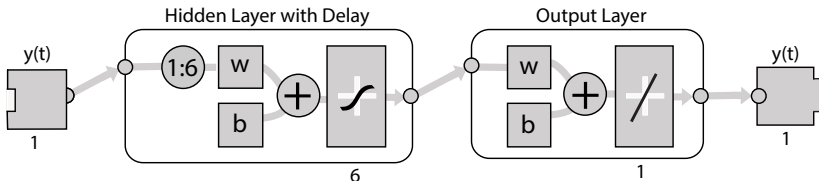


Figure 2. Neural Network Architecture used

The number of neurons in input layers depends on the independent variables, whereas the number in the output layers on the dependent variable. In this paper, the number of inputs is 6 (six neurons in input layer), meaning the number of tourists in six months, the hidden layer also has six neurons in our model, and the output is 1, meaning the number of tourists of the consecutive month.

The structure of the ANN is an important factor for correct training. A correct amount of hidden layers and nodes should be used. If more are used than those are required to learn the input-output relationship, there will be more weights than necessary, which can lead to over fitting of the data and bad performance when approximating unknown cases.

ANNs learning

Learning is the major issue for most of the neural networks' architectures. This makes the selection of a learning algorithm the major issue in the development of the network. Learning implies that a processing unit is capable of changing its input or output behavior because of the changes in the environment, i.e. to adjust the weights corresponding to the input vector^[9]. The whole process of the ANN learning has three continuous steps:

1. Calculate the interim results.
2. Compare the results with the desired objectives.
3. Adjustment of the weights and then start over the process till the required accuracy is achieved or another termination criterion is reached.

In this paper two neural networks have been implemented: the multilayer perceptron (MLP) neural networks trained by genetic algorithm (GA), and the MLP neural network trained by back-propagation (BP), both using bipolar sigmoid activation function.

Although BP - a gradient descending method - achieves very good performance in ANN training, we often use GA algorithm in the learning process of the ANN instead of it, in order to avoid wasting time and falling in a trap such as local minima. In the ANN training, the GA starts with a large population of vectors, called individuals, which are generated randomly. Each individual of the population represents a possible solution of the problem that is being analyzed. The individuals are selected to create new individuals (offspring) based on some selection criteria such as their fitness, the more adequate (fitting) they are, the more the chances they have for reproduction, and through the genetic operators it searches for the improved solutions.

ANNs' data sets

In order to verify the rationality of the model and the algorithm, this paper analyzes data about Albania. The sample interval involves monthly data about tourists' inflow

from January 2005 till June 2013, presented in Table 1. In accordance with the needs of the model, the dataset is divided into two parts, i.e., training and test set. The monthly data (99 months) about tourists' inflow from January 2005 to March 2013 belongs to the training set, whilst monthly data about tourists inflow in the interval April – June 2013 (3 months) constitute the test set. There are no official public data regarding the number of tourists from July 2013 till now, this can be due to the political changes and the restructuring of the responsible institutions. These data was stored in a .csv file and served as input to the neural network model.

Nr.	Month	Tourists number								
		2005	2006	2007	2008	2009	2010	2011	2012	2013
1	January	32.321	37.630	49.437	55.635	58.640	68.997	90.712	113.107	124.506
2	February	25.214	33.107	41.173	52.284	52.787	55.181	79.189	67.083	103.089
3	March	33.471	41.345	53.532	68.942	62.933	72.864	106.649	12.921	145.711
4	April	41.891	58.723	70.040	76.867	98.735	90.139	145.171	17.387	211.761
5	May	49.148	66.696	77.577	97.995	113.362	117.261	146.114	188.174	219.468
6	June	62.201	73.402	93.533	123.249	135.740	144.663	196.704	249.004	254.921
7	July	139.446	173.124	201.428	251.926	469.109	565.262	670.713	767.246	
8	August	163.681	197.976	215.120	257.185	411.252	711.546	684.886	957.427	
9	September	70.805	82.731	95.148	101.461	119.358	158.545	200.486	305.125	
10	October	49.286	57.181	75.109	91.319	100.783	128.452	149.917	180.786	
11	November	39.840	45.227	54.994	65.691	73.165	95.288	122.986	176.807	
12	December	44.533	58.914	71.674	87.584	90.181	94.701	140.123	128.397	

Table 1. Monthly statistical data about tourist inflow. Source: MTRS Albania

Results

In this paper two neural networks have been implemented: the multilayer perceptron (MLP) neural networks trained by a genetic algorithm (GA) – referred as neuro-genetic model - and the MLP neural network trained by back-propagation (BP), both using bipolar sigmoid activation function.

The main parameters of the GA used in neuro-genetic model were set as:

- Genetic population Size = 100
- Crossover probability in genetic population = 0.7
- Mutation probability in genetic population = 0.3
- Probability to add newly generated chromosome to population = 0.25

The results of this model are shown in Figure 3.

The main parameters of the BP used in the BPNN model were set as:

- Learning rate=0.3
- Momentum=0.2

The results of this model are shown in Figure 4.

We compare BPNN and the neuro-genetic model (NN trained by GA) with the Exponential Smoothing model to verify their accuracy and effectiveness.

Details about the comparison are shown in Figure 5. Standards for evaluation on each model's advantages and disadvantages is mainly realized by R the correlation coefficient of the training set and the test set, MAD and average error (especially MAD and the correlation coefficient R of the test set). The R stands for degree of relevance between the predicted value and the actual value, and MAD means the degree of deviation between predicted value and actual value. The closer the correlation coefficient R is to 1, the higher the degree of relevance between predicted value and actual value will be; the lower the value of MAD is, the smaller the deviation between predicted value and actual value will be. These measures of forecasting accuracy are shown in Table 2. The predicted value obtained by the neuro-genetic model is the most accurate.

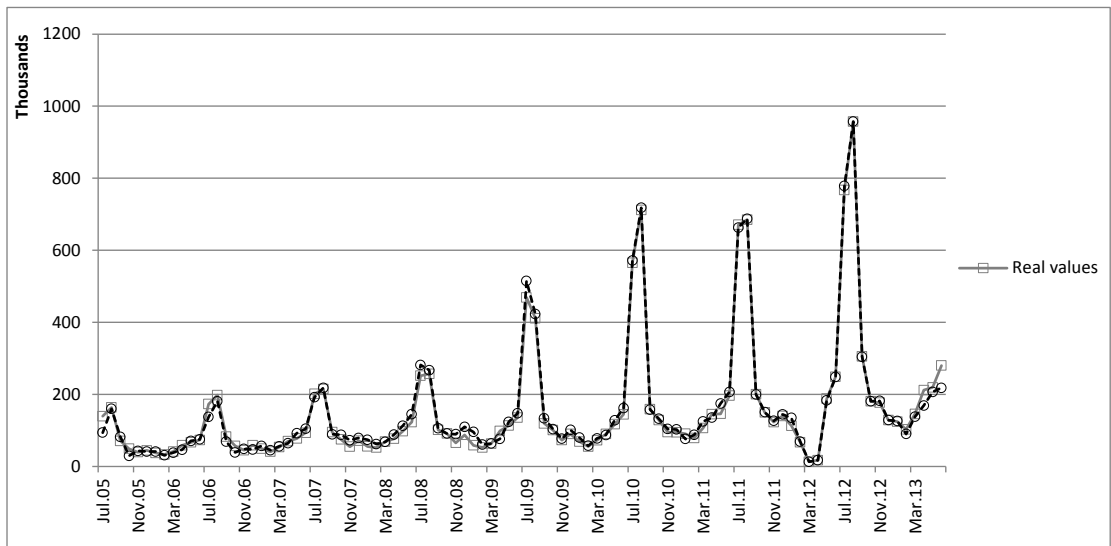


Figure 3. Predicted Values of BPNN Model

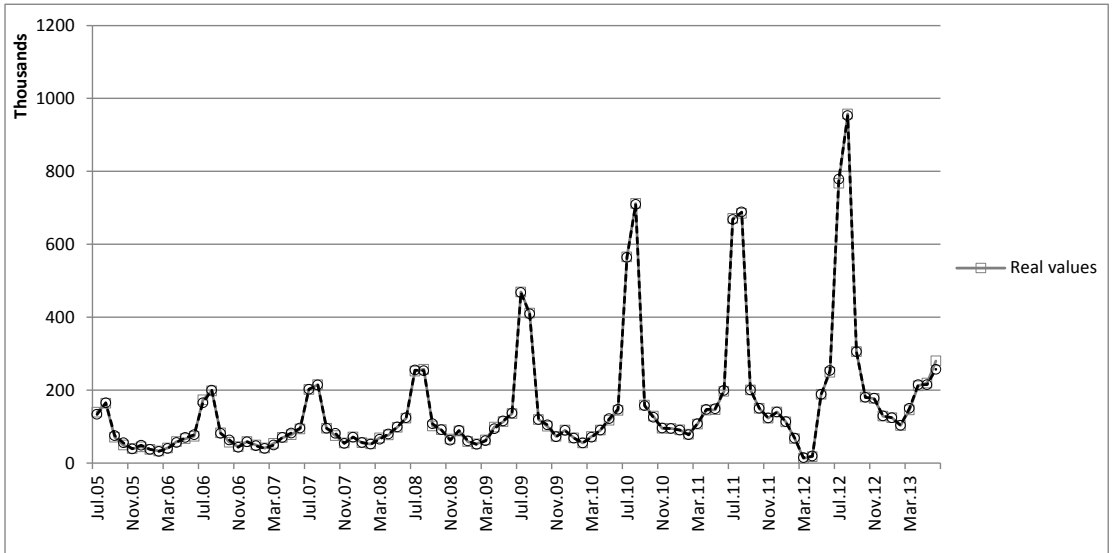


Figure 4. Predicted Values of neuro-Genetic Model

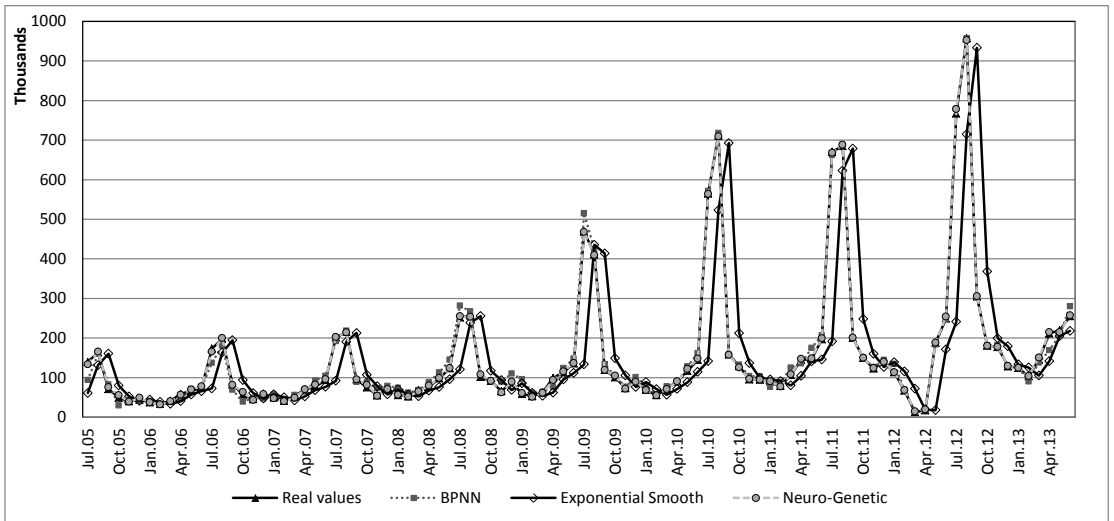


Figure 5. Comparison of forecasted values of each month by different methods

	BPNN	Exponential Smooth	Neuro- Genetic
R	0.998	0.614	0.999
TS	-3.7	2.72	-0.73
MAD	6935	71622	5512

Table 2. Measures of forecasting accuracy

Conclusion

- Tourism is not a simple activity; it comprises many similar and distinctive activities which include: transportation, accomodation, food, services, beverages, cultural entertainment, conventions, and trade shows.
- Using statistical models for the analysis of tourists inflow, we conclude that the trend of tourists' number in the future will be increasing and that the tourism phenomenon in Albania represents a constant and stable seasonality, both in numerical terms, as well as from the time aspect.
- The ANN models forecasted tourist flow in this study resulted very accurate, as indicated by the correlation coefficient R , $R_{BPNN} = 0.998$ and $R_{neuro-genetic} = 0.999$.
- The models tends to slightly over-forecast, with an average absolute error between 5512 units for neuro-genetic model and 6935units for BPNN.
- As long as the tracking signal (TS) is between -4 and 4 , in our models TS is equal to -3.7 for BPNN and -0.73 for neuro-genetic model, we can say that the model is working correctly. In general, ANN models require large amounts of data.
- Taking into consideration that features like seasonality, nonlinear nature, and small sample characterize the data about tourists' inflow, NN provides an effective and new method for prediction of tourists' inflow. The NN model doesn't need to know anything else about the tourism industry other than the time series of tourists' inflow.
- Forecasting the number of tourists is quite important for planning the development of the whole tourism industry.

Bibliography

1. Li-Juan Liu, "Tourist traffic prediction method based on the RBF neural network, Journal of Chemical and Pharmaceutical Research, 2014, 6(3):1121-1125, ISSN : 0975-7384
2. The Authority on World Travel & Tourism, "Travel & Tourism 2011"
3. <http://www.newtimes.co.rw/news/m/news.php?action=news&issue=15018&article=54592>
4. Ana Beban, Huseyin Ok "Contribution of Tourism to the Sustainable Development of the Local Community", 2006
5. Making tourism more sustainable, A Guide for Policy Makers, ISBN: 92-807-2507-6 (UNEP); ISBN: 92-844-0821-0 (WTO)

6. Antanasijević, Davor; Pocajt, Viktor; Popović, Ivanka; Redžić, Nebojša; Ristić, Mirjana : The forecasting of municipal waste generation using artificial neural networks and sustainability indicators, Sustainability Science; Jan2013, Vol. 8 Issue 1, p37
7. Priyanka Gaur, Neural Networks in Data Mining, International Journal of Electronics and Computer Science Engineering, ISSN- 2277-1956, Volume 1, Number 3 (p 1449- p1453)
8. Smith, S. W. : The Scientist & Engineer's Guide to Digital Signal Processing. California Technical Pub, 1997.
9. Alok Bhaskar Nakate, Neural Networks Non-Linear Scaling, California State University, 2011
10. Musaraj A., Tourism development, touristic local taxes and local human resources: A stable way to improve efficiency and effectiveness of local strategies of development, Academicus International Scientific Journal, ISSN 2079-3715, 2012, vol 6, pp 41- 46
11. Igor Mladenović, Aleksandar Zlatković "Some aspects of financial crisis influence on tourism industry in west balkan countries", 2008.
12. Ministry of Tourism, Youth and Sports "The tourism sector strategy 2007-2013
13. <http://www.instat.gov.al>