

## INFORMATION FOR CONTRIBUTORS

### EDITORIAL AND REVIEW PROCEDURES

**Journal of Baltic Science Education** (JBSE) publishes original scientific research articles in the field of Natural Science Education and related areas for all educational levels in the Baltic and other countries. It is possible to publish special (thematic) issues of JBSE. The papers should be submitted and will be published in English. JBSE will promote to establish contacts between researchers and practical educators both in the Baltic countries and countries around.

The authors of the manuscripts are responsible for the scientific content and novelty of the research materials. Articles, published before in other international journals or papers' collections will not be accepted for publication in JBSE.

As a publication that represents a variety of cross-disciplinary interests, both theoretical and practical, the JBSE invites manuscripts on a wide range of topics, especially in the following areas:

- Didactics of natural sciences.
- Theory and practice in natural science teacher education.
- Integrated natural science education.
- Natural science and technological literacy.
- General and professional natural science education.
- Philosophical, political, economical and social aspects of natural science education.
- The supplementary natural science education.
- ICT in natural science education.
- The standardisation of natural science education etc.

### MANUSCRIPTS GUIDELINES

*The structure of the research paper presented to the Journal of Baltic Science Education should be as follows: abstract - short report of the investigation; introduction inc. aim and subject of the research; research methodologies and methods; results of the research incl. discussion; conclusions; list of references in APA style.*

The papers should be submitted in English. If English is a second language for the author, please consider having the manuscript proof read and edited before submitting. The preliminary text of the article can be sent as a.doc file in the attachment by e-mail: mail.jbse@gmail.com

*The text must be elaborated in Word for Windows, using 12 point Times New Roman letters. An article should not exceed 7-10 A4 pages, included figures, tables and bibliography. Publishing of longer articles should be negotiated separately. Texts margins: top and bottom 20mm, left - 25mm, right - 20mm. The title: capital letters, 14pt, bold; space between the title and the author's name is one line interval. Author's name and surname: small letters, 12pt, bold. Under the name, institution: 11 pt, italics; space between the title and the text: 1 line interval. Abstract - about 100-150 words - precedes the text. The text: 12pt Single or Auto spacing, in one column. Key words: no more than five words. The language must be clear and accurate. The authors have to present the results, propositions and conclusions in a form that can suit scientists from different countries.*

*Titles of the tables and figures: 11 pt, small letters. Space between figures or tables and the text: 1 line interval. Introduction, titles of chapters and subchapters: 12pt, bold, small letters. Numbers: Arabic, subchapters numbered by two figures (1.1, 1.2, etc.). Figures, tables and captions should be inserted within the manuscript at their appropriate locations. Diagrams and graphs should be provided as finished black and white line artwork or electronic images. When there are a number of illustrations, the author should endeavour to reduce the amount of text to accommodate the illustrations in the limited space available for any article.*

References in the text should be presented in brackets (Knox, 1988; Martin, 1995). If necessary, the page can be indicated: (Martin, 1995, p.48). The list of references should be presented after the text. The Words List of References: 11pt, bold, small letters. The references should be listed in full at the end of the paper in the following standard form:

*For books:* Saxe, G.B. (1991). *Cultural and Cognitive Development: Studies in Mathematical Understanding*. Hillsdale, NJ: Erlbaum.

*For articles:* Bekerian, D.A. (1993). *In Search of the Typical Eyewitness*. *American Psychologist*, 48, 574-576.

*For chapters within books:* Bjork, R.A. (1989). *Retrieval Inhibition as an Adaptive Mechanism in Human Memory*. In: H.L. Roediger III & F.I.M. Craik (Eds.), *Varieties of Memory & Consciousness* (pp. 309-330). Hillsdale, NJ: Erlbaum.

**On a separate page, author - related data should be presented in English: name, surname, degree and academic title, institution, full correspondence address in the clearest and most complete form /ordinary post and e-mail addresses /, position (to ensure anonymity in the review process). The author (authors) should confirm in writing, that the manuscript has not been published in other journal or handed over (transferred) to other journal for publication.**

### EDITORIAL AND REVIEW PROCEDURES

Manuscripts will be sent anonymously to reviewers with expertise in the appropriate area. All manuscripts will be reviewed by two experts before JBSE's accept them for publication. This process usually takes about two months. The journal co-editors will make minor editorial changes; major changes will be made by the author(s) prior to publication if necessary. JBSE's redaction will sent to author(s) only one correction which must be sent back within 2 weeks. JBSE will not review submissions previously published elsewhere through print or electronic medium.

Manuscripts submitted to the JBSE cannot be returned to authors. Authors should be sure to keep a copy for themselves. Authors' signatures should be at the end of the paper and its second checked proofs.

Manuscripts, editorial correspondence (and other correspondence for subscription and exchange), and any questions should be sent to editor-in-chief or to regional redactors.

**Journal's requirements for the authors are available online: [http://www.scientiasocialis.lt/jbse/files/JBSE\\_requirements\\_2019.pdf](http://www.scientiasocialis.lt/jbse/files/JBSE_requirements_2019.pdf)**



**SMC „SCIENTIA EDUCOLOGICA“**

*The Associated Member of Lithuanian Scientific Society, European Society for the History of Science (ESHS) and International Council of Association for Science Education /ICASE/,*

**SCIENTIA SOCIALIS Ltd**

*A member of the Lithuanian Publishers Association & Crossref*

E-mail: [scientia@scientiasocialis.lt](mailto:scientia@scientiasocialis.lt) Website: <http://www.scientiasocialis.lt>



PROBLEMS  
OF PSYCHOLOGY  
IN THE 21<sup>st</sup>  
CENTURY



PROBLEMS  
OF PSYCHOLOGY  
IN THE 21<sup>st</sup>  
CENTURY



PROBLEMS OF  
PSYCHOLOGY  
IN THE  
21<sup>ST</sup> CENTURY



EBSCO  
INDEX  
COPERNICUS  
ANVUR  
CNKI  
OAJI  
Ulrich's Periodicals  
Directory  
MIAR  
ROAD,  
Europub,  
DOI,  
Crossref,  
Scilit etc.

**Dear colleagues,**

We would like to invite articles for an international blind peer-review scientific journal (*Twenty third CFP*)

**Problems of Psychology in the 21<sup>st</sup> Century**  
**ISSN 2029-8587 (Print) ISSN 2538-7197 (Online)**

<http://www.scientiasocialis.lt/ppc/> **2021: Vol. 15, No. 1; No. 2**

Papers submitted to PPC\_23CFP\_2021 should be original work and substantively different from papers that have been previously published or are under review in a journal or another peer-reviewed conference. We invite submission of papers describing innovative research on all aspects of psychology and related areas. Submitted papers will be assessed based on their novelty, technical quality, potential impact, and clarity of writing.

E-mail: [problemsofpsychology@gmail.com](mailto:problemsofpsychology@gmail.com)

*The call is open till 25 May 2021.*

Responsible  
Publication  
Peer Reviewed  
Open Access  
Global Readership

**Application form + declaration + full paper: 25 May 2021**

[http://www.scientiasocialis.lt/ppc/files/PPC\\_guidelines\\_2018.pdf](http://www.scientiasocialis.lt/ppc/files/PPC_guidelines_2018.pdf)

We advise you to use a **template** for paper preparation. You can download it from our website: <http://www.scientiasocialis.lt/ppc/node/6> (template for paper, Word format). Theoretical papers usually follow an argumentative pattern and are organised around the solution of a problem.

**Last but not least**

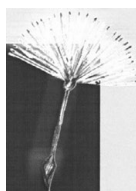
International journal „*Problems of Psychology in the 21st Century*“ is a high quality scientific journal which publishes original research on all areas of psychological sciences. The Journal welcomes the submission of manuscripts that meet the general criteria of significance and scientific excellence. Submitted papers will be assessed based on their novelty, scientific and technical quality, potential impact, and clarity of writing. All submissions will be checked by **iThenticate** before sending to reviewers. The publisher and journal have a policy of “Zero Tolerance on the Plagiarism”. PPC is an open access academic journal published semiannually.

Information related to APC can be found at:

<http://www.scientiasocialis.lt/ppc/node/node/11>

*Sincerely yours, Editorial Board*





## GAMTAMOKSLINIS UGDYMAS / NATURAL SCIENCE EDUCATION

ISSN 1648-939X /Print/, ISSN 2669-1140 /Online/

### *Dear colleagues,*

GAMTAMOKSLINIS UGDYMAS / NATURAL SCIENCE EDUCATION – is a periodical, peer reviewed, scientific-methodical journal, issued by the SMC „Scientia Educologica“ in cooperation with Scientia Socialis Ltd. It is an international journal, wherein the scientific and methodical/applied articles published in Lithuanian, English and Russian languages. This journal is intended for the teachers of general education schools, the lecturers of higher educational institutions and all, who are interested in the problems of natural science education.

The GU/NSE journal welcomes the submission of manuscripts that meet the general criteria of scientific and methodical (practical/applied) papers.

### GAMTAMOKSLINIS UGDYMAS / NATURAL SCIENCE EDUCATION

ISSN 1648-939X /Print/, ISSN 2669-1140 /Online/

<http://gu.puslapiai.lt/GUwww/indeks.htm>

<http://gu.puslapiai.lt/GUwww/Indeksavimas.htm>

<http://oaji.net/journal-detail.html?number=514>

**Responsible**

**Publication**

**Peer Reviewed**

**Open Access**

This journal is abstracted / listed / indexed / cited in:

**COPERNICUS INDEX, LIST OF SCIENCE EDUCATION**

**JOURNALS, JOURNALS OF INTEREST TO CHEMICAL**

**EDUCATORS, SKYLIGHT, OAJI, WebQualis (QUALIS/CAPES),**

**MIAR, EuroPub, QOAM, ESJI, Crossref.**

Applied research/practical/methodical work. This type of submission is best suited for practical/didactical work and reports, as well as position papers raising original and provocative theoretical or practical discourses and questions (small-scale research, applied research, didactical/methodical papers, case studies, best educational practices etc.). Each submission is carefully reviewed by two independent reviewers and ranked based on: quality of preparation, relevance to the educational community, didactical quality, originality, and importance of the contribution.

Instruction for authors and other details are available on the journal's website at:

[http://gu.puslapiai.lt/GUwww/Bendra\\_informacija.htm](http://gu.puslapiai.lt/GUwww/Bendra_informacija.htm)

GU/NSE is an Open Access journal accessible for free on the Internet. Papers must be submitted on the understanding that they have not been published elsewhere and are not currently under consideration by another publisher. Optimal paper's size: 8/12 pages. Partial article processing charges are: 5-8 EUR per one A4 page.

For contacts, questions and papers submission: [gu@gu.puslapiai.lt](mailto:gu@gu.puslapiai.lt)

*Sincerely yours, Editorial Board*



Journal of Baltic Science Education, Vol. 19, No. 6A, 2020

ISSN 1648-3898 /Print/, ISSN 2538-7138 /Online/

Compiled by:	Vincentas Lamanaukas
Linguistic Editor:	Ilona Ratkevičienė
Cover design by:	Jurgina Jankauskienė
Layout design by :	Linas Janonis

30 December 2020. Publishing in Quires 10,5. Edition 90

<i>Publisher</i>	Scientia Socialis Ltd., Donelaicio Street 29, LT-78115 Siauliai, Lithuania E-mail: <a href="mailto:scientia@scientiasocialis.lt">scientia@scientiasocialis.lt</a> Phone: +370 687 95668 <a href="http://www.scientiasocialis.lt">http://www.scientiasocialis.lt</a>
------------------	---

<i>Printing</i>	Šiauliai printing house 9A P. Lukšio Street LT-76207 Šiauliai, Lithuania Phone: +370 41 500 333. Fax: +370 41 500 336 E-mail: <a href="mailto:info@dailu.lt">info@dailu.lt</a> <a href="https://siauliuspaustuve.lt/">https://siauliuspaustuve.lt/</a>
-----------------	--